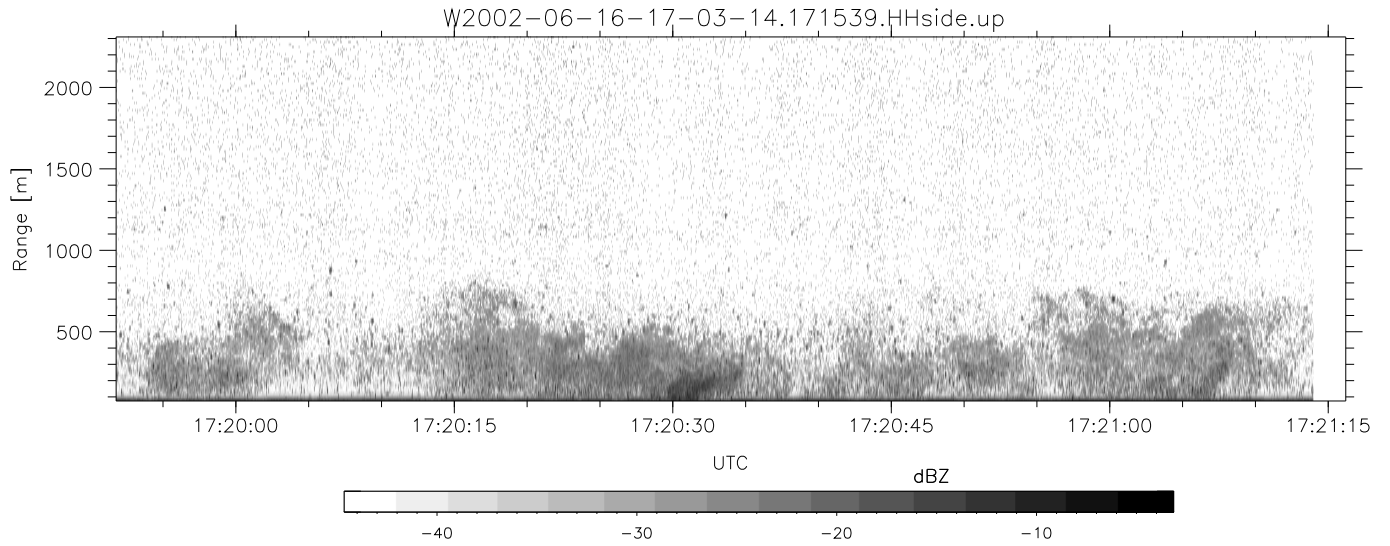


IHOP 2002 (dual-antenna config, modes 1,3,4,7) Data (cal: 49.0,50.0)

W2002-06-16-17-03-14 - SPPMAG
 IRIG:1,UTC: 17:03:06.65 to 17:21:13.96, Dur: 1087s
 TimeLngth: 1087.31s, TimeInt: 24ms (41.0pps)
 TimeCor=-13.0s, DSPDif(mn,min,mx):20,-979,3020
 PPS(min,max,std): 0,168,13.99
 Prof: 485 to 45093, NumProf(t/r): 44608/13733
 ProcTime/Recs: 17:15:39-17:21:13/30875-44607
 MxACQtime: 17ms; DRate: 98.2KB/s; Flags: 0, 0, 0
 Pulse: 275ns, IFfilt: 5.0MHz; ppPol: HH
 TxPol: H, PRF: 20 kHz
 Range: Delay 75m, Spacing 15m, Gates 150
 Ave. Pulses: 348, Rng/Prof Aspect@90m/s: 6.8

	Min	Max	Mean	Std	Varc%
hhN(dB)	-66.60	-64.97	-65.75	-78.70	5.1
vvN(dB)	-66.83	-65.29	-66.05	-79.00	5.1
hhL(dB)	-14.19	-2.05	-4.10	-8.83	33.6
vhL(dB)	-24.07	-4.23	-6.69	-10.67	40.0
ppN(m/s)	-15.80	15.80	-0.07	9.06	
ppT(m/s)	-0.04	0.02	-0.00	0.01	
vh/hh(dB)	-NaN	-15.91	-26.21	-23.64	180.
hnjmp(dB)	-1.47	1.11	-0.13	-11.87	6.7
vnjmp(dB)	-1.26	1.00	-0.12	-11.73	6.9



IHOP 2002 (dual-antenna config, modes 1,3,4,7) Data (cal: 49.0,50.0)

W2002-06-16-17-03-14 - SPPMAG						
IRIG:1,UTC: 17:03:06.65 to 17:21:13.96, Dur: 1087s	hhN(dB)	Min	Max	Mean	Std	Varc%
TimeLngth: 1087.31s, TimeInt: 24ms (41.0pps)	vvN(dB)	-66.83	-65.29	-66.05	-79.00	5.1
TimeCor=-13.0s, DSPDif(mn,min,mx):20,-979,3020	hhL(dB)	-14.19	-2.05	-4.10	-8.83	33.6
PPS(min,max,std): 0,168,13.99	vhL(dB)	-24.07	-4.23	-6.69	-10.67	40.0
Prof: 485 to 45093, NumProf(t/r): 44608/13733	ppN(m/s)	-15.80	15.80	-0.07	9.06	
ProcTime/Recs: 17:15:39-17:21:13/30875-44607	ppT(m/s)	-0.04	0.02	-0.00	0.01	
MxACQtime: 17ms; DRate: 98.2KB/s; Flags: 0, 0, 0	vh/hh(dB)	-NaN	-15.91	-26.21	-23.64	180.
Pulse: 275ns, IFfilt: 5.0MHz; ppPol: HH	hnjmp(dB)	-1.47	1.11	-0.13	-11.87	6.7
TxPol: H, PRF: 20 kHz	vnjmp(dB)	-1.26	1.00	-0.12	-11.73	6.9
Range: Delay 75m, Spacing 15m, Gates 150						
Ave. Pulses: 348, Rng/Prof Aspect@90m/s: 6.8						