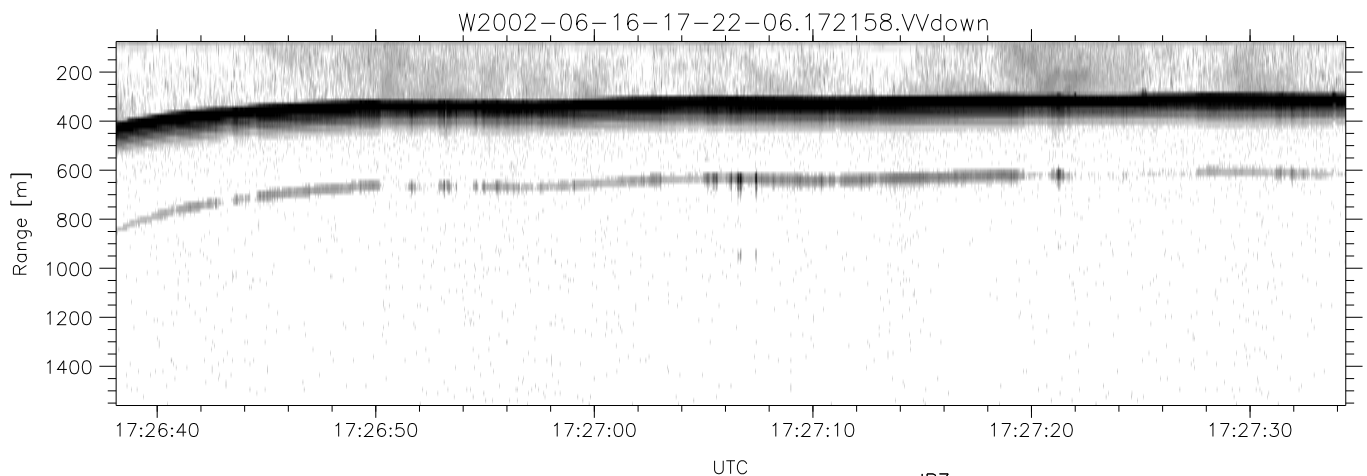
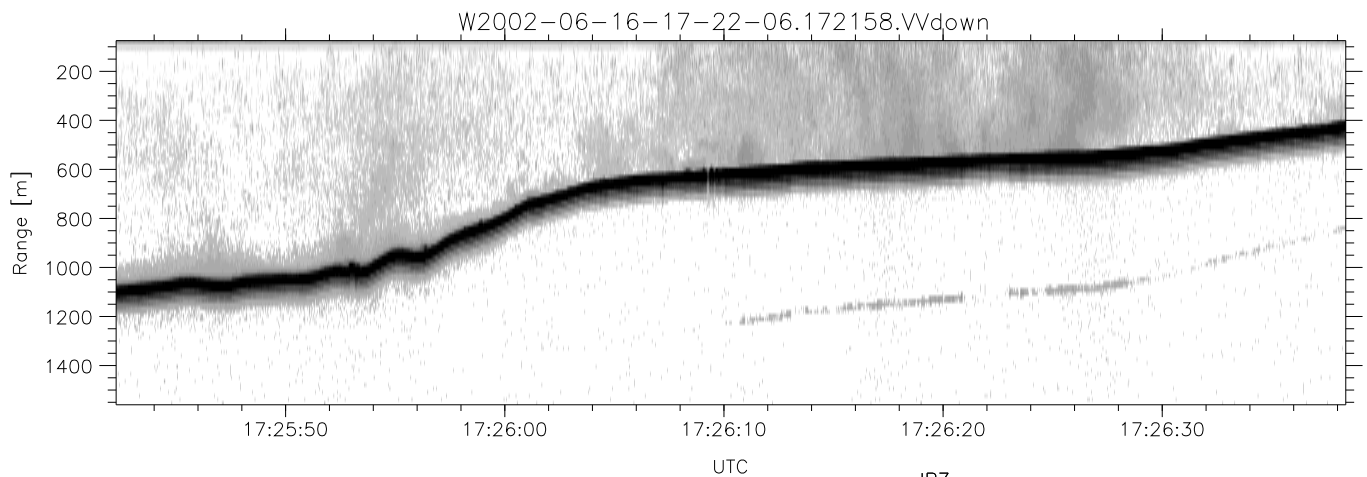
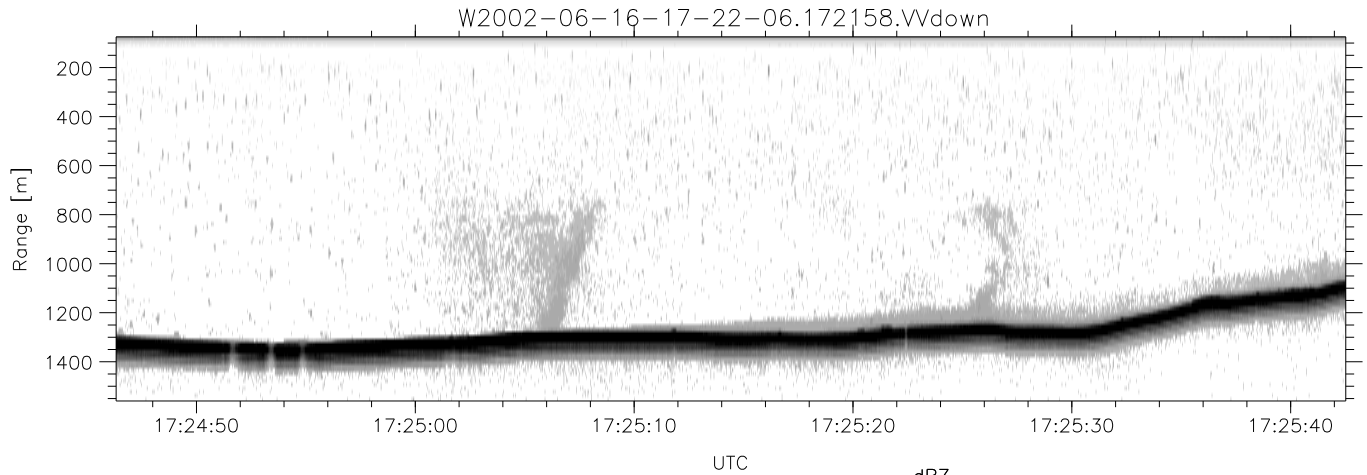


IHOP 2002 (dual-antenna config, modes 1,3,4,7) Data (cal: 49.0,50.0)

W2002-06-16-17-22-06 - PPMAG4  
 IRIG:1,UTC: 17:21:58.26 to 17:38:58.80, Dur: 1020s  
 TimeLngth: 1020.53s, TimeInt: 28ms (34.7pps)  
 TimeCor=-13.0s, DSPDif(mn,min,mx):29,-971,3028  
 PPS(min,max,std): 0,142,11.01  
 Prof: 396 to 35762, NumProf(t/r): 35366/17069  
 ProcTime/Recs: 17:21:58-17:30:10/0-17068  
 MxACQtime: 33ms; DRate: 194.0KB/s; Flags: 0, 0, 0  
 Pulse: 275ns, IFfilt: 5.0MHz; ppPol: HH HV VV  
 TxPol: HHVV, PRF: 20 10 20 10 kHz  
 Range: Delay 75m, Spacing 15m, Gates 100  
 Ave. Pulses: 84, Rng/Prof Aspect@90m/s: 5.8

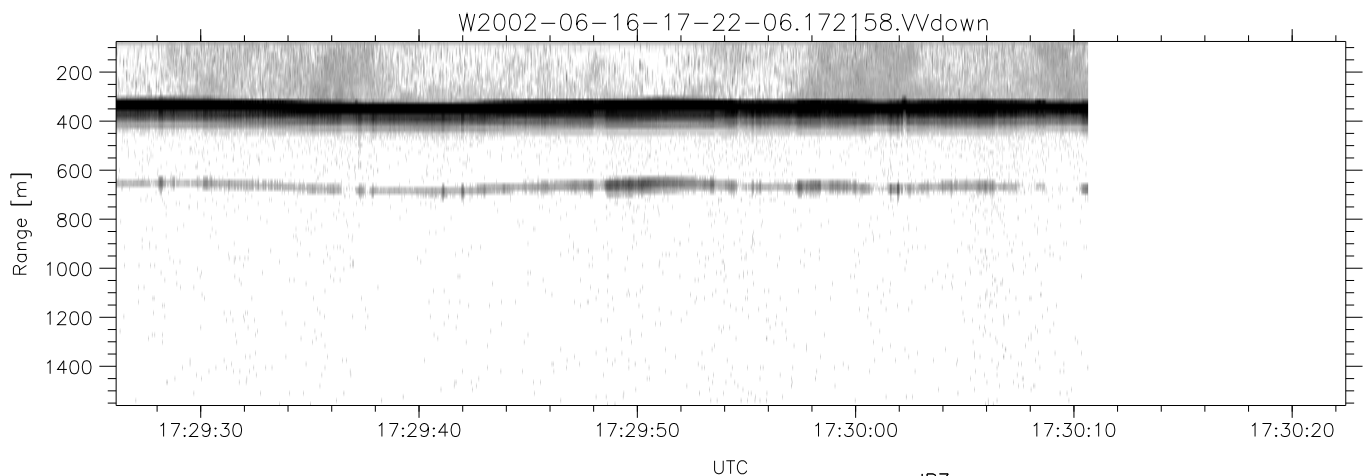
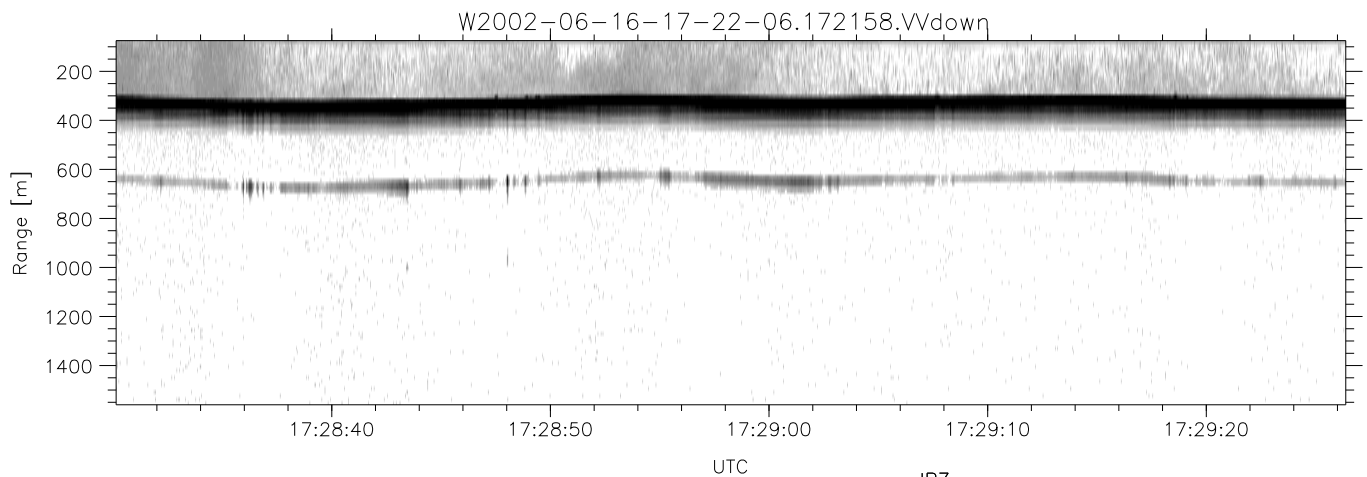
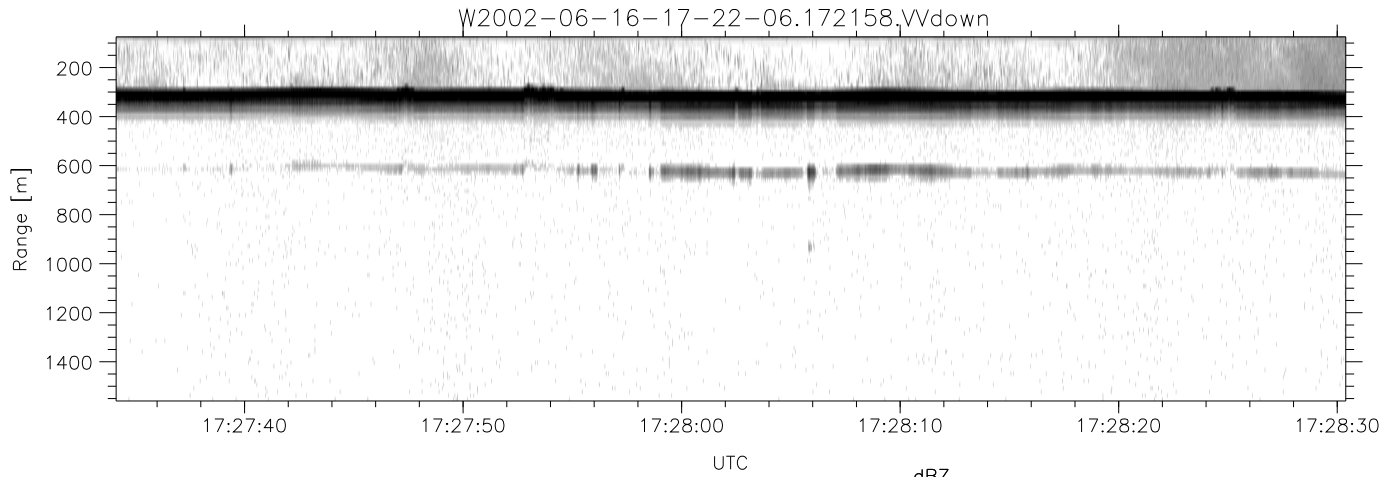
	Min	Max	Mean	Std	Varc%
hhN(dB)	-67.71	-64.35	-65.84	-75.92	9.8
vvN(dB)	-68.00	-64.46	-66.12	-76.15	9.9
hhL(dB)	-11.35	-2.37	-5.10	-9.49	36.4
vvL(dB)	-8.40	0.08	-3.54	-6.74	47.9
ppN(m/s)	-12.78	12.70	-0.02	4.12	
ppT(m/s)	-100.9	100.36	-0.19	32.55	
hh/vv(dB)	-NaN	42.92	10.70	25.20	2815
vh/hh(dB)	-NaN	-29.93	-34.68	-36.61	64.0
hv/vv(dB)	-NaN	-33.89	-55.02	-46.43	723.
hnjmp(dB)	-2.31	2.01	-0.08	-8.69	13.8
vnjmp(dB)	-2.19	2.28	-0.08	-8.58	14.1



IHOP 2002 (dual-antenna config, modes 1,3,4,7) Data (cal: 49.0,50.0)

W2002-06-16-17-22-06 - PPMAG4  
 IRIG:1,UTC: 17:21:58.26 to 17:38:58.80, Dur: 1020s  
 TimeLngth: 1020.53s, TimeInt: 28ms (34.7pps)  
 TimeCor=-13.0s, DSPDif(mn,min,mx):29,-971,3028  
 PPS(min,max,std): 0,142,11.01  
 Prof: 396 to 35762, NumProf(t/r): 35366/17069  
 ProcTime/Recs: 17:21:58-17:30:10/0-17068  
 MxACQtime: 33ms; DRate: 194.0KB/s; Flags: 0, 0, 0  
 Pulse: 275ns, IFfilt: 5.0MHz; ppPol: HH HV VV  
 TxPol: HHVV, PRF: 20 10 20 10 kHz  
 Range: Delay 75m, Spacing 15m, Gates 100  
 Ave. Pulses: 84, Rng/Prof Aspect@90m/s: 5.8

	Min	Max	Mean	Std	Varc%
hhN(dB)	-67.71	-64.35	-65.84	-75.92	9.8
vvN(dB)	-68.00	-64.46	-66.12	-76.15	9.9
hhL(dB)	-11.35	-2.37	-5.10	-9.49	36.4
vvL(dB)	-8.40	0.08	-3.54	-6.74	47.9
ppN(m/s)	-12.78	12.70	-0.02	4.12	
ppT(m/s)	-100.9	100.36	-0.19	32.55	
hh/vv(dB)	-NaN	42.92	10.70	25.20	2815
vh/hh(dB)	-NaN	-29.93	-34.68	-36.61	64.0
hv/vv(dB)	-NaN	-33.89	-55.02	-46.43	723.
hnjmp(dB)	-2.31	2.01	-0.08	-8.69	13.8
vnjmp(dB)	-2.19	2.28	-0.08	-8.58	14.1



IHOP 2002 (dual-antenna config, modes 1,3,4,7) Data (cal: 49.0,50.0)

W2002-06-16-17-22-06 - PPMAG4  
 IRIG:1,UTC: 17:21:58.26 to 17:38:58.80, Dur: 1020s  
 TimeLngth: 1020.53s, TimeInt: 28ms (34.7pps)  
 TimeCor=-13.0s, DSPDif(mn,min,mx):29,-971,3028  
 PPS(min,max,std): 0,142,11.01  
 Prof: 396 to 35762, NumProf(t/r): 35366/17069  
 ProcTime/Recs: 17:21:58-17:30:10/0-17068  
 MxACQtime: 33ms; DRate: 194.0KB/s; Flags: 0, 0, 0  
 Pulse: 275ns, IFilt: 5.0MHz; ppPol: HH HV VV  
 TxPol: HHVV, PRF: 20 10 20 10 kHz  
 Range: Delay 75m, Spacing 15m, Gates 100  
 Ave. Pulses: 84, Rng/Prof Aspect@90m/s: 5.8

	Min	Max	Mean	Std	Varc%
hhN(dB)	-67.71	-64.35	-65.84	-75.92	9.8
vvN(dB)	-68.00	-64.46	-66.12	-76.15	9.9
hhL(dB)	-11.35	-2.37	-5.10	-9.49	36.4
vvL(dB)	-8.40	0.08	-3.54	-6.74	47.9
ppN(m/s)	-12.78	12.70	-0.02	4.12	
ppT(m/s)	-100.9	100.36	-0.19	32.55	
hh/vv(dB)	-NaN	42.92	10.70	25.20	2815
vh/hh(dB)	-NaN	-29.93	-34.68	-36.61	64.0
hv/vv(dB)	-NaN	-33.89	-55.02	-46.43	723.
hnjmp(dB)	-2.31	2.01	-0.08	-8.69	13.8
vnjmp(dB)	-2.19	2.28	-0.08	-8.58	14.1