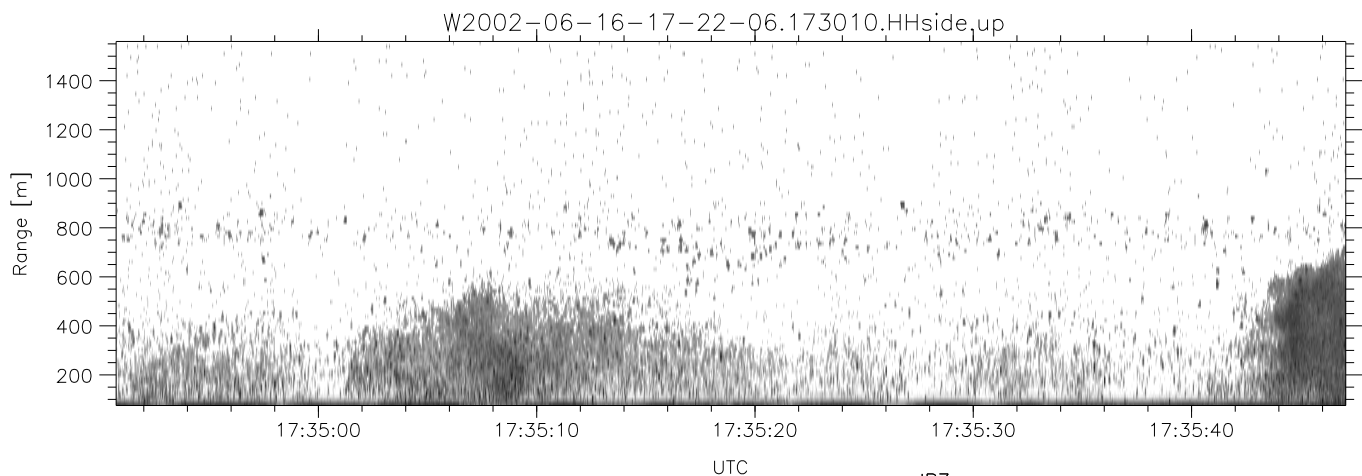
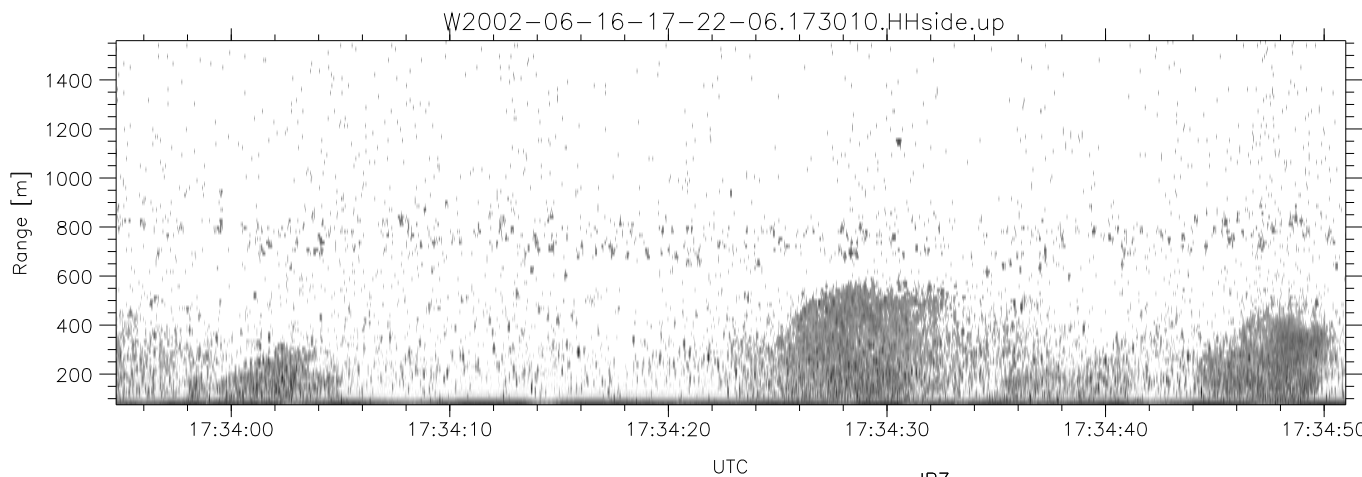
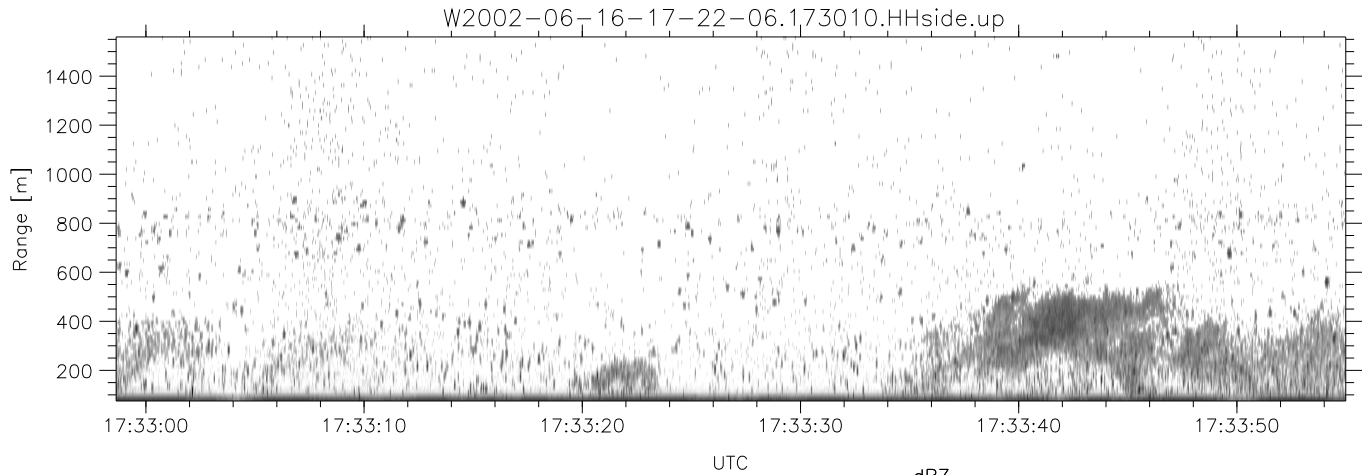


IHOP 2002 (dual-antenna config, modes 1,3,4,7) Data (cal: 49.0,50.0)

W2002-06-16-17-22-06 - PPMAG4
 IRIG:1,UTC: 17:21:58.26 to 17:38:58.80, Dur: 1020s
 TimeLngth: 1020.53s, TimeInt: 28ms (34.7pps)
 TimeCor=-13.0s, DSPDif(mn,min,mx):29,-971,3028
 PPS(min,max,std): 0,142,9.60
 Prof: 396 to 35762, NumProf(t/r): 35366/17069
 ProcTime/Recs: 17:30:10-17:38:23/17069-34137
 MxACQtime: 33ms; DRate: 194.0KB/s; Flags: 0, 0, 0
 Pulse: 275ns, IFfilt: 5.0MHz; ppPol: HH HV VV
 TxPol: HHVV, PRF: 20 10 20 10 kHz
 Range: Delay 75m, Spacing 15m, Gates 100
 Ave. Pulses: 84, Rng/Prof Aspect@90m/s: 5.8

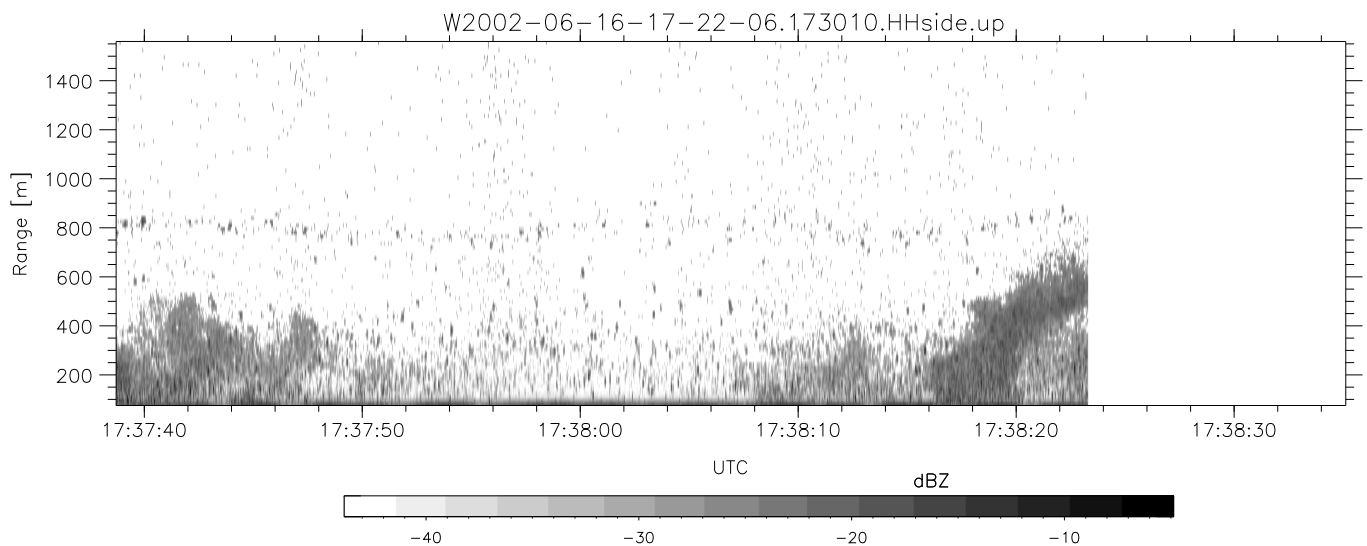
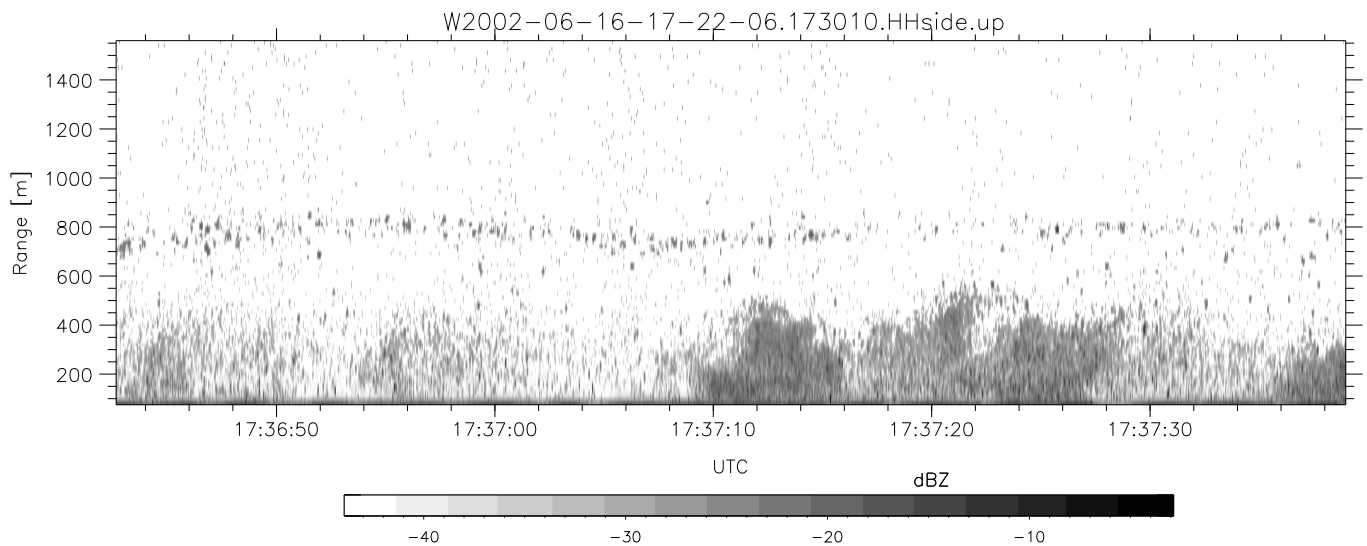
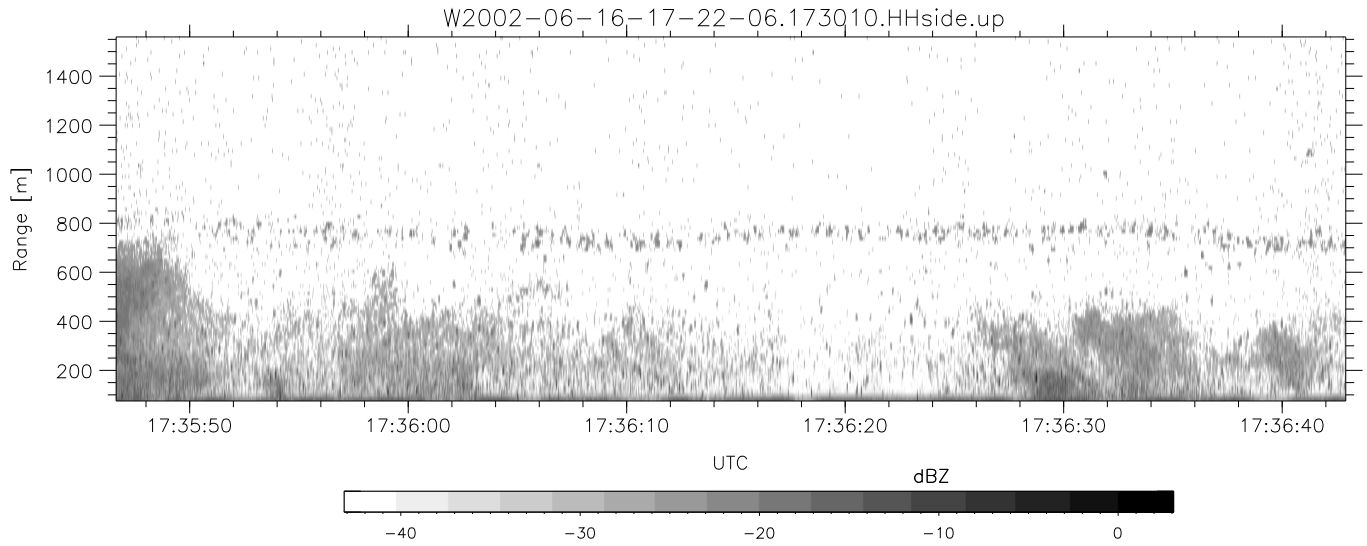
	Min	Max	Mean	Std	Varc%
hhN(dB)	-67.56	-64.17	-65.88	-75.96	9.8
vvN(dB)	-68.02	-64.47	-66.17	-76.21	9.9
hhL(dB)	-11.56	-2.54	-5.48	-9.29	41.5
vvL(dB)	-8.23	-0.63	-5.94	-10.45	35.4
ppN(m/s)	-12.45	12.68	0.01	4.15	
ppT(m/s)	-98.39	100.21	0.05	32.77	
hh/vv(dB)	-NaN	45.55	9.62	31.40	1505
vh/hh(dB)	-NaN	-28.99	-35.05	-35.01	100.
hv/vv(dB)	-NaN	-34.63	-53.00	-46.52	445.
hnjmp(dB)	-2.18	2.28	0.16	-8.48	13.7
vnjmp(dB)	-2.08	2.45	0.16	-8.40	13.9



IHOP 2002 (dual-antenna config, modes 1,3,4,7) Data (cal: 49.0,50.0)

W2002-06-16-17-22-06 - PPMAG4
 IRIG:1,UTC: 17:21:58.26 to 17:38:58.80, Dur: 1020s
 TimeLngth: 1020.53s, TimeInt: 28ms (34.7pps)
 TimeCor=-13.0s, DSPDif(mn,min,mx):29,-971,3028
 PPS(min,max,std): 0,142,9.60
 Prof: 396 to 35762, NumProf(t/r): 35366/17069
 ProcTime/Recs: 17:30:10-17:38:23/17069-34137
 MxACQtime: 33ms; DRate: 194.0KB/s; Flags: 0, 0, 0
 Pulse: 275ns, IFfilt: 5.0MHz; ppPol: HH HV VV
 TxPol: HHVV, PRF: 20 10 20 10 kHz
 Range: Delay 75m, Spacing 15m, Gates 100
 Ave. Pulses: 84, Rng/Prof Aspect@90m/s: 5.8

	Min	Max	Mean	Std	Varc%
hhN(dB)	-67.56	-64.17	-65.88	-75.96	9.8
vvN(dB)	-68.02	-64.47	-66.17	-76.21	9.9
hhL(dB)	-11.56	-2.54	-5.48	-9.29	41.5
vvL(dB)	-8.23	-0.63	-5.94	-10.45	35.4
ppN(m/s)	-12.45	12.68	0.01	4.15	
ppT(m/s)	-98.39	100.21	0.05	32.77	
hh/vv(dB)	-NaN	45.55	9.62	31.40	1505
vh/hh(dB)	-NaN	-28.99	-35.05	-35.01	100.
hv/vv(dB)	-NaN	-34.63	-53.00	-46.52	445.
hnjmp(dB)	-2.18	2.28	0.16	-8.48	13.7
vnjmp(dB)	-2.08	2.45	0.16	-8.40	13.9



IHOP 2002 (dual-antenna config, modes 1,3,4,7) Data (cal: 49.0,50.0)

W2002-06-16-17-22-06 - PPMAG4
 IRIG:1,UTC: 17:21:58.26 to 17:38:58.80, Dur: 1020s
 TimeLngth: 1020.53s, TimeInt: 28ms (34.7pps)
 TimeCor=-13.0s, DSPDif(mn,min,mx):29,-971,3028
 PPS(min,max,std): 0,142,9.60
 Prof: 396 to 35762, NumProf(t/r): 35366/17069
 ProcTime/Recs: 17:30:10-17:38:23/17069-34137
 MxACQtime: 33ms; DRate: 194.0KB/s; Flags: 0, 0, 0
 Pulse: 275ns, IFfilt: 5.0MHz; ppPol: HH HV VV
 TxPol: HHVV, PRF: 20 10 20 10 kHz
 Range: Delay 75m, Spacing 15m, Gates 100
 Ave. Pulses: 84, Rng/Prof Aspect@90m/s: 5.8

	Min	Max	Mean	Std	Varc%
hhN(dB)	-67.56	-64.17	-65.88	-75.96	9.8
vvN(dB)	-68.02	-64.47	-66.17	-76.21	9.9
hhL(dB)	-11.56	-2.54	-5.48	-9.29	41.5
vvL(dB)	-8.23	-0.63	-5.94	-10.45	35.4
ppN(m/s)	-12.45	12.68	0.01	4.15	
ppT(m/s)	-98.39	100.21	0.05	32.77	
hh/vv(dB)	-NaN	45.55	9.62	31.40	1505
vh/hh(dB)	-NaN	-28.99	-35.05	-35.01	100.
hv/vv(dB)	-NaN	-34.63	-53.00	-46.52	445.
hnjmp(dB)	-2.18	2.28	0.16	-8.48	13.7
vnjmp(dB)	-2.08	2.45	0.16	-8.40	13.9