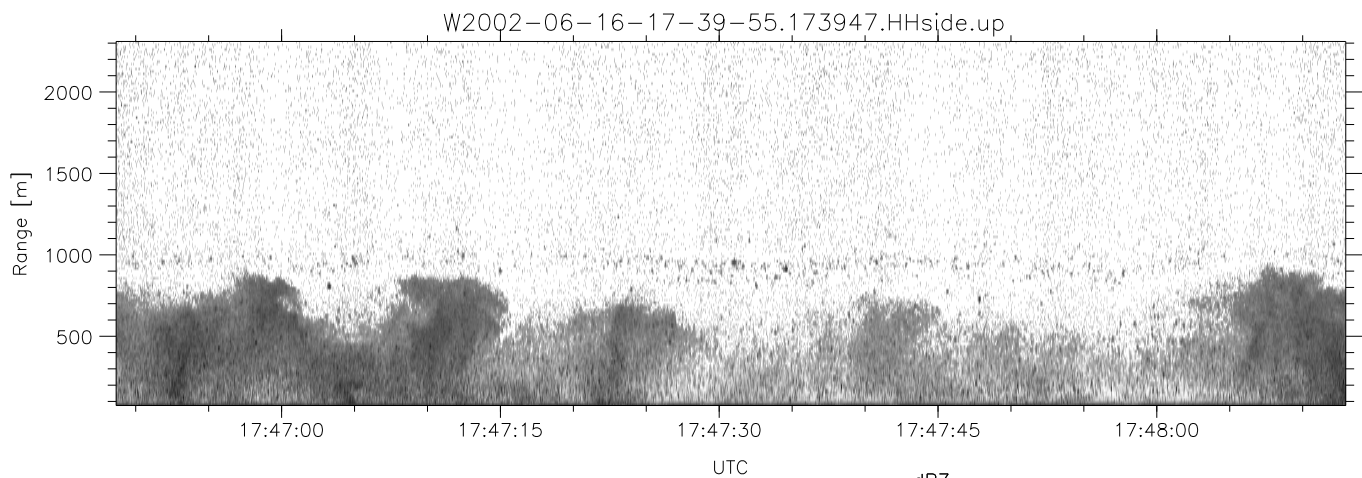
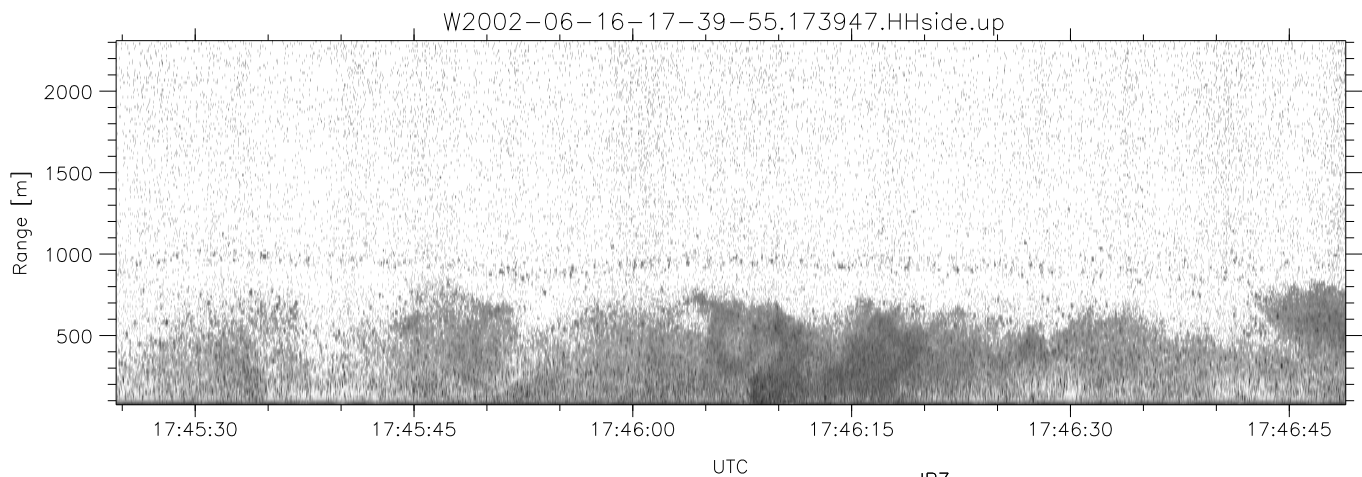
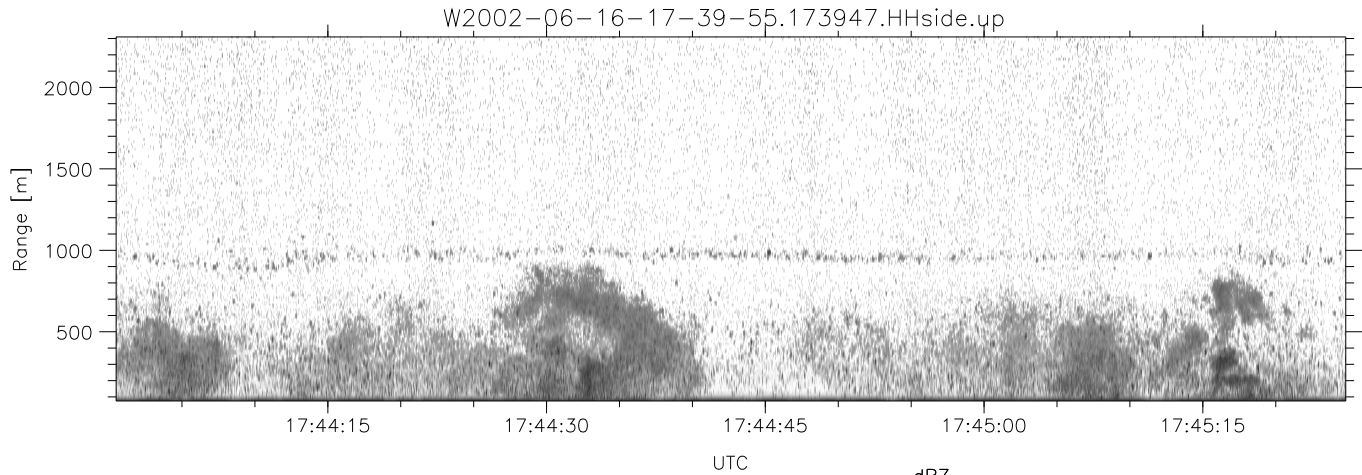


IHOP 2002 (dual-antenna config, modes 1,3,4,7) Data (cal: 49.0,50.0)

W2002-06-16-17-39-55 - SPPMAG  
 IRIG:1,UTC: 17:39:47.16 to 18:11:52.90, Dur: 1925s  
 TimeLngth: 1925.74s, TimeInt: 24ms (41.0pps)  
 TimeCor=-13.0s, DSPDif(mn,min,mx):21,-976,1020  
 PPS(min,max,std): 0,161,5.87  
 Prof: 792 to 79727, NumProf(t/r): 78935/30122  
 ProcTime/Recs: 17:39:47-17:52:02/0-30121  
 MxAcQtime: 17ms; DRate: 98.2KB/s; Flags: 0, 0, 0  
 Pulse: 275ns, IFfilt: 5.0MHz; ppPol: HH  
 TxPol: H, PRF: 20 kHz  
 Range: Delay 75m, Spacing 15m, Gates 150  
 Ave. Pulses: 348, Rng/Prof Aspect@90m/s: 6.8

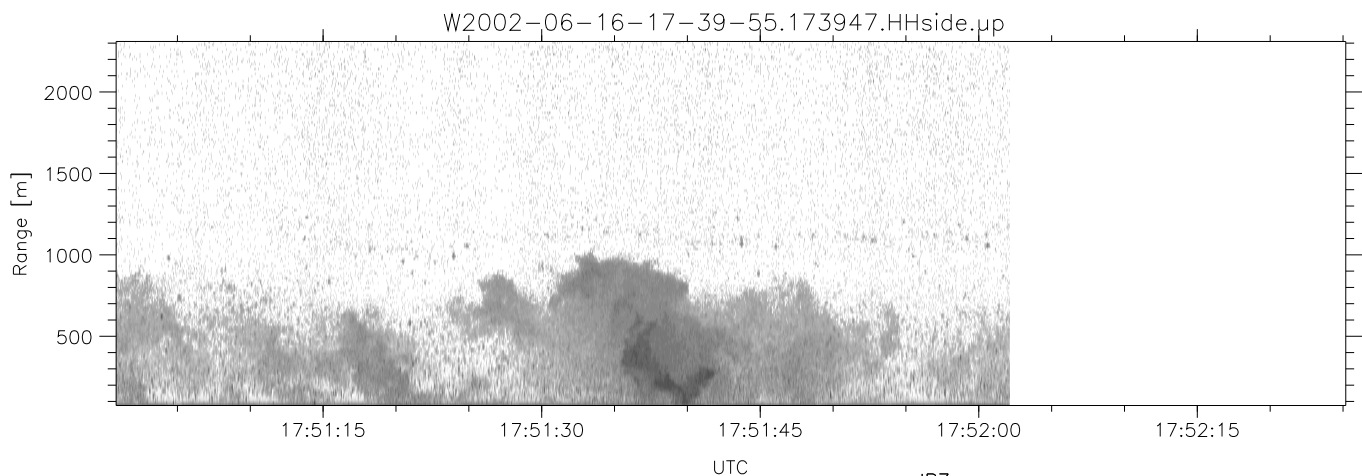
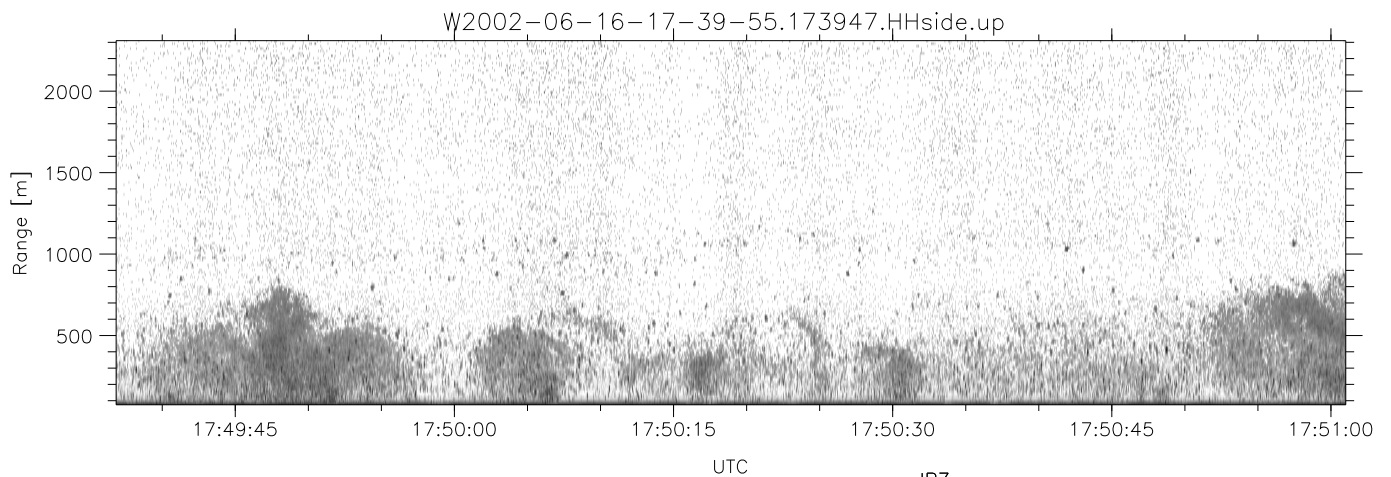
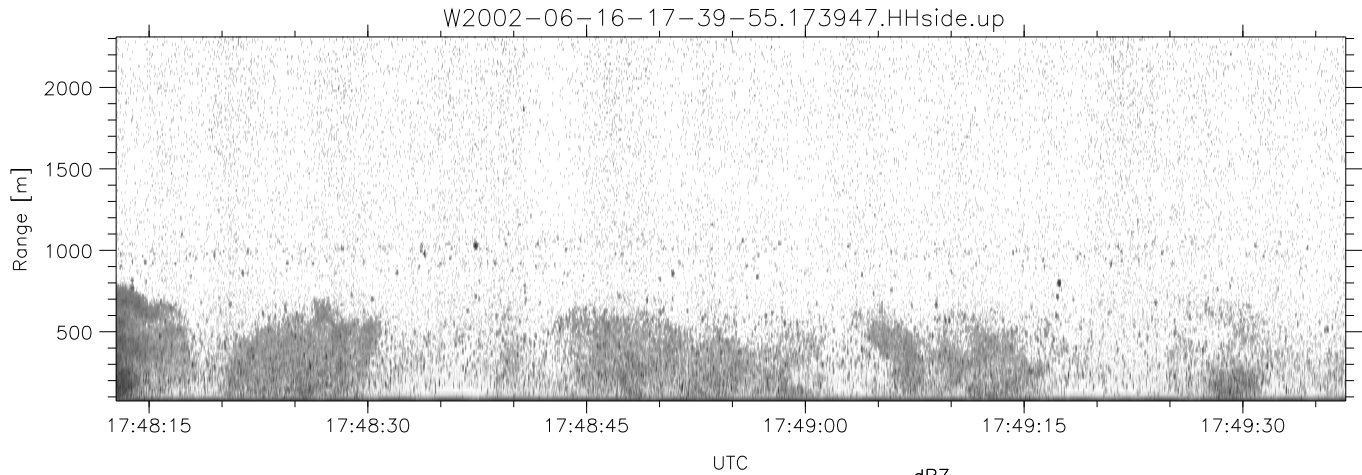
	Min	Max	Mean	Std	Varc%
hhN(dB)	-66.70	-65.00	-65.88	-78.85	5.1
vvN(dB)	-67.07	-65.38	-66.22	-79.17	5.1
hhL(dB)	-13.97	-2.20	-4.43	-9.36	32.2
vhL(dB)	-24.77	-4.04	-6.57	-10.96	36.4
ppN(m/s)	-15.80	15.80	-0.02	9.05	
ppT(m/s)	-0.04	0.02	-0.00	0.01	
vh/hh(dB)	-NaN	4.78	-15.17	-6.17	795.
hnjmp(dB)	-1.33	0.91	-0.13	-11.82	6.8
vnjmp(dB)	-1.31	0.98	-0.11	-11.75	6.9



IHOP 2002 (dual-antenna config, modes 1,3,4,7) Data (cal: 49.0,50.0)

W2002-06-16-17-39-55 - SPPMAG  
 IRIG:1,UTC: 17:39:47.16 to 18:11:52.90, Dur: 1925s  
 TimeLngth: 1925.74s, TimeInt: 24ms (41.0pps)  
 TimeCor=-13.0s, DSPDif(mn,min,mx):21,-976,1020  
 PPS(min,max,std): 0,161,5.87  
 Prof: 792 to 79727, NumProf(t/r): 78935/30122  
 ProcTime/Recs: 17:39:47-17:52:02/0-30121  
 MxACQtime: 17ms; DRate: 98.2KB/s; Flags: 0, 0, 0  
 Pulse: 275ns, IFfilt: 5.0MHz; ppPol: HH  
 TxPol: H, PRF: 20 kHz  
 Range: Delay 75m, Spacing 15m, Gates 150  
 Ave. Pulses: 348, Rng/Prof Aspect@90m/s: 6.8

	Min	Max	Mean	Std	Varc%
hhN(dB)	-66.70	-65.00	-65.88	-78.85	5.1
vvN(dB)	-67.07	-65.38	-66.22	-79.17	5.1
hhL(dB)	-13.97	-2.20	-4.43	-9.36	32.2
vhL(dB)	-24.77	-4.04	-6.57	-10.96	36.4
ppN(m/s)	-15.80	15.80	-0.02	9.05	
ppT(m/s)	-0.04	0.02	-0.00	0.01	
vh/hh(dB)	-NaN	4.78	-15.17	-6.17	795.
hnjmp(dB)	-1.33	0.91	-0.13	-11.82	6.8
vnjmp(dB)	-1.31	0.98	-0.11	-11.75	6.9



IHOP 2002 (dual-antenna config, modes 1,3,4,7) Data (cal: 49.0,50.0)

W2002-06-16-17-39-55 - SPPMAG  
 IRIG:1,UTC: 17:39:47.16 to 18:11:52.90, Dur: 1925s  
 TimeLngth: 1925.74s, TimeInt: 24ms (41.0pps)  
 TimeCor=-13.0s, DSPDif(mn,min,mx):21,-976,1020  
 PPS(min,max,std): 0,161,5.87  
 Prof: 792 to 79727, NumProf(t/r): 78935/30122  
 ProcTime/Recs: 17:39:47-17:52:02/0-30121  
 MxACQtime: 17ms; DRate: 98.2KB/s; Flags: 0, 0, 0  
 Pulse: 275ns, IFfilt: 5.0MHz; ppPol: HH  
 TxPol: H, PRF: 20 kHz  
 Range: Delay 75m, Spacing 15m, Gates 150  
 Ave. Pulses: 348, Rng/Prof Aspect@90m/s: 6.8

	Min	Max	Mean	Std	Varc%
hhN(dB)	-66.70	-65.00	-65.88	-78.85	5.1
vvN(dB)	-67.07	-65.38	-66.22	-79.17	5.1
hhL(dB)	-13.97	-2.20	-4.43	-9.36	32.2
vhL(dB)	-24.77	-4.04	-6.57	-10.96	36.4
ppN(m/s)	-15.80	15.80	-0.02	9.05	
ppT(m/s)	-0.04	0.02	-0.00	0.01	
vh/hh(dB)	-NaN	4.78	-15.17	-6.17	795.
hnjmp(dB)	-1.33	0.91	-0.13	-11.82	6.8
vnjmp(dB)	-1.31	0.98	-0.11	-11.75	6.9