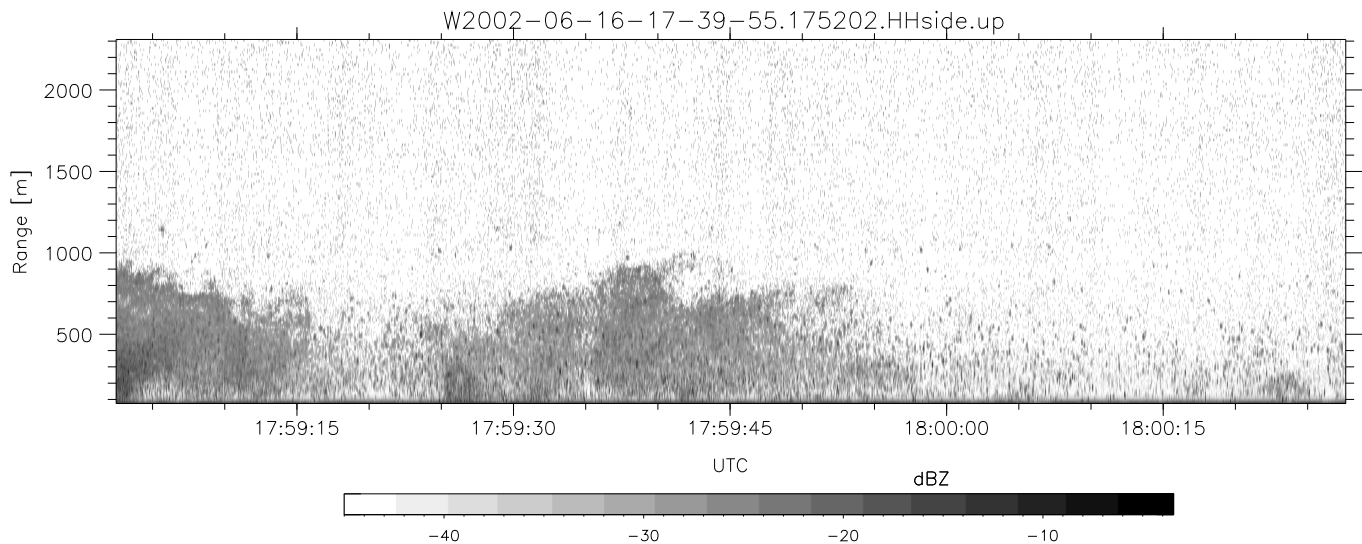
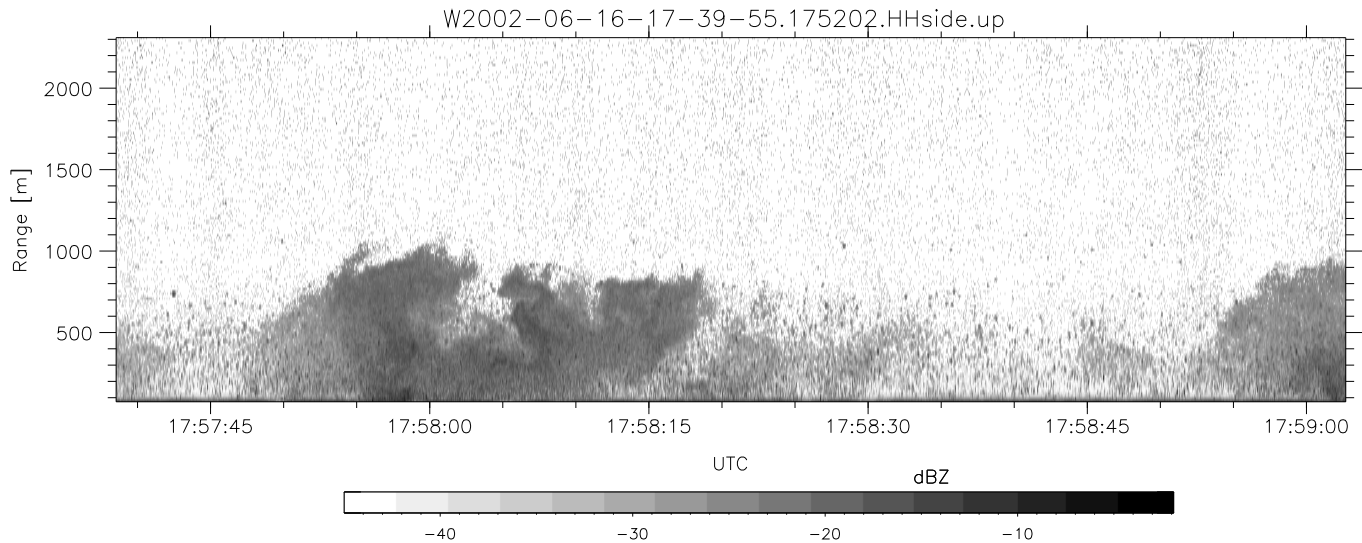
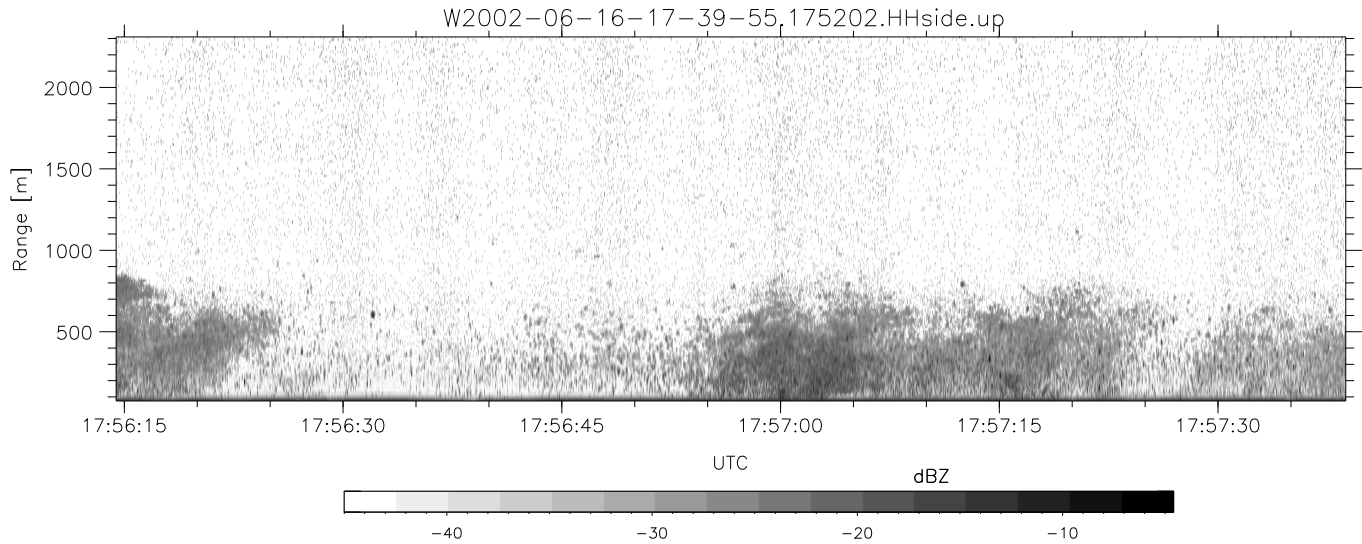


IHOP 2002 (dual-antenna config, modes 1,3,4,7) Data (cal: 49.0,50.0)

W2002-06-16-17-39-55 - SPPMAG
 IRIG:1,UTC: 17:39:47.16 to 18:11:52.90, Dur: 1925s
 TimeLngth: 1925.74s, TimeInt: 24ms (41.0pps)
 TimeCor=-13.0s, DSPDif(mn,min,mx):21,20,233
 PPS(min,max,std): 23,42,2.47
 Prof: 792 to 79727, NumProf(t/r): 78935/30122
 ProcTime/Recs: 17:52:02-18:04:17/30122-60243
 MxACQtime: 17ms; DRate: 98.2KB/s; Flags: 0, 0, 0
 Pulse: 275ns, IFfilt: 5.0MHz; ppPol: HH
 TxPol: H, PRF: 20 kHz
 Range: Delay 75m, Spacing 15m, Gates 150
 Ave. Pulses: 348, Rng/Prof Aspect@90m/s: 6.8

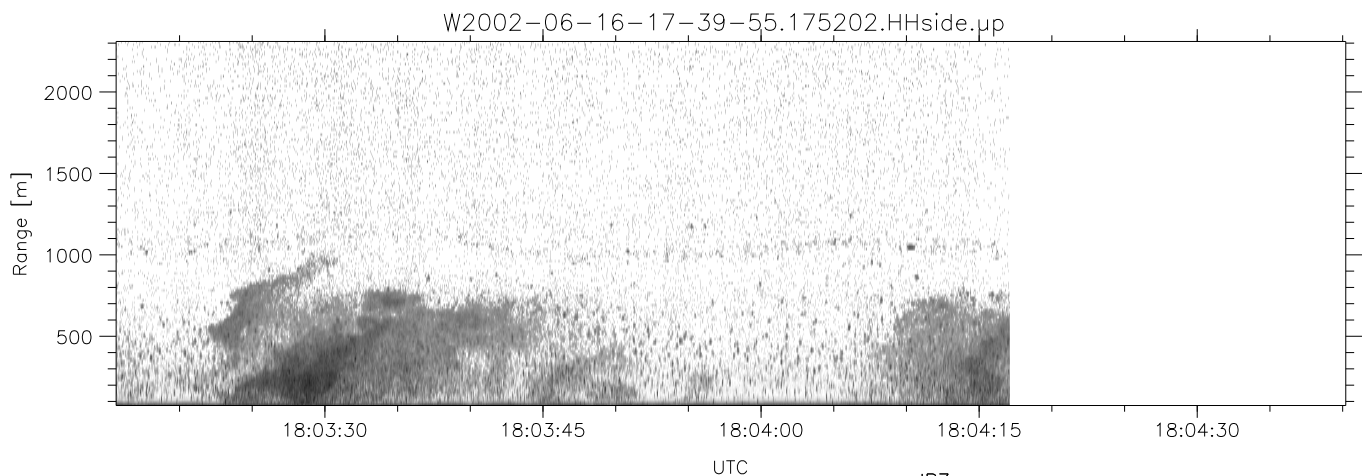
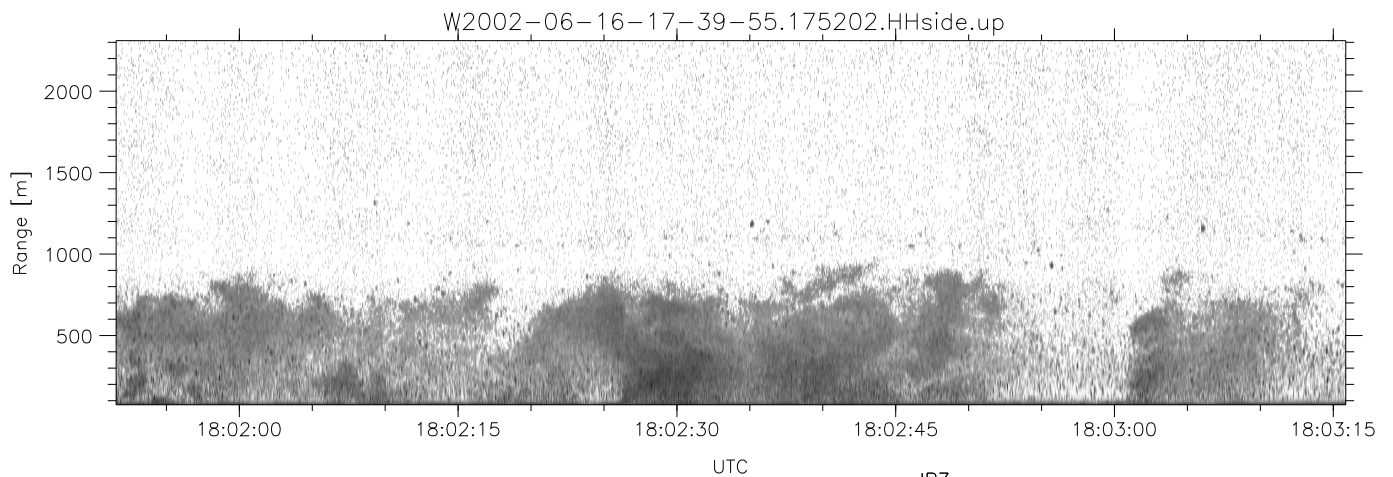
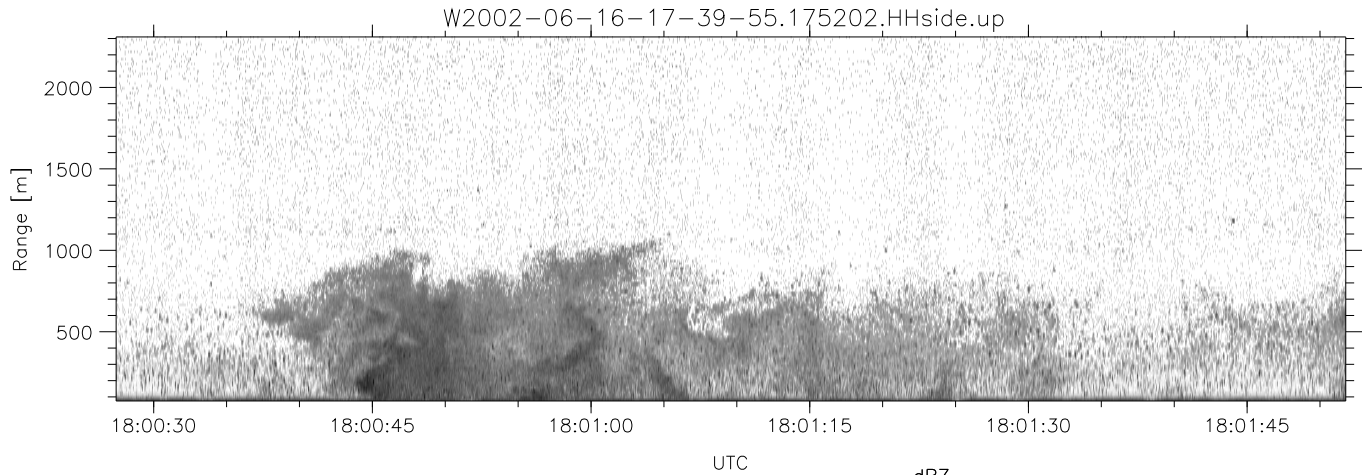
	Min	Max	Mean	Std	Varc%
hhN(dB)	-66.79	-65.14	-65.94	-78.92	5.0
vvN(dB)	-67.10	-65.41	-66.27	-79.21	5.1
hhL(dB)	-15.09	-2.46	-4.62	-9.52	32.3
vhL(dB)	-24.91	-4.44	-6.73	-11.24	35.4
ppN(m/s)	-15.80	15.80	0.04	9.08	
ppT(m/s)	-0.04	0.03	-0.00	0.01	
vh/hh(dB)	-NaN	-6.32	-20.91	-15.33	360.
hnjmp(dB)	-1.32	1.16	-0.13	-11.83	6.8
vnjmp(dB)	-1.33	1.19	-0.11	-11.74	6.9



IHOP 2002 (dual-antenna config, modes 1,3,4,7) Data (cal: 49.0,50.0)

W2002-06-16-17-39-55 - SPPMAG
 IRIG:1,UTC: 17:39:47.16 to 18:11:52.90, Dur: 1925s
 TimeLngth: 1925.74s, TimeInt: 24ms (41.0pps)
 TimeCor=-13.0s, DSPDif(mn,min,mx):21,20,233
 PPS(min,max,std): 23,42,2.47
 Prof: 792 to 79727, NumProf(t/r): 78935/30122
 ProcTime/Recs: 17:52:02-18:04:17/30122-60243
 MxACQtime: 17ms; DRate: 98.2KB/s; Flags: 0, 0, 0
 Pulse: 275ns, IFfilt: 5.0MHz; ppPol: HH
 TxPol: H, PRF: 20 kHz
 Range: Delay 75m, Spacing 15m, Gates 150
 Ave. Pulses: 348, Rng/Prof Aspect@90m/s: 6.8

	Min	Max	Mean	Std	Varc%
hhN(dB)	-66.79	-65.14	-65.94	-78.92	5.0
vvN(dB)	-67.10	-65.41	-66.27	-79.21	5.1
hhL(dB)	-15.09	-2.46	-4.62	-9.52	32.3
vhL(dB)	-24.91	-4.44	-6.73	-11.24	35.4
ppN(m/s)	-15.80	15.80	0.04	9.08	
ppT(m/s)	-0.04	0.03	-0.00	0.01	
vh/hh(dB)	-NaN	-6.32	-20.91	-15.33	360.
hn_jmp(dB)	-1.32	1.16	-0.13	-11.83	6.8
vn_jmp(dB)	-1.33	1.19	-0.11	-11.74	6.9



IHOP 2002 (dual-antenna config, modes 1,3,4,7) Data (cal: 49.0,50.0)

W2002-06-16-17-39-55 - SPPMAG
 IRIG:1,UTC: 17:39:47.16 to 18:11:52.90, Dur: 1925s
 TimeLngth: 1925.74s, TimeInt: 24ms (41.0pps)
 TimeCor=-13.0s, DSPDif(mn,min,mx):21,20,233
 PPS(min,max,std): 23,42,2.47
 Prof: 792 to 79727, NumProf(t/r): 78935/30122
 ProcTime/Recs: 17:52:02-18:04:17/30122-60243
 MxACQtime: 17ms; DRate: 98.2KB/s; Flags: 0, 0, 0
 Pulse: 275ns, IFfilt: 5.0MHz; ppPol: HH
 TxPol: H, PRF: 20 kHz
 Range: Delay 75m, Spacing 15m, Gates 150
 Ave. Pulses: 348, Rng/Prof Aspect@90m/s: 6.8

	Min	Max	Mean	Std	Varc%
hhN(dB)	-66.79	-65.14	-65.94	-78.92	5.0
vvN(dB)	-67.10	-65.41	-66.27	-79.21	5.1
hhL(dB)	-15.09	-2.46	-4.62	-9.52	32.3
vhL(dB)	-24.91	-4.44	-6.73	-11.24	35.4
ppN(m/s)	-15.80	15.80	0.04	9.08	
ppT(m/s)	-0.04	0.03	-0.00	0.01	
vh/hh(dB)	-NaN	-6.32	-20.91	-15.33	360.
hnjmp(dB)	-1.32	1.16	-0.13	-11.83	6.8
vnjmp(dB)	-1.33	1.19	-0.11	-11.74	6.9