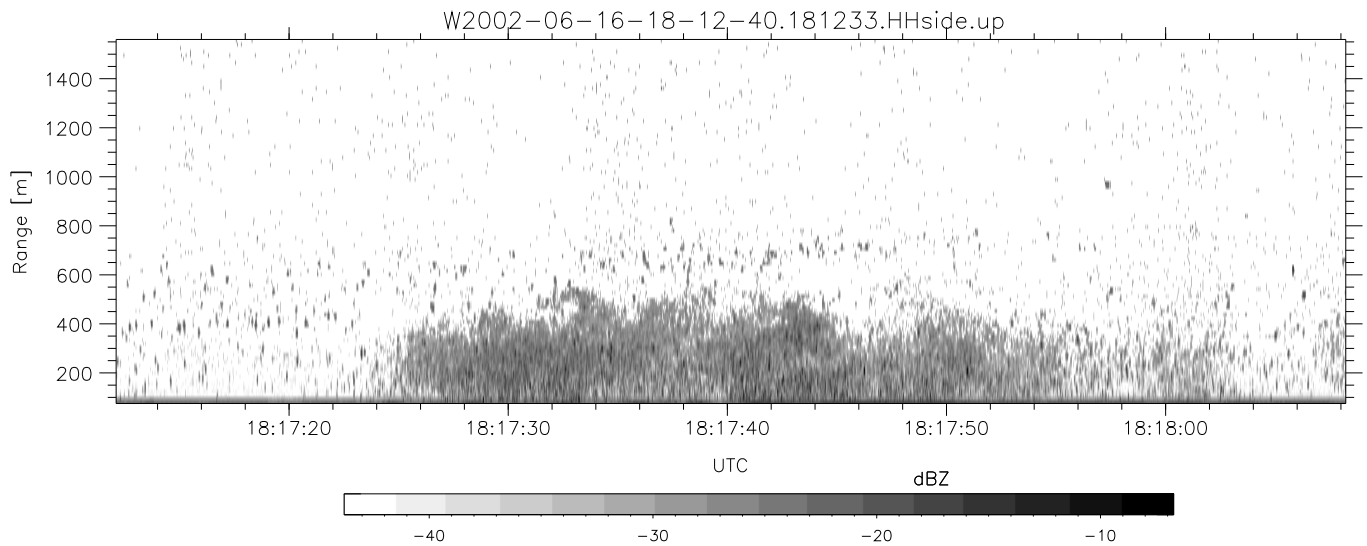
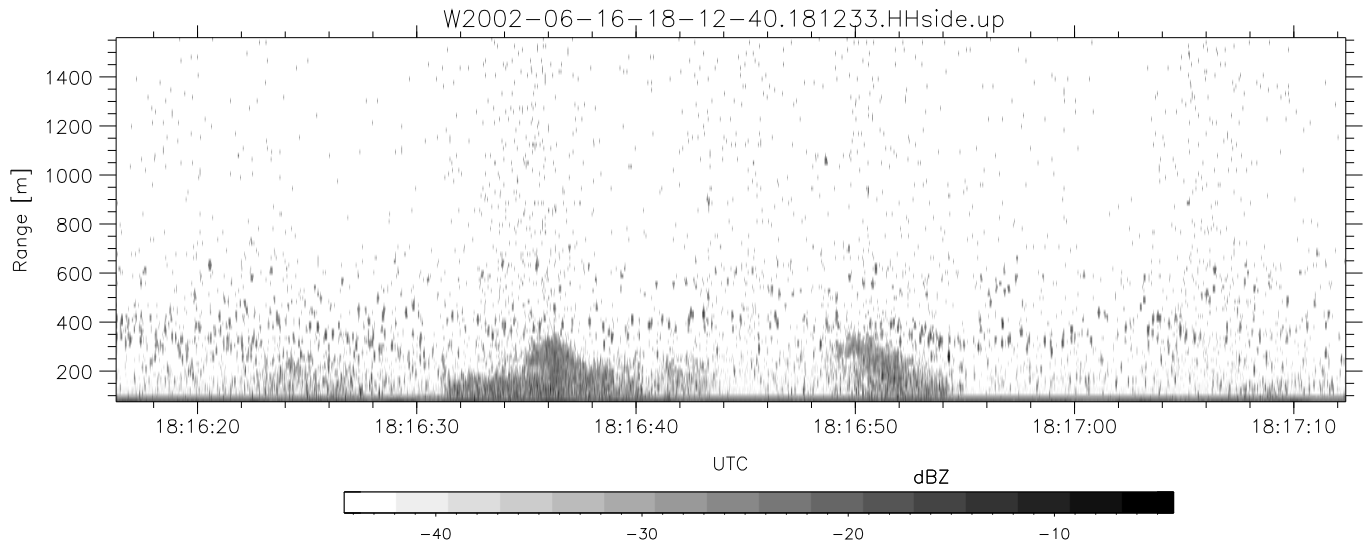
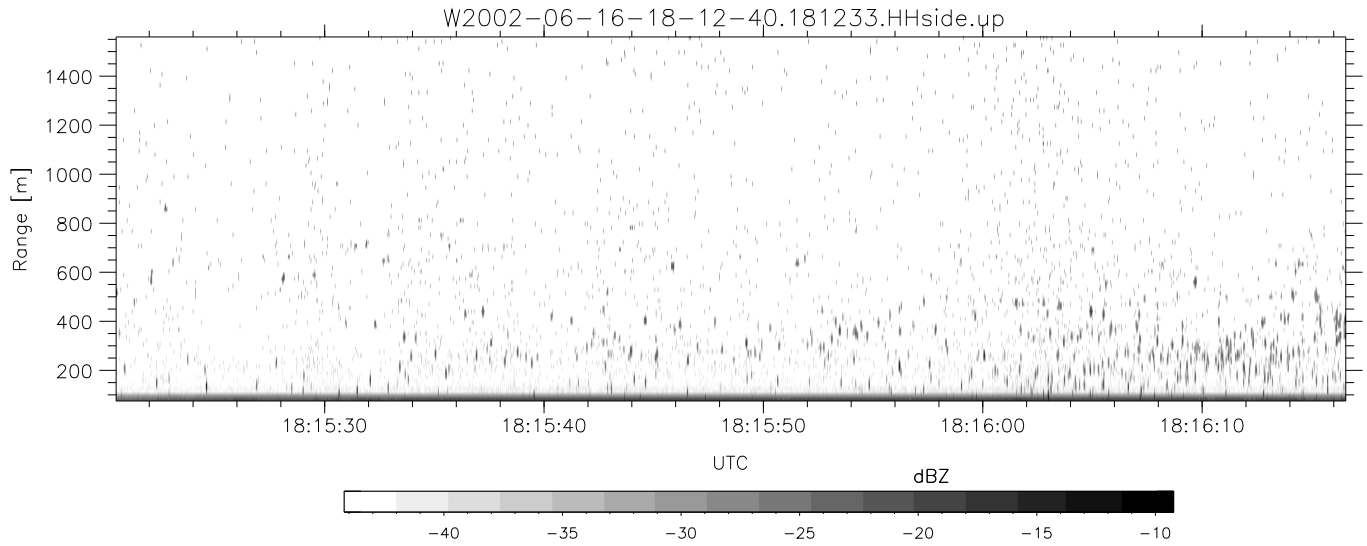


IHOP 2002 (dual-antenna config, modes 1,3,4,7) Data (cal: 49.0,50.0)

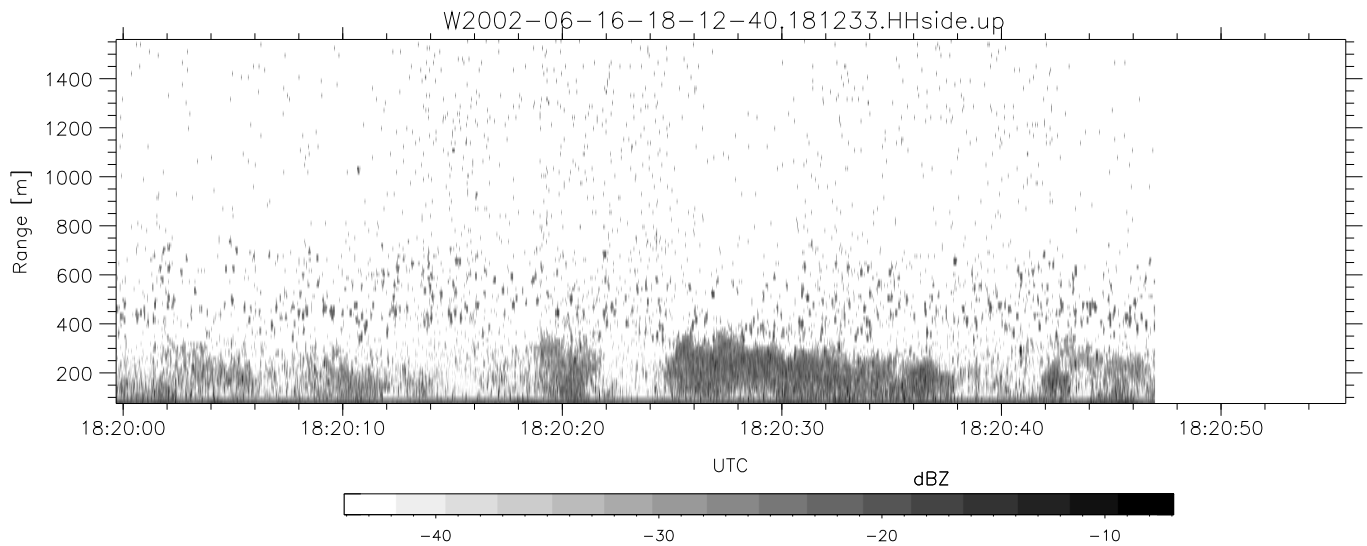
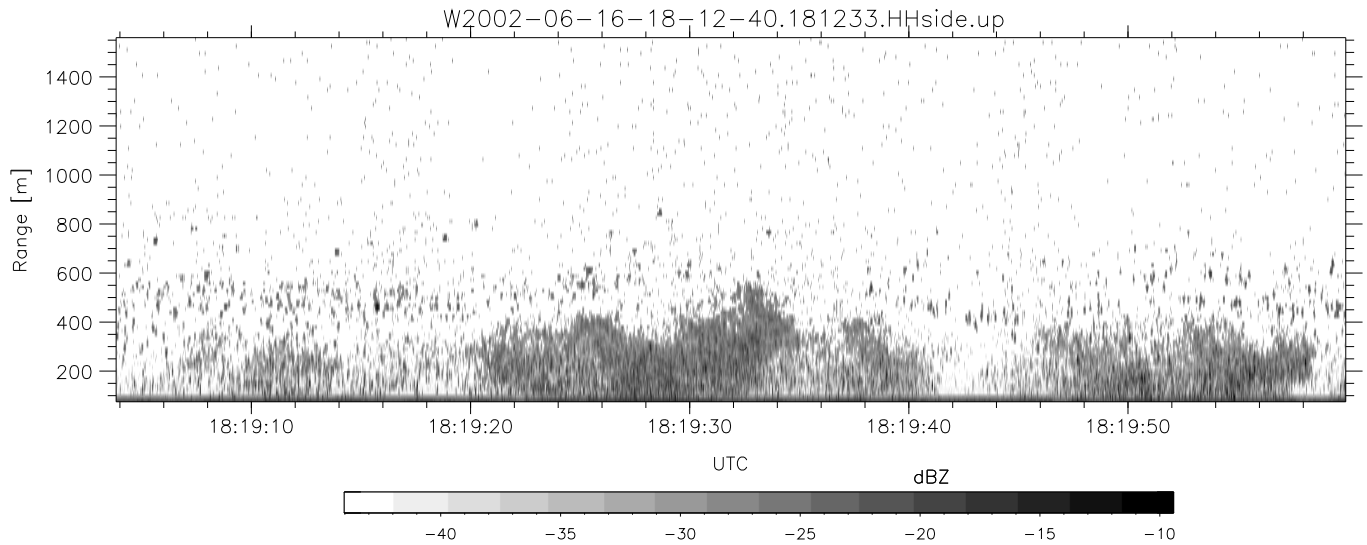
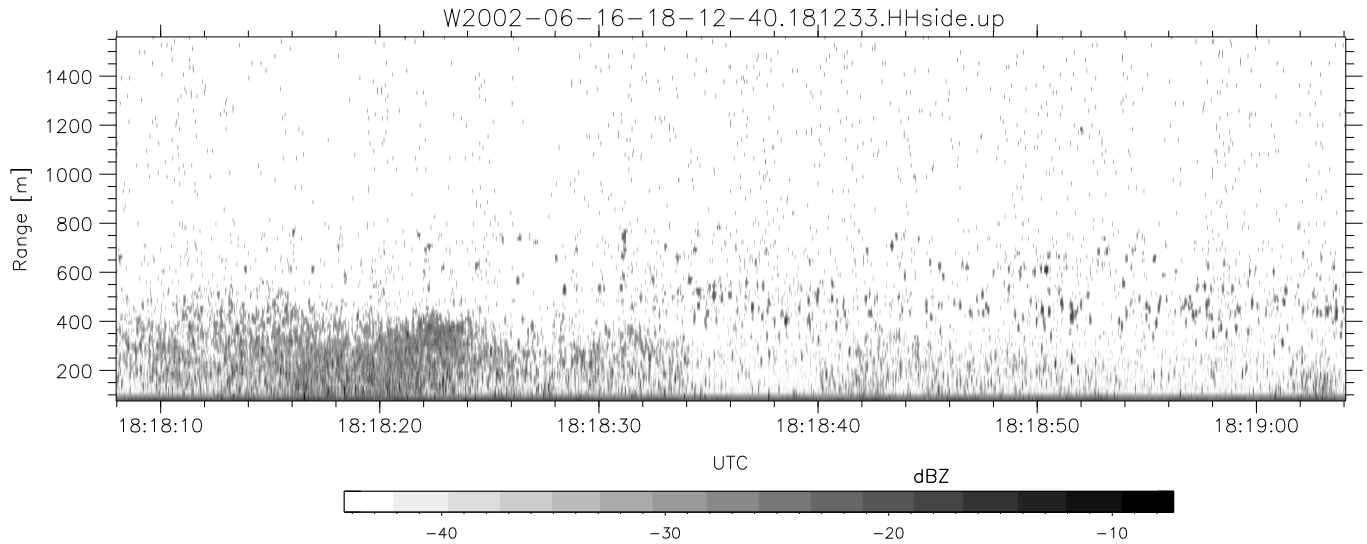
W2002-06-16-18-12-40 - PPMAG4  
 IRIG:1,UTC: 18:12:33.03 to 18:36:38.15, Dur: 1445s  
 TimeLngth: 1445.12s, TimeInt: 29ms (34.4pps)  
 TimeCor=-13.0s, DSPDif(mn,min,mx):28,28,316  
 PPS(min,max,std): 19,36,2.28  
 Prof: 553 to 50337, NumProf(t/r): 49784/17069  
 ProcTime/Recs: 18:12:33-18:20:46/0-17068  
 MxACQtime: 33ms; DRate: 192.8KB/s; Flags: 0, 0, 0  
 Pulse: 275ns, IFfilt: 5.0MHz; ppPol: HH HV VV  
 TxPol: HHVV, PRF: 20 10 20 10 kHz  
 Range: Delay 75m, Spacing 15m, Gates 100  
 Ave. Pulses: 84, Rng/Prof Aspect@90m/s: 5.7

	Min	Max	Mean	Std	Varc%
hhN (dB)	-67.77	-64.52	-66.08	-76.16	9.8
vvN (dB)	-67.99	-64.84	-66.35	-76.36	10.0
hhL (dB)	-10.12	-3.50	-5.90	-12.01	24.5
vvL (dB)	-8.72	0.02	-3.15	-7.35	38.0
ppN (m/s)	-12.63	12.30	-0.04	4.11	
ppT (m/s)	-99.79	97.14	-0.29	32.45	
hh/vv (dB)	-NaN	53.41	15.23	32.13	4894
vh/hh (dB)	-NaN	-5.81	-18.20	-12.10	407.
hv/vv (dB)	-NaN	-31.68	-53.07	-45.36	589.
hnjmp (dB)	-2.48	2.35	0.16	-8.44	13.8
vnjmp (dB)	-2.10	2.19	0.18	-8.40	13.9



IHOP 2002 (dual-antenna config, modes 1,3,4,7) Data (cal: 49.0,50.0)

W2002-06-16-18-12-40 - PPMAG4	Min	Max	Mean	Std	Varc%	
IRIG:1,UTC: 18:12:33.03 to 18:36:38.15, Dur: 1445s	hhN(dB)	-67.77	-64.52	-66.08	-76.16	9.8
TimeLngth: 1445.12s, TimeInt: 29ms (34.4pps)	vvN(dB)	-67.99	-64.84	-66.35	-76.36	10.0
TimeCor=-13.0s, DSPDif(mn,min,mx):28,28,316	hhL(dB)	-10.12	-3.50	-5.90	-12.01	24.5
PPS(min,max,std): 19,36,2.28	vvL(dB)	-8.72	0.02	-3.15	-7.35	38.0
Prof: 553 to 50337, NumProf(t/r): 49784/17069	ppN(m/s)	-12.63	12.30	-0.04	4.11	
ProcTime/Recs: 18:12:33-18:20:46/0-17068	ppT(m/s)	-99.79	97.14	-0.29	32.45	
MxAcQtime: 33ms; DRate: 192.8KB/s; Flags: 0, 0, 0	hh/vv(dB)	-NaN	53.41	15.23	32.13	4894
Pulse: 275ns, IFilt: 5.0MHz; ppPol: HH HV VV	vh/hh(dB)	-NaN	-5.81	-18.20	-12.10	407.
TxPol: HHVV, PRF: 20 10 20 10 kHz	hv/vv(dB)	-NaN	-31.68	-53.07	-45.36	589.
Range: Delay 75m, Spacing 15m, Gates 100	hnjmp(dB)	-2.48	2.35	0.16	-8.44	13.8
Ave. Pulses: 84, Rng/Prof Aspect@90m/s: 5.7	vnjmp(dB)	-2.10	2.19	0.18	-8.40	13.9



IHOP 2002 (dual-antenna config, modes 1,3,4,7) Data (cal: 49.0,50.0)

W2002-06-16-18-12-40 - PPMAG4  
 IRIG:1,UTC: 18:12:33.03 to 18:36:38.15, Dur: 1445s  
 TimeLngth: 1445.12s, TimeInt: 29ms (34.4pps)  
 TimeCor=-13.0s, DSPDif(mn,min,mx):28,28,316  
 PPS(min,max,std): 19,36,2.28  
 Prof: 553 to 50337, NumProf(t/r): 49784/17069  
 ProcTime/Recs: 18:12:33-18:20:46/0-17068  
 MxACQtime: 33ms; DRate: 192.8KB/s; Flags: 0, 0, 0  
 Pulse: 275ns, IFilt: 5.0MHz; ppPol: HH HV VV  
 TxPol: HHVV, PRF: 20 10 20 10 kHz  
 Range: Delay 75m, Spacing 15m, Gates 100  
 Ave. Pulses: 84, Rng/Prof Aspect@90m/s: 5.7

	Min	Max	Mean	Std	Varc%
hhN(dB)	-67.77	-64.52	-66.08	-76.16	9.8
vvN(dB)	-67.99	-64.84	-66.35	-76.36	10.0
hhL(dB)	-10.12	-3.50	-5.90	-12.01	24.5
vvL(dB)	-8.72	0.02	-3.15	-7.35	38.0
ppN(m/s)	-12.63	12.30	-0.04	4.11	
ppT(m/s)	-99.79	97.14	-0.29	32.45	
hh/vv(dB)	-NaN	53.41	15.23	32.13	4894
vh/hh(dB)	-NaN	-5.81	-18.20	-12.10	407.
hv/vv(dB)	-NaN	-31.68	-53.07	-45.36	589.
hnjmp(dB)	-2.48	2.35	0.16	-8.44	13.8
vnjmp(dB)	-2.10	2.19	0.18	-8.40	13.9