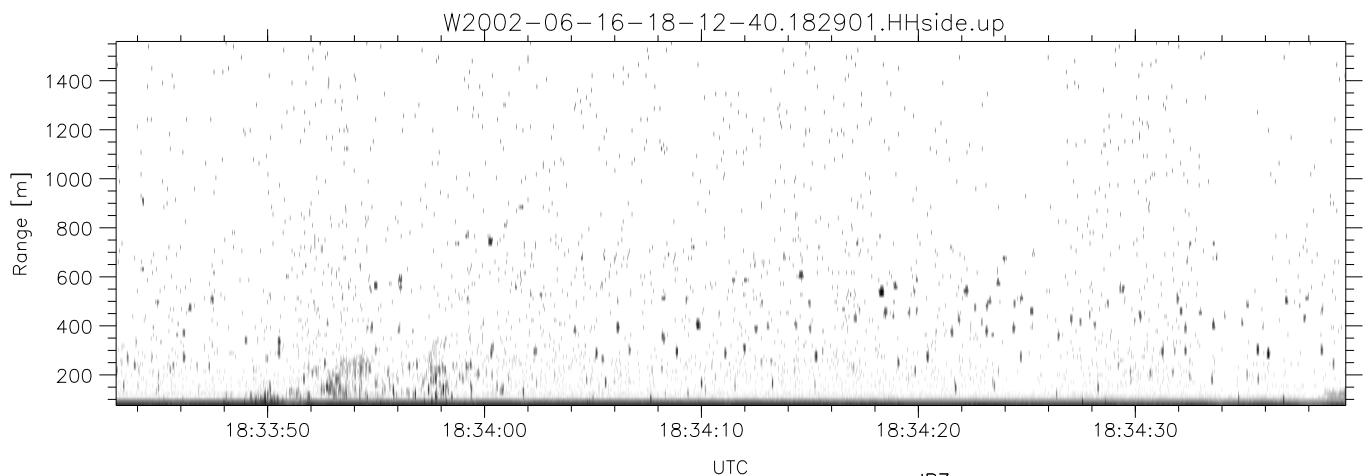
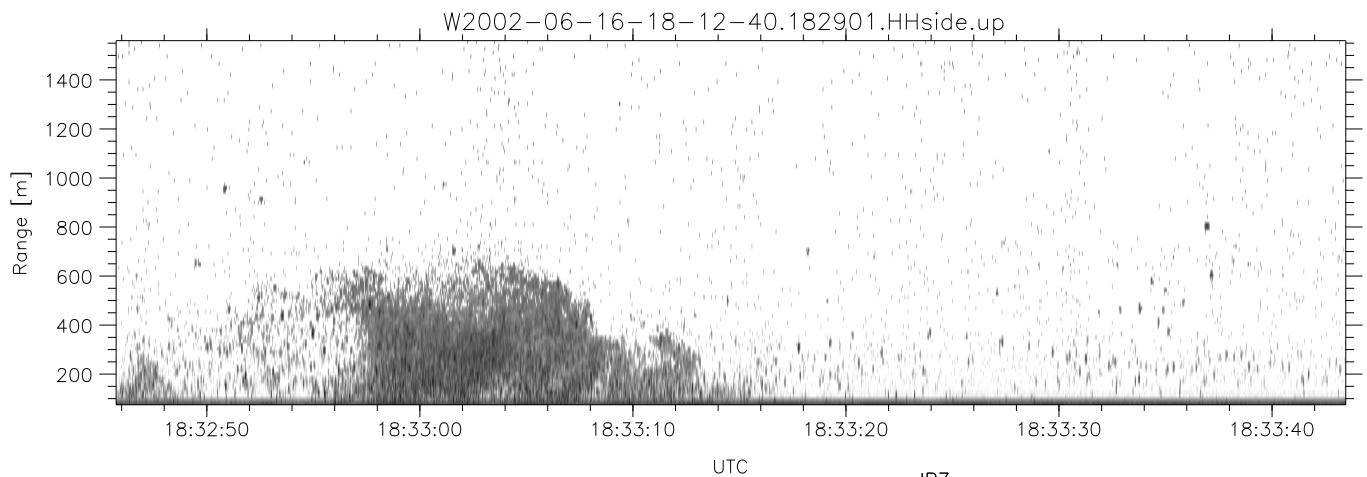
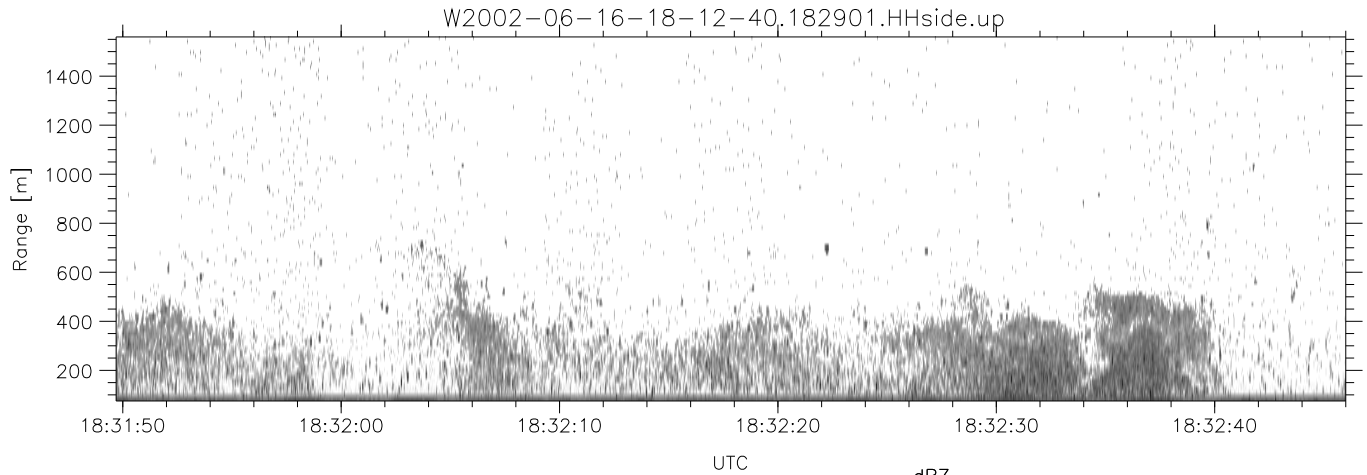


IHOP 2002 (dual-antenna config, modes 1,3,4,7) Data (cal: 49.0,50.0)

W2002-06-16-18-12-40 - PPMAG4  
 IRIG:1,UTC: 18:12:33.03 to 18:36:38.15, Dur: 1445s  
 TimeLngth: 1445.12s, TimeInt: 29ms (34.4pps)  
 TimeCor=-13.0s, DSPDif(mn,min,mx):29,28,308  
 PPS(min,max,std): 18,36,2.41  
 Prof: 553 to 50337, NumProf(t/r): 49784/15646  
 ProcTime/Recs: 18:29:01-18:36:38/34138-49783  
 MxACQtime: 33ms; DRate: 192.8KB/s; Flags: 0, 0, 0  
 Pulse: 275ns, IFilt: 5.0MHz; ppPol: HH HV VV  
 TxPol: HHVV, PRF: 20 10 20 10 kHz  
 Range: Delay 75m, Spacing 15m, Gates 100  
 Ave. Pulses: 84, Rng/Prof Aspect@90m/s: 5.7

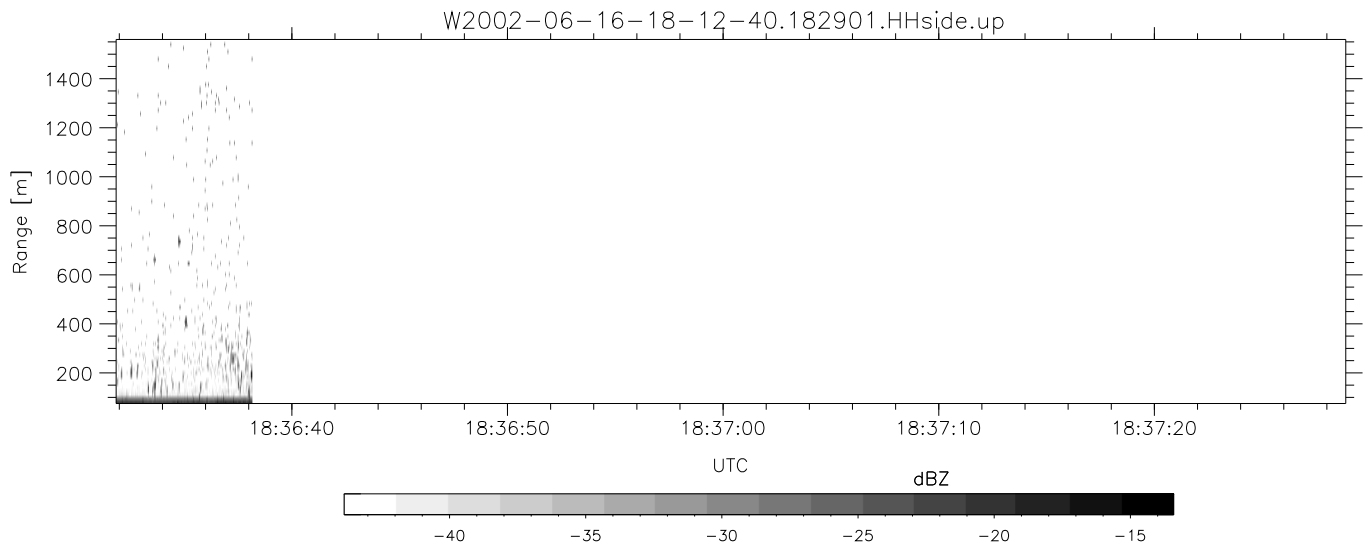
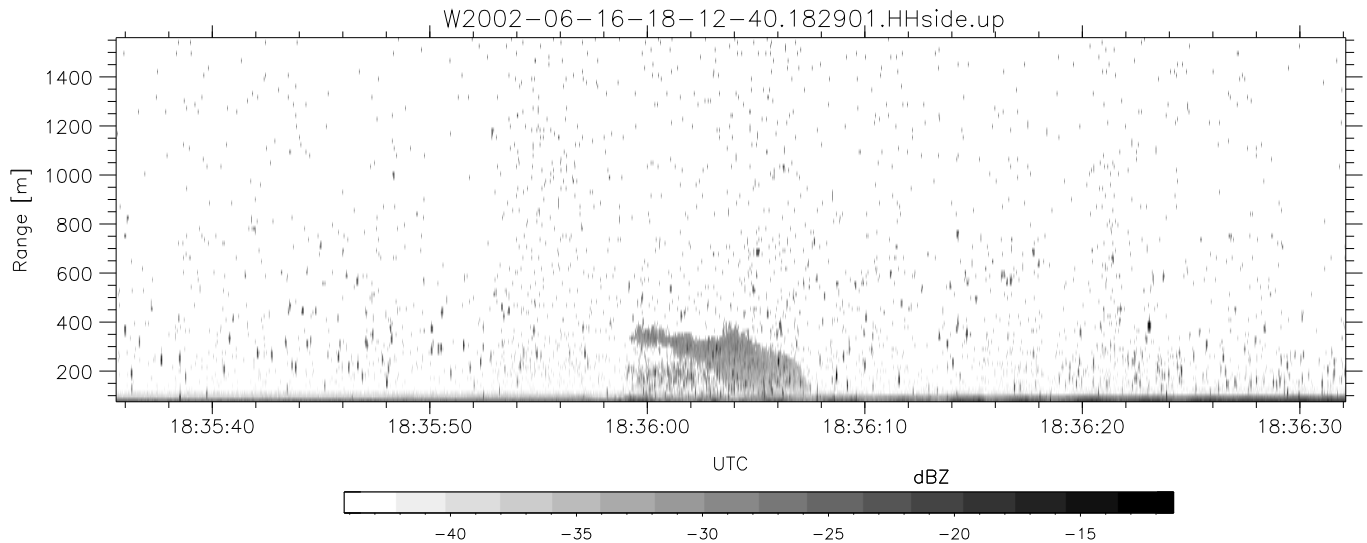
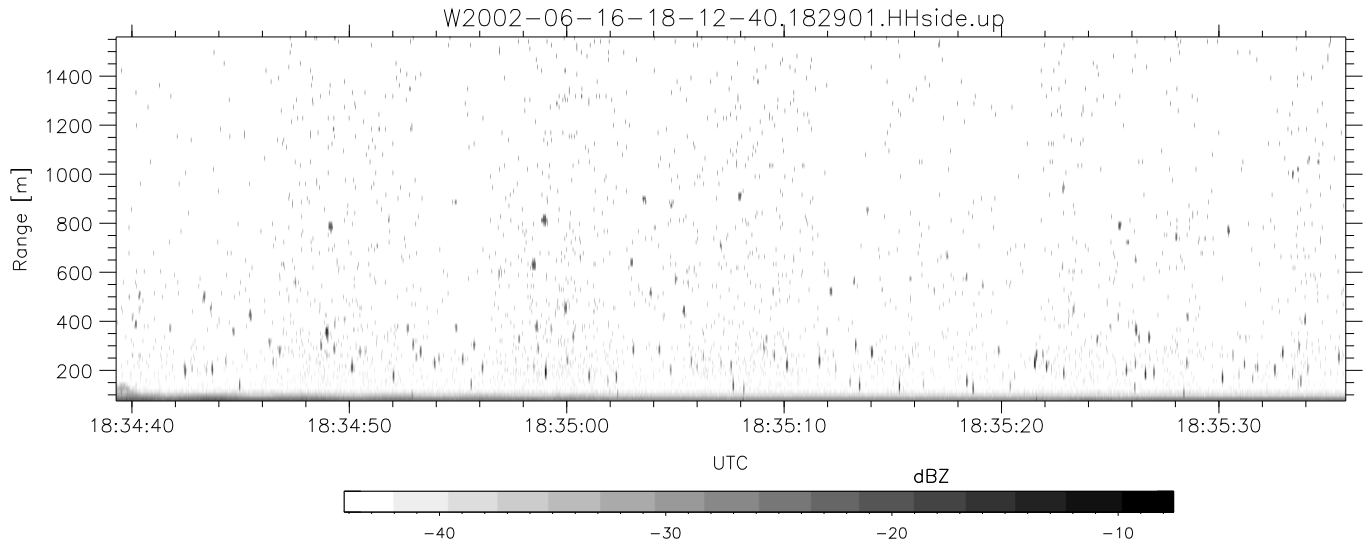
	Min	Max	Mean	Std	Varc%
hhN(dB)	-67.83	-64.24	-66.13	-76.16	9.9
vvN(dB)	-68.26	-64.90	-66.42	-76.40	10.0
hhL(dB)	-19.98	-3.47	-7.03	-10.55	44.5
vvL(dB)	-5.49	0.41	-2.52	-8.15	27.3
ppN(m/s)	-12.57	12.28	-0.04	4.17	
ppT(m/s)	-99.30	97.01	-0.34	32.91	
hh/vv(dB)	-NaN	44.49	-NaN	42.68	-126
vh/hh(dB)	-NaN	-32.60	-36.47	-37.27	83.1
hv/vv(dB)	-NaN	-35.29	-55.98	-46.66	854.
hnjmp(dB)	-1.90	2.29	0.18	-8.41	13.8
vnjmp(dB)	-2.18	2.51	0.18	-8.37	14.0



IHOP 2002 (dual-antenna config, modes 1,3,4,7) Data (cal: 49.0,50.0)

W2002-06-16-18-12-40 - PPMAG4  
 IRIG:1,UTC: 18:12:33.03 to 18:36:38.15, Dur: 1445s  
 TimeLngth: 1445.12s, TimeInt: 29ms (34.4pps)  
 TimeCor=-13.0s, DSPDif(mn,min,mx):29,28,308  
 PPS(min,max,std): 18,36,2.41  
 Prof: 553 to 50337, NumProf(t/r): 49784/15646  
 ProcTime/Recs: 18:29:01-18:36:38/34138-49783  
 MxACQtime: 33ms; DRate: 192.8KB/s; Flags: 0, 0, 0  
 Pulse: 275ns, IFfilt: 5.0MHz; ppPol: HH HV VV  
 TxPol: HHVV, PRF: 20 10 20 10 kHz  
 Range: Delay 75m, Spacing 15m, Gates 100  
 Ave. Pulses: 84, Rng/Prof Aspect@90m/s: 5.7

	Min	Max	Mean	Std	Varc%
hhN(dB)	-67.83	-64.24	-66.13	-76.16	9.9
vvN(dB)	-68.26	-64.90	-66.42	-76.40	10.0
hhL(dB)	-19.98	-3.47	-7.03	-10.55	44.5
vvL(dB)	-5.49	0.41	-2.52	-8.15	27.3
ppN(m/s)	-12.57	12.28	-0.04	4.17	
ppT(m/s)	-99.30	97.01	-0.34	32.91	
hh/vv(dB)	-NaN	44.49	-NaN	42.68	-126
vh/hh(dB)	-NaN	-32.60	-36.47	-37.27	83.1
hv/vv(dB)	-NaN	-35.29	-55.98	-46.66	854.
hnjmp(dB)	-1.90	2.29	0.18	-8.41	13.8
vnjmp(dB)	-2.18	2.51	0.18	-8.37	14.0



IHOP 2002 (dual-antenna config, modes 1,3,4,7) Data (cal: 49.0,50.0)

W2002-06-16-18-12-40 - PPMAG4	Min	Max	Mean	Std	Varc%
IRIG:1,UTC: 18:12:33.03 to 18:36:38.15, Dur: 1445s	-67.83	-64.24	-66.13	-76.16	9.9
TimeLngth: 1445.12s, TimeInt: 29ms (34.4pps)	-68.26	-64.90	-66.42	-76.40	10.0
TimeCor=-13.0s, DSPDif(mn,min,mx):29,28,308	-19.98	-3.47	-7.03	-10.55	44.5
PPS(min,max,std): 18,36,2.41	-5.49	0.41	-2.52	-8.15	27.3
Prof: 553 to 50337, NumProf(t/r): 49784/15646	ppN(m/s)	-12.57	12.28	-0.04	4.17
ProcTime/Recs: 18:29:01-18:36:38/34138-49783	ppT(m/s)	-99.30	97.01	-0.34	32.91
MxACQtime: 33ms; DRate: 192.8KB/s; Flags: 0, 0, 0	hh/vv(dB)	-NaN	44.49	-NaN	42.68 -126
Pulse: 275ns, IFfilt: 5.0MHz; ppPol: HH HV VV	vh/hh(dB)	-NaN	-32.60	-36.47	-37.27 83.1
TxPol: HHVV, PRF: 20 10 20 10 kHz	hv/vv(dB)	-NaN	-35.29	-55.98	-46.66 854.
Range: Delay 75m, Spacing 15m, Gates 100	hnjmp(dB)	-1.90	2.29	0.18	-8.41 13.8
Ave. Pulses: 84, Rng/Prof Aspect@90m/s: 5.7	vnjmp(dB)	-2.18	2.51	0.18	-8.37 14.0