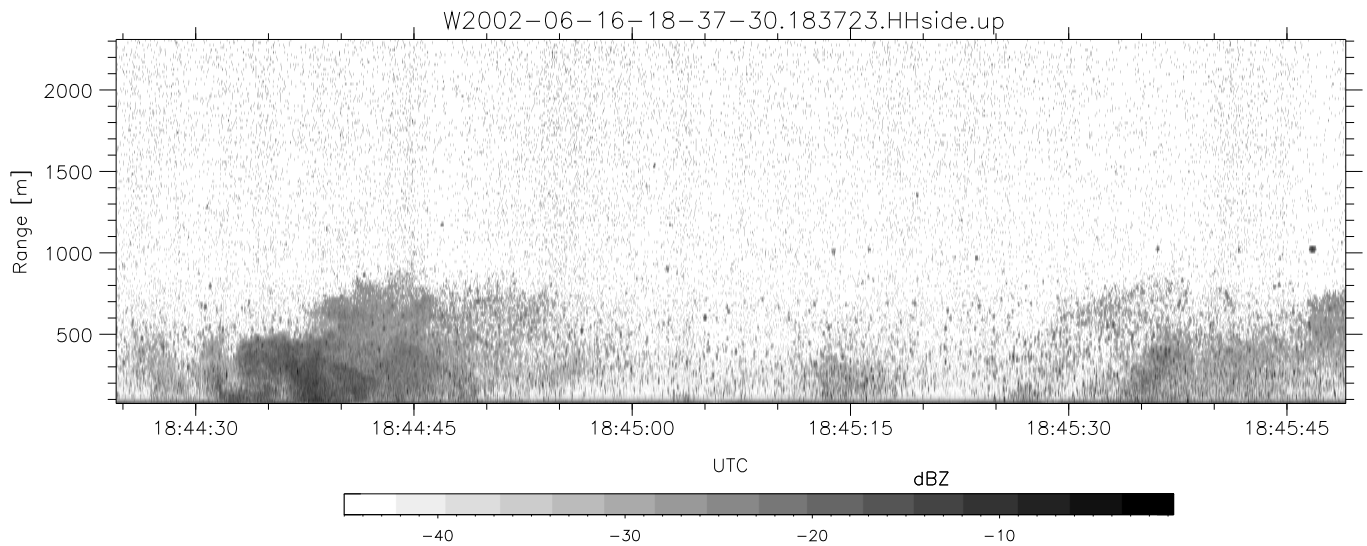
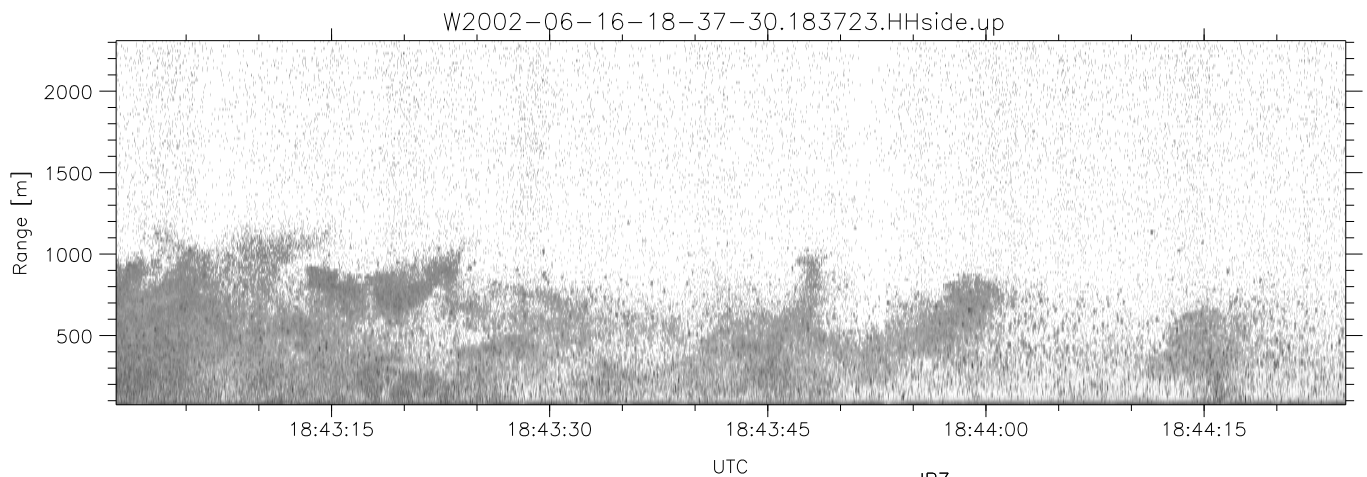
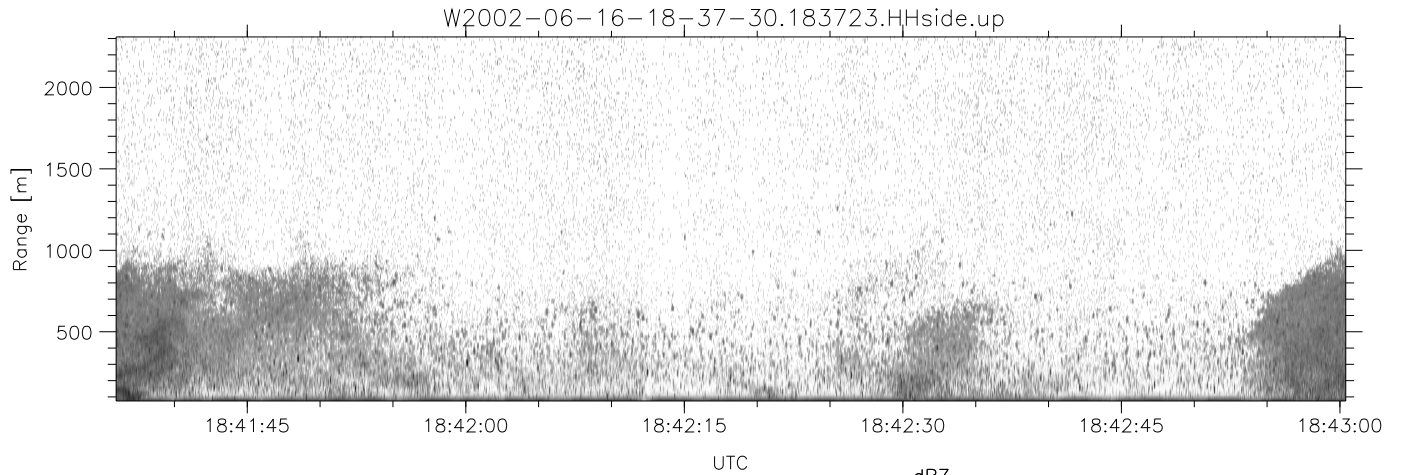


IHOP 2002 (dual-antenna config, modes 1,3,4,7) Data (cal: 49.0,50.0)

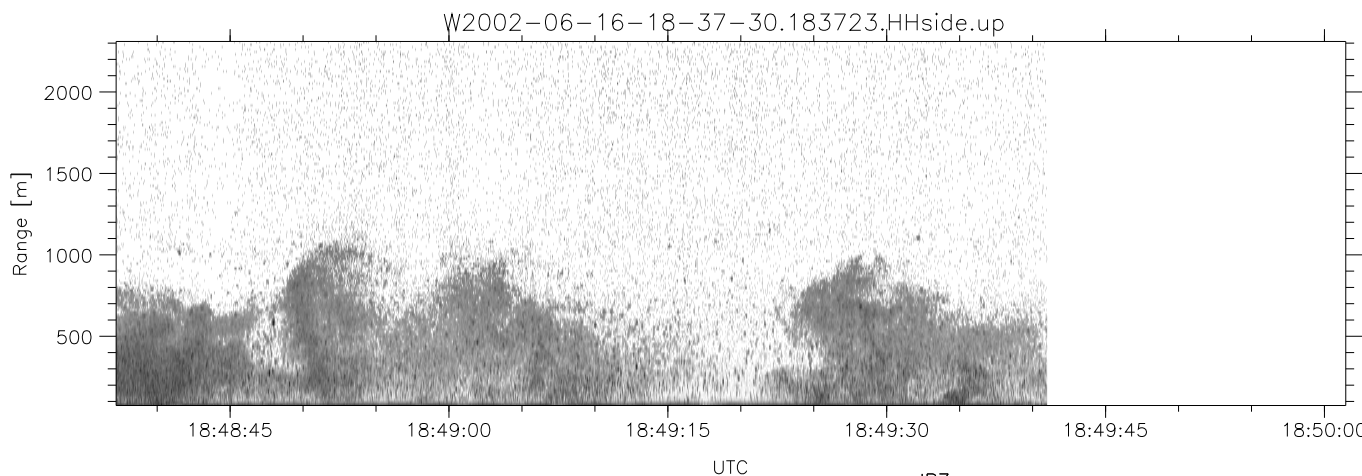
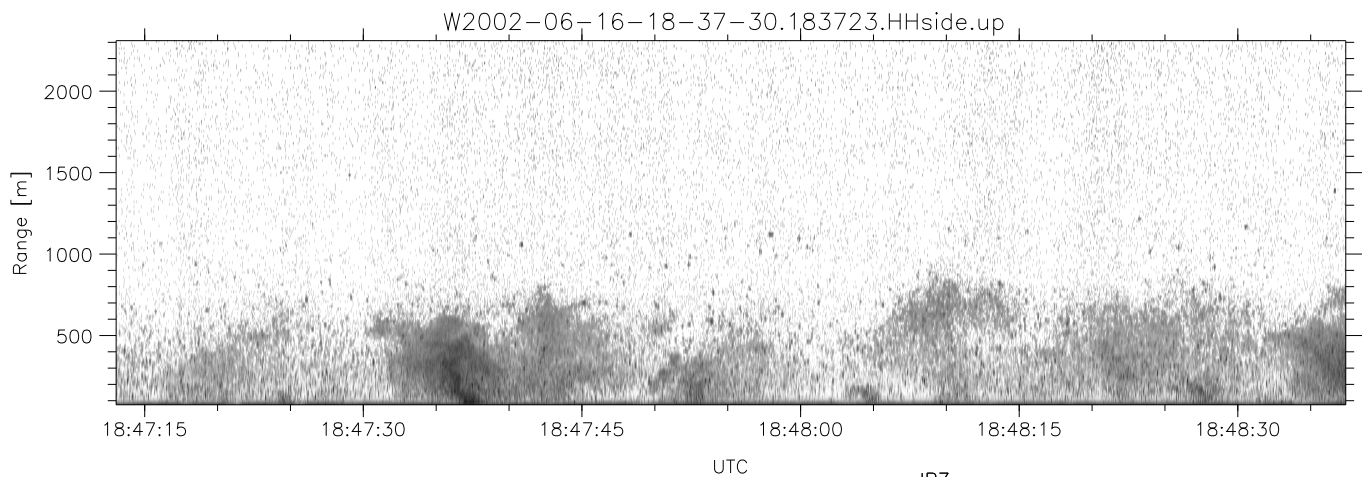
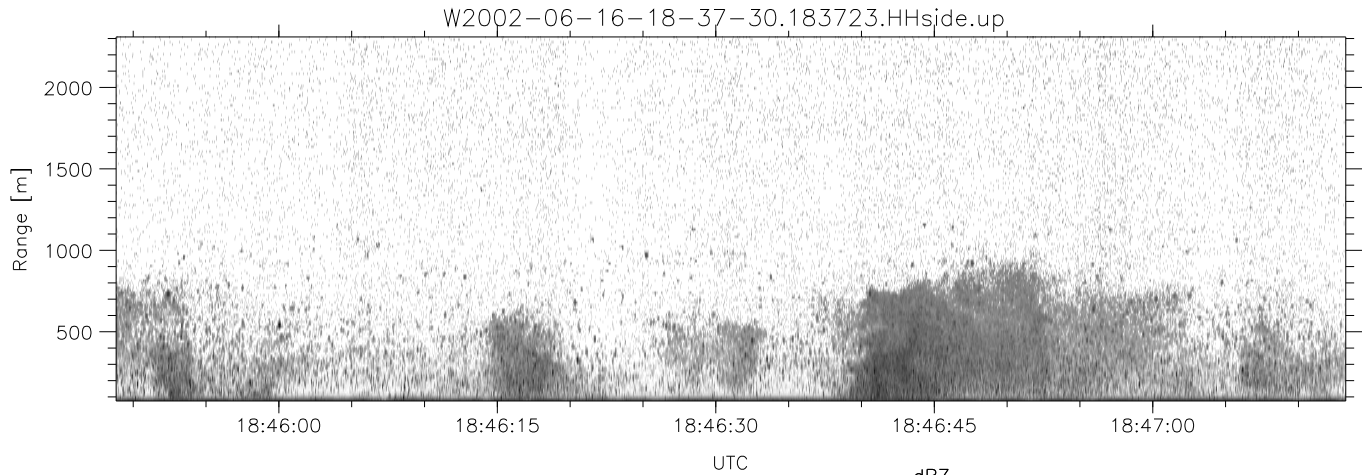
W2002-06-16-18-37-30 - SPPMAG	Min	Max	Mean	Std	Varc%	
IRIG:1,UTC: 18:37:23.66 to 18:52:08.28, Dur: 885s	hhN(dB)	-67.18	-65.15	-66.06	-79.03	5.0
TimeLngth: 884.63s, TimeInt: 24ms (40.8pps)	vvN(dB)	-67.43	-65.49	-66.41	-79.36	5.1
TimeCor=-13.0s, DSPDif(mn,min,mx):23,20,290	hhL(dB)	-13.99	-2.73	-5.04	-10.23	30.3
PPS(min,max,std): 28,42,2.46	vhL(dB)	-25.88	-4.09	-6.61	-11.35	33.6
Prof: 388 to 36521, NumProf(t/r): 36133/30122	ppN(m/s)	-15.80	15.80	-0.02	9.02	
ProcTime/Recs: 18:37:23-18:49:40/0-30121	ppT(m/s)	-0.04	0.02	-0.00	0.01	
MxACQtime: 17ms; DRate: 97.8KB/s; Flags: 0, 0, 0	vh/hh(dB)	-NaN	-6.16	-23.03	-16.31	469.
Pulse: 275ns, IFfilt: 5.0MHz; ppPol: HH	hn_jmp(dB)	-1.35	1.03	-0.11	-11.74	6.9
TxPol: H, PRF: 20 kHz	vn_jmp(dB)	-1.48	0.95	-0.12	-11.73	6.9
Range: Delay 75m, Spacing 15m, Gates 150						
Ave. Pulses: 348, Rng/Prof Aspect@90m/s: 6.8						



IHOP 2002 (dual-antenna config, modes 1,3,4,7) Data (cal: 49.0,50.0)

W2002-06-16-18-37-30 - SPPMAG
 IRIG:1,UTC: 18:37:23.66 to 18:52:08.28, Dur: 885s
 TimeLngth: 884.63s, TimeInt: 24ms (40.8pps)
 TimeCor=-13.0s, DSPDif(mn,min,mx):23,20,290
 PPS(min,max,std): 28,42,2.46
 Prof: 388 to 36521, NumProf(t/r): 36133/30122
 ProcTime/Recs: 18:37:23-18:49:40/0-30121
 MxACQtime: 17ms; DRate: 97.8KB/s; Flags: 0, 0, 0
 Pulse: 275ns, IFfilt: 5.0MHz; ppPol: HH
 TxPol: H, PRF: 20 kHz
 Range: Delay 75m, Spacing 15m, Gates 150
 Ave. Pulses: 348, Rng/Prof Aspect@90m/s: 6.8

	Min	Max	Mean	Std	Varc%
hhN(dB)	-67.18	-65.15	-66.06	-79.03	5.0
vvN(dB)	-67.43	-65.49	-66.41	-79.36	5.1
hhL(dB)	-13.99	-2.73	-5.04	-10.23	30.3
vhL(dB)	-25.88	-4.09	-6.61	-11.35	33.6
ppN(m/s)	-15.80	15.80	-0.02	9.02	
ppT(m/s)	-0.04	0.02	-0.00	0.01	
vh/hh(dB)	-NaN	-6.16	-23.03	-16.31	469.
hnjmp(dB)	-1.35	1.03	-0.11	-11.74	6.9
vnjmp(dB)	-1.48	0.95	-0.12	-11.73	6.9



IHOP 2002 (dual-antenna config, modes 1,3,4,7) Data (cal: 49.0,50.0)

W2002-06-16-18-37-30 - SPPMAG
 IRIG:1,UTC: 18:37:23.66 to 18:52:08.28, Dur: 885s
 TimeLngth: 884.63s, TimeInt: 24ms (40.8pps)
 TimeCor=-13.0s, DSPDif(mn,min,mx):23,20,290
 PPS(min,max,std): 28,42,2.46
 Prof: 388 to 36521, NumProf(t/r): 36133/30122
 ProcTime/Recs: 18:37:23-18:49:40/0-30121
 MxACQtime: 17ms; DRate: 97.8KB/s; Flags: 0, 0, 0
 Pulse: 275ns, IFfilt: 5.0MHz; ppPol: HH
 TxPol: H, PRF: 20 kHz
 Range: Delay 75m, Spacing 15m, Gates 150
 Ave. Pulses: 348, Rng/Prof Aspect@90m/s: 6.8

	Min	Max	Mean	Std	Varc%
hhN(dB)	-67.18	-65.15	-66.06	-79.03	5.0
vvN(dB)	-67.43	-65.49	-66.41	-79.36	5.1
hhL(dB)	-13.99	-2.73	-5.04	-10.23	30.3
vhL(dB)	-25.88	-4.09	-6.61	-11.35	33.6
ppN(m/s)	-15.80	15.80	-0.02	9.02	
ppT(m/s)	-0.04	0.02	-0.00	0.01	
vh/hh(dB)	-NaN	-6.16	-23.03	-16.31	469.
hnjmp(dB)	-1.35	1.03	-0.11	-11.74	6.9
vnjmp(dB)	-1.48	0.95	-0.12	-11.73	6.9