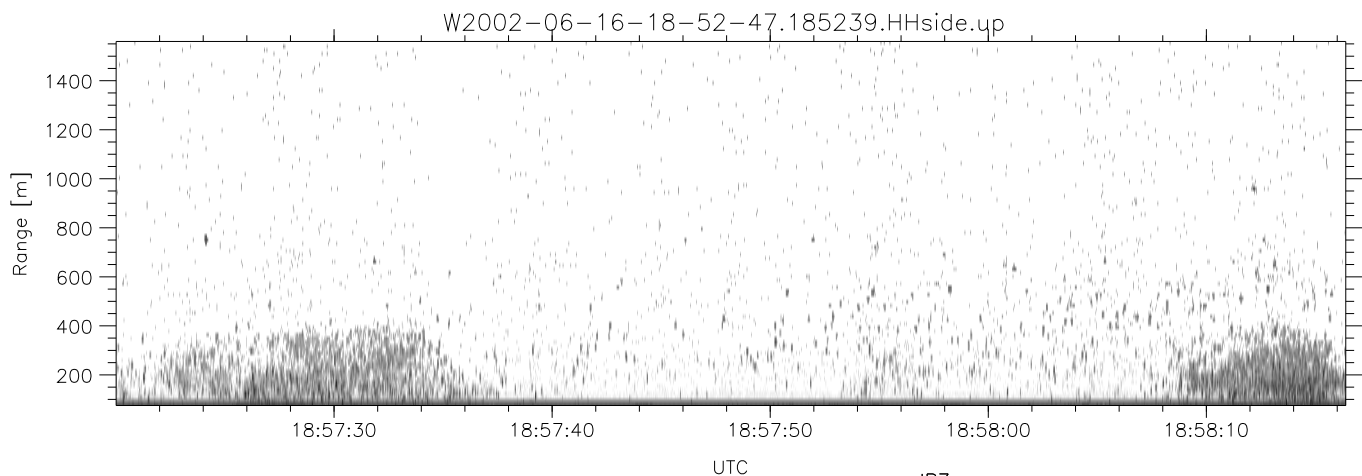
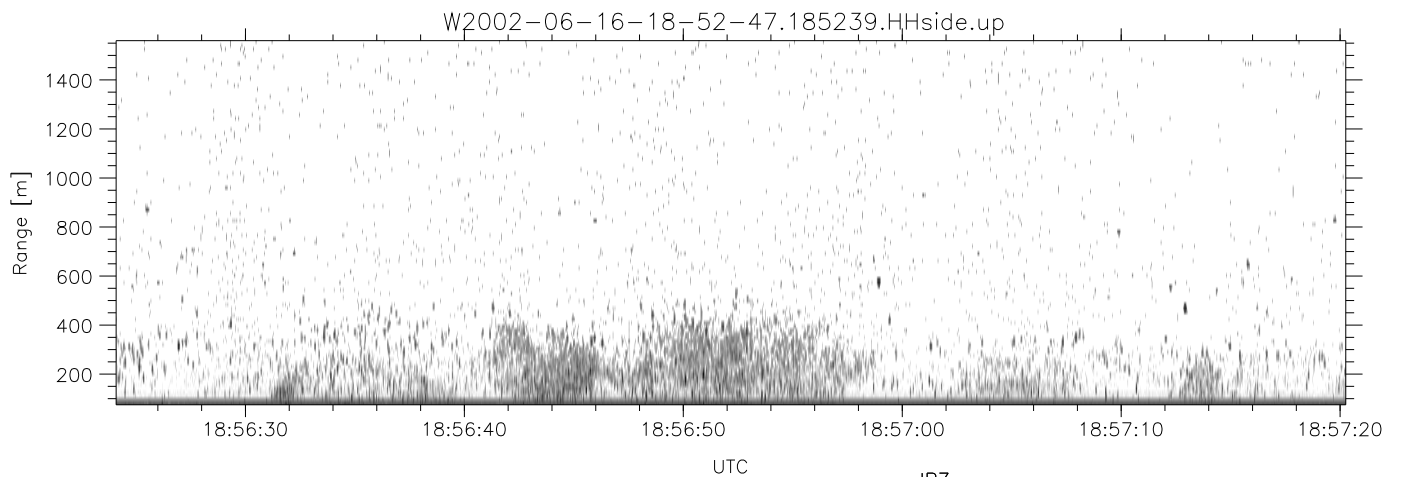
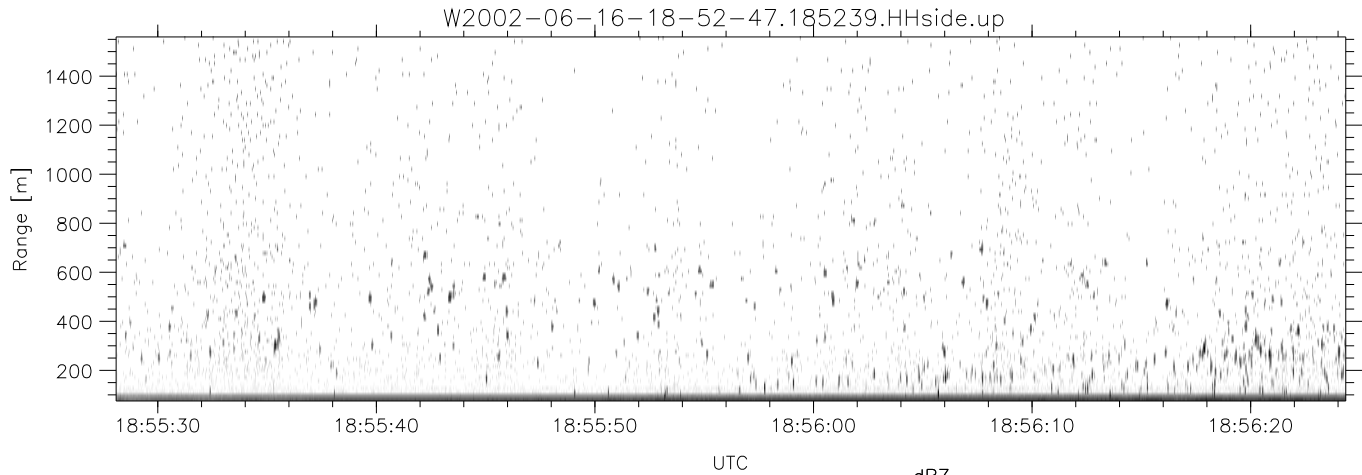


IHOP 2002 (dual-antenna config, modes 1,3,4,7) Data (cal: 49.0,50.0)

W2002-06-16-18-52-47 - PPMAG4
 IRIG:1,UTC: 18:52:39.91 to 19:14:23.05, Dur: 1304s
 TimeLngth: 1303.14s, TimeInt: 29ms (34.1pps)
 TimeCor=-13.0s, DSPDif(mn,min,mx):29,28,683
 PPS(min,max,std): 22,36,2.41
 Prof: 263 to 44678, NumProf(t/r): 44415/17069
 ProcTime/Recs: 18:52:39-19:01:00/0-17068
 MxACQtime: 33ms; DRate: 190.8KB/s; Flags: 0, 0, 0
 Pulse: 275ns, IFilt: 5.0MHz; ppPol: HH HV VV
 TxPol: HHVV, PRF: 20 10 20 10 kHz
 Range: Delay 75m, Spacing 15m, Gates 100
 Ave. Pulses: 84, Rng/Prof Aspect@90m/s: 5.7

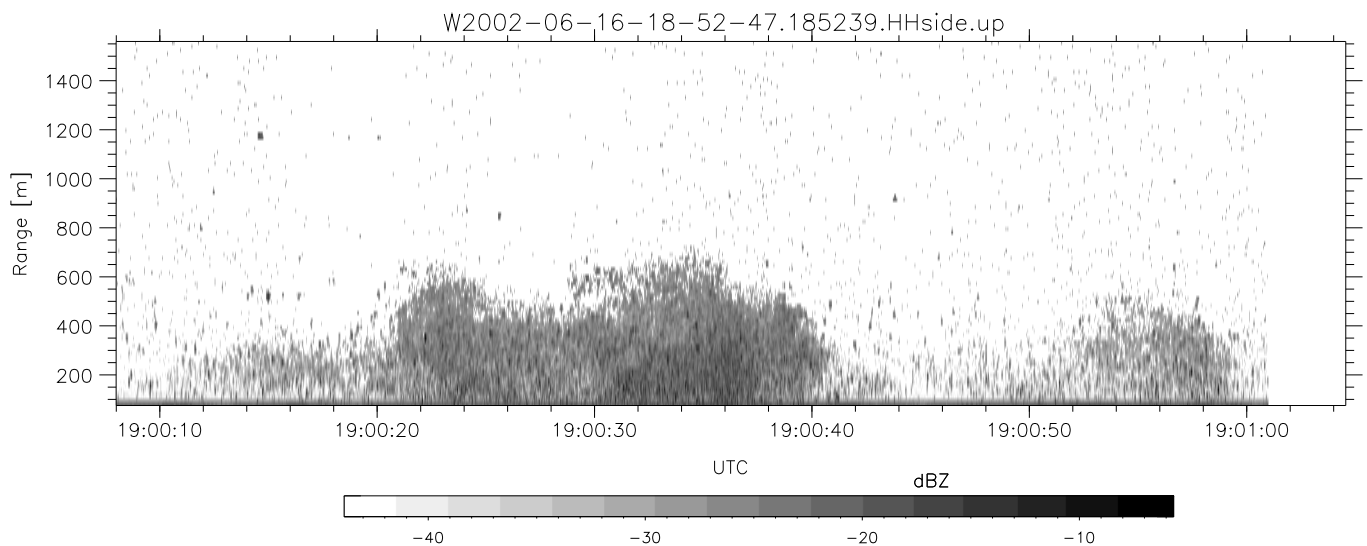
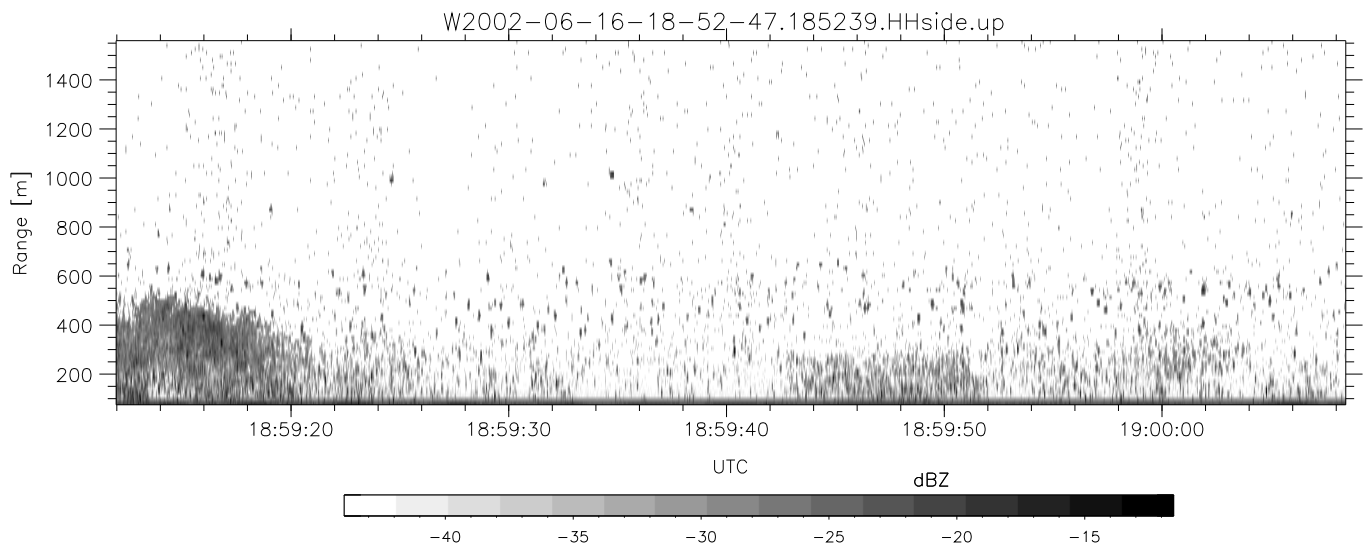
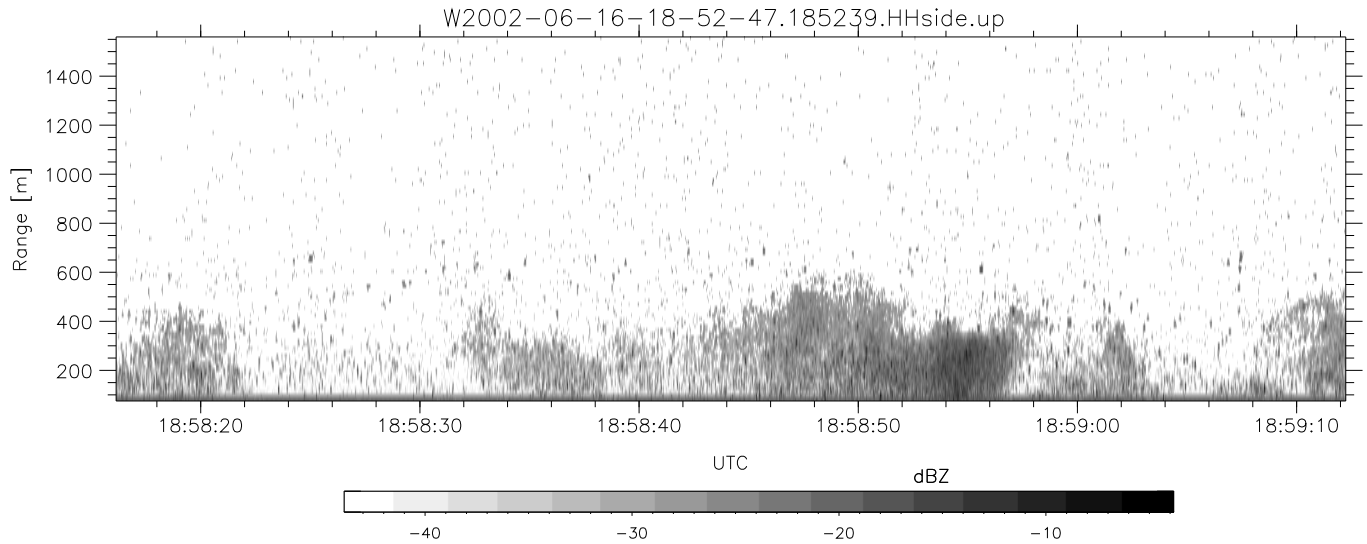
	Min	Max	Mean	Std	Varc%
hhN(dB)	-68.07	-64.55	-66.12	-76.20	9.8
vvN(dB)	-68.34	-64.61	-66.41	-76.36	10.1
hhL(dB)	-10.94	-3.17	-5.62	-12.34	21.3
vvL(dB)	-7.24	0.04	-2.60	-8.11	28.1
ppN(m/s)	-13.02	12.32	-0.02	4.13	
ppT(m/s)	-102.8	97.31	-0.16	32.60	
hh/vv(dB)	-NaN	53.68	16.61	33.65	5059
vh/hh(dB)	-NaN	-30.31	-34.87	-34.92	98.7
hv/vv(dB)	-NaN	-34.74	-56.14	-46.31	962.0
hnjmp(dB)	-2.30	2.52	0.15	-8.43	13.9
vnjmp(dB)	-2.14	2.40	0.17	-8.33	14.1



IHOP 2002 (dual-antenna config, modes 1,3,4,7) Data (cal: 49.0,50.0)

W2002-06-16-18-52-47 - PPMAG4
 IRIG:1,UTC: 18:52:39.91 to 19:14:23.05, Dur: 1304s
 TimeLngth: 1303.14s, TimeInt: 29ms (34.1pps)
 TimeCor=-13.0s, DSPDif(mn,min,mx):29,28,683
 PPS(min,max,std): 22,36,2.41
 Prof: 263 to 44678, NumProf(t/r): 44415/17069
 ProcTime/Recs: 18:52:39-19:01:00/0-17068
 MxACQtime: 33ms; DRate: 190.8KB/s; Flags: 0, 0, 0
 Pulse: 275ns, IFfilt: 5.0MHz; ppPol: HH HV VV
 TxPol: HHVV, PRF: 20 10 20 10 kHz
 Range: Delay 75m, Spacing 15m, Gates 100
 Ave. Pulses: 84, Rng/Prof Aspect@90m/s: 5.7

	Min	Max	Mean	Std	Varc%
hhN(dB)	-68.07	-64.55	-66.12	-76.20	9.8
vvN(dB)	-68.34	-64.61	-66.41	-76.36	10.1
hhL(dB)	-10.94	-3.17	-5.62	-12.34	21.3
vvL(dB)	-7.24	0.04	-2.60	-8.11	28.1
ppN(m/s)	-13.02	12.32	-0.02	4.13	
ppT(m/s)	-102.8	97.31	-0.16	32.60	
hh/vv(dB)	-NaN	53.68	16.61	33.65	5059
vh/hh(dB)	-NaN	-30.31	-34.87	-34.92	98.7
hv/vv(dB)	-NaN	-34.74	-56.14	-46.31	962.
hn_jmp(dB)	-2.30	2.52	0.15	-8.43	13.9
vn_jmp(dB)	-2.14	2.40	0.17	-8.33	14.1



IHOP 2002 (dual-antenna config, modes 1,3,4,7) Data (cal: 49.0,50.0)

W2002-06-16-18-52-47 - PPMAG4	Min	Max	Mean	Std	Varc%	
IRIG:1,UTC: 18:52:39.91 to 19:14:23.05, Dur: 1304s	-68.07	-64.55	-66.12	-76.20	9.8	
TimeLngth: 1303.14s, TimeInt: 29ms (34.1pps)	-68.34	-64.61	-66.41	-76.36	10.1	
TimeCor=-13.0s, DSPDif(mn,min,mx):29,28,683	-10.94	-3.17	-5.62	-12.34	21.3	
PPS(min,max,std): 22,36,2.41	-7.24	0.04	-2.60	-8.11	28.1	
Prof: 263 to 44678, NumProf(t/r): 44415/17069	ppN(m/s)	-13.02	12.32	-0.02	4.13	
ProcTime/Recs: 18:52:39-19:01:00/0-17068	ppT(m/s)	-102.8	97.31	-0.16	32.60	
MxACQtime: 33ms; DRate: 190.8KB/s; Flags: 0, 0, 0	hh/vv(dB)	-NaN	53.68	16.61	33.65	5059
Pulse: 275ns, IFfilt: 5.0MHz; ppPol: HH HV VV	vh/hh(dB)	-NaN	-30.31	-34.87	-34.92	98.7
TxPol: HHVV, PRF: 20 10 20 10 kHz	hv/vv(dB)	-NaN	-34.74	-56.14	-46.31	962.
Range: Delay 75m, Spacing 15m, Gates 100	hn/jmp(dB)	-2.30	2.52	0.15	-8.43	13.9
Ave. Pulses: 84, Rng/Prof Aspect@90m/s: 5.7	vn/jmp(dB)	-2.14	2.40	0.17	-8.33	14.1