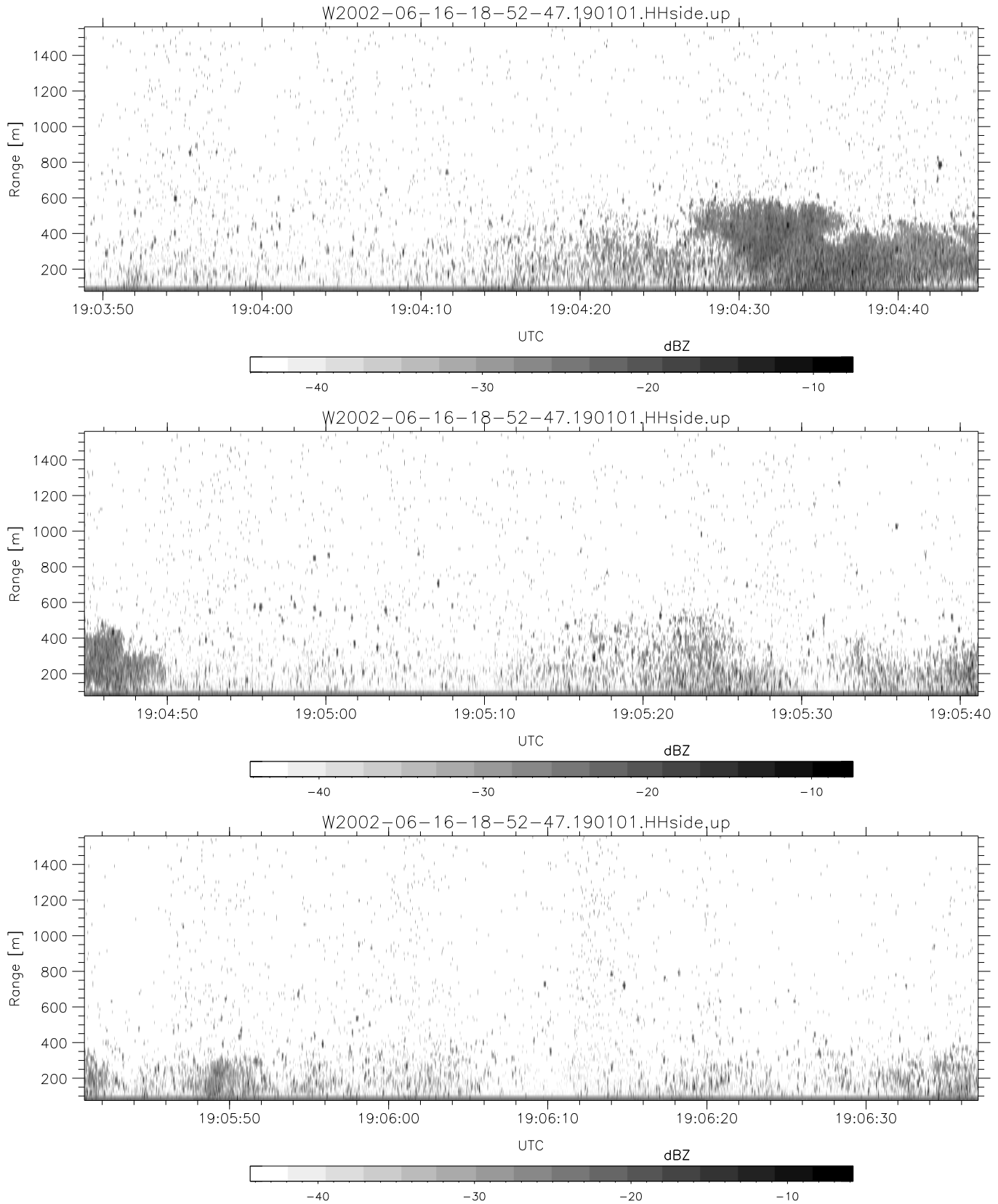


IHOP 2002 (dual-antenna config, modes 1,3,4,7) Data (cal: 49.0,50.0)

W2002-06-16-18-52-47 - PPMAG4  
 IRIG:1,UTC: 18:52:39.91 to 19:14:23.05, Dur: 1304s  
 TimeLngth: 1303.14s, TimeInt: 29ms (34.1pps)  
 TimeCor=-13.0s, DSPDif(mn,min,mx):29,28,373  
 PPS(min,max,std): 23,36,2.27  
 Prof: 263 to 44678, NumProf(t/r): 44415/17069  
 ProcTime/Recs: 19:01:01-19:09:21/17069-34137  
 MxACQtime: 33ms; DRate: 190.8KB/s; Flags: 0, 0, 0  
 Pulse: 275ns, IFfilt: 5.0MHz; ppPol: HH HV VV  
 TxPol: HHVV, PRF: 20 10 20 10 kHz  
 Range: Delay 75m, Spacing 15m, Gates 100  
 Ave. Pulses: 84, Rng/Prof Aspect@90m/s: 5.7

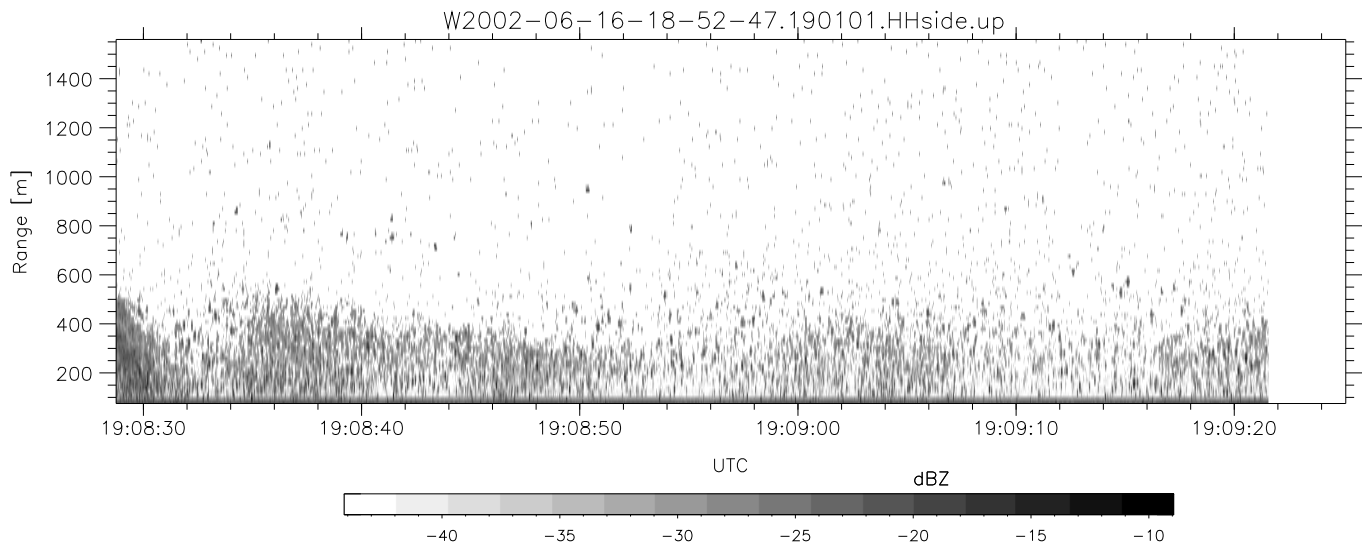
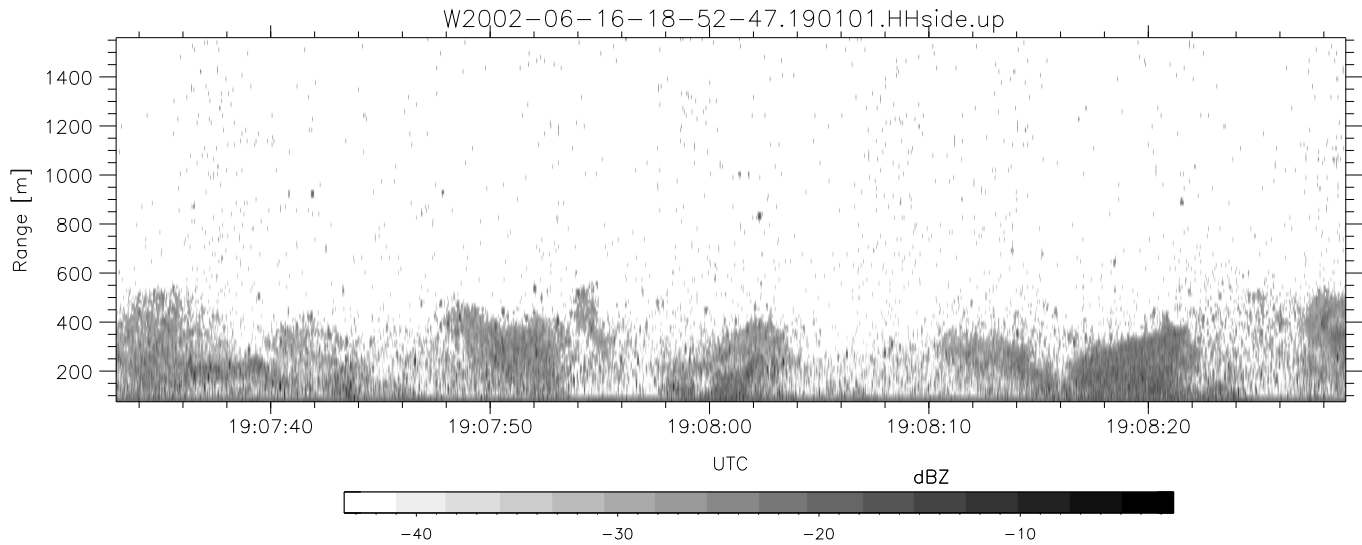
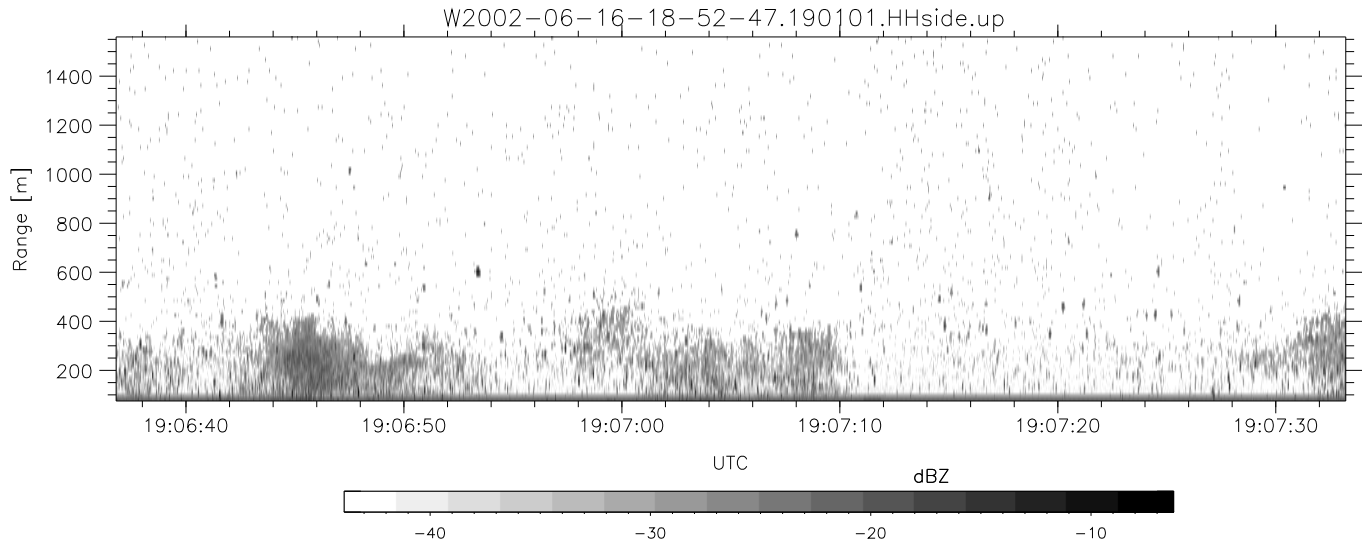
	Min	Max	Mean	Std	Varc%
hhN(dB)	-68.26	-64.60	-66.13	-76.14	10.0
vvN(dB)	-68.38	-64.81	-66.42	-76.40	10.0
hhL(dB)	-8.45	-4.30	-5.95	-15.26	11.7
vvL(dB)	-4.78	-0.50	-3.13	-11.09	16.0
ppN(m/s)	-12.34	12.96	-0.12	4.15	
ppT(m/s)	-97.51	102.35	-0.98	32.78	
hh/vv(dB)	-NaN	48.63	13.34	30.61	5337
vh/hh(dB)	-NaN	-32.76	-37.39	-37.43	99.1
hv/vv(dB)	-NaN	-33.65	-54.77	-46.69	643.
hnjmp(dB)	-2.51	1.98	-0.08	-8.57	14.2
vnjmp(dB)	-2.43	2.13	-0.09	-8.60	14.1



IHOP 2002 (dual-antenna config, modes 1,3,4,7) Data (cal: 49.0,50.0)

W2002-06-16-18-52-47 - PPMAG4  
 IRIG:1,UTC: 18:52:39.91 to 19:14:23.05, Dur: 1304s  
 TimeLngth: 1303.14s, TimeInt: 29ms (34.1pps)  
 TimeCor=-13.0s, DSPDif(mn,min,mx):29,28,373  
 PPS(min,max,std): 23,36,2.27  
 Prof: 263 to 44678, NumProf(t/r): 44415/17069  
 ProcTime/Recs: 19:01:01-19:09:21/17069-34137  
 MxACQtime: 33ms; DRate: 190.8KB/s; Flags: 0, 0, 0  
 Pulse: 275ns, IFfilt: 5.0MHz; ppPol: HH HV VV  
 TxPol: HHVV, PRF: 20 10 20 10 kHz  
 Range: Delay 75m, Spacing 15m, Gates 100  
 Ave. Pulses: 84, Rng/Prof Aspect@90m/s: 5.7

	Min	Max	Mean	Std	Varc%
hhN(dB)	-68.26	-64.60	-66.13	-76.14	10.0
vvN(dB)	-68.38	-64.81	-66.42	-76.40	10.0
hhL(dB)	-8.45	-4.30	-5.95	-15.26	11.7
vvL(dB)	-4.78	-0.50	-3.13	-11.09	16.0
ppN(m/s)	-12.34	12.96	-0.12	4.15	
ppT(m/s)	-97.51	102.35	-0.98	32.78	
hh/vv(dB)	-NaN	48.63	13.34	30.61	5337
vh/hh(dB)	-NaN	-32.76	-37.39	-37.43	99.1
hv/vv(dB)	-NaN	-33.65	-54.77	-46.69	643.
hnjmp(dB)	-2.51	1.98	-0.08	-8.57	14.2
vnjmp(dB)	-2.43	2.13	-0.09	-8.60	14.1



IHOP 2002 (dual-antenna config, modes 1,3,4,7) Data (cal: 49.0,50.0)

W2002-06-16-18-52-47 - PPMAG4	Min	Max	Mean	Std	Varc%
IRIG:1,UTC: 18:52:39.91 to 19:14:23.05, Dur: 1304s	-68.26	-64.60	-66.13	-76.14	10.0
TimeLngth: 1303.14s, TimeInt: 29ms (34.1pps)	-68.38	-64.81	-66.42	-76.40	10.0
TimeCor=-13.0s, DSPDif(mn,min,mx):29,28,373	-8.45	-4.30	-5.95	-15.26	11.7
PPS(min,max,std): 23,36,2.27	-4.78	-0.50	-3.13	-11.09	16.0
Prof: 263 to 44678, NumProf(t/r): 44415/17069	ppN(m/s)	-12.34	12.96	-0.12	4.15
ProcTime/Recs: 19:01:01-19:09:21/17069-34137	ppT(m/s)	-97.51	102.35	-0.98	32.78
MxACQtime: 33ms; DRate: 190.8KB/s; Flags: 0, 0, 0	hh/vv(dB)	-NaN	48.63	13.34	30.61 5337
Pulse: 275ns, IFfilt: 5.0MHz; ppPol: HH HV VV	vh/hh(dB)	-NaN	-32.76	-37.39	-37.43 99.1
TxPol: HHVV, PRF: 20 10 20 10 kHz	hv/vv(dB)	-NaN	-33.65	-54.77	-46.69 643.
Range: Delay 75m, Spacing 15m, Gates 100	hn/jmp(dB)	-2.51	1.98	-0.08	-8.57 14.2
Ave. Pulses: 84, Rng/Prof Aspect@90m/s: 5.7	vn/jmp(dB)	-2.43	2.13	-0.09	-8.60 14.1