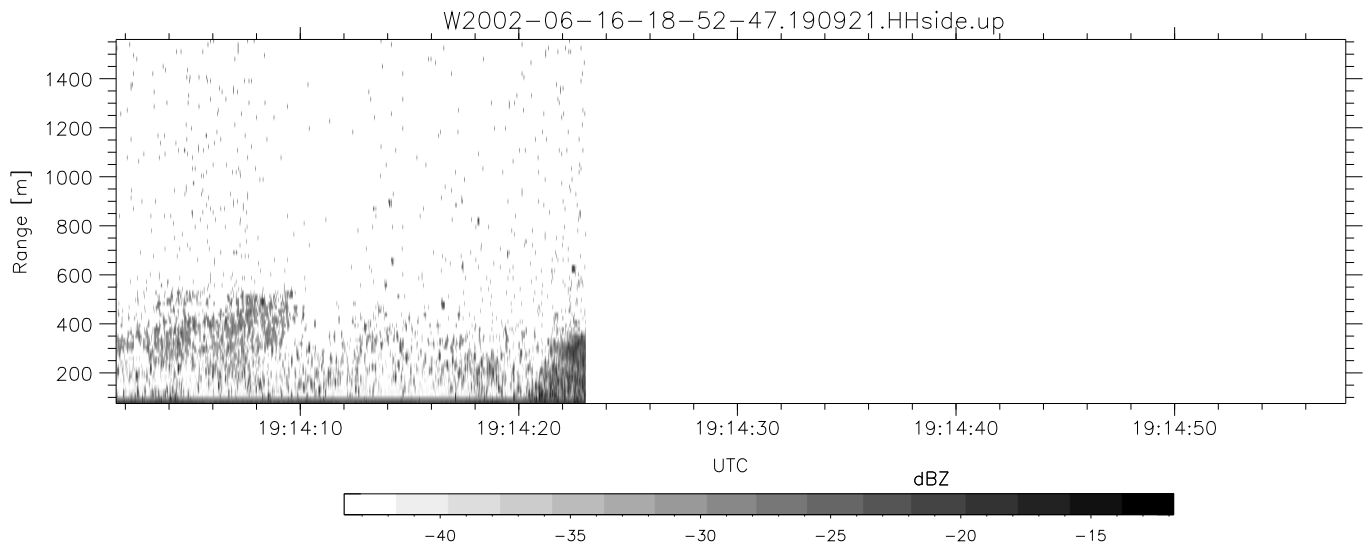
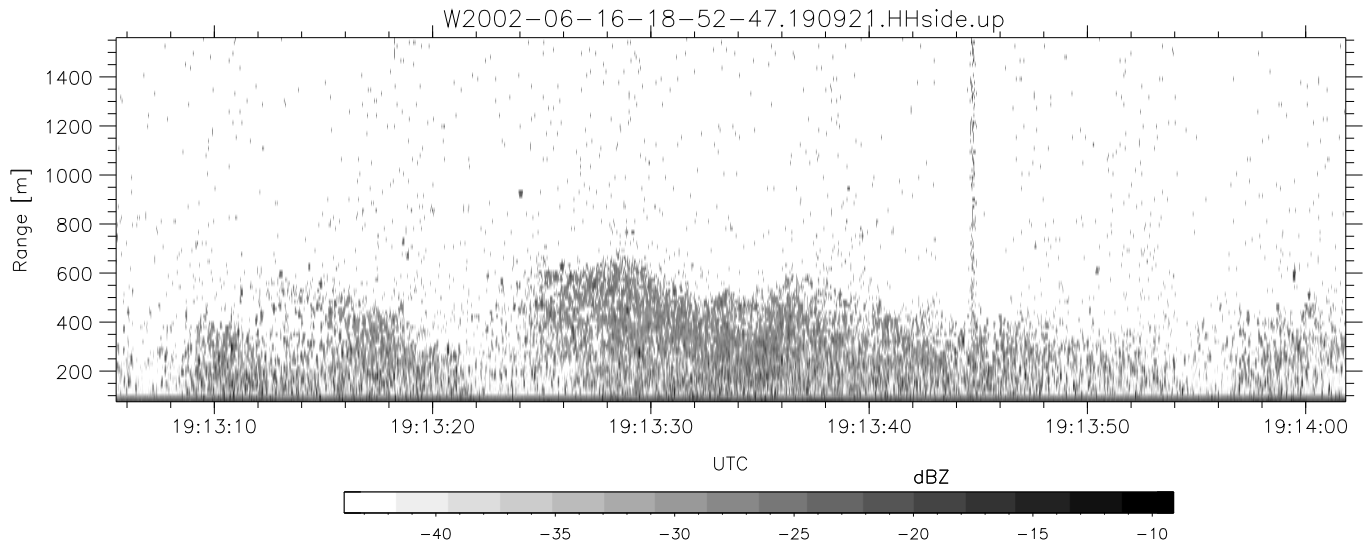
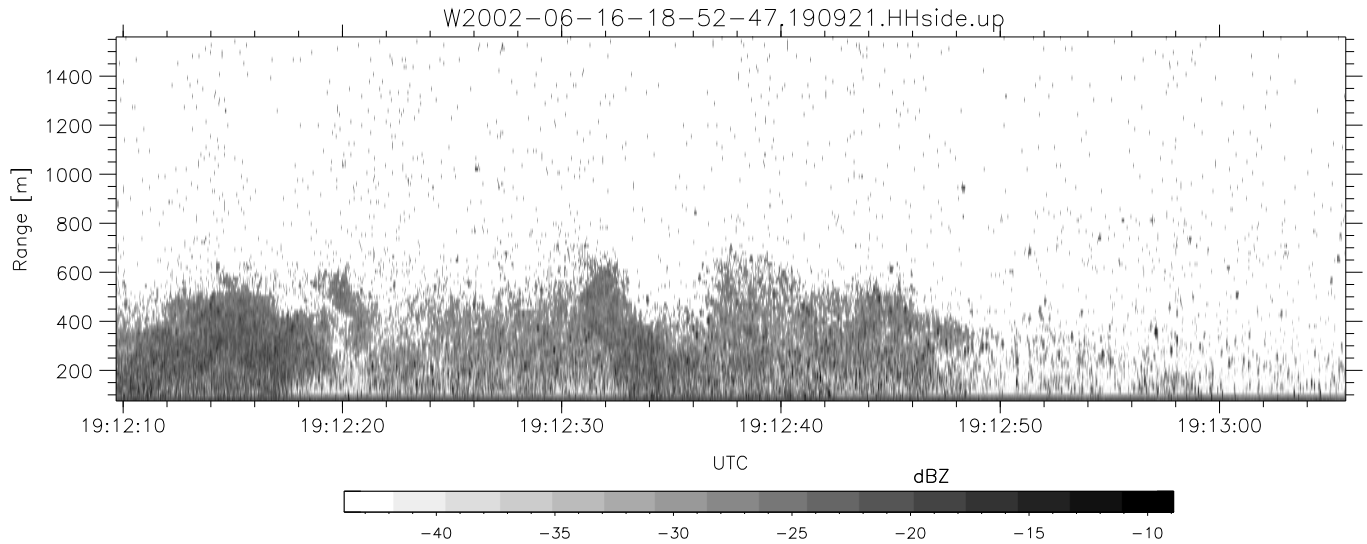


IHOP 2002 (dual-antenna config, modes 1,3,4,7) Data (cal: 49.0,50.0)

W2002-06-16-18-52-47 - PPMAG4
 IRIG:1,UTC: 18:52:39.91 to 19:14:23.05, Dur: 1304s
 TimeLngth: 1303.14s, TimeInt: 29ms (34.1pps)
 TimeCor=-13.0s, DSPDif(mn,min,mx):29,28,361
 PPS(min,max,std): 23,36,2.39
 Prof: 263 to 44678, NumProf(t/r): 44415/10277
 ProcTime/Recs: 19:09:21-19:14:23/34138-44414
 MxACQtime: 33ms; DRate: 190.8KB/s; Flags: 0, 0, 0
 Pulse: 275ns, IFfilt: 5.0MHz; ppPol: HH HV VV
 TxPol: HHVV, PRF: 20 10 20 10 kHz
 Range: Delay 75m, Spacing 15m, Gates 100
 Ave. Pulses: 84, Rng/Prof Aspect@90m/s: 5.7

	Min	Max	Mean	Std	Varc%
hhN(dB)	-68.41	-64.61	-66.12	-76.18	9.9
vvN(dB)	-68.16	-64.93	-66.42	-76.44	10.0
hhL(dB)	-7.77	-4.07	-5.84	-16.02	9.6
vvL(dB)	-4.83	-0.68	-3.13	-11.21	15.6
ppN(m/s)	-12.33	12.29	0.05	4.14	
ppT(m/s)	-97.40	97.07	0.37	32.68	
hh/vv(dB)	-NaN	54.11	15.32	32.55	5287
vh/hh(dB)	-NaN	-31.98	-36.25	-36.59	92.4
hv/vv(dB)	-NaN	-35.78	-55.33	-47.25	642.
hh_jmp(dB)	-2.27	2.46	0.14	-8.45	13.8
vv_jmp(dB)	-2.00	2.46	0.17	-8.27	14.3



IHOP 2002 (dual-antenna config, modes 1,3,4,7) Data (cal: 49.0,50.0)

	Min	Max	Mean	Std	Varc%
W2002-06-16-18-52-47 - PPMAG4					
IRIG:1,UTC: 18:52:39.91 to 19:14:23.05, Dur: 1304s					
TimeLngth: 1303.14s, TimeInt: 29ms (34.1pps)					
TimeCor=-13.0s, DSPDif(mn,min,mx):29,28,361					
PPS(min,max,std): 23,36,2.39					
Prof: 263 to 44678, NumProf(t/r): 44415/10277					
ProcTime/Recs: 19:09:21-19:14:23/34138-44414					
MxACQtime: 33ms; DRate: 190.8KB/s; Flags: 0, 0, 0					
Pulse: 275ns, IFilt: 5.0MHz; ppPol: HH HV VV					
TxPol: HHVV, PRF: 20 10 20 10 kHz					
Range: Delay 75m, Spacing 15m, Gates 100					
Ave. Pulses: 84, Rng/Prof Aspect@90m/s: 5.7					
hhN(dB)	-68.41	-64.61	-66.12	-76.18	9.9
vvN(dB)	-68.16	-64.93	-66.42	-76.44	10.0
hhL(dB)	-7.77	-4.07	-5.84	-16.02	9.6
vvL(dB)	-4.83	-0.68	-3.13	-11.21	15.6
ppN(m/s)	-12.33	12.29	0.05	4.14	
ppT(m/s)	-97.40	97.07	0.37	32.68	
hh/vv(dB)	-NaN	54.11	15.32	32.55	5287
vh/hh(dB)	-NaN	-31.98	-36.25	-36.59	92.4
hv/vv(dB)	-NaN	-35.78	-55.33	-47.25	642.
hnjmp(dB)	-2.27	2.46	0.14	-8.45	13.8
vnjmp(dB)	-2.00	2.46	0.17	-8.27	14.3