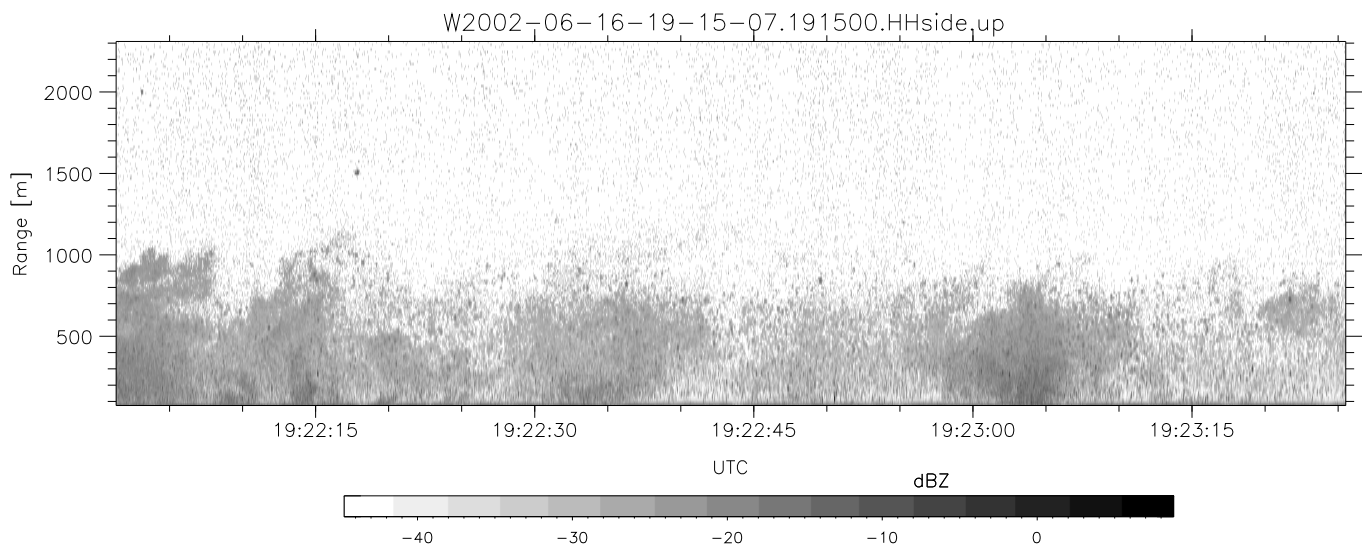
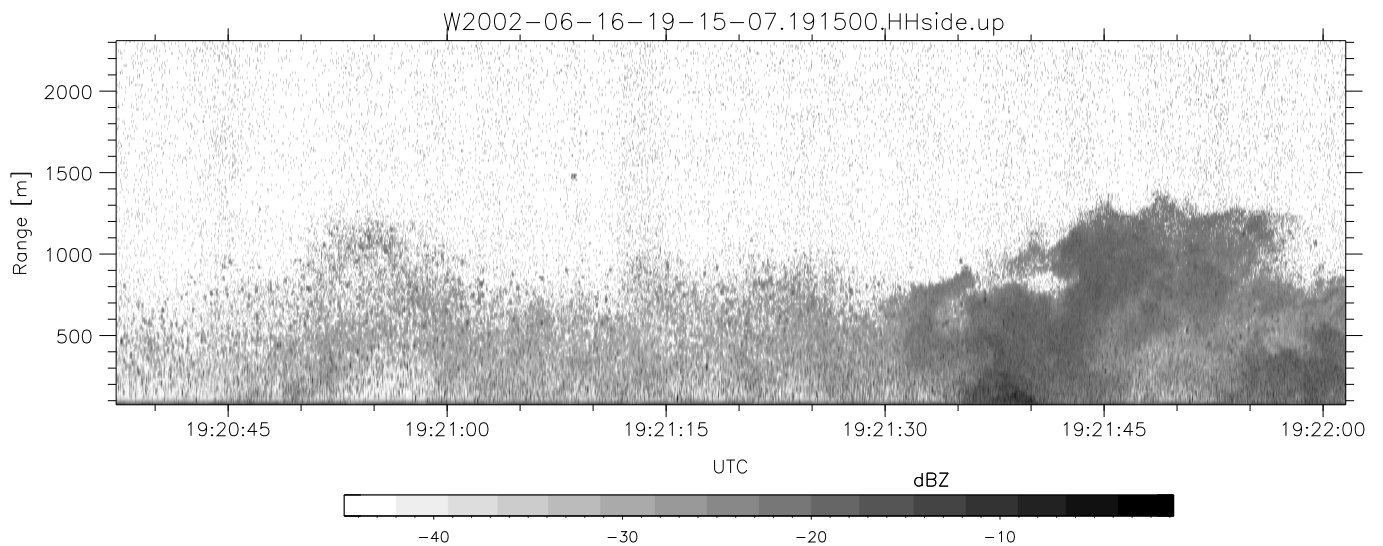
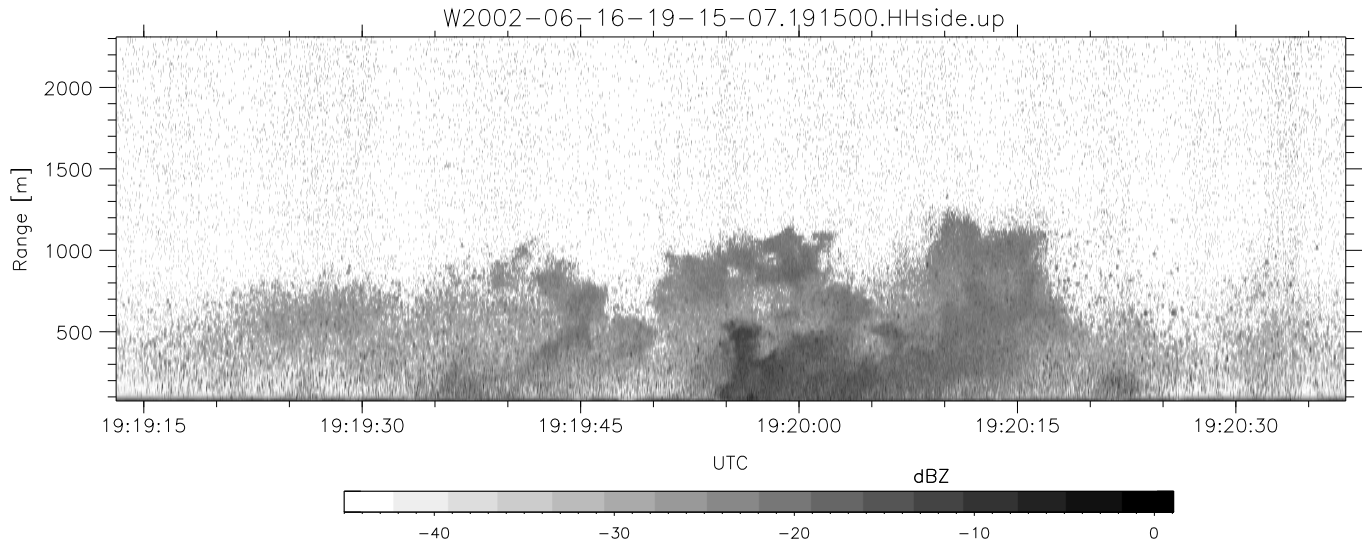


IHOP 2002 (dual-antenna config, modes 1,3,4,7) Data (cal: 49.0,50.0)

W2002-06-16-19-15-07 - SPPMAG
 IRIG:1,UTC: 19:15:00.64 to 19:39:25.38, Dur: 1465s
 TimeLngth: 1464.74s, TimeInt: 24ms (40.7pps)
 TimeCor=-13.0s, DSPDif(mn,min,mx):24,20,371
 PPS(min,max,std): 30,42,2.39
 Prof: 413 to 59970, NumProf(t/r): 59557/30122
 ProcTime/Recs: 19:15:00-19:27:20/0-30121
 MxACQtime: 17ms; DRate: 97.4KB/s; Flags: 0, 0, 0
 Pulse: 275ns, IFfilt: 5.0MHz; ppPol: HH
 TxPol: H, PRF: 20 kHz
 Range: Delay 75m, Spacing 15m, Gates 150
 Ave. Pulses: 348, Rng/Prof Aspect@90m/s: 6.8

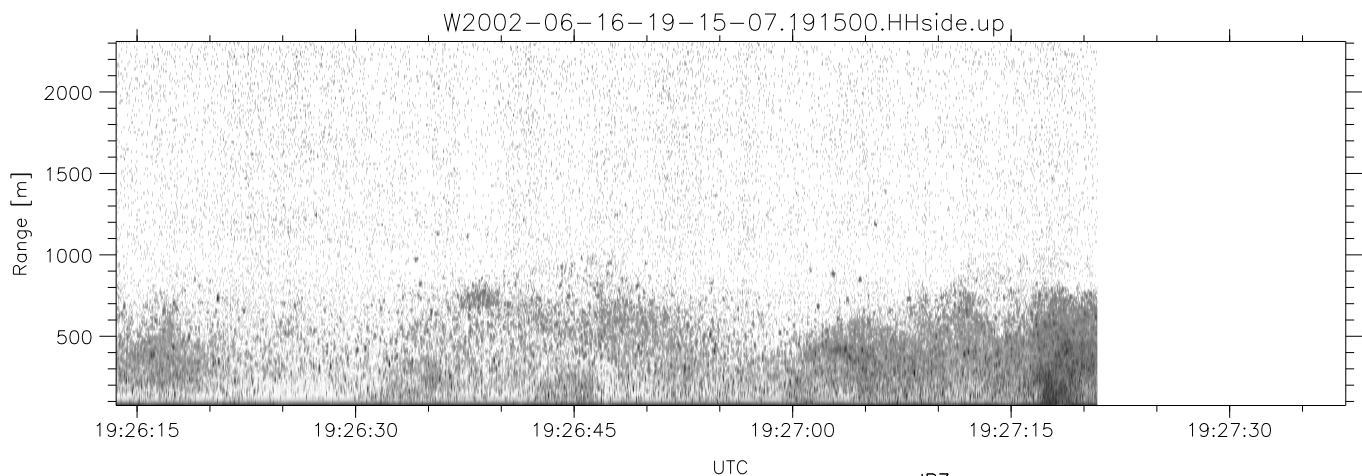
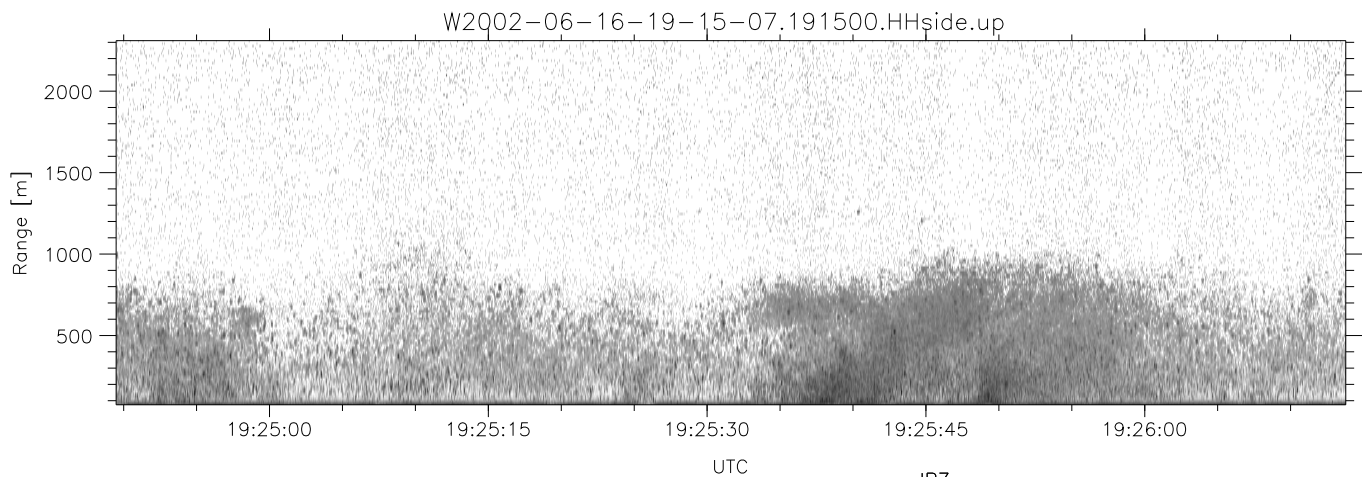
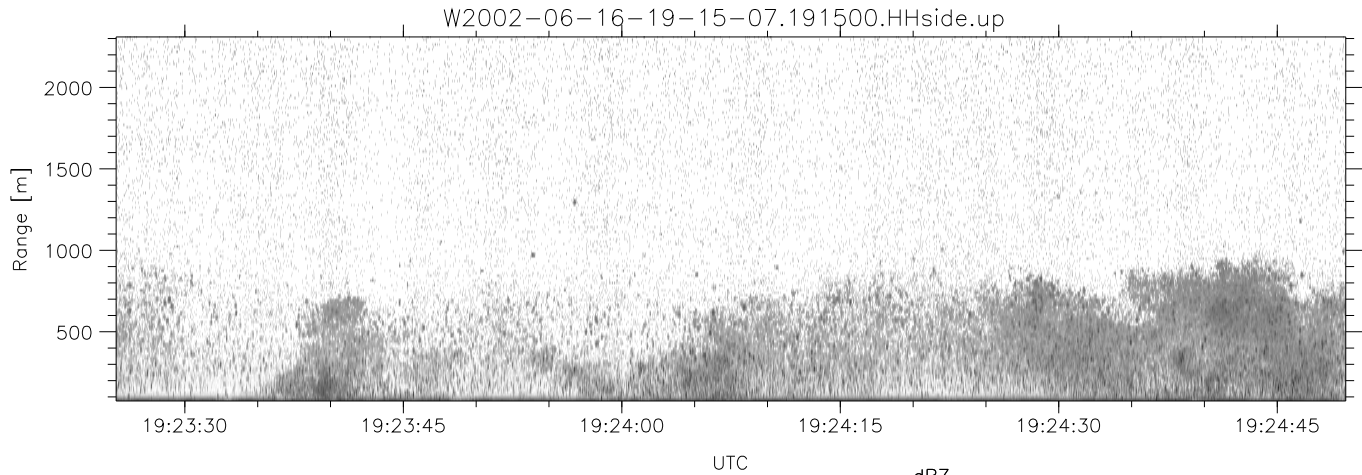
	Min	Max	Mean	Std	Varc%
hhN(dB)	-67.04	-65.29	-66.07	-79.07	5.0
vvN(dB)	-67.34	-65.60	-66.43	-79.35	5.1
hhL(dB)	-14.98	-2.24	-4.68	-9.52	32.8
vhL(dB)	-25.73	-3.71	-6.35	-10.67	37.0
ppN(m/s)	-15.80	15.80	-0.05	9.10	
ppT(m/s)	-0.05	0.02	-0.00	0.01	
vh/hh(dB)	-NaN	-6.29	-23.94	-17.74	416.
hn_jmp(dB)	-0.98	1.31	0.13	-11.57	6.8
vn_jmp(dB)	-1.05	1.28	0.14	-11.44	6.9



IHOP 2002 (dual-antenna config, modes 1,3,4,7) Data (cal: 49.0,50.0)

W2002-06-16-19-15-07 - SPPMAG
 IRIG:1,UTC: 19:15:00.64 to 19:39:25.38, Dur: 1465s
 TimeLngth: 1464.74s, TimeInt: 24ms (40.7pps)
 TimeCor=-13.0s, DSPDif(mn,min,mx):24,20,371
 PPS(min,max,std): 30,42,2.39
 Prof: 413 to 59970, NumProf(t/r): 59557/30122
 ProcTime/Recs: 19:15:00-19:27:20/0-30121
 MxACQtime: 17ms; DRate: 97.4KB/s; Flags: 0, 0, 0
 Pulse: 275ns, IFfilt: 5.0MHz; ppPol: HH
 TxPol: H, PRF: 20 kHz
 Range: Delay 75m, Spacing 15m, Gates 150
 Ave. Pulses: 348, Rng/Prof Aspect@90m/s: 6.8

	Min	Max	Mean	Std	Varc%
hhN(dB)	-67.04	-65.29	-66.07	-79.07	5.0
vvN(dB)	-67.34	-65.60	-66.43	-79.35	5.1
hhL(dB)	-14.98	-2.24	-4.68	-9.52	32.8
vhL(dB)	-25.73	-3.71	-6.35	-10.67	37.0
ppN(m/s)	-15.80	15.80	-0.05	9.10	
ppT(m/s)	-0.05	0.02	-0.00	0.01	
vh/hh(dB)	-NaN	-6.29	-23.94	-17.74	416.
hn_jmp(dB)	-0.98	1.31	0.13	-11.57	6.8
vn_jmp(dB)	-1.05	1.28	0.14	-11.44	6.9



IHOP 2002 (dual-antenna config, modes 1,3,4,7) Data (cal: 49.0,50.0)

W2002-06-16-19-15-07 - SPPMAG
 IRIG:1,UTC: 19:15:00.64 to 19:39:25.38, Dur: 1465s
 TimeLngth: 1464.74s, TimeInt: 24ms (40.7pps)
 TimeCor=-13.0s, DSPDif(mn,min,mx):24,20,371
 PPS(min,max,std): 30,42,2.39
 Prof: 413 to 59970, NumProf(t/r): 59557/30122
 ProcTime/Recs: 19:15:00-19:27:20/0-30121
 MxACQtime: 17ms; DRate: 97.4KB/s; Flags: 0, 0, 0
 Pulse: 275ns, IFfilt: 5.0MHz; ppPol: HH
 TxPol: H, PRF: 20 kHz
 Range: Delay 75m, Spacing 15m, Gates 150
 Ave. Pulses: 348, Rng/Prof Aspect@90m/s: 6.8

	Min	Max	Mean	Std	Varc%
hhN(dB)	-67.04	-65.29	-66.07	-79.07	5.0
vvN(dB)	-67.34	-65.60	-66.43	-79.35	5.1
hhL(dB)	-14.98	-2.24	-4.68	-9.52	32.8
vhL(dB)	-25.73	-3.71	-6.35	-10.67	37.0
ppN(m/s)	-15.80	15.80	-0.05	9.10	
ppT(m/s)	-0.05	0.02	-0.00	0.01	
vh/hh(dB)	-NaN	-6.29	-23.94	-17.74	416.
hnjmp(dB)	-0.98	1.31	0.13	-11.57	6.8
vnjmp(dB)	-1.05	1.28	0.14	-11.44	6.9