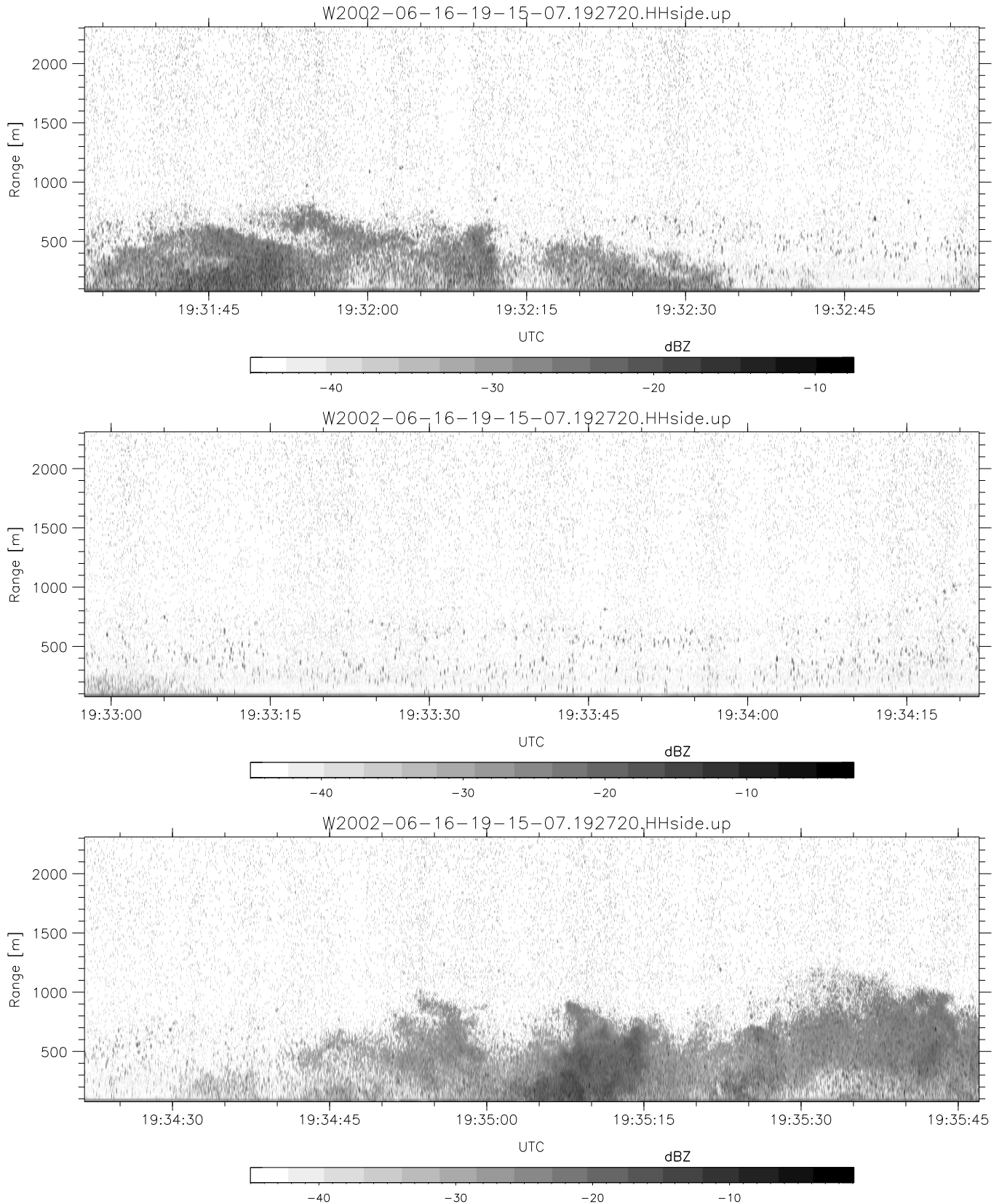


IHOP 2002 (dual-antenna config, modes 1,3,4,7) Data (cal: 49.0,50.0)

W2002-06-16-19-15-07 - SPPMAG  
 IRIG:1,UTC: 19:15:00.64 to 19:39:25.38, Dur: 1465s  
 TimeLngth: 1464.74s, TimeInt: 24ms (40.7pps)  
 TimeCor=-13.0s, DSPDif(mn,min,mx):24,20,353  
 PPS(min,max,std): 24,42,2.61  
 Prof: 413 to 59970, NumProf(t/r): 59557/29435  
 ProcTime/Recs: 19:27:20-19:39:25/30122-59556  
 MxACQtime: 17ms; DRate: 97.4KB/s; Flags: 0, 0, 0  
 Pulse: 275ns, IFfilt: 5.0MHz; ppPol: HH  
 TxPol: H, PRF: 20 kHz  
 Range: Delay 75m, Spacing 15m, Gates 150  
 Ave. Pulses: 348, Rng/Prof Aspect@90m/s: 6.8

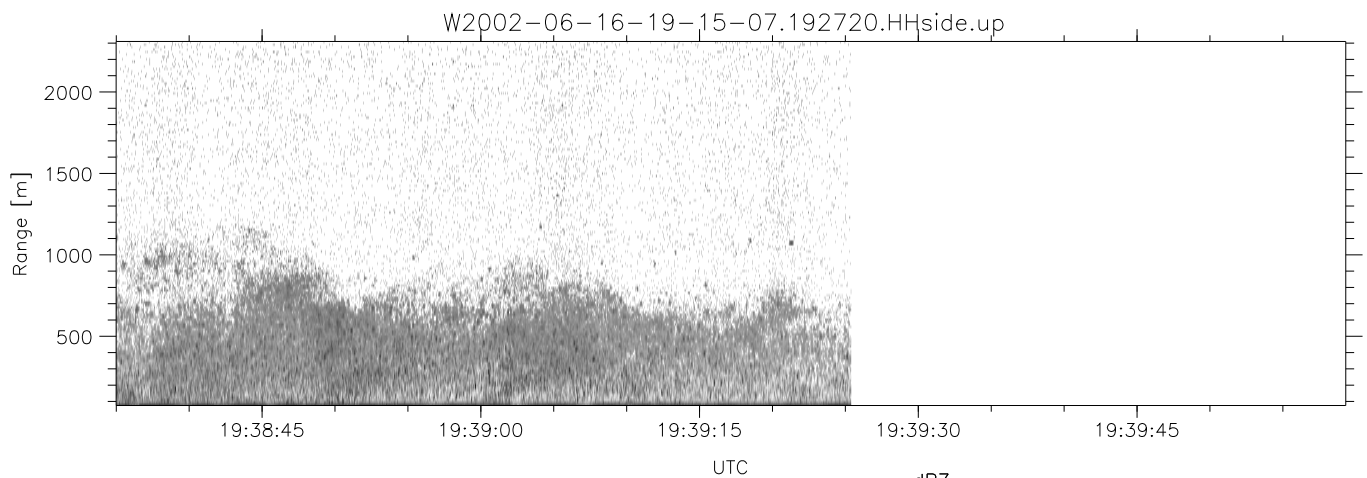
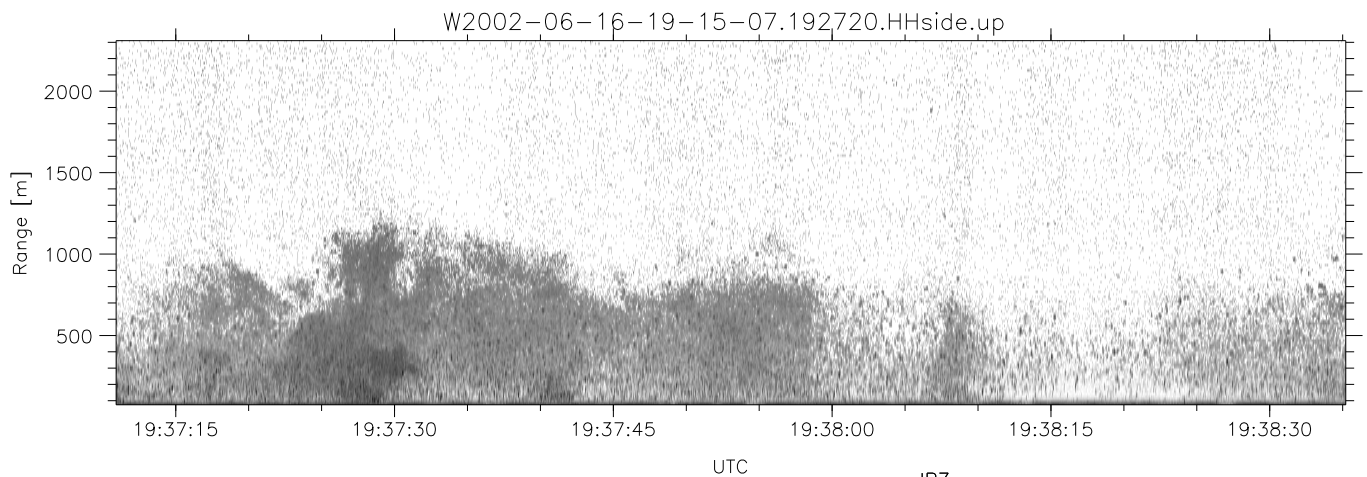
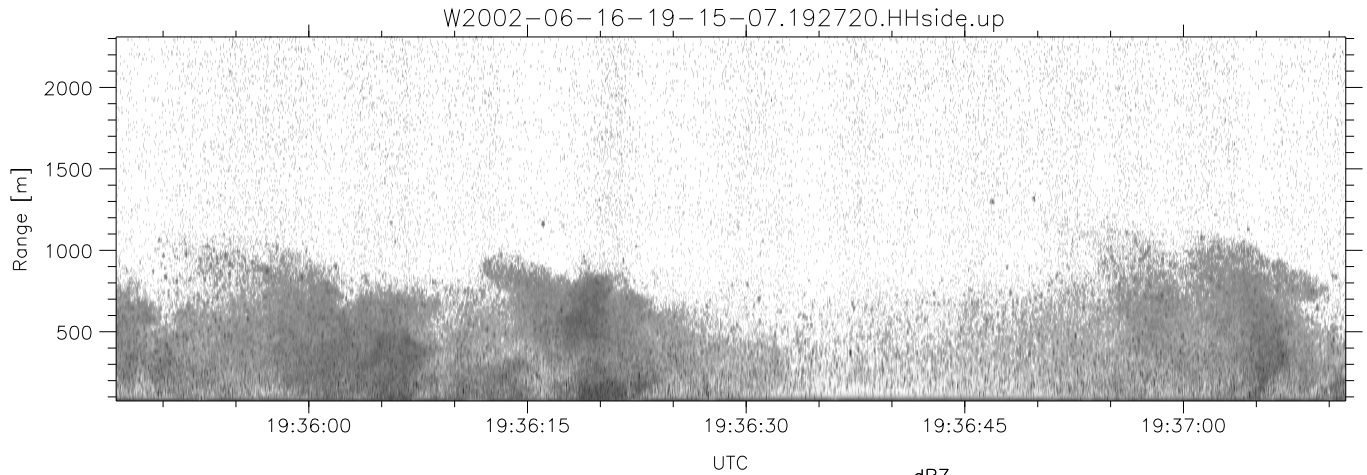
	Min	Max	Mean	Std	Varc%
hhN(dB)	-66.96	-65.15	-66.10	-79.10	5.0
vvN(dB)	-67.46	-65.62	-66.44	-79.35	5.1
hhL(dB)	-15.85	-2.52	-5.22	-9.75	35.3
vhL(dB)	-25.07	-4.32	-7.73	-10.23	56.2
ppN(m/s)	-15.80	15.80	-0.06	9.04	
ppT(m/s)	-0.07	0.02	-0.00	0.01	
vh/hh(dB)	-NaN	-1.47	-20.42	-12.05	687.
hnjmp(dB)	-1.43	1.25	0.12	-11.54	6.8
vnjmp(dB)	-1.08	1.54	0.14	-11.43	7.0



IHOP 2002 (dual-antenna config, modes 1,3,4,7) Data (cal: 49.0,50.0)

W2002-06-16-19-15-07 - SPPMAG  
 IRIG:1,UTC: 19:15:00.64 to 19:39:25.38, Dur: 1465s  
 TimeLngth: 1464.74s, TimeInt: 24ms (40.7pps)  
 TimeCor=-13.0s, DSPDif(mn,min,mx):24,20,353  
 PPS(min,max,std): 24,42,2.61  
 Prof: 413 to 59970, NumProf(t/r): 59557/29435  
 ProcTime/Recs: 19:27:20-19:39:25/30122-59556  
 MxACQtime: 17ms; DRate: 97.4KB/s; Flags: 0, 0, 0  
 Pulse: 275ns, IFfilt: 5.0MHz; ppPol: HH  
 TxPol: H, PRF: 20 kHz  
 Range: Delay 75m, Spacing 15m, Gates 150  
 Ave. Pulses: 348, Rng/Prof Aspect@90m/s: 6.8

	Min	Max	Mean	Std	Varc%
hhN(dB)	-66.96	-65.15	-66.10	-79.10	5.0
vvN(dB)	-67.46	-65.62	-66.44	-79.35	5.1
hhL(dB)	-15.85	-2.52	-5.22	-9.75	35.3
vhL(dB)	-25.07	-4.32	-7.73	-10.23	56.2
ppN(m/s)	-15.80	15.80	-0.06	9.04	
ppT(m/s)	-0.07	0.02	-0.00	0.01	
vh/hh(dB)	-NaN	-1.47	-20.42	-12.05	687.
hnjmp(dB)	-1.43	1.25	0.12	-11.54	6.8
vnjmp(dB)	-1.08	1.54	0.14	-11.43	7.0



IHOP 2002 (dual-antenna config, modes 1,3,4,7) Data (cal: 49.0,50.0)

W2002-06-16-19-15-07 - SPPMAG  
 IRIG:1,UTC: 19:15:00.64 to 19:39:25.38, Dur: 1465s  
 TimeLngth: 1464.74s, TimeInt: 24ms (40.7pps)  
 TimeCor=-13.0s, DSPDif(mn,min,mx):24,20,353  
 PPS(min,max,std): 24,42,2.61  
 Prof: 413 to 59970, NumProf(t/r): 59557/29435  
 ProcTime/Recs: 19:27:20-19:39:25/30122-59556  
 MxACQtime: 17ms; DRate: 97.4KB/s; Flags: 0, 0, 0  
 Pulse: 275ns, IFfilt: 5.0MHz; ppPol: HH  
 TxPol: H, PRF: 20 kHz  
 Range: Delay 75m, Spacing 15m, Gates 150  
 Ave. Pulses: 348, Rng/Prof Aspect@90m/s: 6.8

	Min	Max	Mean	Std	Varc%
hhN(dB)	-66.96	-65.15	-66.10	-79.10	5.0
vvN(dB)	-67.46	-65.62	-66.44	-79.35	5.1
hhL(dB)	-15.85	-2.52	-5.22	-9.75	35.3
vhL(dB)	-25.07	-4.32	-7.73	-10.23	56.2
ppN(m/s)	-15.80	15.80	-0.06	9.04	
ppT(m/s)	-0.07	0.02	-0.00	0.01	
vh/hh(dB)	-NaN	-1.47	-20.42	-12.05	687.
hn_jmp(dB)	-1.43	1.25	0.12	-11.54	6.8
vn_jmp(dB)	-1.08	1.54	0.14	-11.43	7.0