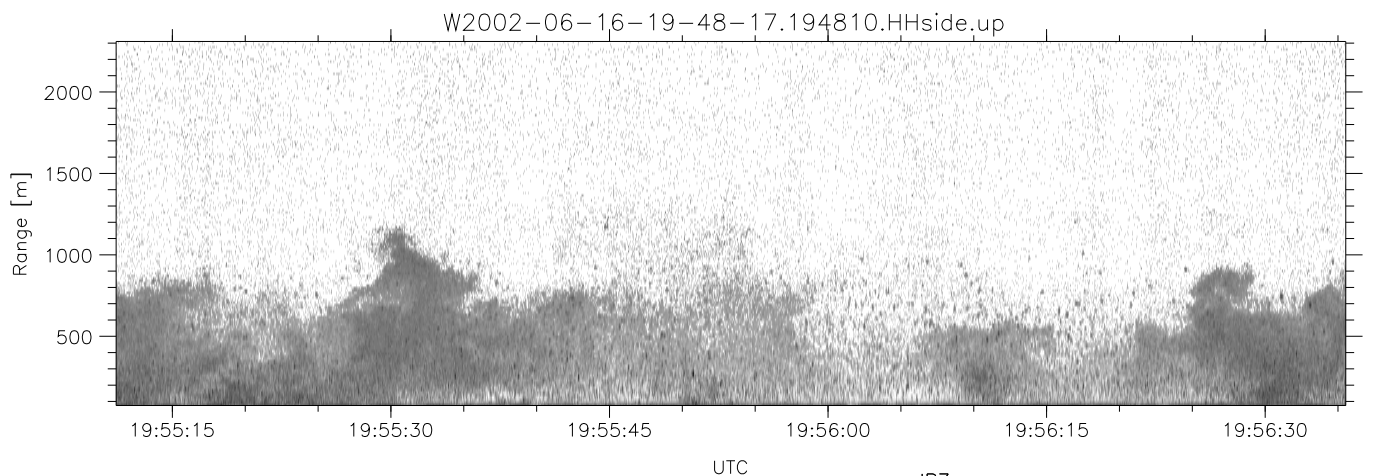
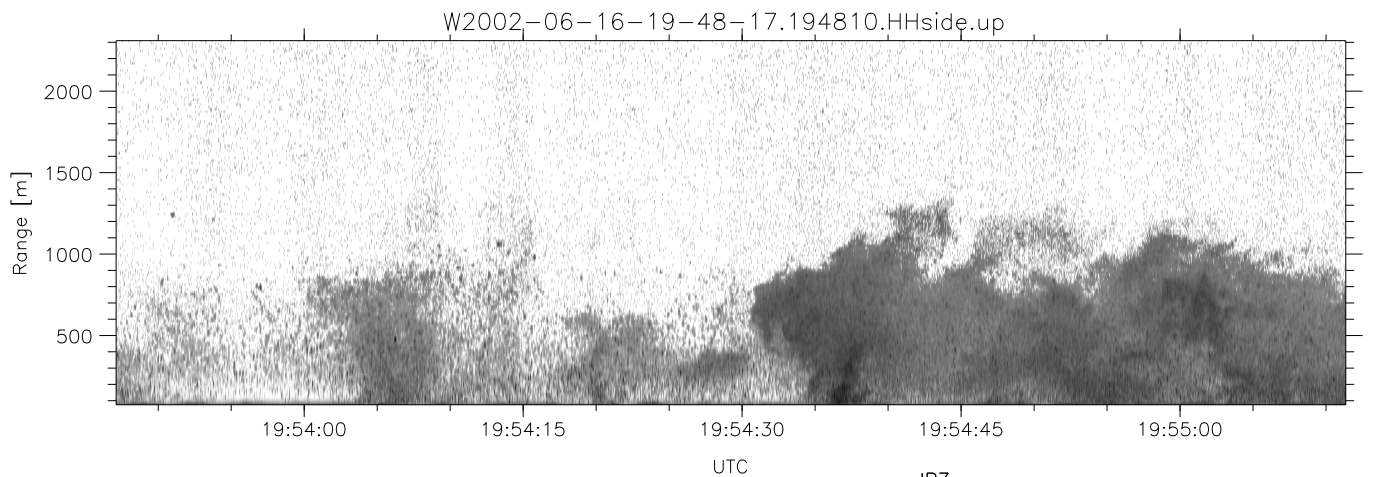
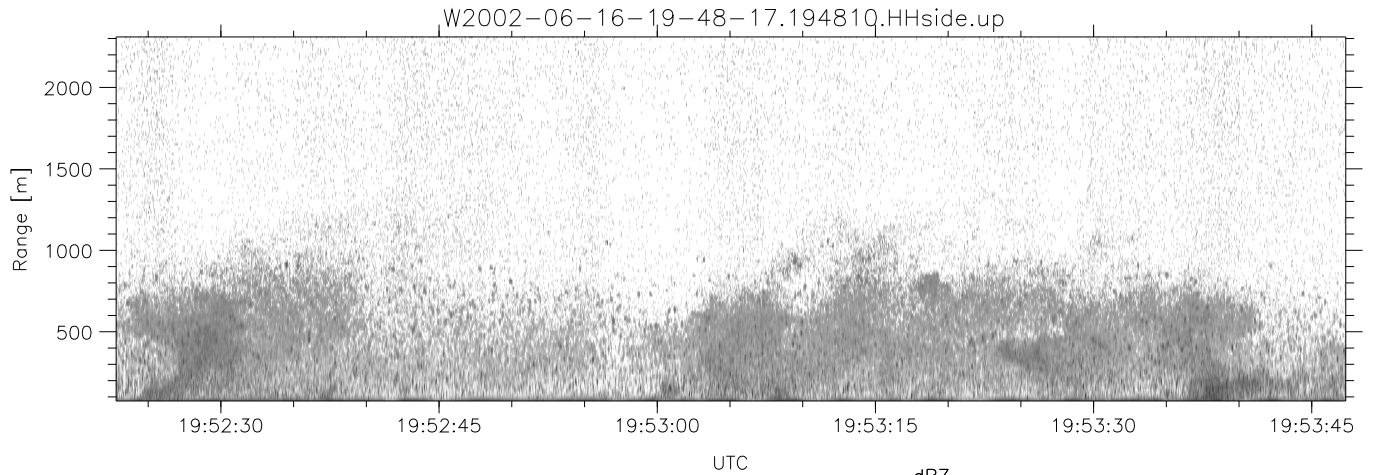


IHOP 2002 (dual-antenna config, modes 1,3,4,7) Data (cal: 49.0,50.0)

W2002-06-16-19-48-17 - SPPMAG
 IRIG:1,UTC: 19:48:10.20 to 20:05:16.94, Dur: 1026s
 TimeLngth: 1026.75s, TimeInt: 24ms (40.7pps)
 TimeCor=-13.0s, DSPDif(mn,min,mx):24,20,532
 PPS(min,max,std): 20,42,2.61
 Prof: 16242 to 58012, NumProf(t/r): 41770/30122
 ProcTime/Recs: 19:48:10-20:00:30/0-30121
 MxACQtime: 17ms; DRate: 97.4KB/s; Flags: 0, 0, 0
 Pulse: 275ns, IFfilt: 5.0MHz; ppPol: HH
 TxPol: H, PRF: 20 kHz
 Range: Delay 75m, Spacing 15m, Gates 150
 Ave. Pulses: 348, Rng/Prof Aspect@90m/s: 6.8

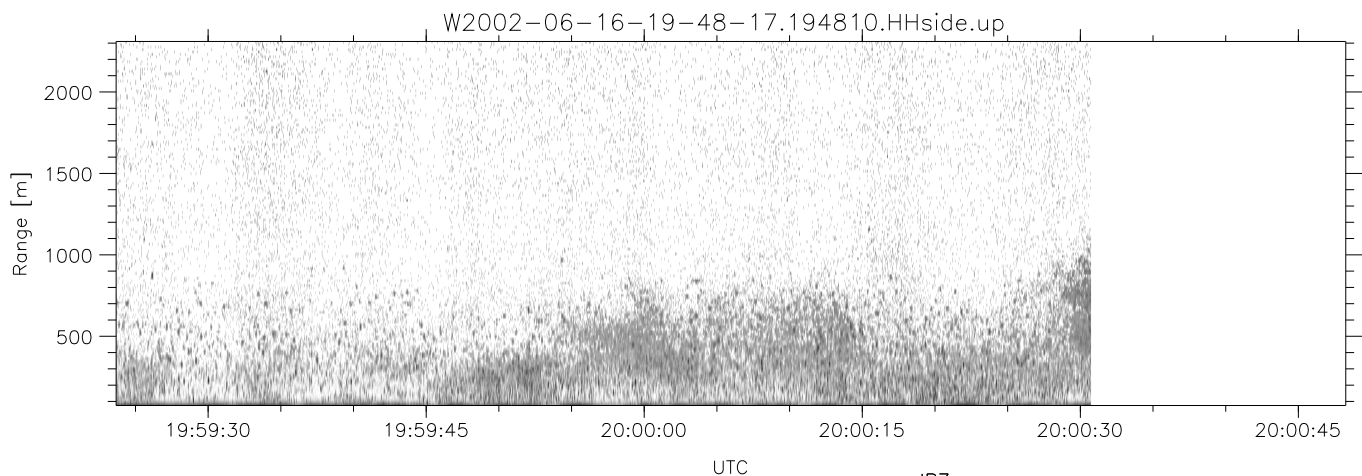
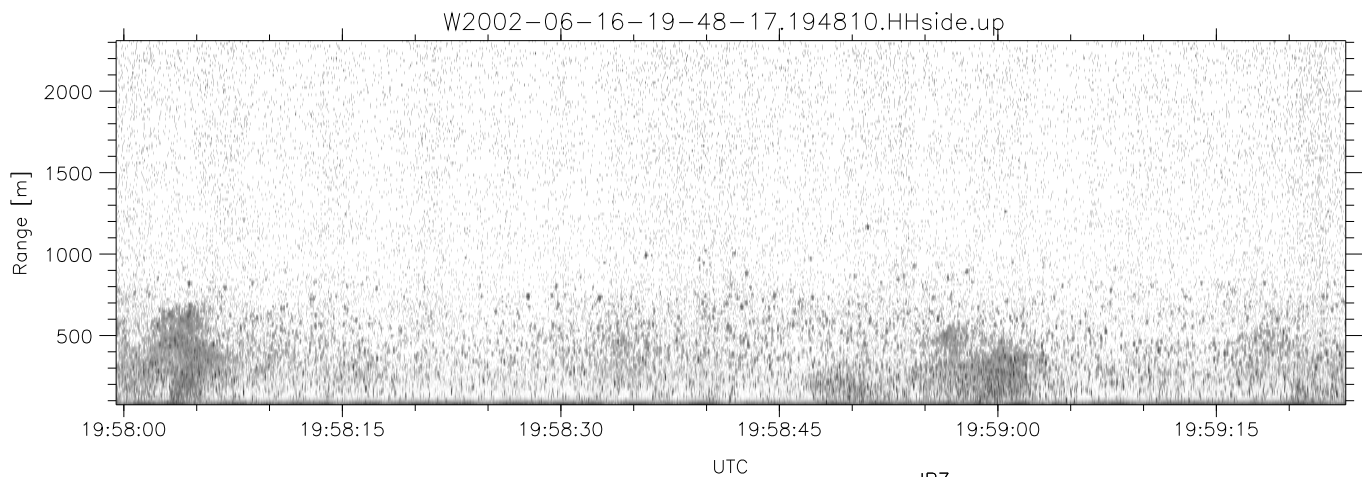
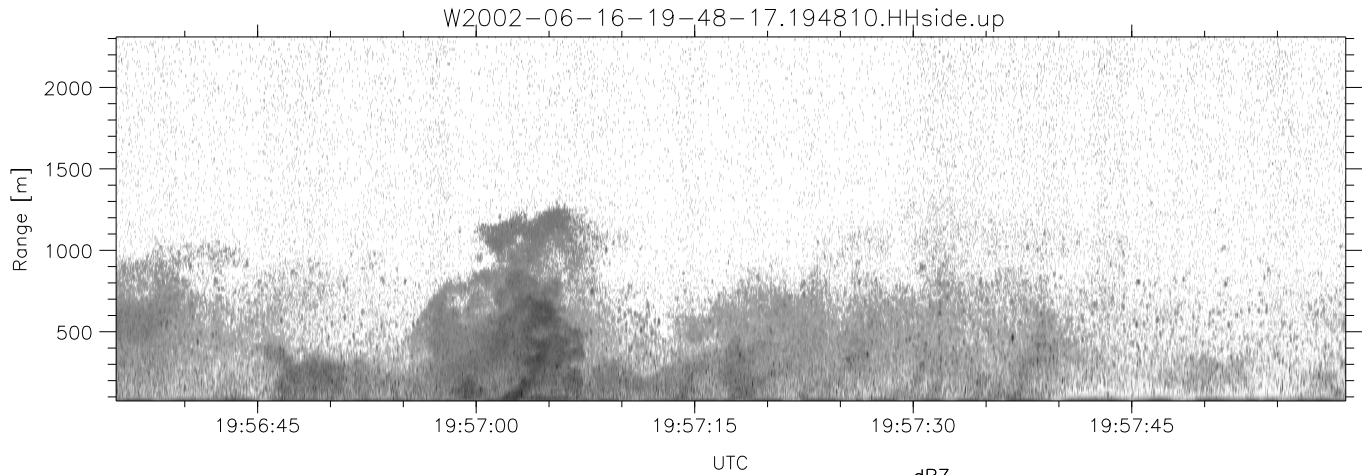
	Min	Max	Mean	Std	Varc%
hhN(dB)	-67.05	-65.26	-66.15	-79.11	5.1
vvN(dB)	-67.44	-65.67	-66.49	-79.40	5.1
hhL(dB)	-18.75	-3.03	-7.64	-9.73	61.8
vhL(dB)	-25.27	-5.07	-10.12	-11.68	69.8
ppN(m/s)	-15.80	15.80	0.03	9.00	
ppT(m/s)	-0.11	0.04	-0.01	0.01	
vh/hh(dB)	-NaN	-4.26	-20.68	-13.66	502.
hnjmp(dB)	-1.41	1.07	-0.11	-11.74	6.9
vnjmp(dB)	-1.20	1.02	-0.12	-11.70	6.9



IHOP 2002 (dual-antenna config, modes 1,3,4,7) Data (cal: 49.0,50.0)

W2002-06-16-19-48-17 - SPPMAG
 IRIG:1,UTC: 19:48:10.20 to 20:05:16.94, Dur: 1026s
 TimeLngth: 1026.75s, TimeInt: 24ms (40.7pps)
 TimeCor=-13.0s, DSPDif(mn,min,mx):24,20,532
 PPS(min,max,std): 20,42,2.61
 Prof: 16242 to 58012, NumProf(t/r): 41770/30122
 ProcTime/Recs: 19:48:10-20:00:30/0-30121
 MxACQtime: 17ms; DRate: 97.4KB/s; Flags: 0, 0, 0
 Pulse: 275ns, IFfilt: 5.0MHz; ppPol: HH
 TxPol: H, PRF: 20 kHz
 Range: Delay 75m, Spacing 15m, Gates 150
 Ave. Pulses: 348, Rng/Prof Aspect@90m/s: 6.8

	Min	Max	Mean	Std	Varc%
hhN(dB)	-67.05	-65.26	-66.15	-79.11	5.1
vvN(dB)	-67.44	-65.67	-66.49	-79.40	5.1
hhL(dB)	-18.75	-3.03	-7.64	-9.73	61.8
vhL(dB)	-25.27	-5.07	-10.12	-11.68	69.8
ppN(m/s)	-15.80	15.80	0.03	9.00	
ppT(m/s)	-0.11	0.04	-0.01	0.01	
vh/hh(dB)	-NaN	-4.26	-20.68	-13.66	502.
hnjmp(dB)	-1.41	1.07	-0.11	-11.74	6.9
vnjmp(dB)	-1.20	1.02	-0.12	-11.70	6.9



IHOP 2002 (dual-antenna config, modes 1,3,4,7) Data (cal: 49.0,50.0)

W2002-06-16-19-48-17 - SPPMAG
 IRIG:1,UTC: 19:48:10.20 to 20:05:16.94, Dur: 1026s
 TimeLngth: 1026.75s, TimeInt: 24ms (40.7pps)
 TimeCor=-13.0s, DSPDif(mn,min,mx):24,20,532
 PPS(min,max,std): 20,42,2.61
 Prof: 16242 to 58012, NumProf(t/r): 41770/30122
 ProcTime/Recs: 19:48:10-20:00:30/0-30121
 MxACQtime: 17ms; DRate: 97.4KB/s; Flags: 0, 0, 0
 Pulse: 275ns, IFfilt: 5.0MHz; ppPol: HH
 TxPol: H, PRF: 20 kHz
 Range: Delay 75m, Spacing 15m, Gates 150
 Ave. Pulses: 348, Rng/Prof Aspect@90m/s: 6.8

	Min	Max	Mean	Std	Varc%
hhN(dB)	-67.05	-65.26	-66.15	-79.11	5.1
vvN(dB)	-67.44	-65.67	-66.49	-79.40	5.1
hhL(dB)	-18.75	-3.03	-7.64	-9.73	61.8
vhL(dB)	-25.27	-5.07	-10.12	-11.68	69.8
ppN(m/s)	-15.80	15.80	0.03	9.00	
ppT(m/s)	-0.11	0.04	-0.01	0.01	
vh/hh(dB)	-NaN	-4.26	-20.68	-13.66	502.
hnjmp(dB)	-1.41	1.07	-0.11	-11.74	6.9
vnjmp(dB)	-1.20	1.02	-0.12	-11.70	6.9