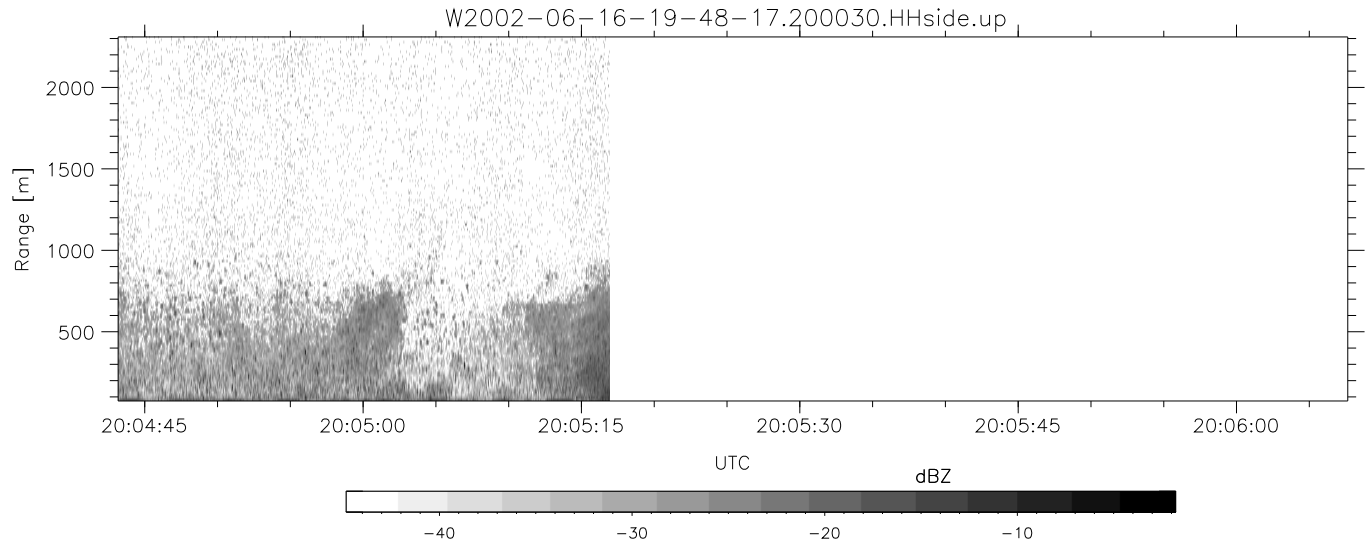


IHOP 2002 (dual-antenna config, modes 1,3,4,7) Data (cal: 49.0,50.0)

W2002-06-16-19-48-17 - SPPMAG  
 IRIG:1,UTC: 19:48:10.20 to 20:05:16.94, Dur: 1026s  
 TimeLngth: 1026.75s, TimeInt: 24ms (40.7pps)  
 TimeCor=-13.0s, DSPDif(mn,min,mx):24,20,213  
 PPS(min,max,std): 30,42,2.46  
 Prof: 16242 to 58012, NumProf(t/r): 41770/11648  
 ProcTime/Recs: 20:00:30-20:05:16/30122-41769  
 MxACQtime: 17ms; DRate: 97.4KB/s; Flags: 0, 0, 0  
 Pulse: 275ns, IFfilt: 5.0MHz; ppPol: HH  
 TxPol: H, PRF: 20 kHz  
 Range: Delay 75m, Spacing 15m, Gates 150  
 Ave. Pulses: 348, Rng/Prof Aspect@90m/s: 6.8

	Min	Max	Mean	Std	Varc%
hhN(dB)	-67.07	-65.42	-66.19	-79.19	5.0
vvN(dB)	-67.39	-65.71	-66.52	-79.41	5.2
hhL(dB)	-19.50	-3.65	-9.19	-10.30	77.6
vhL(dB)	-25.01	-5.71	-11.57	-12.29	84.7
ppN(m/s)	-15.79	15.80	0.11	9.05	
ppT(m/s)	-0.09	0.03	-0.01	0.01	
vh/hh(dB)	-47.83	-15.23	-24.60	-22.11	177.
hnjmp(dB)	-1.25	1.00	-0.11	-11.77	6.8
vnjmp(dB)	-1.16	0.88	-0.12	-11.69	7.0



IHOP 2002 (dual-antenna config, modes 1,3,4,7) Data (cal: 49.0,50.0)

W2002-06-16-19-48-17 - SPPMAG  
 IRIG:1,UTC: 19:48:10.20 to 20:05:16.94, Dur: 1026s  
 TimeLngth: 1026.75s, TimeInt: 24ms (40.7pps)  
 TimeCor=-13.0s, DSPDif(mn,min,mx):24,20,213  
 PPS(min,max,std): 30,42,2.46  
 Prof: 16242 to 58012, NumProf(t/r): 41770/11648  
 ProcTime/Recs: 20:00:30-20:05:16/30122-41769  
 MxACQtime: 17ms; DRate: 97.4KB/s; Flags: 0, 0, 0  
 Pulse: 275ns, IFfilt: 5.0MHz; ppPol: HH  
 TxPol: H, PRF: 20 kHz  
 Range: Delay 75m, Spacing 15m, Gates 150  
 Ave. Pulses: 348, Rng/Prof Aspect@90m/s: 6.8

	Min	Max	Mean	Std	Varc%
hhN(dB)	-67.07	-65.42	-66.19	-79.19	5.0
vvN(dB)	-67.39	-65.71	-66.52	-79.41	5.2
hhL(dB)	-19.50	-3.65	-9.19	-10.30	77.6
vhL(dB)	-25.01	-5.71	-11.57	-12.29	84.7
ppN(m/s)	-15.79	15.80	0.11	9.05	
ppT(m/s)	-0.09	0.03	-0.01	0.01	
vh/hh(dB)	-47.83	-15.23	-24.60	-22.11	177.
hnjmp(dB)	-1.25	1.00	-0.11	-11.77	6.8
vnjmp(dB)	-1.16	0.88	-0.12	-11.69	7.0