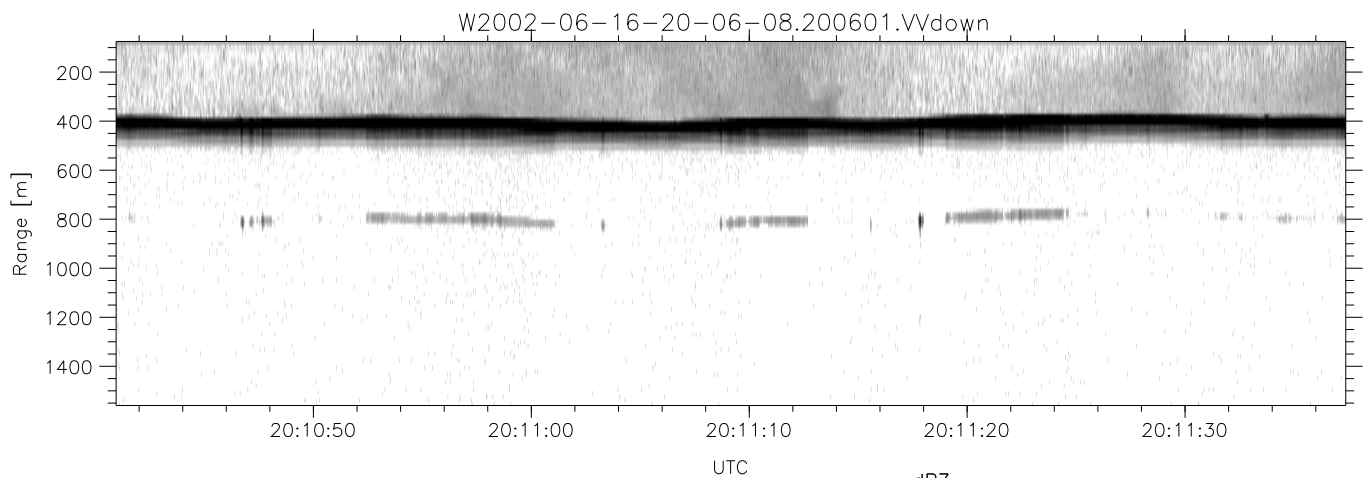
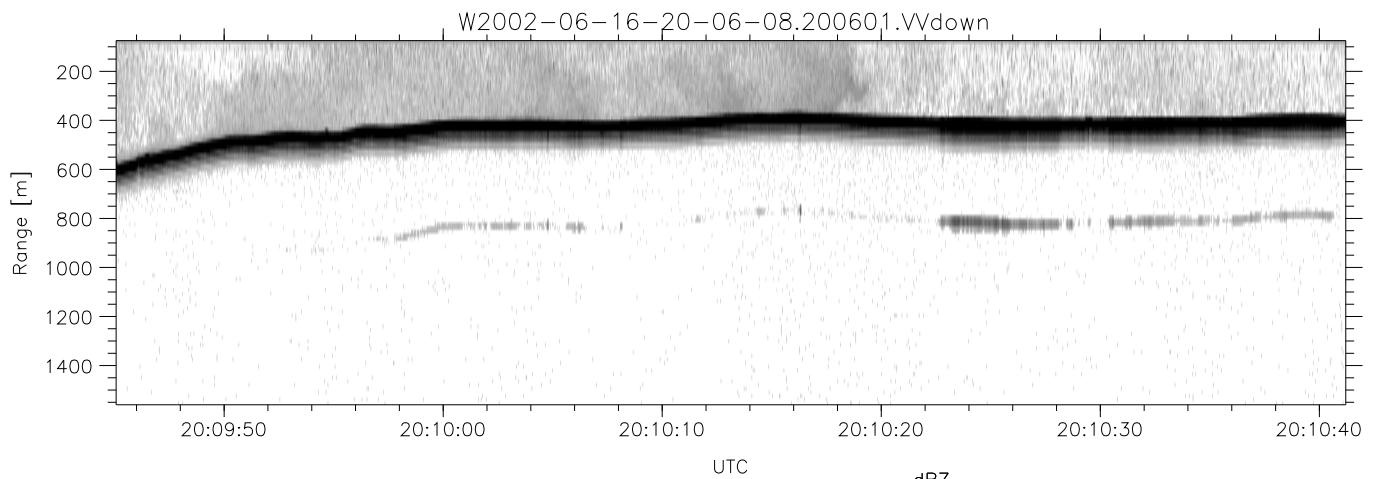
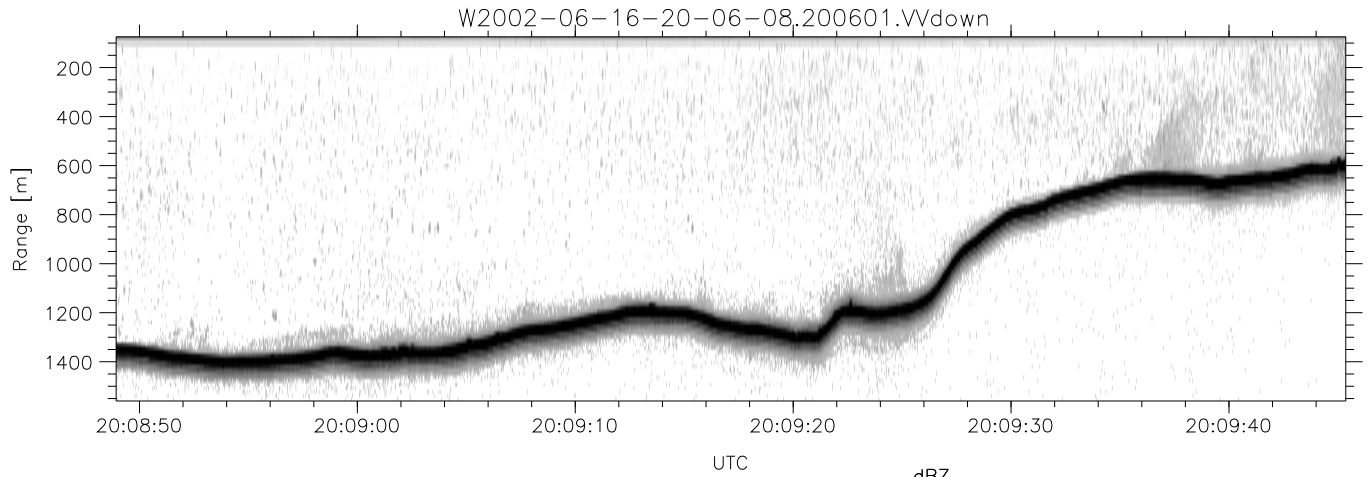


IHOP 2002 (dual-antenna config, modes 1,3,4,7) Data (cal: 49.0,50.0)

W2002-06-16-20-06-08 - PPMAG4
 IRIG:1,UTC: 20:06:01.03 to 20:24:56.66, Dur: 1135s
 TimeLngth: 1135.62s, TimeInt: 29ms (34.1pps)
 TimeCor=-13.0s, DSPDif(mn,min,mx):29,28,385
 PPS(min,max,std): 20,36,2.42
 Prof: 464 to 39165, NumProf(t/r): 38701/17069
 ProcTime/Recs: 20:06:01-20:14:22/0-17068
 MxACQtime: 33ms; DRate: 190.8KB/s; Flags: 0, 0, 0
 Pulse: 275ns, IFfilt: 5.0MHz; ppPol: HH HV VV
 TxPol: HHVV, PRF: 20 10 20 10 kHz
 Range: Delay 75m, Spacing 15m, Gates 100
 Ave. Pulses: 84, Rng/Prof Aspect@90m/s: 5.7

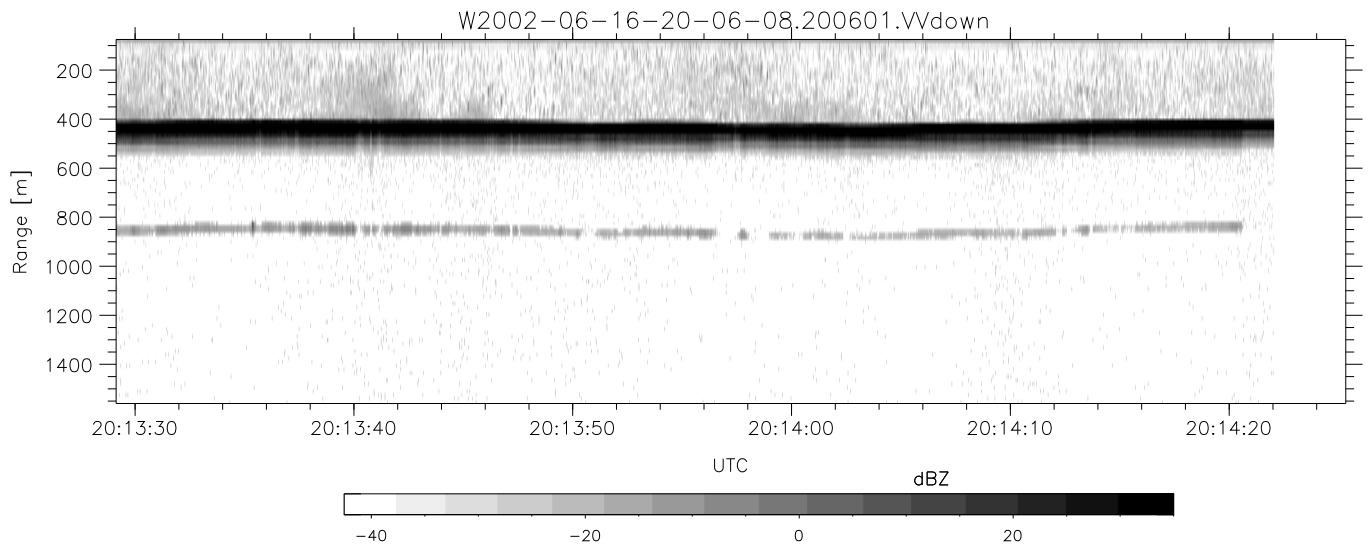
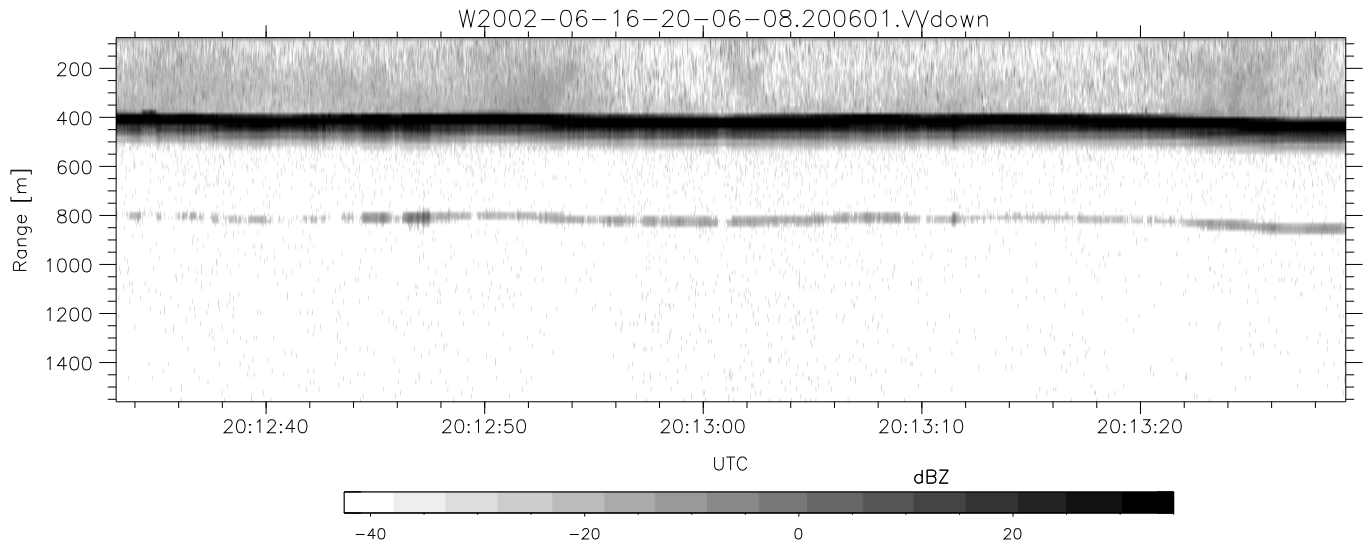
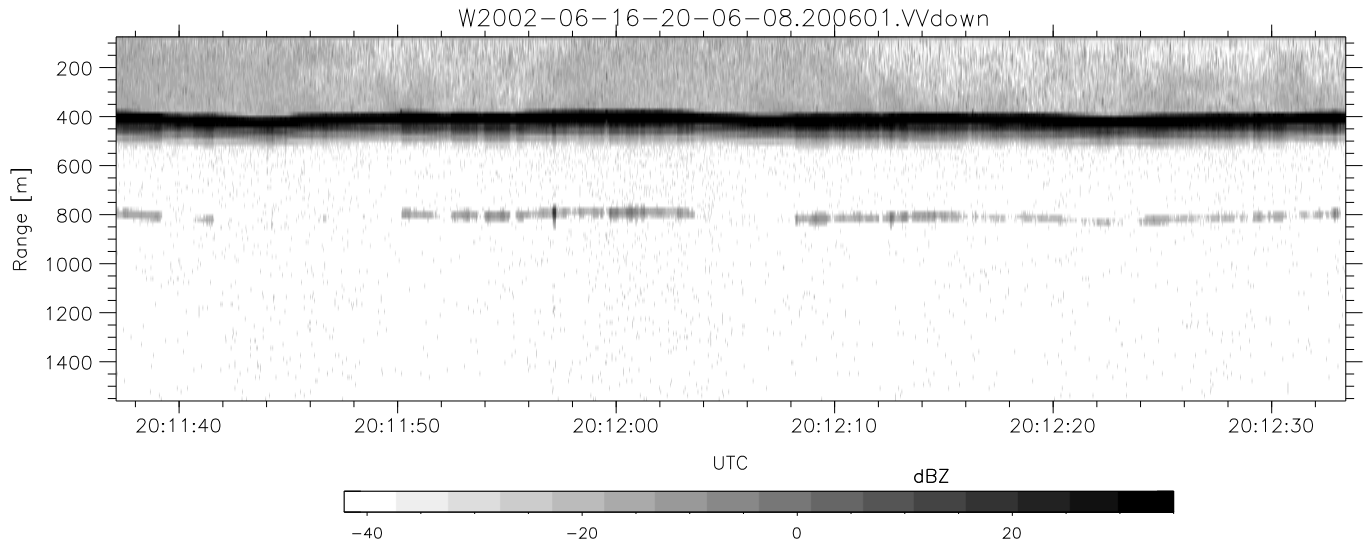
	Min	Max	Mean	Std	Varc%
hhN(dB)	-68.48	-64.44	-66.28	-76.34	9.9
vvN(dB)	-68.19	-64.86	-66.54	-76.56	10.0
hhL(dB)	-21.81	-4.24	-7.90	-11.90	39.9
vvL(dB)	-7.96	0.22	-4.10	-7.50	45.7
ppN(m/s)	-12.50	12.26	-0.04	4.15	
ppT(m/s)	-98.75	96.88	-0.28	32.75	
hh/vv(dB)	-NaN	48.29	12.04	28.32	4252
vh/hh(dB)	-NaN	-30.15	-36.32	-35.87	110.
hv/vv(dB)	-NaN	-34.62	-55.98	-47.12	768.
hnjmp(dB)	-2.49	2.41	-0.07	-8.60	14.0
vnjmp(dB)	-2.68	2.10	-0.08	-8.59	14.1



IHOP 2002 (dual-antenna config, modes 1,3,4,7) Data (cal: 49.0,50.0)

W2002-06-16-20-06-08 - PPMAG4
 IRIG:1,UTC: 20:06:01.03 to 20:24:56.66, Dur: 1135s
 TimeLngth: 1135.62s, TimeInt: 29ms (34.1pps)
 TimeCor=-13.0s, DSPDif(mn,min,mx):29,28,385
 PPS(min,max,std): 20,36,2.42
 Prof: 464 to 39165, NumProf(t/r): 38701/17069
 ProcTime/Recs: 20:06:01-20:14:22/0-17068
 MxACQtime: 33ms; DRate: 190.8KB/s; Flags: 0, 0, 0
 Pulse: 275ns, IFfilt: 5.0MHz; ppPol: HH HV VV
 TxPol: HHVV, PRF: 20 10 20 10 kHz
 Range: Delay 75m, Spacing 15m, Gates 100
 Ave. Pulses: 84, Rng/Prof Aspect@90m/s: 5.7

	Min	Max	Mean	Std	Varc%
hhN(dB)	-68.48	-64.44	-66.28	-76.34	9.9
vvN(dB)	-68.19	-64.86	-66.54	-76.56	10.0
hhL(dB)	-21.81	-4.24	-7.90	-11.90	39.9
vvL(dB)	-7.96	0.22	-4.10	-7.50	45.7
ppN(m/s)	-12.50	12.26	-0.04	4.15	
ppT(m/s)	-98.75	96.88	-0.28	32.75	
hh/vv(dB)	-NaN	48.29	12.04	28.32	4252
vh/hh(dB)	-NaN	-30.15	-36.32	-35.87	110.
hv/vv(dB)	-NaN	-34.62	-55.98	-47.12	768.
hnjmp(dB)	-2.49	2.41	-0.07	-8.60	14.0
vnjmp(dB)	-2.68	2.10	-0.08	-8.59	14.1



IHOP 2002 (dual-antenna config, modes 1,3,4,7) Data (cal: 49.0,50.0)

W2002-06-16-20-06-08 - PPMAG4						
IRIG:1,UTC: 20:06:01.03 to 20:24:56.66, Dur: 1135s	hhN(dB)	Min	Max	Mean	Std	Varc%
TimeLngth: 1135.62s, TimeInt: 29ms (34.1pps)	vvN(dB)	-68.48	-64.44	-66.28	-76.34	9.9
TimeCor=-13.0s, DSPDif(mn,min,mx):29,28,385	hhL(dB)	-68.19	-64.86	-66.54	-76.56	10.0
PPS(min,max,std): 20,36,2.42	vvL(dB)	-21.81	-4.24	-7.90	-11.90	39.9
Prof: 464 to 39165, NumProf(t/r): 38701/17069	ppL(m/s)	-7.96	0.22	-4.10	-7.50	45.7
ProcTime/Recs: 20:06:01-20:14:22/0-17068	ppN(m/s)	-12.50	12.26	-0.04	4.15	
MxAcQtime: 33ms; DRate: 190.8KB/s; Flags: 0, 0, 0	ppT(m/s)	-98.75	96.88	-0.28	32.75	
Pulse: 275ns, IFilt: 5.0MHz; ppPol: HH HV VV	hh/vv(dB)	-NaN	48.29	12.04	28.32	4252
TxPol: HHVV, PRF: 20 10 20 10 kHz	vh/hh(dB)	-NaN	-30.15	-36.32	-35.87	110.
Range: Delay 75m, Spacing 15m, Gates 100	hv/vv(dB)	-NaN	-34.62	-55.98	-47.12	768.
Ave. Pulses: 84, Rng/Prof Aspect@90m/s: 5.7	hn/jmp(dB)	-2.49	2.41	-0.07	-8.60	14.0
	vn/jmp(dB)	-2.68	2.10	-0.08	-8.59	14.1