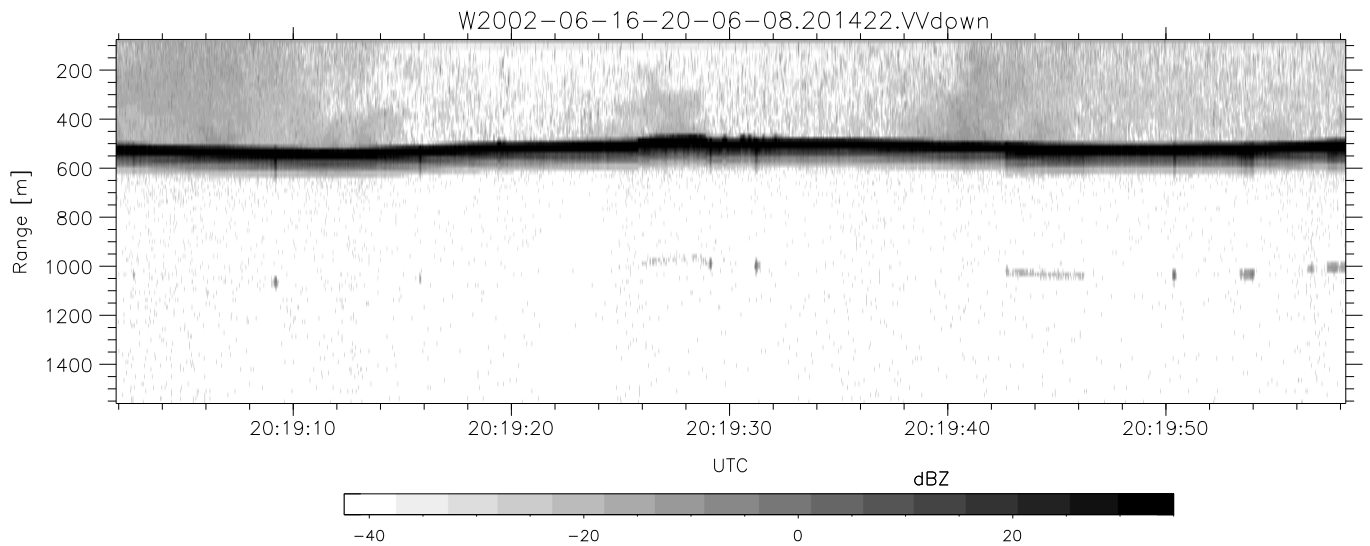
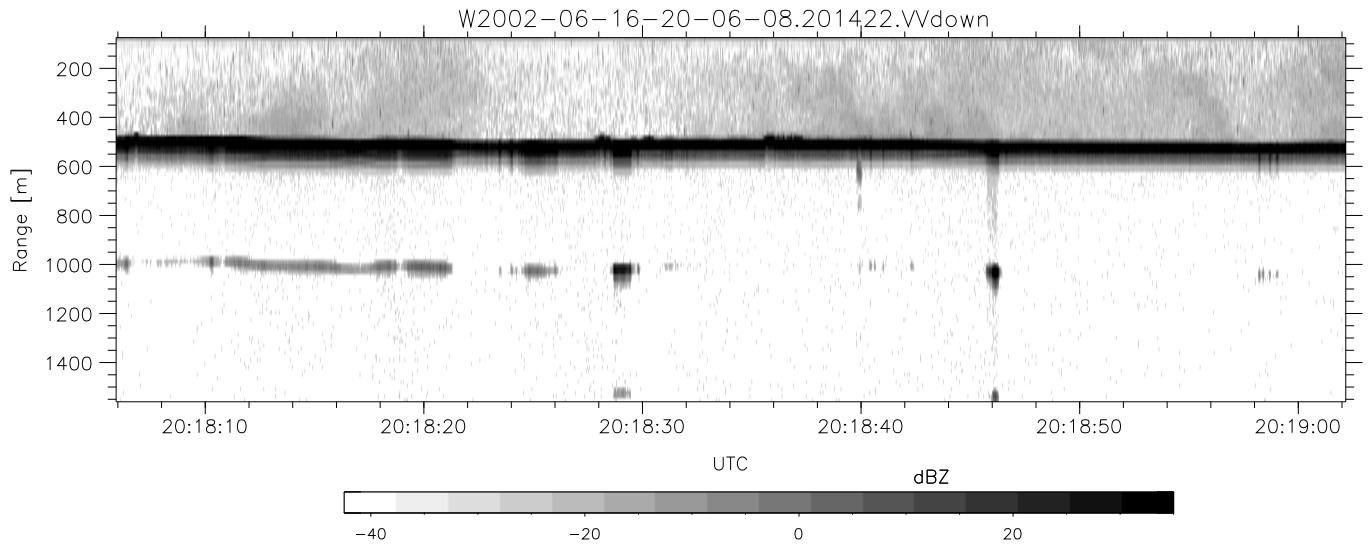
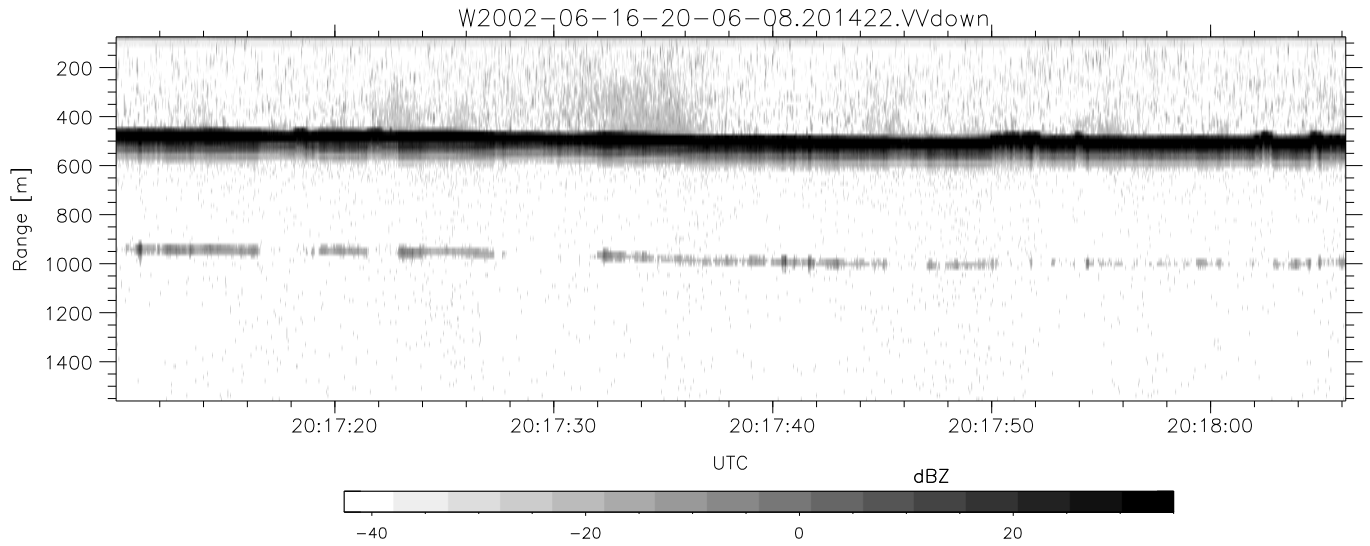


IHOP 2002 (dual-antenna config, modes 1,3,4,7) Data (cal: 49.0,50.0)

W2002-06-16-20-06-08 - PPMAG4  
 IRIG:1,UTC: 20:06:01.03 to 20:24:56.66, Dur: 1135s  
 TimeLngth: 1135.62s, TimeInt: 29ms (34.1pps)  
 TimeCor=-13.0s, DSPDif(mn,min,mx):29,28,378  
 PPS(min,max,std): 23,36,2.39  
 Prof: 464 to 39165, NumProf(t/r): 38701/17069  
 ProcTime/Recs: 20:14:22-20:22:42/17069-34137  
 MxACQtime: 33ms; DRate: 190.8KB/s; Flags: 0, 0, 0  
 Pulse: 275ns, IFfilt: 5.0MHz; ppPol: HH HV VV  
 TxPol: HHVV, PRF: 20 10 20 10 kHz  
 Range: Delay 75m, Spacing 15m, Gates 100  
 Ave. Pulses: 84, Rng/Prof Aspect@90m/s: 5.7

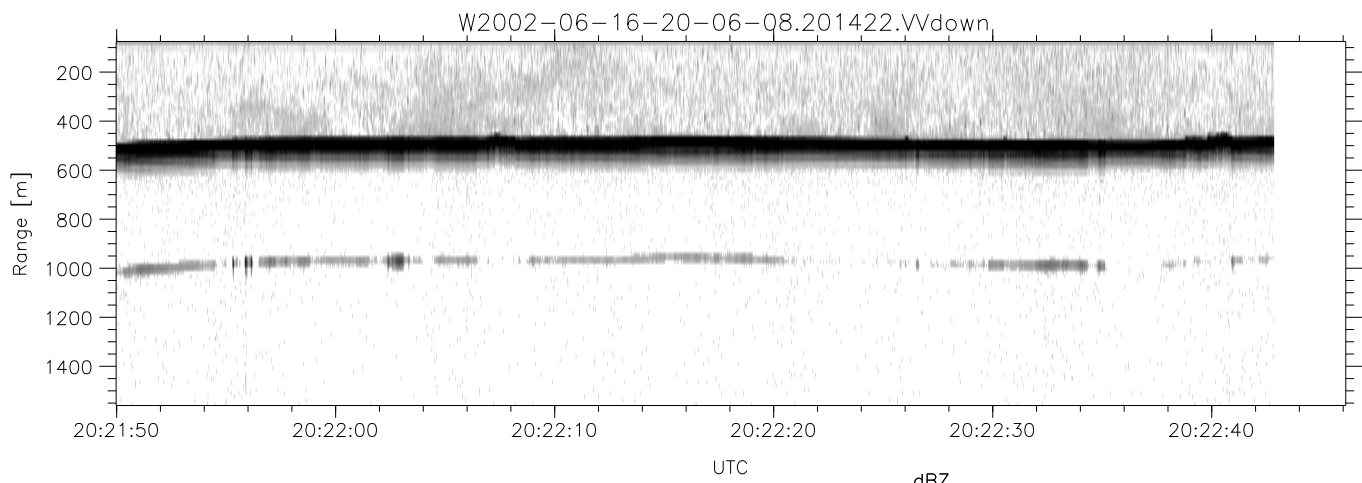
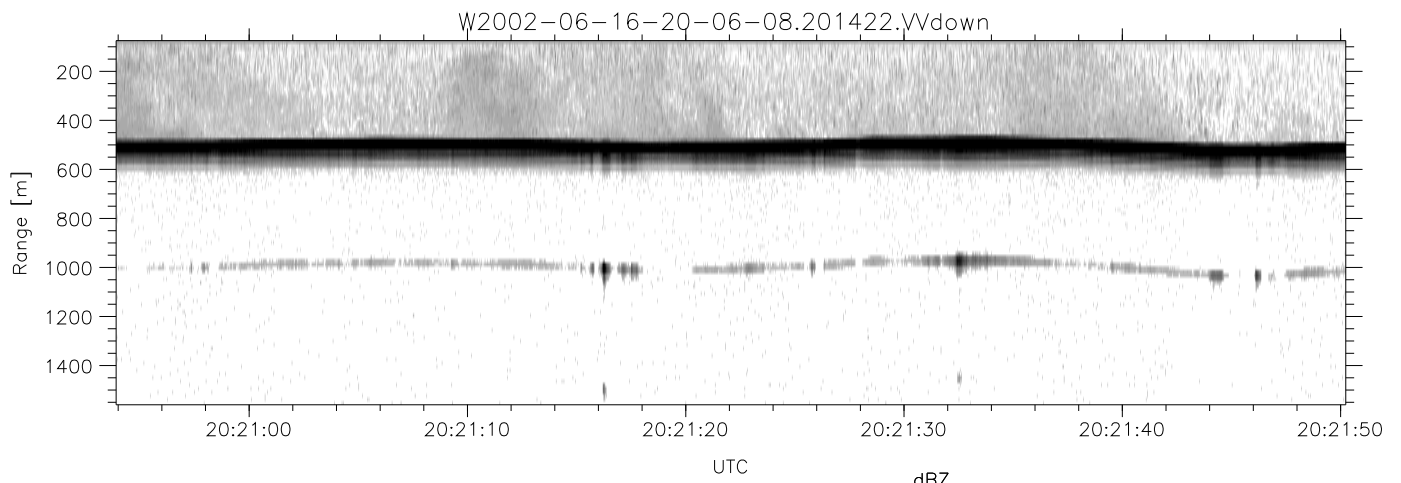
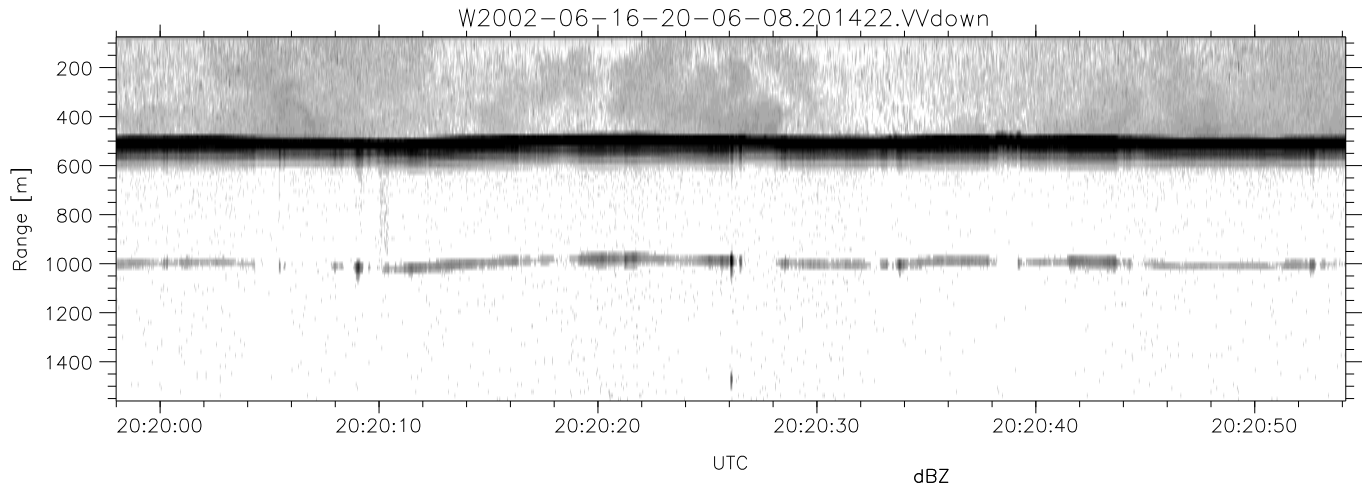
	Min	Max	Mean	Std	Varc%
hhN(dB)	-68.11	-64.68	-66.29	-76.36	9.9
vvN(dB)	-68.51	-64.94	-66.60	-76.55	10.1
hhL(dB)	-10.40	-5.73	-8.35	-16.64	14.8
vvL(dB)	-7.06	-1.67	-4.60	-11.07	22.5
ppN(m/s)	-12.67	12.33	-0.02	4.14	
ppT(m/s)	-100.0	97.44	-0.19	32.72	
hh/vv(dB)	-NaN	53.65	13.15	32.64	8894
vh/hh(dB)	-NaN	-31.44	-36.72	-36.65	101.
hv/vv(dB)	-NaN	-29.24	-54.91	-46.79	648.
hnjmp(dB)	-2.10	2.26	0.16	-8.43	13.9
vnjmp(dB)	-2.07	2.33	0.17	-8.31	14.2



IHOP 2002 (dual-antenna config, modes 1,3,4,7) Data (cal: 49.0,50.0)

W2002-06-16-20-06-08 - PPMAG4  
 IRIG:1,UTC: 20:06:01.03 to 20:24:56.66, Dur: 1135s  
 TimeLngth: 1135.62s, TimeInt: 29ms (34.1pps)  
 TimeCor=-13.0s, DSPDif(mn,min,mx):29,28,378  
 PPS(min,max,std): 23,36,2.39  
 Prof: 464 to 39165, NumProf(t/r): 38701/17069  
 ProcTime/Recs: 20:14:22-20:22:42/17069-34137  
 MxAcQtime: 33ms; DRate: 190.8KB/s; Flags: 0, 0, 0  
 Pulse: 275ns, IFilt: 5.0MHz; ppPol: HH HV VV  
 TxPol: HHVV, PRF: 20 10 20 10 kHz  
 Range: Delay 75m, Spacing 15m, Gates 100  
 Ave. Pulses: 84, Rng/Prof Aspect@90m/s: 5.7

	Min	Max	Mean	Std	Varc%
hhN(dB)	-68.11	-64.68	-66.29	-76.36	9.9
vvN(dB)	-68.51	-64.94	-66.60	-76.55	10.1
hhL(dB)	-10.40	-5.73	-8.35	-16.64	14.8
vvL(dB)	-7.06	-1.67	-4.60	-11.07	22.5
ppN(m/s)	-12.67	12.33	-0.02	4.14	
ppT(m/s)	-100.0	97.44	-0.19	32.72	
hh/vv(dB)	-NaN	53.65	13.15	32.64	8894
vh/hh(dB)	-NaN	-31.44	-36.72	-36.65	101.
hv/vv(dB)	-NaN	-29.24	-54.91	-46.79	648.
hnjmp(dB)	-2.10	2.26	0.16	-8.43	13.9
vnjmp(dB)	-2.07	2.33	0.17	-8.31	14.2



IHOP 2002 (dual-antenna config, modes 1,3,4,7) Data (cal: 49.0,50.0)

W2002-06-16-20-06-08 - PPMAG4  
 IRIG:1,UTC: 20:06:01.03 to 20:24:56.66, Dur: 1135s  
 TimeLngth: 1135.62s, TimeInt: 29ms (34.1pps)  
 TimeCor=-13.0s, DSPDif(mn,min,mx):29,28,378  
 PPS(min,max,std): 23,36,2.39  
 Prof: 464 to 39165, NumProf(t/r): 38701/17069  
 ProcTime/Recs: 20:14:22-20:22:42/17069-34137  
 MxACQtime: 33ms; DRate: 190.8KB/s; Flags: 0, 0, 0  
 Pulse: 275ns, IFfilt: 5.0MHz; ppPol: HH HV VV  
 TxPol: HHVV, PRF: 20 10 20 10 kHz  
 Range: Delay 75m, Spacing 15m, Gates 100  
 Ave. Pulses: 84, Rng/Prof Aspect@90m/s: 5.7

	Min	Max	Mean	Std	Varc%
hhN(dB)	-68.11	-64.68	-66.29	-76.36	9.9
vvN(dB)	-68.51	-64.94	-66.60	-76.55	10.1
hhL(dB)	-10.40	-5.73	-8.35	-16.64	14.8
vvL(dB)	-7.06	-1.67	-4.60	-11.07	22.5
ppN(m/s)	-12.67	12.33	-0.02	4.14	
ppT(m/s)	-100.0	97.44	-0.19	32.72	
hh/vv(dB)	-NaN	53.65	13.15	32.64	8894
vh/hh(dB)	-NaN	-31.44	-36.72	-36.65	101.
hv/vv(dB)	-NaN	-29.24	-54.91	-46.79	648.
hnjmp(dB)	-2.10	2.26	0.16	-8.43	13.9
vnjmp(dB)	-2.07	2.33	0.17	-8.31	14.2