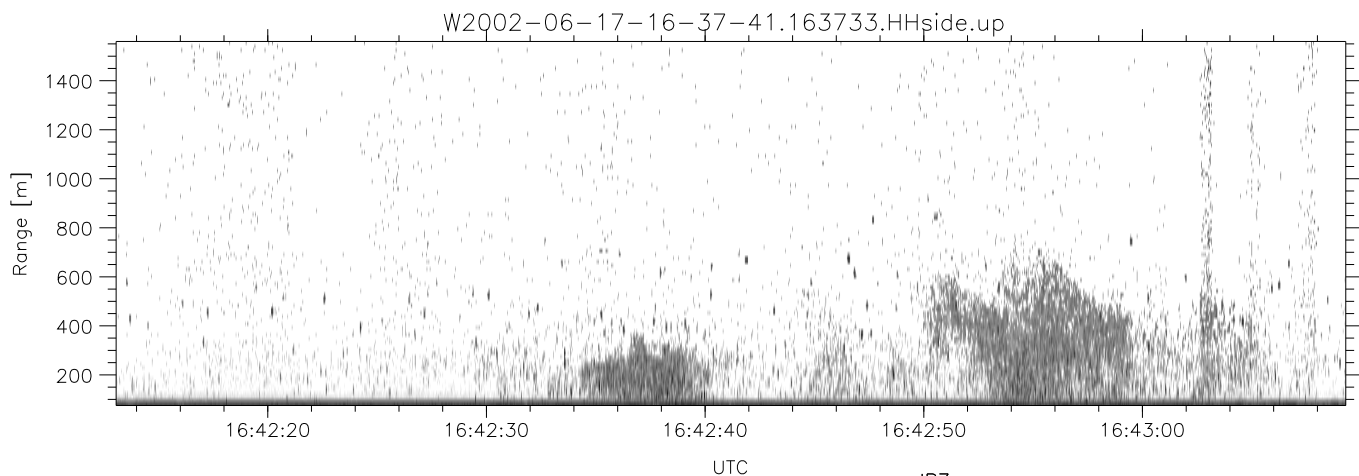
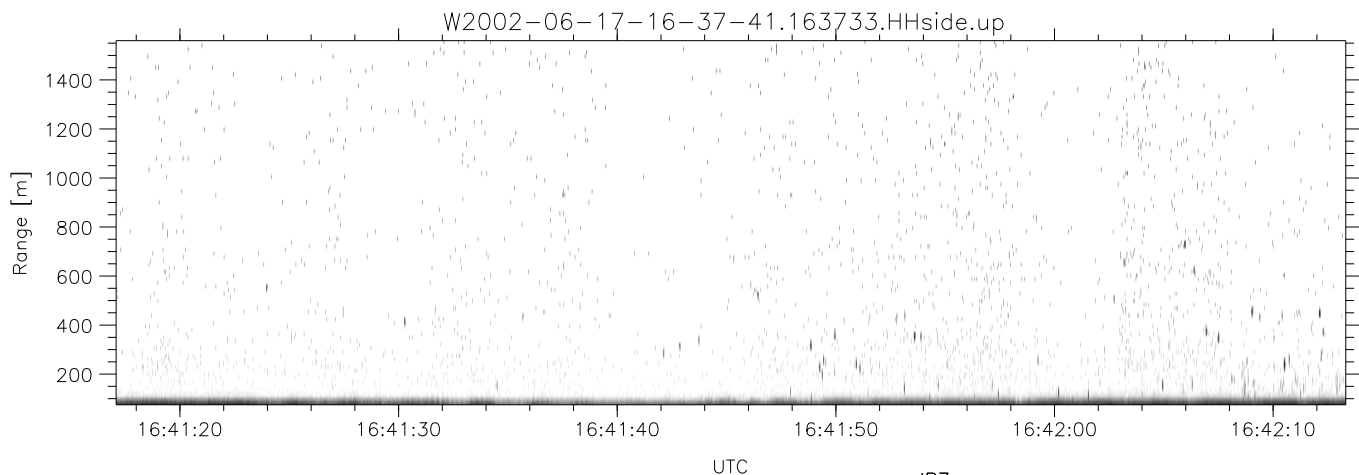
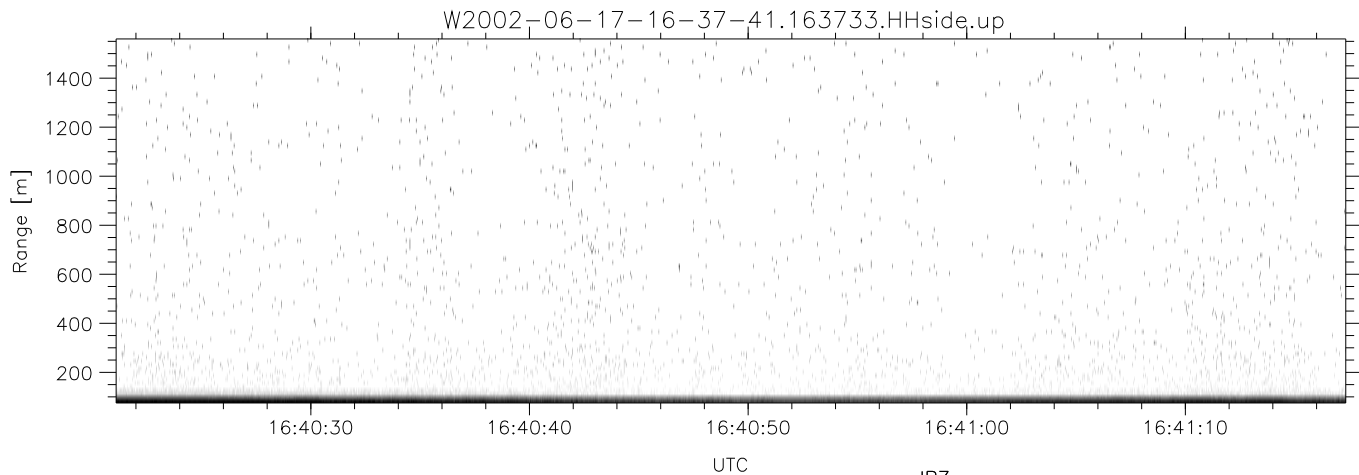


IHOP 2002 (dual-antenna config, modes 1,3,4,7) Data (cal: 49.0,50.0)

W2002-06-17-16-37-41 - PPMAG4
 IRIG:1,UTC: 16:37:33.07 to 17:07:08.50, Dur: 1775s
 TimeLngth: 1775.43s, TimeInt: 28ms (34.7pps)
 TimeCor=-13.0s, DSPDif(mn,min,mx):28,28,329
 PPS(min,max,std): 23,36,2.15
 Prof: 693 to 62256, NumProf(t/r): 61563/17069
 ProcTime/Recs: 16:37:33-16:45:45/0-17068
 MxACQtime: 33ms; DRate: 194.1KB/s; Flags: 0, 0, 0
 Pulse: 275ns, IFfilt: 5.0MHz; ppPol: HH HV VV
 TxPol: HHVV, PRF: 20 10 20 10 kHz
 Range: Delay 75m, Spacing 15m, Gates 100
 Ave. Pulses: 84, Rng/Prof Aspect@90m/s: 5.8

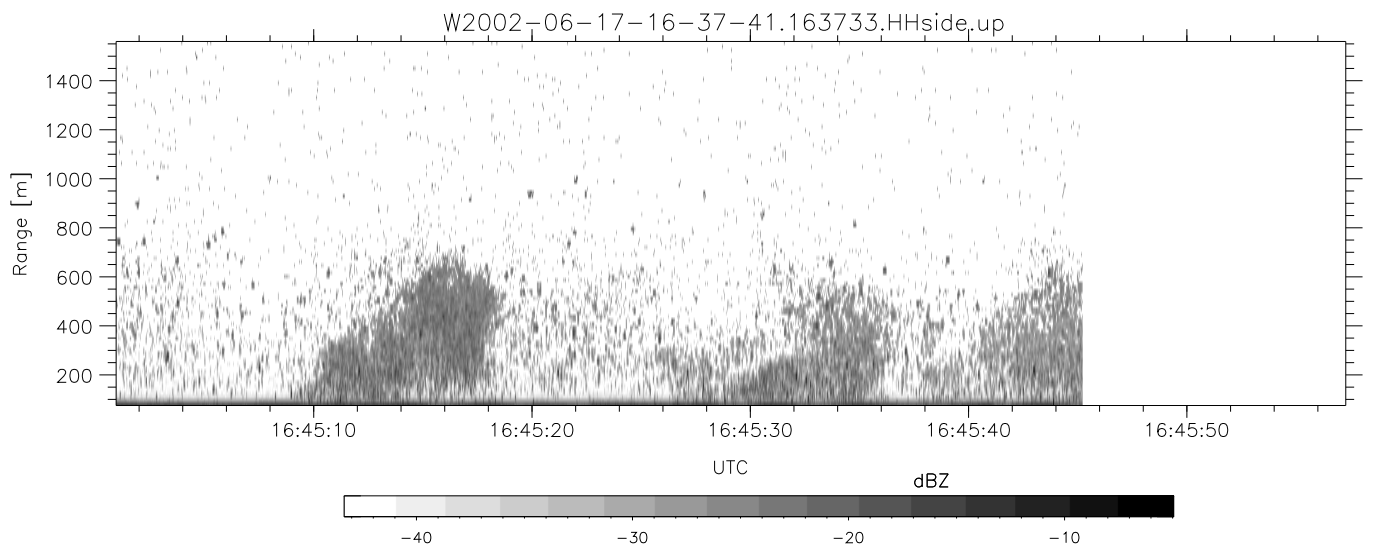
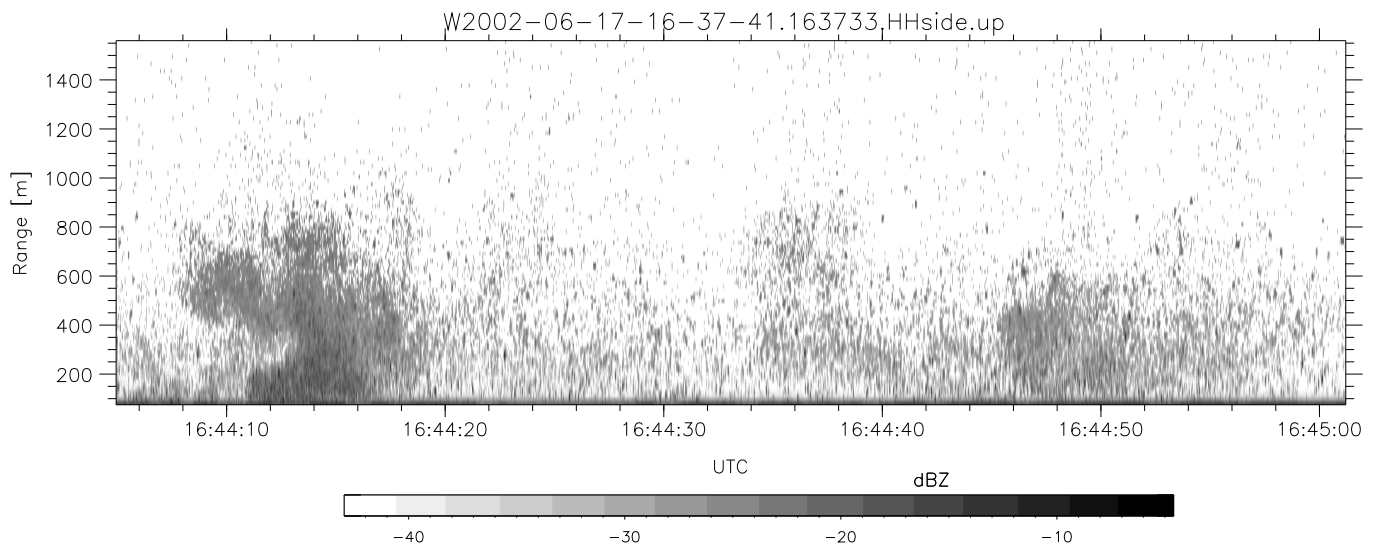
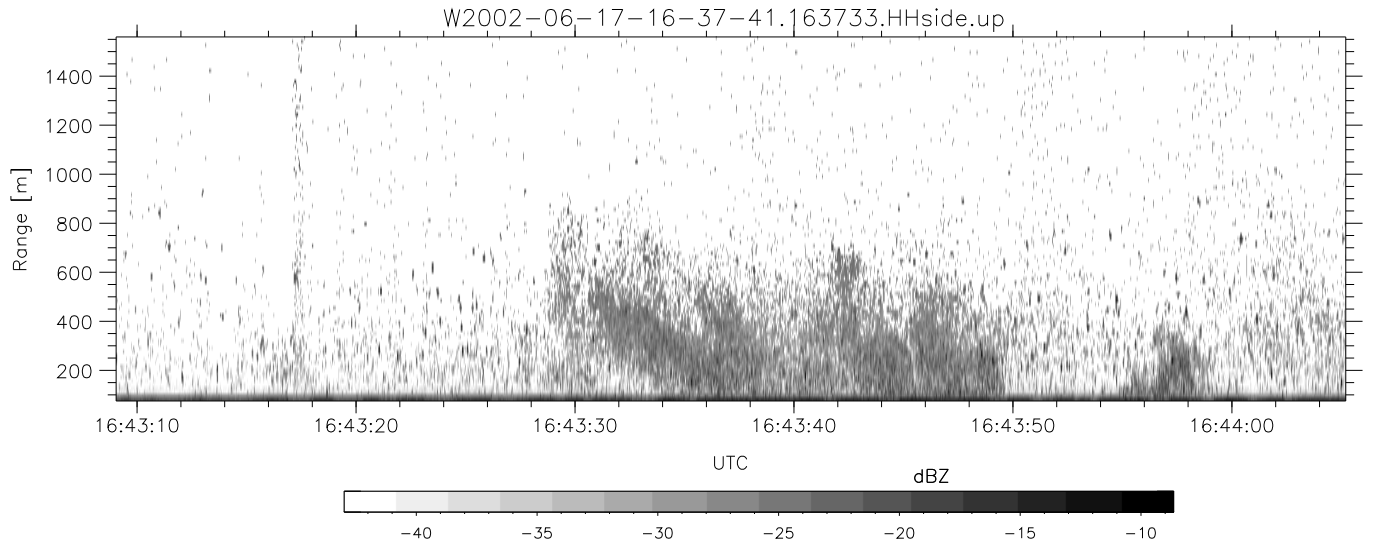
	Min	Max	Mean	Std	Varc%
hhN(dB)	-67.02	-63.44	-65.27	-75.15	10.3
vvN(dB)	-67.44	-63.63	-65.64	-75.37	10.6
hhL(dB)	-18.55	0.63	-2.52	-5.12	55.0
vvL(dB)	-12.35	0.34	-4.46	-8.10	43.3
ppN(m/s)	-12.16	12.65	-0.06	4.08	
ppT(m/s)	-96.07	99.90	-0.49	32.23	
hh/vv(dB)	-NaN	46.65	15.02	31.49	4434
vh/hh(dB)	-37.40	2.92	-6.95	-2.31	290.
hv/vv(dB)	-NaN	-18.12	-40.94	-32.01	782.
hh_jmp(dB)	-2.05	2.21	0.15	-8.55	13.5
vv_jmp(dB)	-2.45	2.59	0.16	-8.43	13.8



IHOP 2002 (dual-antenna config, modes 1,3,4,7) Data (cal: 49.0,50.0)

W2002-06-17-16-37-41 - PPMAG4
 IRIG:1,UTC: 16:37:33.07 to 17:07:08.50, Dur: 1775s
 TimeLngth: 1775.43s, TimeInt: 28ms (34.7pps)
 TimeCor=-13.0s, DSPDif(mn,min,mx):28,28,329
 PPS(min,max,std): 23,36,2.15
 Prof: 693 to 62256, NumProf(t/r): 61563/17069
 ProcTime/Recs: 16:37:33-16:45:45/0-17068
 MxAcQtime: 33ms; DRate: 194.1KB/s; Flags: 0, 0, 0
 Pulse: 275ns, IFfilt: 5.0MHz; ppPol: HH HV VV
 TxPol: HHVV, PRF: 20 10 20 10 kHz
 Range: Delay 75m, Spacing 15m, Gates 100
 Ave. Pulses: 84, Rng/Prof Aspect@90m/s: 5.8

	Min	Max	Mean	Std	Varc%
hhN(dB)	-67.02	-63.44	-65.27	-75.15	10.3
vvN(dB)	-67.44	-63.63	-65.64	-75.37	10.6
hhL(dB)	-18.55	0.63	-2.52	-5.12	55.0
vvL(dB)	-12.35	0.34	-4.46	-8.10	43.3
ppN(m/s)	-12.16	12.65	-0.06	4.08	
ppT(m/s)	-96.07	99.90	-0.49	32.23	
hh/vv(dB)	-NaN	46.65	15.02	31.49	4434
vh/hh(dB)	-37.40	2.92	-6.95	-2.31	290.
hv/vv(dB)	-NaN	-18.12	-40.94	-32.01	782.
hnjmp(dB)	-2.05	2.21	0.15	-8.55	13.5
vnjmp(dB)	-2.45	2.59	0.16	-8.43	13.8



IHOP 2002 (dual-antenna config, modes 1,3,4,7) Data (cal: 49.0,50.0)

W2002-06-17-16-37-41 - PPMAG4
 IRIG:1,UTC: 16:37:33.07 to 17:07:08.50, Dur: 1775s
 TimeLngth: 1775.43s, TimeInt: 28ms (34.7pps)
 TimeCor=-13.0s, DSPDif(mn,min,mx):28,28,329
 PPS(min,max,std): 23,36,2.15
 Prof: 693 to 62256, NumProf(t/r): 61563/17069
 ProcTime/Recs: 16:37:33-16:45:45/0-17068
 MxACQtime: 33ms; DRate: 194.1KB/s; Flags: 0, 0, 0
 Pulse: 275ns, IFfilt: 5.0MHz; ppPol: HH HV VV
 TxPol: HHVV, PRF: 20 10 20 10 kHz
 Range: Delay 75m, Spacing 15m, Gates 100
 Ave. Pulses: 84, Rng/Prof Aspect@90m/s: 5.8

	Min	Max	Mean	Std	Varc%
hhN(dB)	-67.02	-63.44	-65.27	-75.15	10.3
vvN(dB)	-67.44	-63.63	-65.64	-75.37	10.6
hhL(dB)	-18.55	0.63	-2.52	-5.12	55.0
vvL(dB)	-12.35	0.34	-4.46	-8.10	43.3
ppN(m/s)	-12.16	12.65	-0.06	4.08	
ppT(m/s)	-96.07	99.90	-0.49	32.23	
hh/vv(dB)	-NaN	46.65	15.02	31.49	4434
vh/hh(dB)	-37.40	2.92	-6.95	-2.31	290.
hv/vv(dB)	-NaN	-18.12	-40.94	-32.01	782.
hnjmp(dB)	-2.05	2.21	0.15	-8.55	13.5
vnjmp(dB)	-2.45	2.59	0.16	-8.43	13.8