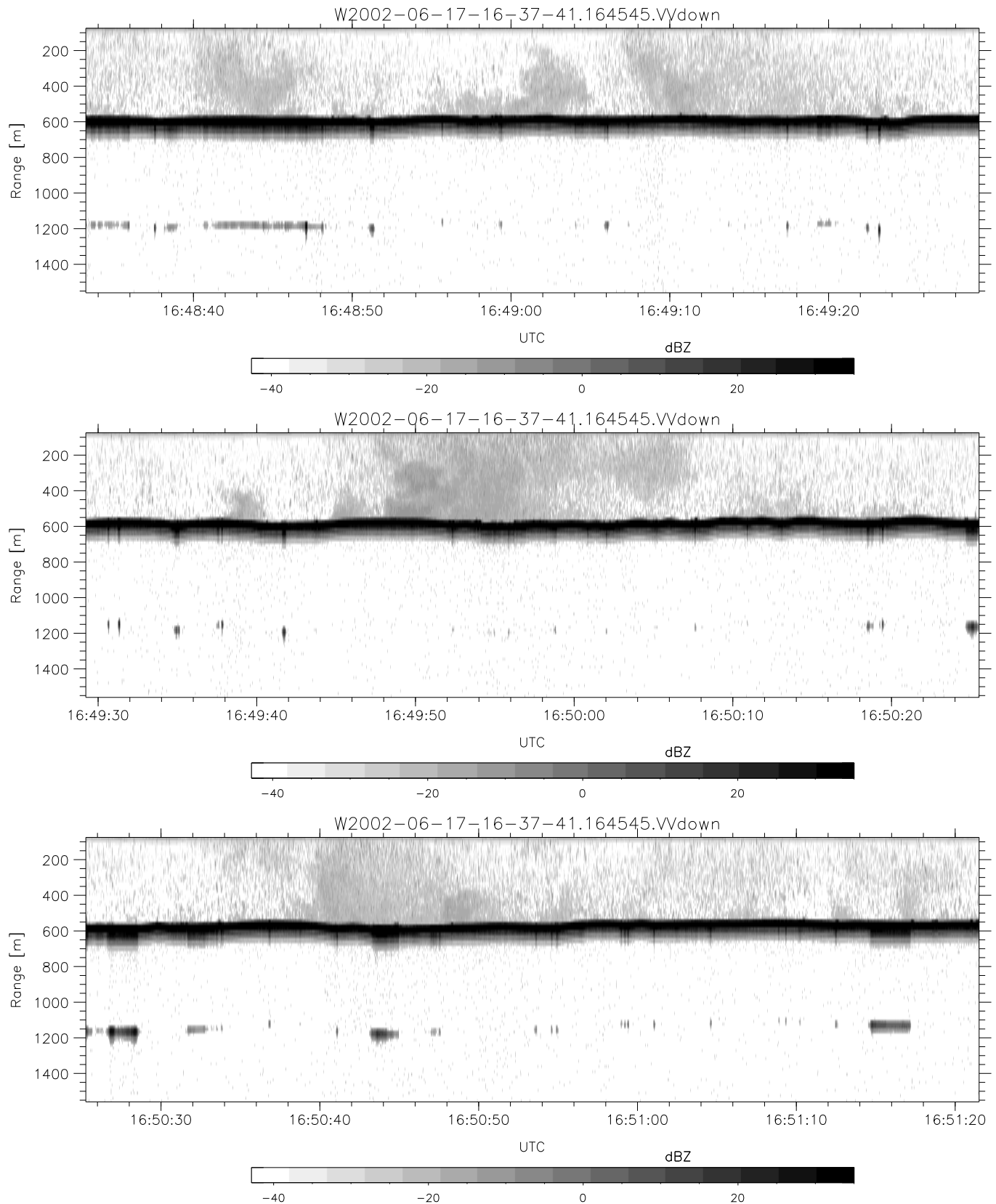


IHOP 2002 (dual-antenna config, modes 1,3,4,7) Data (cal: 49.0,50.0)

W2002-06-17-16-37-41 - PPMAG4
 IRIG:1,UTC: 16:37:33.07 to 17:07:08.50, Dur: 1775s
 TimeLngth: 1775.43s, TimeInt: 28ms (34.7pps)
 TimeCor=-13.0s, DSPDif(mn,min,mx):28,28,307
 PPS(min,max,std): 25,36,2.16
 Prof: 693 to 62256, NumProf(t/r): 61563/17069
 ProcTime/Recs: 16:45:45-16:53:57/17069-34137
 MxACQtime: 33ms; DRate: 194.1KB/s; Flags: 0, 0, 0
 Pulse: 275ns, IFfilt: 5.0MHz; ppPol: HH HV VV
 TxPol: HHVV, PRF: 20 10 20 10 kHz
 Range: Delay 75m, Spacing 15m, Gates 100
 Ave. Pulses: 84, Rng/Prof Aspect@90m/s: 5.8

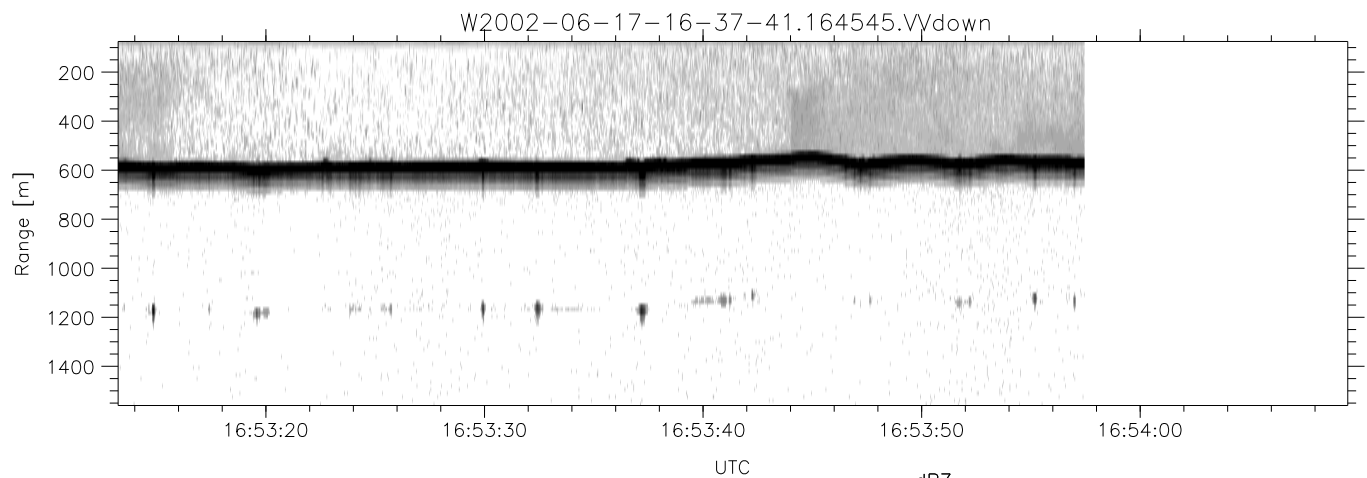
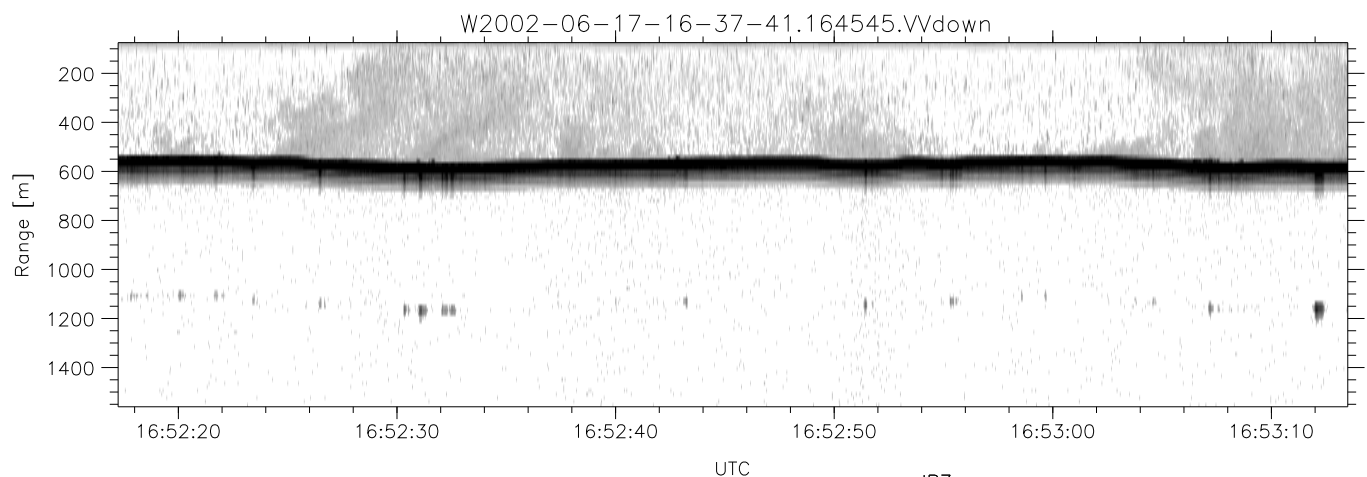
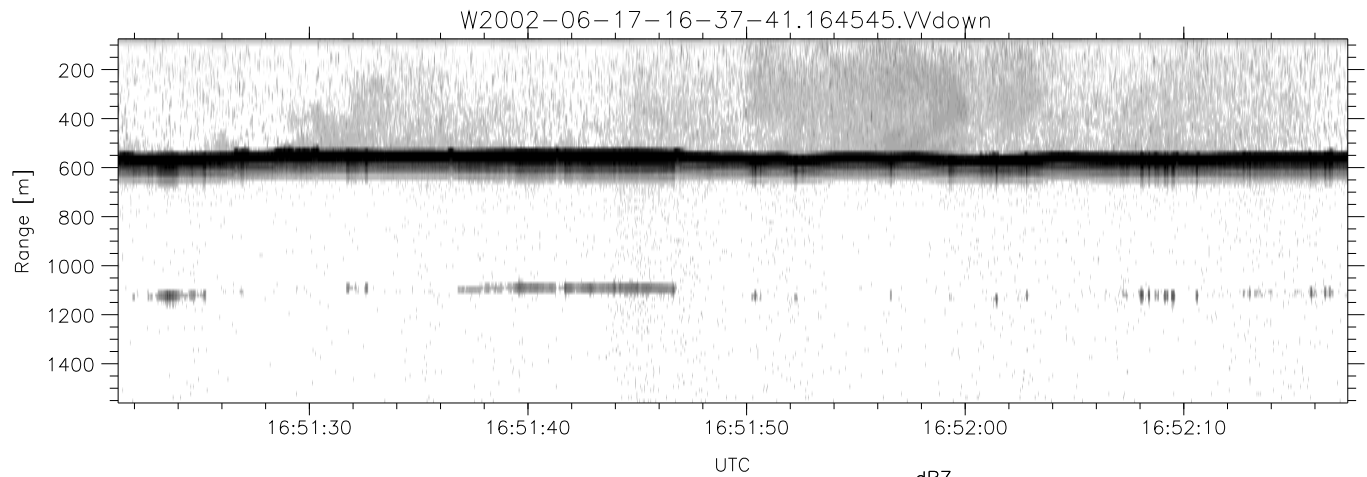
	Min	Max	Mean	Std	Varc%
hhN(dB)	-66.97	-63.67	-65.26	-75.37	9.7
vvN(dB)	-67.61	-64.03	-65.59	-75.68	9.8
hhL(dB)	-7.29	-1.81	-5.21	-14.13	12.8
vvL(dB)	-7.03	-0.80	-3.85	-8.77	32.2
ppN(m/s)	-12.04	12.47	-0.00	4.14	
ppT(m/s)	-95.10	98.55	-0.00	32.74	
hh/vv(dB)	-NaN	56.65	16.04	35.85	9582
vh/hh(dB)	-NaN	-30.86	-36.90	-36.11	120.
hv/vv(dB)	-NaN	-35.10	-52.40	-46.09	427.
hnjmp(dB)	-2.68	1.98	-0.08	-8.71	13.7
vnjmp(dB)	-2.23	2.00	-0.07	-8.68	13.8



IHOP 2002 (dual-antenna config, modes 1,3,4,7) Data (cal: 49.0,50.0)

W2002-06-17-16-37-41 - PPMAG4
 IRIG:1,UTC: 16:37:33.07 to 17:07:08.50, Dur: 1775s
 TimeLngth: 1775.43s, TimeInt: 28ms (34.7pps)
 TimeCor=-13.0s, DSPDif(mn,min,mx):28,28,307
 PPS(min,max,std): 25,36,2.16
 Prof: 693 to 62256, NumProf(t/r): 61563/17069
 ProcTime/Recs: 16:45:45-16:53:57/17069-34137
 MxACQtime: 33ms; DRate: 194.1KB/s; Flags: 0, 0, 0
 Pulse: 275ns, IFfilt: 5.0MHz; ppPol: HH HV VV
 TxPol: HHVV, PRF: 20 10 20 10 kHz
 Range: Delay 75m, Spacing 15m, Gates 100
 Ave. Pulses: 84, Rng/Prof Aspect@90m/s: 5.8

	Min	Max	Mean	Std	Varc%
hhN(dB)	-66.97	-63.67	-65.26	-75.37	9.7
vvN(dB)	-67.61	-64.03	-65.59	-75.68	9.8
hhL(dB)	-7.29	-1.81	-5.21	-14.13	12.8
vvL(dB)	-7.03	-0.80	-3.85	-8.77	32.2
ppN(m/s)	-12.04	12.47	-0.00	4.14	
ppT(m/s)	-95.10	98.55	-0.00	32.74	
hh/vv(dB)	-NaN	56.65	16.04	35.85	9582
vh/hh(dB)	-NaN	-30.86	-36.90	-36.11	120.
hv/vv(dB)	-NaN	-35.10	-52.40	-46.09	427.
hnjmp(dB)	-2.68	1.98	-0.08	-8.71	13.7
vnjmp(dB)	-2.23	2.00	-0.07	-8.68	13.8



IHOP 2002 (dual-antenna config, modes 1,3,4,7) Data (cal: 49.0,50.0)

W2002-06-17-16-37-41 - PPMAG4
 IRIG:1,UTC: 16:37:33.07 to 17:07:08.50, Dur: 1775s
 TimeLngth: 1775.43s, TimeInt: 28ms (34.7pps)
 TimeCor=-13.0s, DSPDif(mn,min,mx):28,28,307
 PPS(min,max,std): 25,36,2.16
 Prof: 693 to 62256, NumProf(t/r): 61563/17069
 ProcTime/Recs: 16:45:45-16:53:57/17069-34137
 MxACQtime: 33ms; DRate: 194.1KB/s; Flags: 0, 0, 0
 Pulse: 275ns, IFilt: 5.0MHz; ppPol: HH HV VV
 TxPol: HHVV, PRF: 20 10 20 10 kHz
 Range: Delay 75m, Spacing 15m, Gates 100
 Ave. Pulses: 84, Rng/Prof Aspect@90m/s: 5.8

	Min	Max	Mean	Std	Varc%
hhN(dB)	-66.97	-63.67	-65.26	-75.37	9.7
vvN(dB)	-67.61	-64.03	-65.59	-75.68	9.8
hhL(dB)	-7.29	-1.81	-5.21	-14.13	12.8
vvL(dB)	-7.03	-0.80	-3.85	-8.77	32.2
ppN(m/s)	-12.04	12.47	-0.00	4.14	
ppT(m/s)	-95.10	98.55	-0.00	32.74	
hh/vv(dB)	-NaN	56.65	16.04	35.85	9582
vh/hh(dB)	-NaN	-30.86	-36.90	-36.11	120.
hv/vv(dB)	-NaN	-35.10	-52.40	-46.09	427.
hnjmp(dB)	-2.68	1.98	-0.08	-8.71	13.7
vnjmp(dB)	-2.23	2.00	-0.07	-8.68	13.8