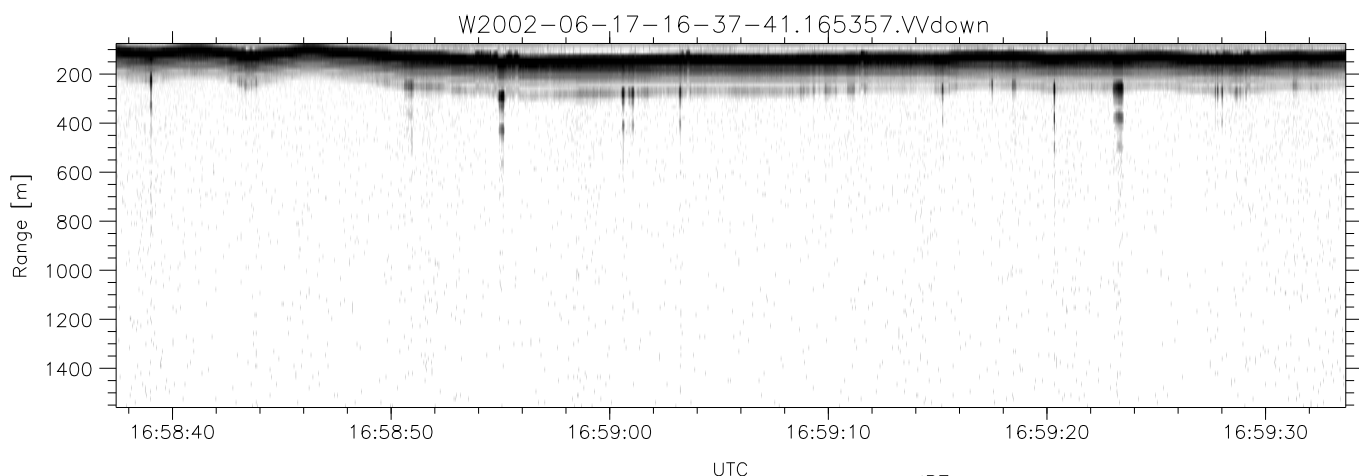
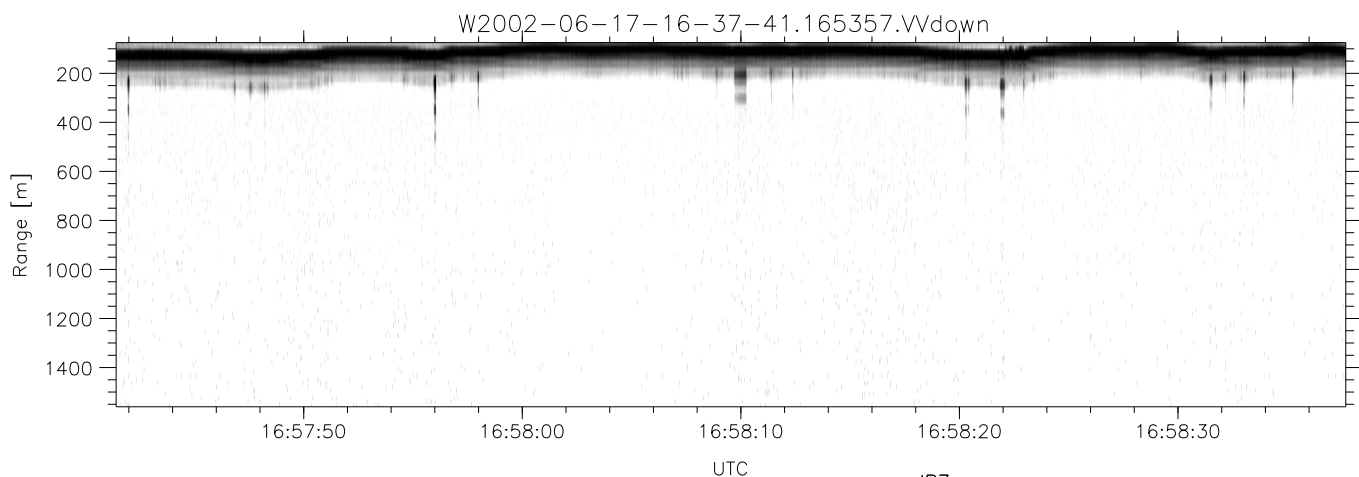
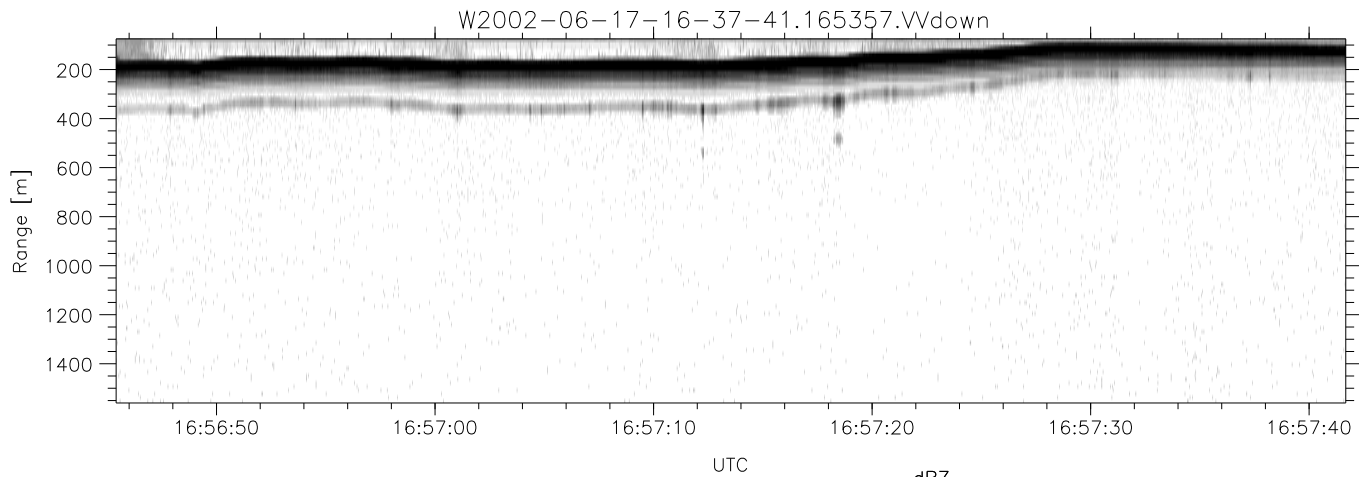


IHOP 2002 (dual-antenna config, modes 1,3,4,7) Data (cal: 49.0,50.0)

W2002-06-17-16-37-41 - PPMAG4
 IRIG:1,UTC: 16:37:33.07 to 17:07:08.50, Dur: 1775s
 TimeLngth: 1775.43s, TimeInt: 28ms (34.7pps)
 TimeCor=-13.0s, DSPDif(mn,min,mx):28,28,307
 PPS(min,max,std): 25,36,2.19
 Prof: 693 to 62256, NumProf(t/r): 61563/17069
 ProcTime/Recs: 16:53:57-17:02:09/34138-51206
 MxACQtime: 33ms; DRate: 194.1KB/s; Flags: 0, 0, 0
 Pulse: 275ns, IFfilt: 5.0MHz; ppPol: HH HV VV
 TxPol: HHVV, PRF: 20 10 20 10 kHz
 Range: Delay 75m, Spacing 15m, Gates 100
 Ave. Pulses: 84, Rng/Prof Aspect@90m/s: 5.8

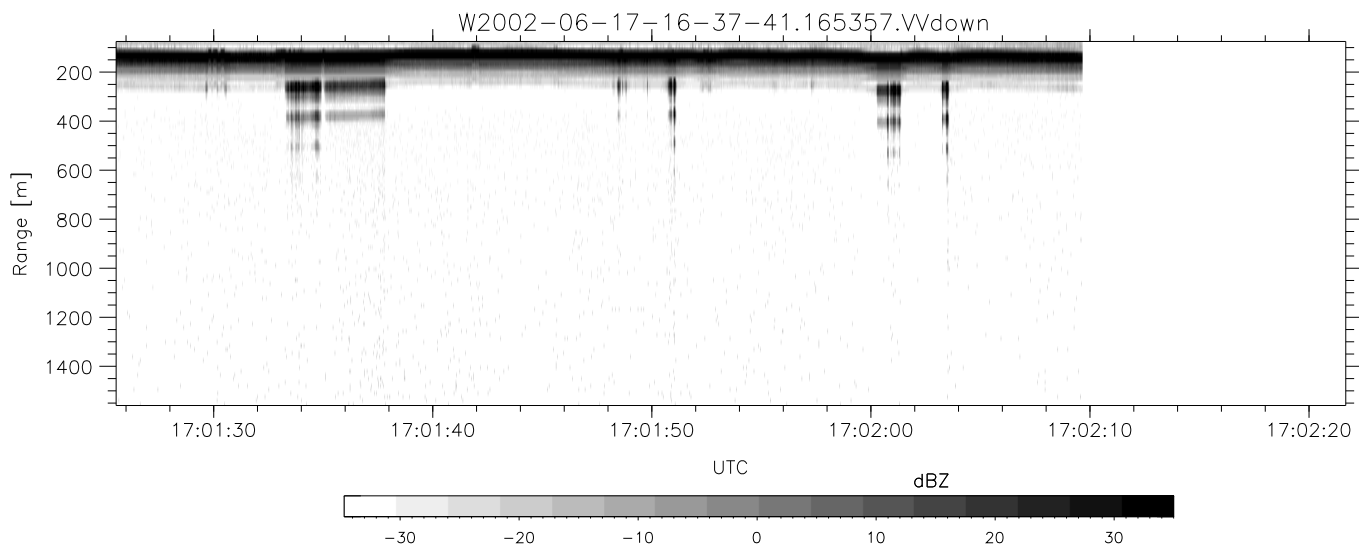
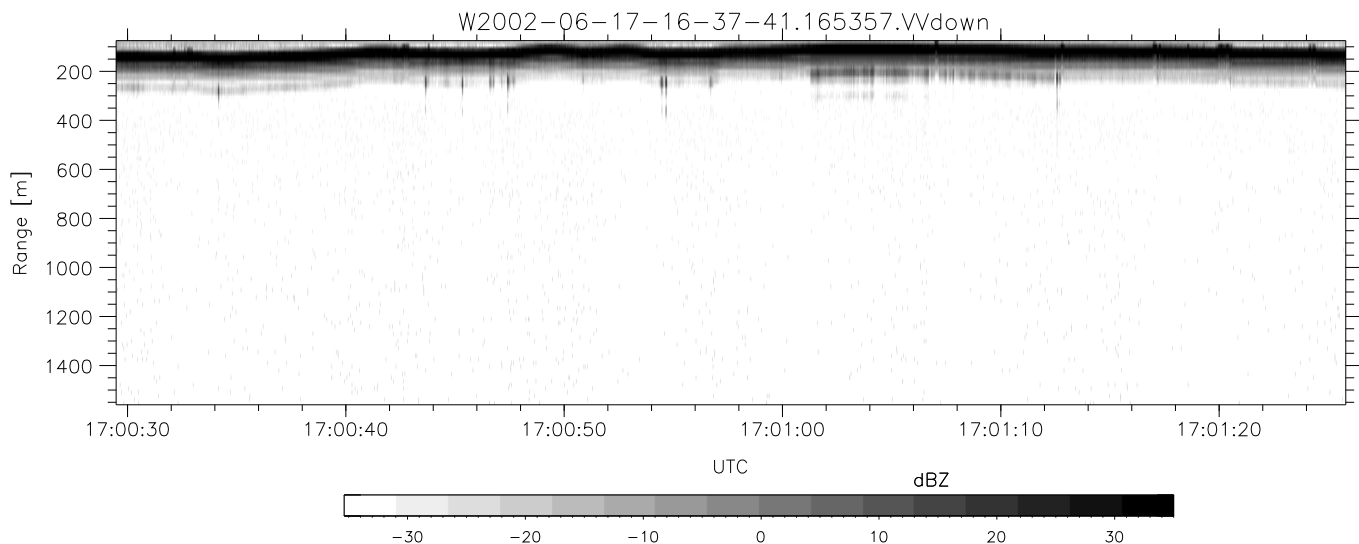
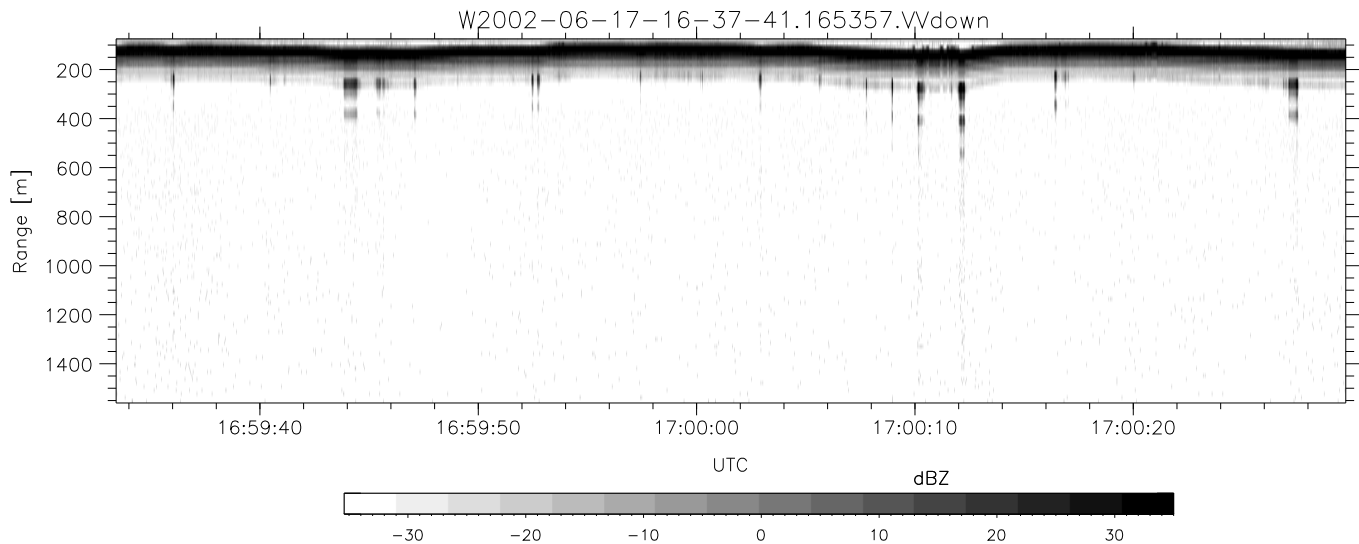
	Min	Max	Mean	Std	Varc%
hhN(dB)	-66.99	-63.81	-65.26	-75.38	9.7
vvN(dB)	-67.43	-63.50	-65.57	-75.40	10.4
hhL(dB)	-10.42	-0.85	-3.61	-8.01	36.4
vvL(dB)	-7.95	0.42	-4.17	-8.26	39.0
ppN(m/s)	-12.48	12.82	0.00	4.13	
ppT(m/s)	-98.62	101.26	0.02	32.66	
hh/vv(dB)	-NaN	47.03	10.12	29.87	9447
vh/hh(dB)	-41.27	14.55	-0.12	6.30	438.
hv/vv(dB)	-NaN	-11.07	-43.09	-31.23	1537
hnjmp(dB)	-2.11	2.22	0.17	-8.45	13.8
vnjmp(dB)	-2.14	2.24	0.15	-8.43	13.9



IHOP 2002 (dual-antenna config, modes 1,3,4,7) Data (cal: 49.0,50.0)

W2002-06-17-16-37-41 - PPMAG4
 IRIG:1,UTC: 16:37:33.07 to 17:07:08.50, Dur: 1775s
 TimeLngth: 1775.43s, TimeInt: 28ms (34.7pps)
 TimeCor=-13.0s, DSPDif(mn,min,mx):28,28,307
 PPS(min,max,std): 25,36,2.19
 Prof: 693 to 62256, NumProf(t/r): 61563/17069
 ProcTime/Recs: 16:53:57-17:02:09/34138-51206
 MxACQtime: 33ms; DRate: 194.1KB/s; Flags: 0, 0, 0
 Pulse: 275ns, IFfilt: 5.0MHz; ppPol: HH HV VV
 TxPol: HHVV, PRF: 20 10 20 10 kHz
 Range: Delay 75m, Spacing 15m, Gates 100
 Ave. Pulses: 84, Rng/Prof Aspect@90m/s: 5.8

	Min	Max	Mean	Std	Varc%
hhN(dB)	-66.99	-63.81	-65.26	-75.38	9.7
vvN(dB)	-67.43	-63.50	-65.57	-75.40	10.4
hhL(dB)	-10.42	-0.85	-3.61	-8.01	36.4
vvL(dB)	-7.95	0.42	-4.17	-8.26	39.0
ppN(m/s)	-12.48	12.82	0.00	4.13	
ppT(m/s)	-98.62	101.26	0.02	32.66	
hh/vv(dB)	-NaN	47.03	10.12	29.87	9447
vh/hh(dB)	-41.27	14.55	-0.12	6.30	438.
hv/vv(dB)	-NaN	-11.07	-43.09	-31.23	1537
hnjmp(dB)	-2.11	2.22	0.17	-8.45	13.8
vnjmp(dB)	-2.14	2.24	0.15	-8.43	13.9



IHOP 2002 (dual-antenna config, modes 1,3,4,7) Data (cal: 49.0,50.0)

W2002-06-17-16-37-41 - PPMAG4
 IRIG:1,UTC: 16:37:33.07 to 17:07:08.50, Dur: 1775s
 TimeLngth: 1775.43s, TimeInt: 28ms (34.7pps)
 TimeCor=-13.0s, DSPDif(mn,min,mx):28,28,307
 PPS(min,max,std): 25,36,2.19
 Prof: 693 to 62256, NumProf(t/r): 61563/17069
 ProcTime/Recs: 16:53:57-17:02:09/34138-51206
 MxACQtime: 33ms; DRate: 194.1KB/s; Flags: 0, 0, 0
 Pulse: 275ns, IFfilt: 5.0MHz; ppPol: HH HV VV
 TxPol: HHVV, PRF: 20 10 20 10 kHz
 Range: Delay 75m, Spacing 15m, Gates 100
 Ave. Pulses: 84, Rng/Prof Aspect@90m/s: 5.8

	Min	Max	Mean	Std	Varc%
hhN(dB)	-66.99	-63.81	-65.26	-75.38	9.7
vvN(dB)	-67.43	-63.50	-65.57	-75.40	10.4
hhL(dB)	-10.42	-0.85	-3.61	-8.01	36.4
vvL(dB)	-7.95	0.42	-4.17	-8.26	39.0
ppN(m/s)	-12.48	12.82	0.00	4.13	
ppT(m/s)	-98.62	101.26	0.02	32.66	
hh/vv(dB)	-NaN	47.03	10.12	29.87	9447
vh/hh(dB)	-41.27	14.55	-0.12	6.30	438.
hv/vv(dB)	-NaN	-11.07	-43.09	-31.23	1537
hnjmp(dB)	-2.11	2.22	0.17	-8.45	13.8
vnjmp(dB)	-2.14	2.24	0.15	-8.43	13.9