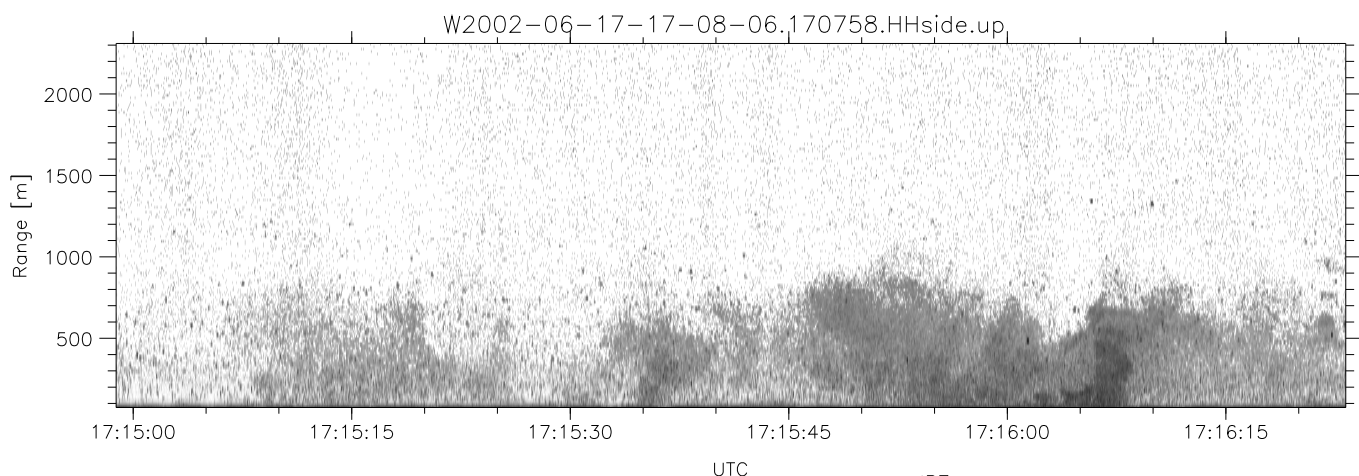
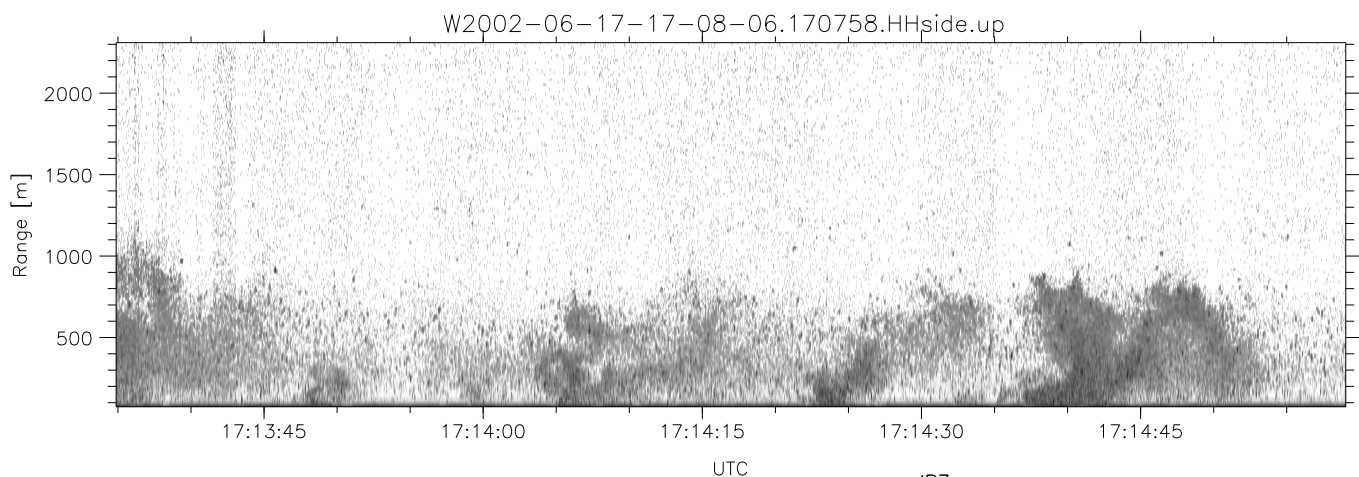
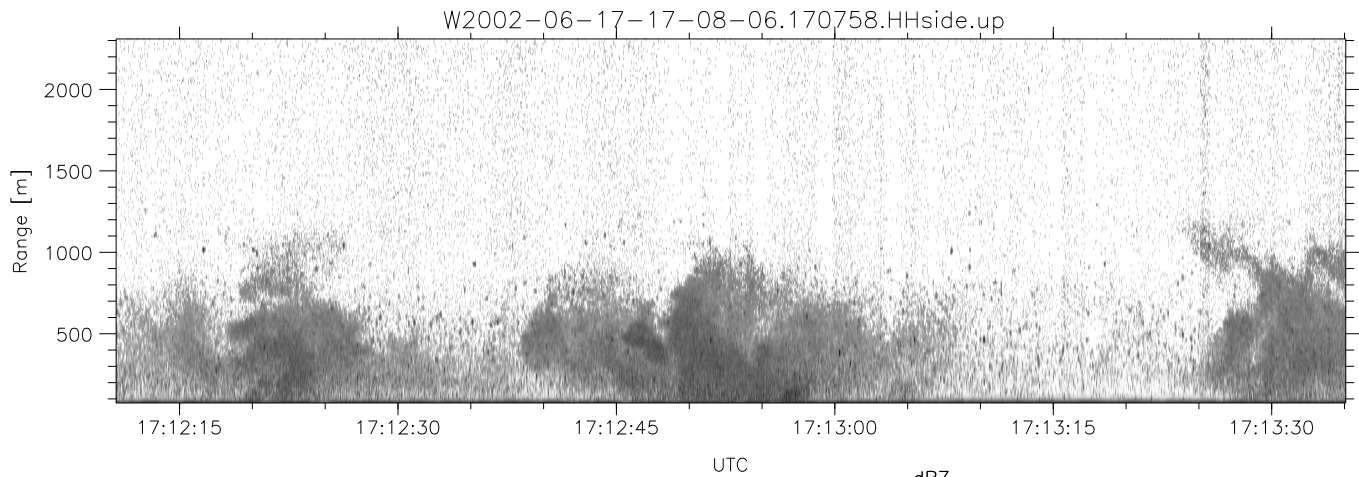


IHOP 2002 (dual-antenna config, modes 1,3,4,7) Data (cal: 49.0,50.0)

W2002-06-17-17-08-06 - SPPMAG
 IRIG:1,UTC: 17:07:58.10 to 17:17:23.45, Dur: 565s
 TimeLngth: 565.35s, TimeInt: 24ms (40.9pps)
 TimeCor=-13.0s, DSPDif(mn,min,mx):28,20,308
 PPS(min,max,std): 21,42,2.72
 Prof: 409 to 23538, NumProf(t/r): 23129/23129
 MxACQtime: 17ms; DRate: 98.0KB/s; Flags: 0, 0, 0
 Pulse: 275ns, IFfilt: 5.0MHz; ppPol: HH
 TxPol: H, PRF: 20 kHz
 Range: Delay 75m, Spacing 15m, Gates 150
 Ave. Pulses: 348, Rng/Prof Aspect@90m/s: 6.8

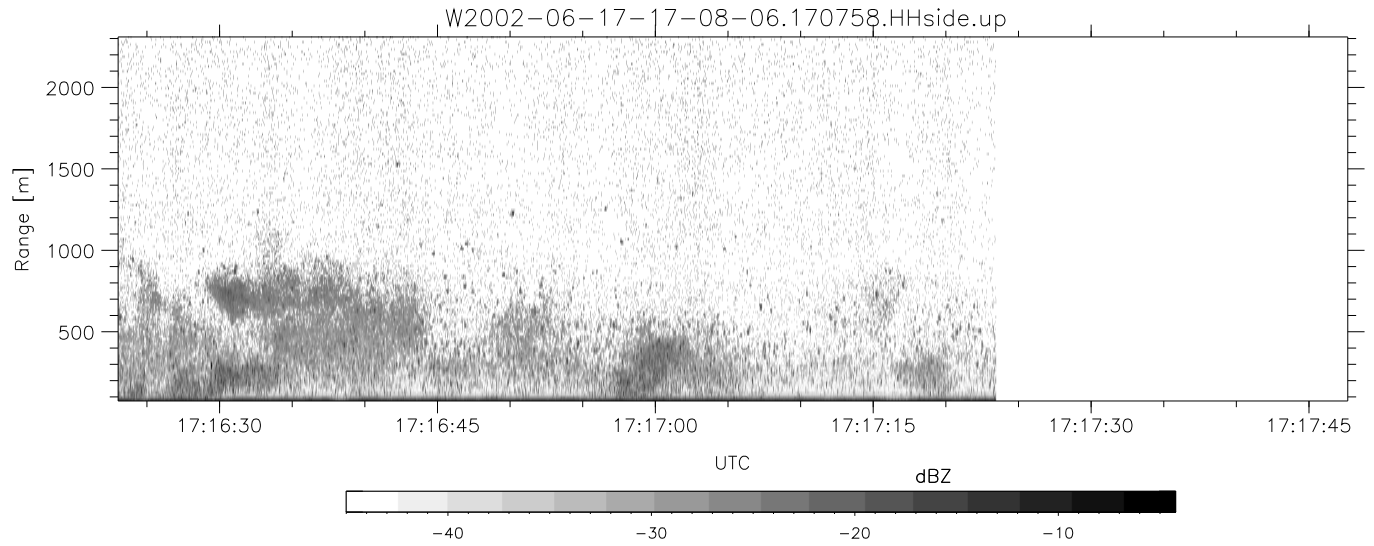
	Min	Max	Mean	Std	Varc%
hhN(dB)	-66.34	-64.35	-65.34	-78.21	5.2
vvN(dB)	-65.17	-63.24	-64.26	-77.03	5.3
hhL(dB)	-15.13	-1.32	-3.84	-8.16	37.0
vhL(dB)	-23.10	-2.73	-5.81	-9.00	48.0
ppN(m/s)	-15.80	15.80	0.17	9.15	
ppT(m/s)	-0.04	0.02	-0.00	0.01	
vh/hh(dB)	-NaN	-14.31	-26.19	-22.31	244.
hnjmp(dB)	-0.90	1.22	0.14	-11.59	6.7
vnjmp(dB)	-1.09	1.29	0.13	-11.53	6.8



IHOP 2002 (dual-antenna config, modes 1,3,4,7) Data (cal: 49.0,50.0)

W2002-06-17-17-08-06 - SPPMAG
 IRIG:1,UTC: 17:07:58.10 to 17:17:23.45, Dur: 565s
 TimeLngth: 565.35s, TimeInt: 24ms (40.9pps)
 TimeCor=-13.0s, DSPDif(mn,min,mx):28,20,308
 PPS(min,max,std): 21,42,2.72
 Prof: 409 to 23538, NumProf(t/r): 23129/23129
 MxACQtime: 17ms; DRate: 98.0KB/s; Flags: 0, 0, 0
 Pulse: 275ns, IFfilt: 5.0MHz; ppPol: HH
 TxPol: H, PRF: 20 kHz
 Range: Delay 75m, Spacing 15m, Gates 150
 Ave. Pulses: 348, Rng/Prof Aspect@90m/s: 6.8

	Min	Max	Mean	Std	Varc%
hhN(dB)	-66.34	-64.35	-65.34	-78.21	5.2
vvN(dB)	-65.17	-63.24	-64.26	-77.03	5.3
hhL(dB)	-15.13	-1.32	-3.84	-8.16	37.0
vhL(dB)	-23.10	-2.73	-5.81	-9.00	48.0
ppN(m/s)	-15.80	15.80	0.17	9.15	
ppT(m/s)	-0.04	0.02	-0.00	0.01	
vh/hh(dB)	-NaN	-14.31	-26.19	-22.31	244.
hnjmp(dB)	-0.90	1.22	0.14	-11.59	6.7
vnjmp(dB)	-1.09	1.29	0.13	-11.53	6.8



IHOP 2002 (dual-antenna config, modes 1,3,4,7) Data (cal: 49.0,50.0)

W2002-06-17-17-08-06 - SPPMAG
 IRIG:1,UTC: 17:07:58.10 to 17:17:23.45, Dur: 565s
 TimeLngth: 565.35s, TimeInt: 24ms (40.9pps)
 TimeCor=-13.0s, DSPDif(mn,min,mx):28,20,308
 PPS(min,max,std): 21,42,2.72
 Prof: 409 to 23538, NumProf(t/r): 23129/23129
 MxACQtime: 17ms; DRate: 98.0KB/s; Flags: 0, 0, 0
 Pulse: 275ns, IFfilt: 5.0MHz; ppPol: HH
 TxPol: H, PRF: 20 kHz
 Range: Delay 75m, Spacing 15m, Gates 150
 Ave. Pulses: 348, Rng/Prof Aspect@90m/s: 6.8

	Min	Max	Mean	Std	Varc%
hhN(dB)	-66.34	-64.35	-65.34	-78.21	5.2
vvN(dB)	-65.17	-63.24	-64.26	-77.03	5.3
hhL(dB)	-15.13	-1.32	-3.84	-8.16	37.0
vhL(dB)	-23.10	-2.73	-5.81	-9.00	48.0
ppN(m/s)	-15.80	15.80	0.17	9.15	
ppT(m/s)	-0.04	0.02	-0.00	0.01	
vh/hh(dB)	-NaN	-14.31	-26.19	-22.31	244.
hnjmp(dB)	-0.90	1.22	0.14	-11.59	6.7
vnjmp(dB)	-1.09	1.29	0.13	-11.53	6.8