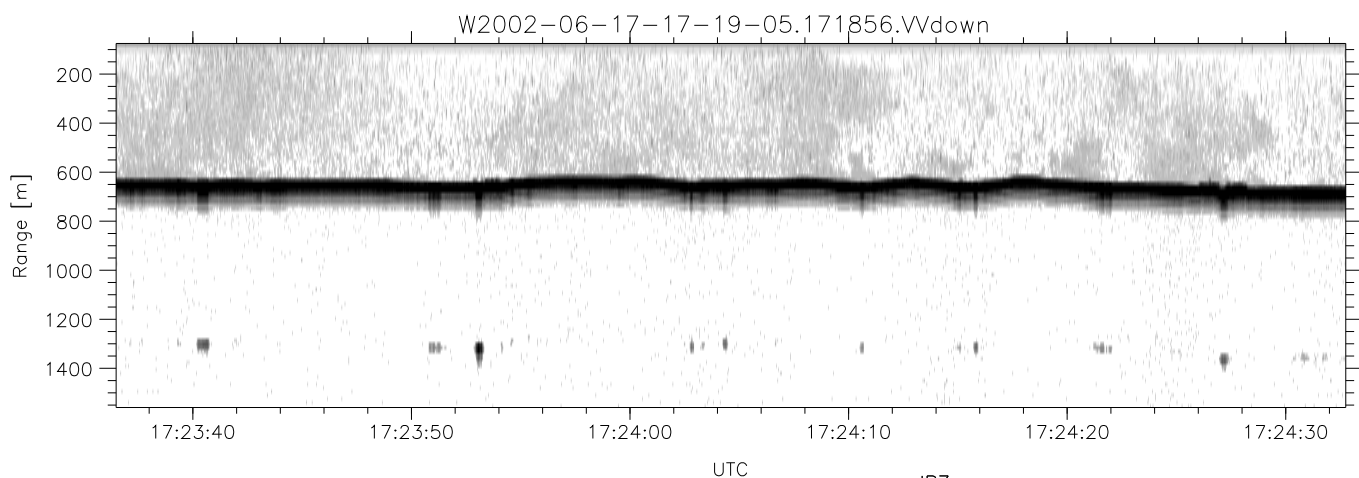
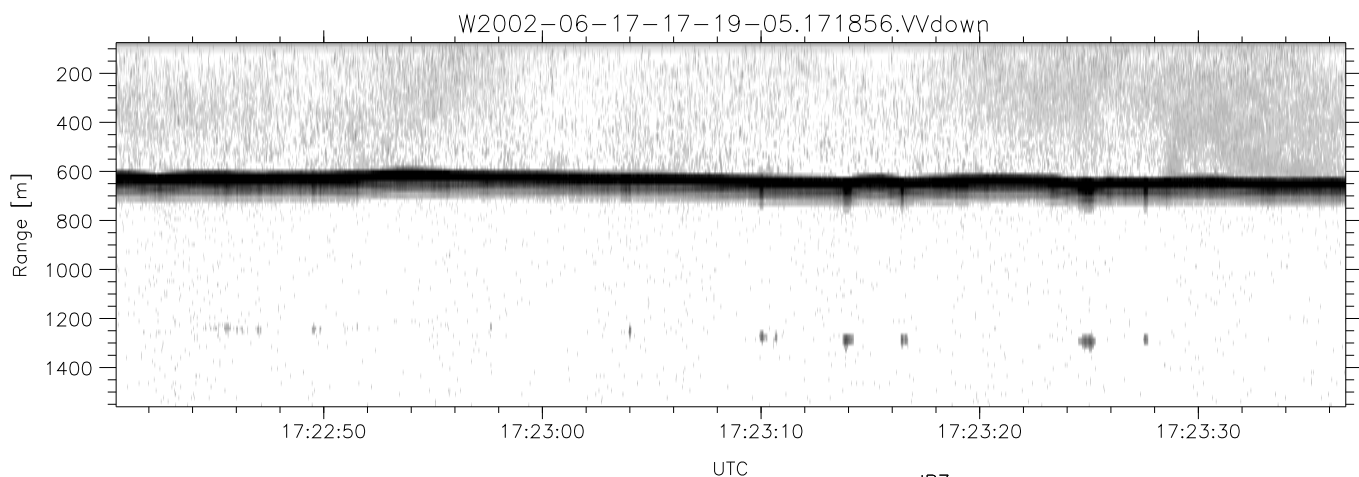
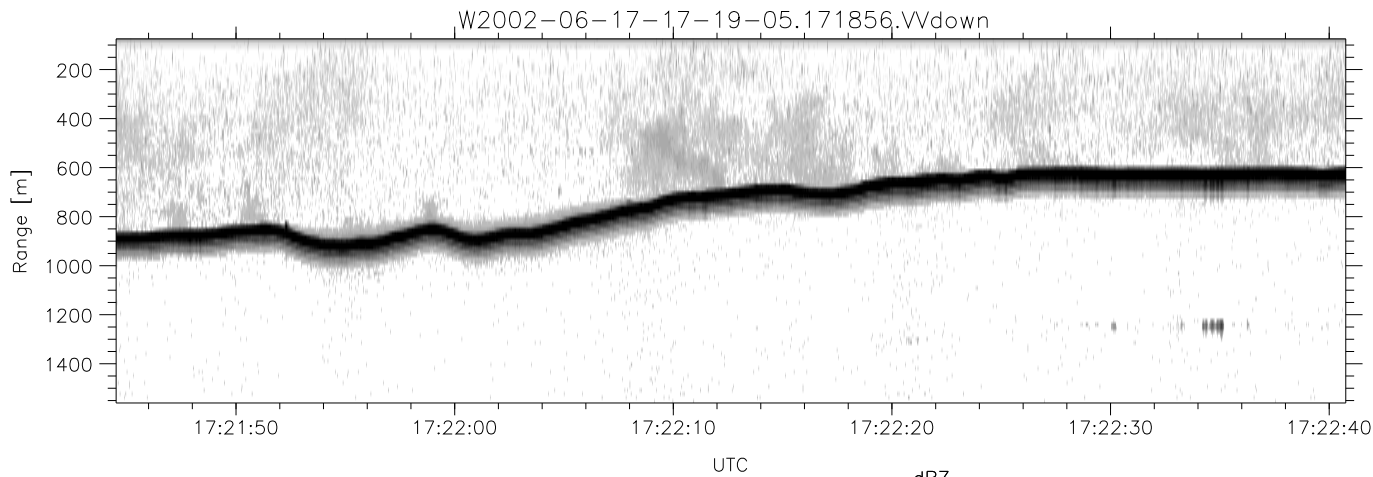


IHOP 2002 (dual-antenna config, modes 1,3,4,7) Data (cal: 49.0,50.0)

W2002-06-17-17-19-05 - PPMAG4  
 IRIG:1,UTC: 17:18:56.65 to 17:32:32.17, Dur: 816s  
 TimeLngth: 815.53s, TimeInt: 28ms (34.6pps)  
 TimeCor=-13.0s, DSPDif(mn,min,mx):29,28,317  
 PPS(min,max,std): 25,36,2.16  
 Prof: 2409 to 30618, NumProf(t/r): 28209/17069  
 ProcTime/Recs: 17:18:56-17:27:09/0-17068  
 MxACQtime: 33ms; DRate: 193.6KB/s; Flags: 0, 0, 0  
 Pulse: 275ns, IFilt: 5.0MHz; ppPol: HH HV VV  
 TxPol: HHVV, PRF: 20 10 20 10 kHz  
 Range: Delay 75m, Spacing 15m, Gates 100  
 Ave. Pulses: 84, Rng/Prof Aspect@90m/s: 5.8

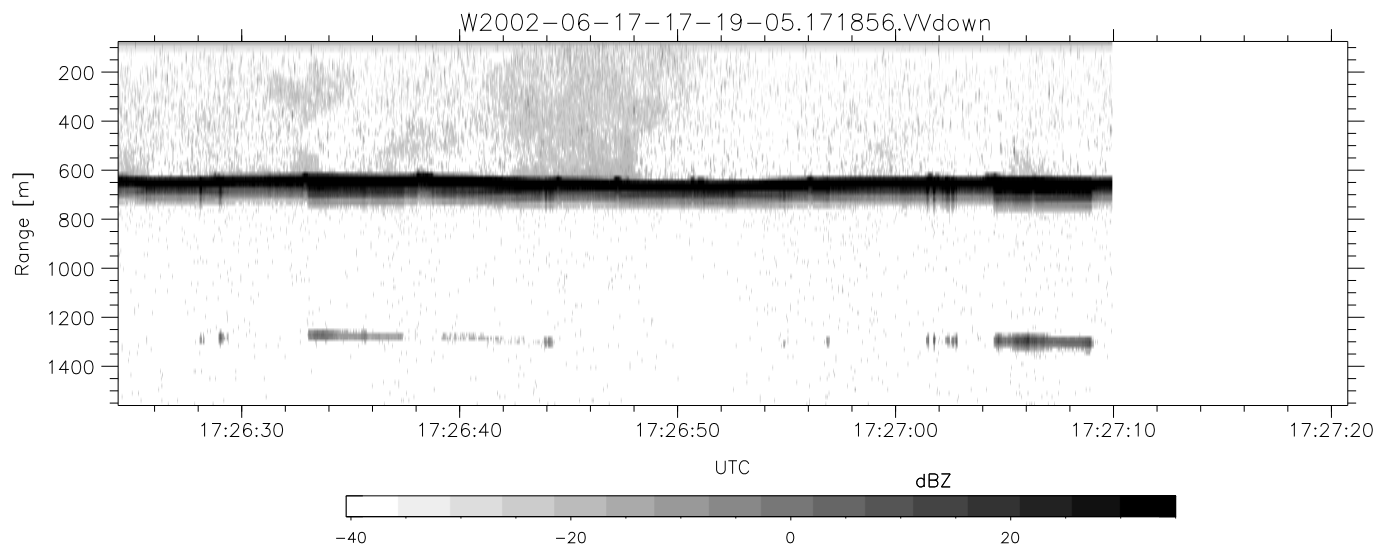
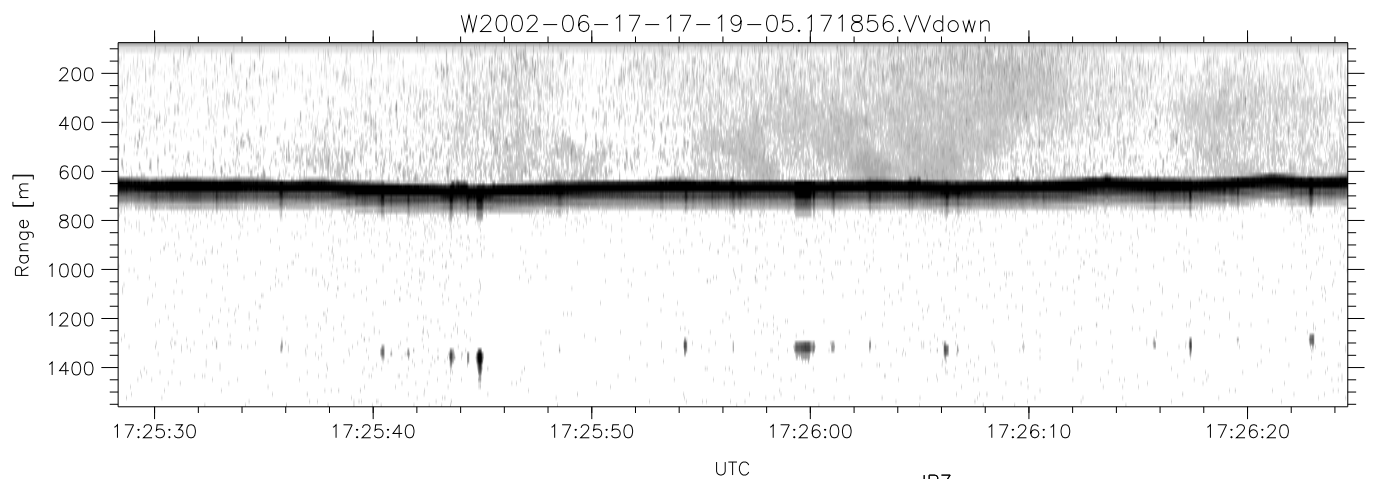
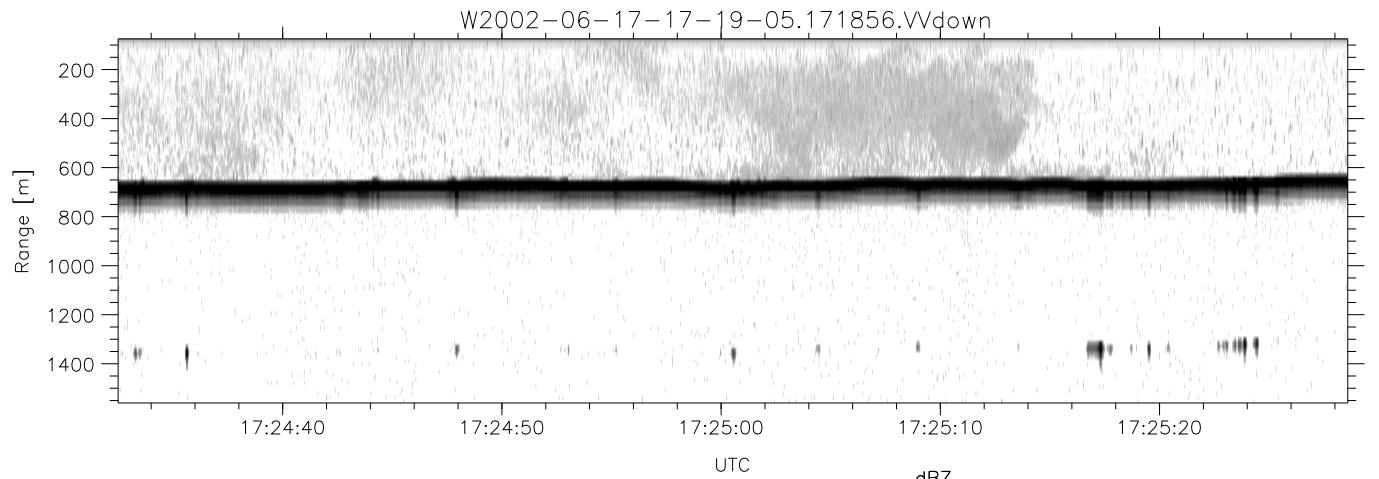
	Min	Max	Mean	Std	Varc%
hhN(dB)	-67.42	-63.82	-65.52	-75.64	9.7
vvN(dB)	-66.18	-62.56	-64.35	-74.36	10.0
hhL(dB)	-16.95	-2.28	-4.69	-8.63	40.3
vvL(dB)	-4.23	0.51	-0.79	-9.78	12.6
ppN(m/s)	-12.08	12.28	0.04	4.15	
ppT(m/s)	-95.40	97.00	0.30	32.75	
hh/vv(dB)	-NaN	42.40	14.29	28.64	2721
vh/hh(dB)	-46.17	-27.55	-31.72	-32.83	77.4
hv/vv(dB)	-NaN	-30.57	-53.74	-45.46	673.
hnjmp(dB)	-2.03	2.57	0.15	-8.46	13.8
vnjmp(dB)	-2.44	2.53	0.17	-8.37	14.0



IHOP 2002 (dual-antenna config, modes 1,3,4,7) Data (cal: 49.0,50.0)

W2002-06-17-17-19-05 - PPMAG4  
 IRIG:1,UTC: 17:18:56.65 to 17:32:32.17, Dur: 816s  
 TimeLngth: 815.53s, TimeInt: 28ms (34.6pps)  
 TimeCor=-13.0s, DSPDif(mn,min,mx):29,28,317  
 PPS(min,max,std): 25,36,2.16  
 Prof: 2409 to 30618, NumProf(t/r): 28209/17069  
 ProcTime/Recs: 17:18:56-17:27:09/0-17068  
 MxAcQtime: 33ms; DRate: 193.6KB/s; Flags: 0, 0, 0  
 Pulse: 275ns, IFfilt: 5.0MHz; ppPol: HH HV VV  
 TxPol: HHVV, PRF: 20 10 20 10 kHz  
 Range: Delay 75m, Spacing 15m, Gates 100  
 Ave. Pulses: 84, Rng/Prof Aspect@90m/s: 5.8

	Min	Max	Mean	Std	Varc%
hhN(dB)	-67.42	-63.82	-65.52	-75.64	9.7
vvN(dB)	-66.18	-62.56	-64.35	-74.36	10.0
hhL(dB)	-16.95	-2.28	-4.69	-8.63	40.3
vvL(dB)	-4.23	0.51	-0.79	-9.78	12.6
ppN(m/s)	-12.08	12.28	0.04	4.15	
ppT(m/s)	-95.40	97.00	0.30	32.75	
hh/vv(dB)	-NaN	42.40	14.29	28.64	2721
vh/hh(dB)	-46.17	-27.55	-31.72	-32.83	77.4
hv/vv(dB)	-NaN	-30.57	-53.74	-45.46	673.
hnjmp(dB)	-2.03	2.57	0.15	-8.46	13.8
vnjmp(dB)	-2.44	2.53	0.17	-8.37	14.0



IHOP 2002 (dual-antenna config, modes 1,3,4,7) Data (cal: 49.0,50.0)

W2002-06-17-17-19-05 - PPMAG4  
 IRIG:1,UTC: 17:18:56.65 to 17:32:32.17, Dur: 816s  
 TimeLngth: 815.53s, TimeInt: 28ms (34.6pps)  
 TimeCor=-13.0s, DSPDif(mn,min,mx):29,28,317  
 PPS(min,max,std): 25,36,2.16  
 Prof: 2409 to 30618, NumProf(t/r): 28209/17069  
 ProcTime/Recs: 17:18:56-17:27:09/0-17068  
 MxACQtime: 33ms; DRate: 193.6KB/s; Flags: 0, 0, 0  
 Pulse: 275ns, IFilt: 5.0MHz; ppPol: HH HV VV  
 TxPol: HHVV, PRF: 20 10 20 10 kHz  
 Range: Delay 75m, Spacing 15m, Gates 100  
 Ave. Pulses: 84, Rng/Prof Aspect@90m/s: 5.8

	Min	Max	Mean	Std	Varc%
hhN(dB)	-67.42	-63.82	-65.52	-75.64	9.7
vvN(dB)	-66.18	-62.56	-64.35	-74.36	10.0
hhL(dB)	-16.95	-2.28	-4.69	-8.63	40.3
vvL(dB)	-4.23	0.51	-0.79	-9.78	12.6
ppN(m/s)	-12.08	12.28	0.04	4.15	
ppT(m/s)	-95.40	97.00	0.30	32.75	
hh/vv(dB)	-NaN	42.40	14.29	28.64	2721
vh/hh(dB)	-46.17	-27.55	-31.72	-32.83	77.4
hv/vv(dB)	-NaN	-30.57	-53.74	-45.46	673.
hnjmp(dB)	-2.03	2.57	0.15	-8.46	13.8
vnjmp(dB)	-2.44	2.53	0.17	-8.37	14.0