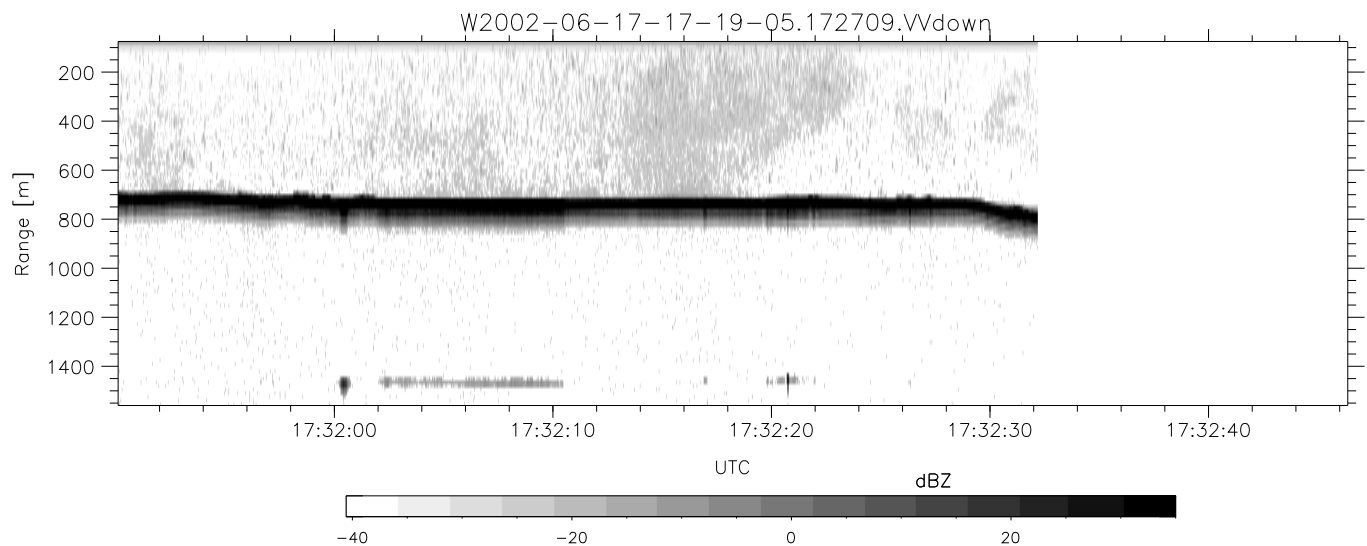
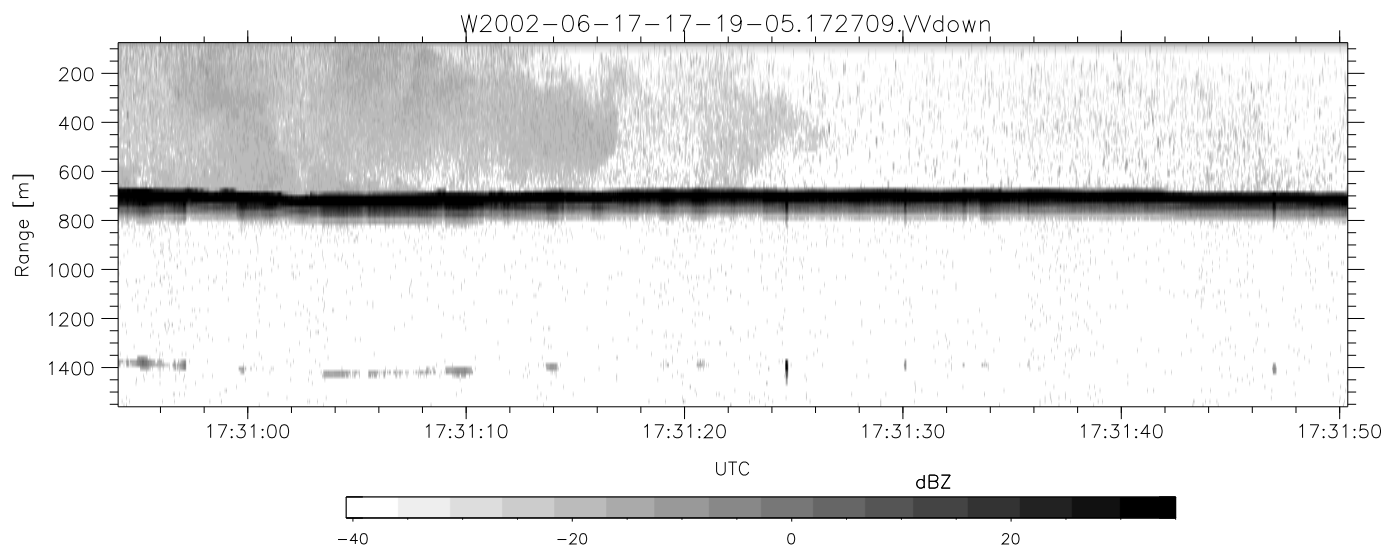
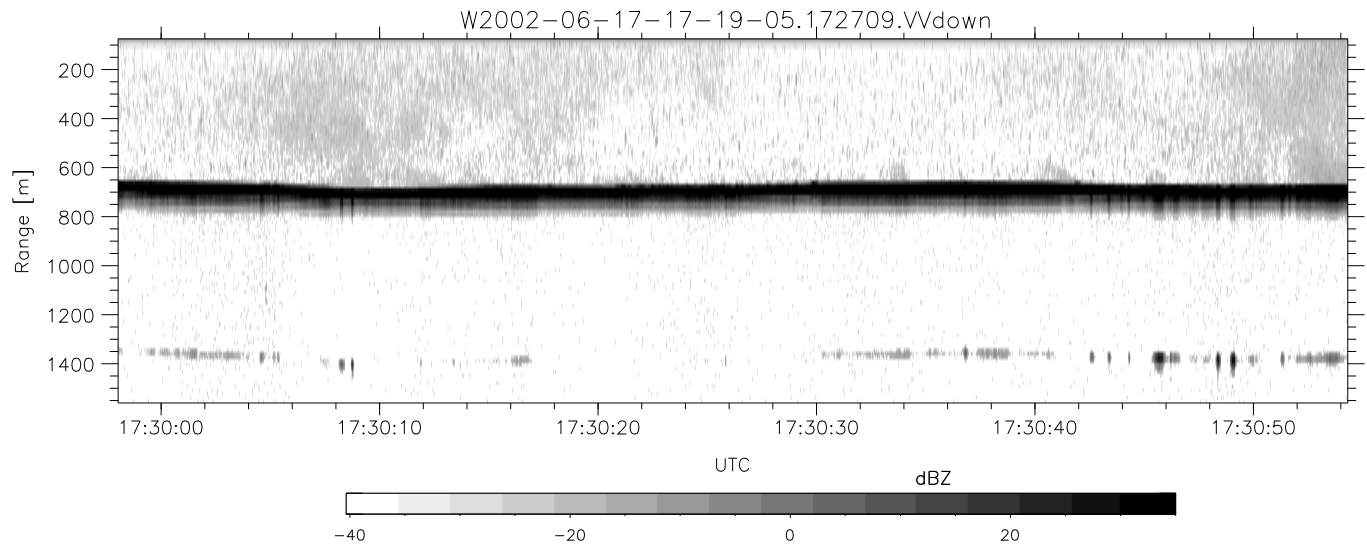


IHOP 2002 (dual-antenna config, modes 1,3,4,7) Data (cal: 49.0,50.0)

W2002-06-17-17-19-05 - PPMAG4
 IRIG:1,UTC: 17:18:56.65 to 17:32:32.17, Dur: 816s
 TimeLngth: 815.53s, TimeInt: 28ms (34.6pps)
 TimeCor=-13.0s, DSPDif(mn,min,mx):28,28,316
 PPS(min,max,std): 25,36,2.24
 Prof: 2409 to 30618, NumProf(t/r): 28209/11140
 ProcTime/Recs: 17:27:09-17:32:32/17069-28208
 MxACQtime: 33ms; DRate: 193.6KB/s; Flags: 0, 0, 0
 Pulse: 275ns, IFilt: 5.0MHz; ppPol: HH HV VV
 TxPol: HHVV, PRF: 20 10 20 10 kHz
 Range: Delay 75m, Spacing 15m, Gates 100
 Ave. Pulses: 84, Rng/Prof Aspect@90m/s: 5.8

	Min	Max	Mean	Std	Varc%
hhN(dB)	-67.23	-63.98	-65.54	-75.68	9.7
vvN(dB)	-66.51	-62.56	-64.40	-74.45	9.9
hhL(dB)	-9.30	-2.58	-4.26	-12.94	13.5
vvL(dB)	-3.37	0.19	-0.70	-12.16	7.1
ppN(m/s)	-12.02	11.87	-0.03	4.13	
ppT(m/s)	-94.97	93.80	-0.24	32.65	
hh/vv(dB)	-NaN	41.45	12.49	23.57	1283
vh/hh(dB)	-NaN	-30.08	-34.67	-35.09	90.7
hv/vv(dB)	-NaN	-34.54	-53.79	-45.62	655.
hnjmp(dB)	-2.42	1.92	-0.07	-8.70	13.7
vnjmp(dB)	-2.25	2.22	-0.07	-8.63	13.9



IHOP 2002 (dual-antenna config, modes 1,3,4,7) Data (cal: 49.0,50.0)

W2002-06-17-17-19-05 - PPMAG4
 IRIG:1,UTC: 17:18:56.65 to 17:32:32.17, Dur: 816s
 TimeLngth: 815.53s, TimeInt: 28ms (34.6pps)
 TimeCor=-13.0s, DSPDif(mn,min,mx):28,28,316
 PPS(min,max,std): 25,36,2.24
 Prof: 2409 to 30618, NumProf(t/r): 28209/11140
 ProcTime/Recs: 17:27:09-17:32:32/17069-28208
 MxACQtime: 33ms; DRate: 193.6KB/s; Flags: 0, 0, 0
 Pulse: 275ns, IFilt: 5.0MHz; ppPol: HH HV VV
 TxPol: HHVV, PRF: 20 10 20 10 kHz
 Range: Delay 75m, Spacing 15m, Gates 100
 Ave. Pulses: 84, Rng/Prof Aspect@90m/s: 5.8

	Min	Max	Mean	Std	Varc%
hhN(dB)	-67.23	-63.98	-65.54	-75.68	9.7
vvN(dB)	-66.51	-62.56	-64.40	-74.45	9.9
hhL(dB)	-9.30	-2.58	-4.26	-12.94	13.5
vvL(dB)	-3.37	0.19	-0.70	-12.16	7.1
ppN(m/s)	-12.02	11.87	-0.03	4.13	
ppT(m/s)	-94.97	93.80	-0.24	32.65	
hh/vv(dB)	-NaN	41.45	12.49	23.57	1283
vh/hh(dB)	-NaN	-30.08	-34.67	-35.09	90.7
hv/vv(dB)	-NaN	-34.54	-53.79	-45.62	655.5
hnjmp(dB)	-2.42	1.92	-0.07	-8.70	13.7
vnjmp(dB)	-2.25	2.22	-0.07	-8.63	13.9