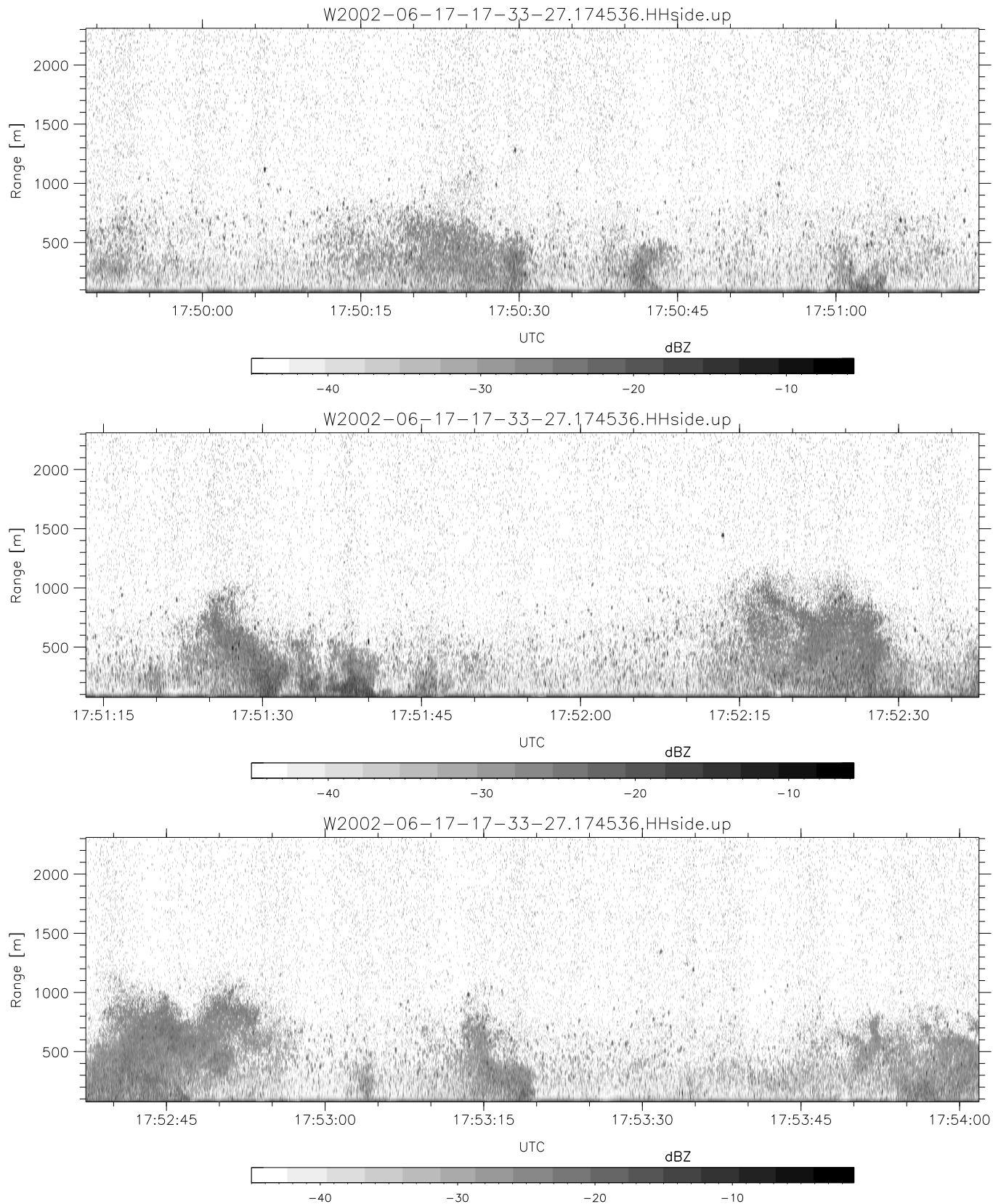


IHOP 2002 (dual-antenna config, modes 1,3,4,7) Data (cal: 49.0,50.0)

W2002-06-17-17-33-27 - SPPMAG
 IRIG:1,UTC: 17:33:19.14 to 17:55:15.15, Dur: 1316s
 TimeLngth: 1316.01s, TimeInt: 24ms (40.8pps)
 TimeCor=-13.0s, DSPDif(mn,min,mx):25,20,346
 PPS(min,max,std): 29,42,2.70
 Prof: 483 to 54238, NumProf(t/r): 53755/23633
 ProcTime/Recs: 17:45:36-17:55:15/30122-53754
 MxACQtime: 17ms; DRate: 97.8KB/s; Flags: 0, 0, 0
 Pulse: 275ns, IFfilt: 5.0MHz; ppPol: HH
 TxPol: H, PRF: 20 kHz
 Range: Delay 75m, Spacing 15m, Gates 150
 Ave. Pulses: 348, Rng/Prof Aspect@90m/s: 6.8

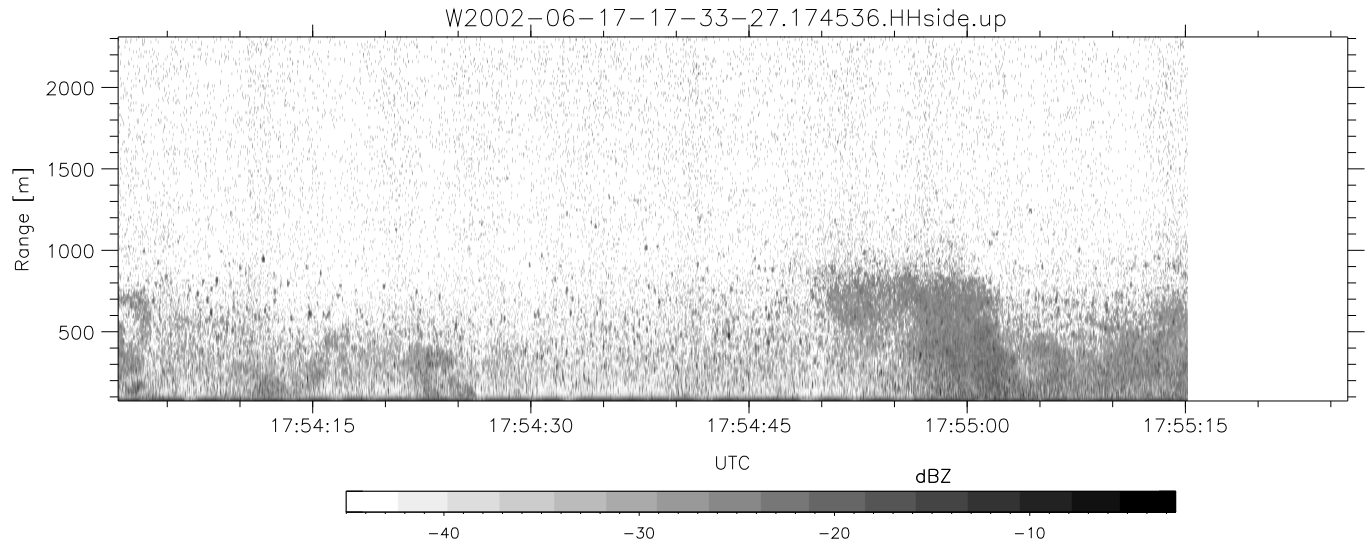
	Min	Max	Mean	Std	Varc%
hhN(dB)	-66.45	-64.75	-65.62	-78.63	5.0
vvN(dB)	-65.37	-63.62	-64.50	-77.55	4.9
hhL(dB)	-13.96	-2.52	-5.48	-9.08	43.7
vhL(dB)	-25.03	-3.19	-6.61	-9.54	50.9
ppN(m/s)	-15.80	15.80	-0.01	9.12	
ppT(m/s)	-0.05	0.03	-0.00	0.01	
vh/hh(dB)	-NaN	-5.74	-19.92	-14.06	385.
hnjmp(dB)	-0.90	1.21	0.13	-11.56	6.8
vnjmp(dB)	-0.94	1.29	0.13	-11.62	6.7



IHOP 2002 (dual-antenna config, modes 1,3,4,7) Data (cal: 49.0,50.0)

W2002-06-17-17-33-27 - SPPMAG
 IRIG:1,UTC: 17:33:19.14 to 17:55:15.15, Dur: 1316s
 TimeLngth: 1316.01s, TimeInt: 24ms (40.8pps)
 TimeCor=-13.0s, DSPDif(mn,min,mx):25,20,346
 PPS(min,max,std): 29,42,2.70
 Prof: 483 to 54238, NumProf(t/r): 53755/23633
 ProcTime/Recs: 17:45:36-17:55:15/30122-53754
 MxACQtime: 17ms; DRate: 97.8KB/s; Flags: 0, 0, 0
 Pulse: 275ns, IFfilt: 5.0MHz; ppPol: HH
 TxPol: H, PRF: 20 kHz
 Range: Delay 75m, Spacing 15m, Gates 150
 Ave. Pulses: 348, Rng/Prof Aspect@90m/s: 6.8

	Min	Max	Mean	Std	Varc%
hhN(dB)	-66.45	-64.75	-65.62	-78.63	5.0
vvN(dB)	-65.37	-63.62	-64.50	-77.55	4.9
hhL(dB)	-13.96	-2.52	-5.48	-9.08	43.7
vhL(dB)	-25.03	-3.19	-6.61	-9.54	50.9
ppN(m/s)	-15.80	15.80	-0.01	9.12	
ppT(m/s)	-0.05	0.03	-0.00	0.01	
vh/hh(dB)	-NaN	-5.74	-19.92	-14.06	385.
hnjmp(dB)	-0.90	1.21	0.13	-11.56	6.8
vnjmp(dB)	-0.94	1.29	0.13	-11.62	6.7



IHOP 2002 (dual-antenna config, modes 1,3,4,7) Data (cal: 49.0,50.0)

W2002-06-17-17-33-27 - SPPMAG
 IRIG:1,UTC: 17:33:19.14 to 17:55:15.15, Dur: 1316s
 TimeLngth: 1316.01s, TimeInt: 24ms (40.8pps)
 TimeCor=-13.0s, DSPDif(mn,min,mx):25,20,346
 PPS(min,max,std): 29,42,2.70
 Prof: 483 to 54238, NumProf(t/r): 53755/23633
 ProcTime/Recs: 17:45:36-17:55:15/30122-53754
 MxACQtime: 17ms; DRate: 97.8KB/s; Flags: 0, 0, 0
 Pulse: 275ns, IFfilt: 5.0MHz; ppPol: HH
 TxPol: H, PRF: 20 kHz
 Range: Delay 75m, Spacing 15m, Gates 150
 Ave. Pulses: 348, Rng/Prof Aspect@90m/s: 6.8

	Min	Max	Mean	Std	Varc%
hhN(dB)	-66.45	-64.75	-65.62	-78.63	5.0
vvN(dB)	-65.37	-63.62	-64.50	-77.55	4.9
hhL(dB)	-13.96	-2.52	-5.48	-9.08	43.7
vhL(dB)	-25.03	-3.19	-6.61	-9.54	50.9
ppN(m/s)	-15.80	15.80	-0.01	9.12	
ppT(m/s)	-0.05	0.03	-0.00	0.01	
vh/hh(dB)	-NaN	-5.74	-19.92	-14.06	385.
hnjmp(dB)	-0.90	1.21	0.13	-11.56	6.8
vnjmp(dB)	-0.94	1.29	0.13	-11.62	6.7