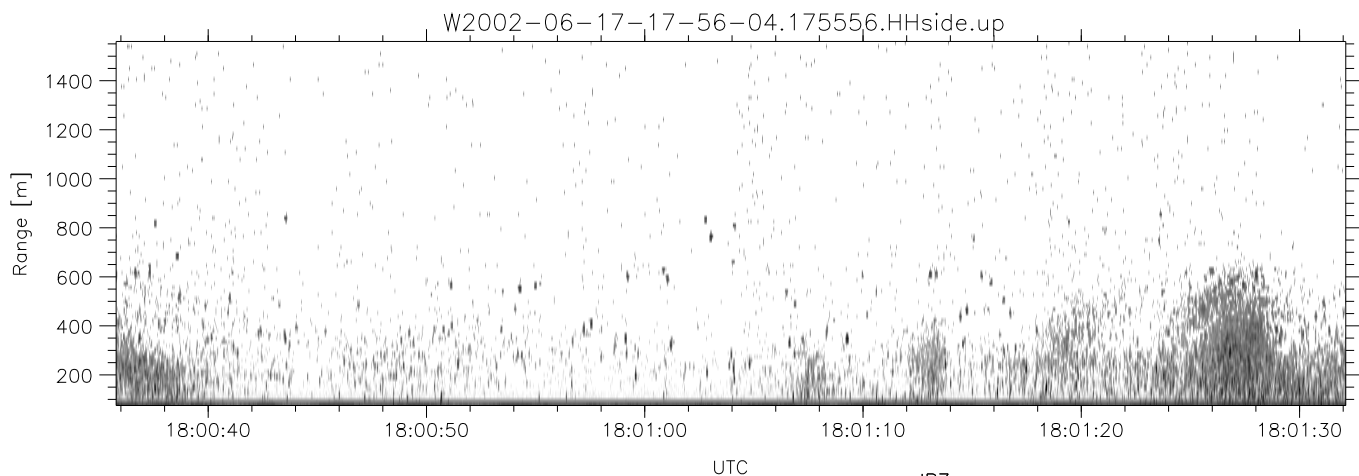
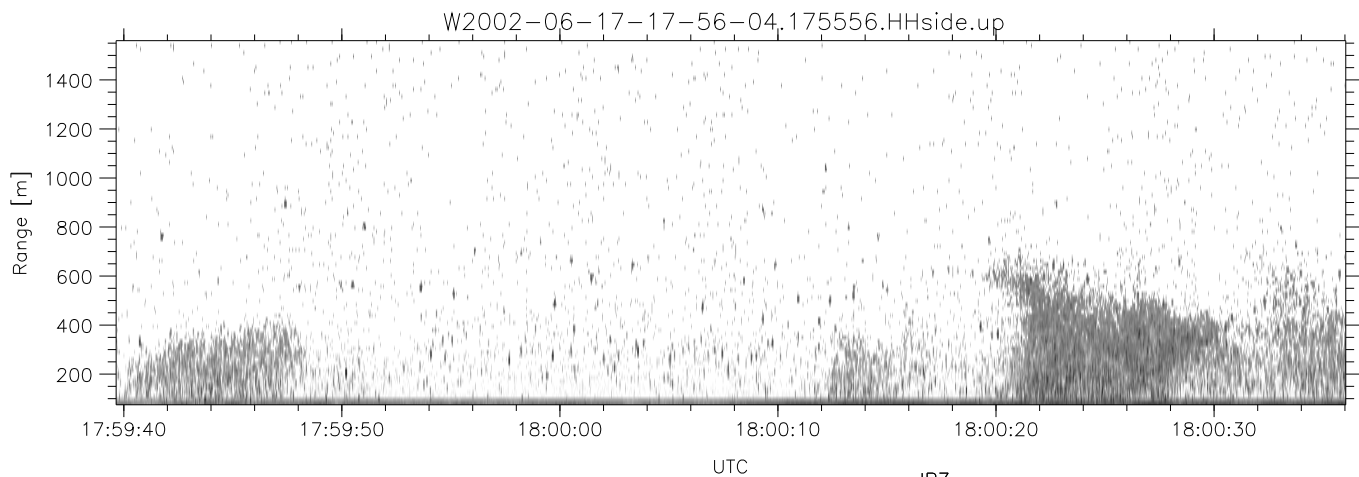
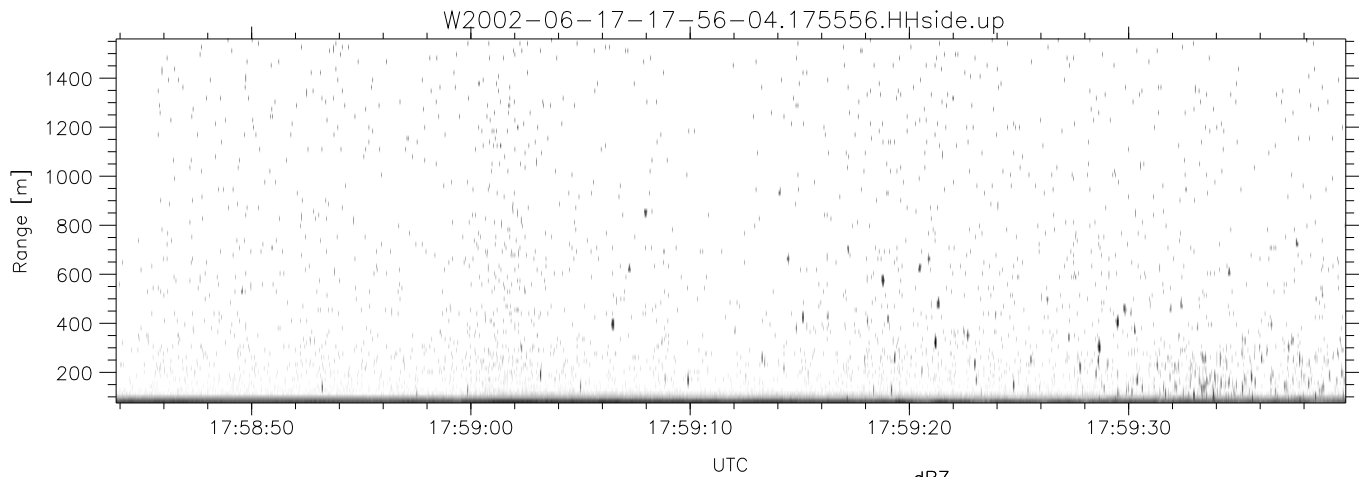


IHOP 2002 (dual-antenna config, modes 1,3,4,7) Data (cal: 49.0,50.0)

W2002-06-17-17-56-04 - PPMAG4
 IRIG:1,UTC: 17:55:56.20 to 18:08:55.14, Dur: 779s
 TimeLngth: 778.94s, TimeInt: 29ms (34.4pps)
 TimeCor=-13.0s, DSPDif(mn,min,mx):28,28,318
 PPS(min,max,std): 13,36,2.36
 Prof: 423 to 27244, NumProf(t/r): 26821/17069
 ProcTime/Recs: 17:55:56-18:04:11/0-17068
 MxACQtime: 33ms; DRate: 192.7KB/s; Flags: 0, 0, 0
 Pulse: 275ns, IFfilt: 5.0MHz; ppPol: HH HV VV
 TxPol: HHVV, PRF: 20 10 20 10 kHz
 Range: Delay 75m, Spacing 15m, Gates 100
 Ave. Pulses: 84, Rng/Prof Aspect@90m/s: 5.7

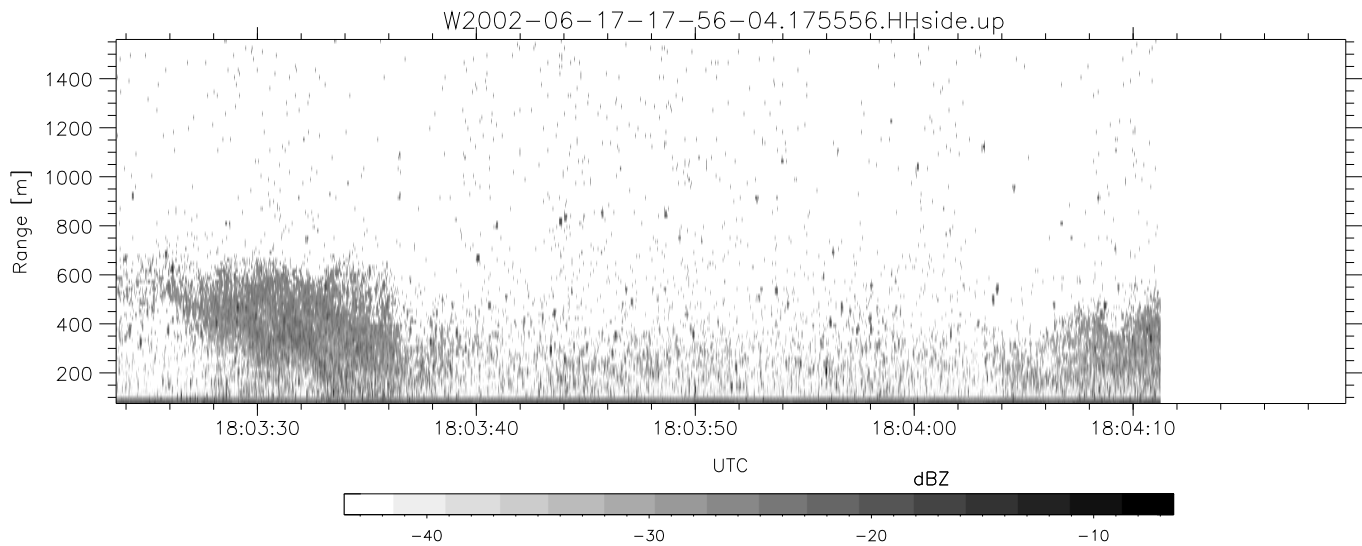
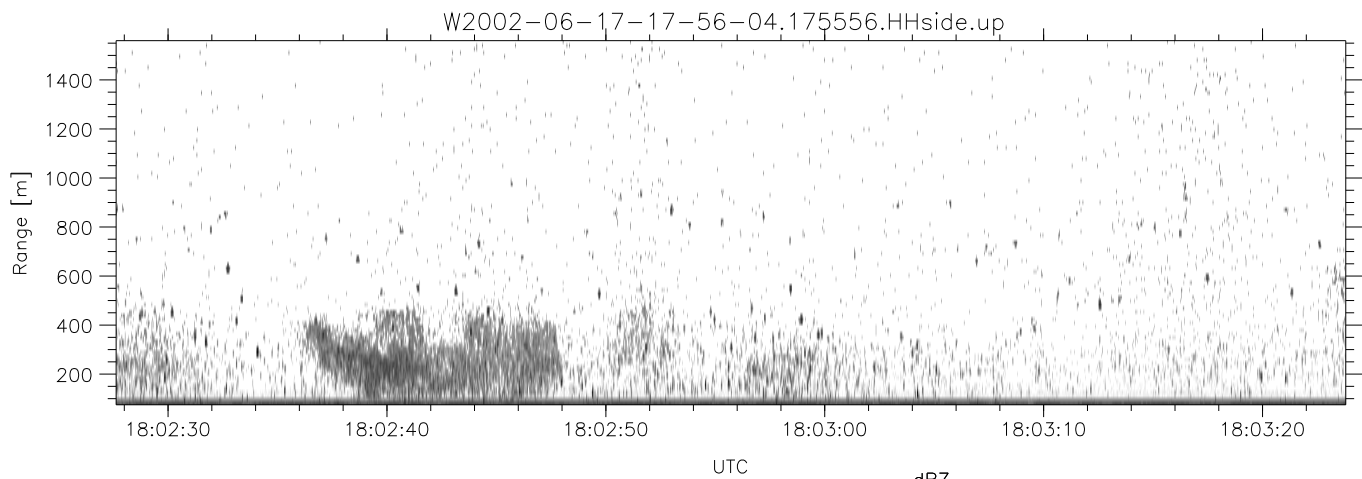
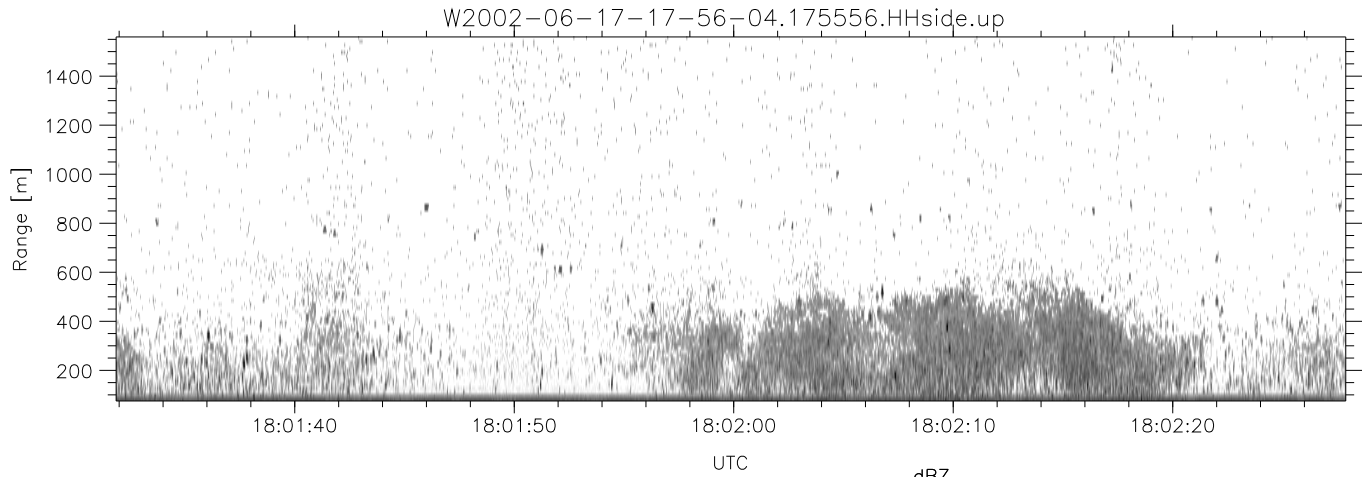
	Min	Max	Mean	Std	Varc%
hhN(dB)	-67.38	-64.21	-65.73	-75.84	9.7
vvN(dB)	-66.37	-62.98	-64.57	-74.57	10.0
hhL(dB)	-16.81	-3.23	-6.43	-9.97	44.3
vvL(dB)	-6.02	1.44	-0.63	-7.96	18.5
ppN(m/s)	-12.07	12.49	-0.08	4.15	
ppT(m/s)	-95.33	98.69	-0.62	32.79	
hh/vv(dB)	-NaN	48.82	-NaN	43.62	-127
vh/hh(dB)	-NaN	-30.94	-35.46	-34.05	138.
hv/vv(dB)	-NaN	-33.84	-55.09	-45.82	845.
hh_jmp(dB)	-2.07	2.39	0.15	-8.45	13.8
vv_jmp(dB)	-2.77	2.79	0.16	-8.34	14.1



IHOP 2002 (dual-antenna config, modes 1,3,4,7) Data (cal: 49.0,50.0)

W2002-06-17-17-56-04 - PPMAG4
 IRIG:1,UTC: 17:55:56.20 to 18:08:55.14, Dur: 779s
 TimeLngth: 778.94s, TimeInt: 29ms (34.4pps)
 TimeCor=-13.0s, DSPDif(mn,min,mx):28,28,318
 PPS(min,max,std): 13,36,2.36
 Prof: 423 to 27244, NumProf(t/r): 26821/17069
 ProcTime/Recs: 17:55:56-18:04:11/0-17068
 MxACQtime: 33ms; DRate: 192.7KB/s; Flags: 0, 0, 0
 Pulse: 275ns, IFilt: 5.0MHz; ppPol: HH HV VV
 TxPol: HHVV, PRF: 20 10 20 10 kHz
 Range: Delay 75m, Spacing 15m, Gates 100
 Ave. Pulses: 84, Rng/Prof Aspect@90m/s: 5.7

	Min	Max	Mean	Std	Varc%
hhN(dB)	-67.38	-64.21	-65.73	-75.84	9.7
vvN(dB)	-66.37	-62.98	-64.57	-74.57	10.0
hhL(dB)	-16.81	-3.23	-6.43	-9.97	44.3
vvL(dB)	-6.02	1.44	-0.63	-7.96	18.5
ppN(m/s)	-12.07	12.49	-0.08	4.15	
ppT(m/s)	-95.33	98.69	-0.62	32.79	
hh/vv(dB)	-NaN	48.82	-NaN	43.62	-127
vh/hh(dB)	-NaN	-30.94	-35.46	-34.05	138.
hv/vv(dB)	-NaN	-33.84	-55.09	-45.82	845.
hnjmp(dB)	-2.07	2.39	0.15	-8.45	13.8
vnjmp(dB)	-2.77	2.79	0.16	-8.34	14.1



IHOP 2002 (dual-antenna config, modes 1,3,4,7) Data (cal: 49.0,50.0)

W2002-06-17-17-56-04 - PPMAG4
 IRIG:1,UTC: 17:55:56.20 to 18:08:55.14, Dur: 779s
 TimeLngth: 778.94s, TimeInt: 29ms (34.4pps)
 TimeCor=-13.0s, DSPDif(mn,min,mx):28,28,318
 PPS(min,max,std): 13,36,2.36
 Prof: 423 to 27244, NumProf(t/r): 26821/17069
 ProcTime/Recs: 17:55:56-18:04:11/0-17068
 MxACQtime: 33ms; DRate: 192.7KB/s; Flags: 0, 0, 0
 Pulse: 275ns, IFfilt: 5.0MHz; ppPol: HH HV VV
 TxPol: HHVV, PRF: 20 10 20 10 kHz
 Range: Delay 75m, Spacing 15m, Gates 100
 Ave. Pulses: 84, Rng/Prof Aspect@90m/s: 5.7

	Min	Max	Mean	Std	Varc%
hhN(dB)	-67.38	-64.21	-65.73	-75.84	9.7
vvN(dB)	-66.37	-62.98	-64.57	-74.57	10.0
hhL(dB)	-16.81	-3.23	-6.43	-9.97	44.3
vvL(dB)	-6.02	1.44	-0.63	-7.96	18.5
ppN(m/s)	-12.07	12.49	-0.08	4.15	
ppT(m/s)	-95.33	98.69	-0.62	32.79	
hh/vv(dB)	-NaN	48.82	-NaN	43.62	-127
vh/hh(dB)	-NaN	-30.94	-35.46	-34.05	138.
hv/vv(dB)	-NaN	-33.84	-55.09	-45.82	845.
hnjmp(dB)	-2.07	2.39	0.15	-8.45	13.8
vnjmp(dB)	-2.77	2.79	0.16	-8.34	14.1