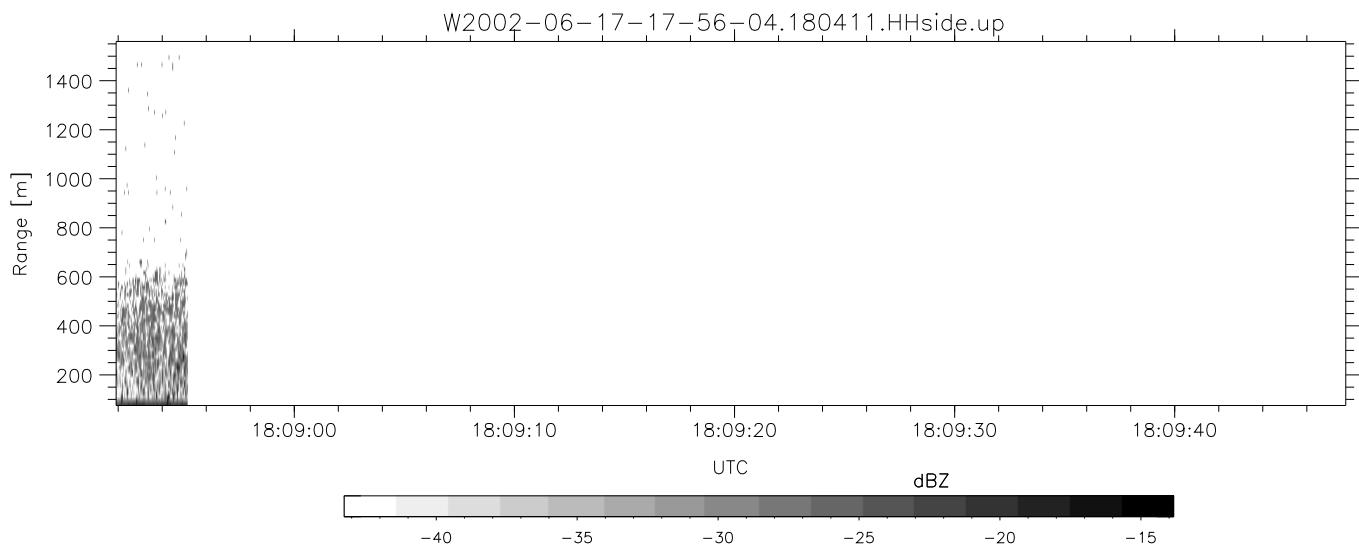
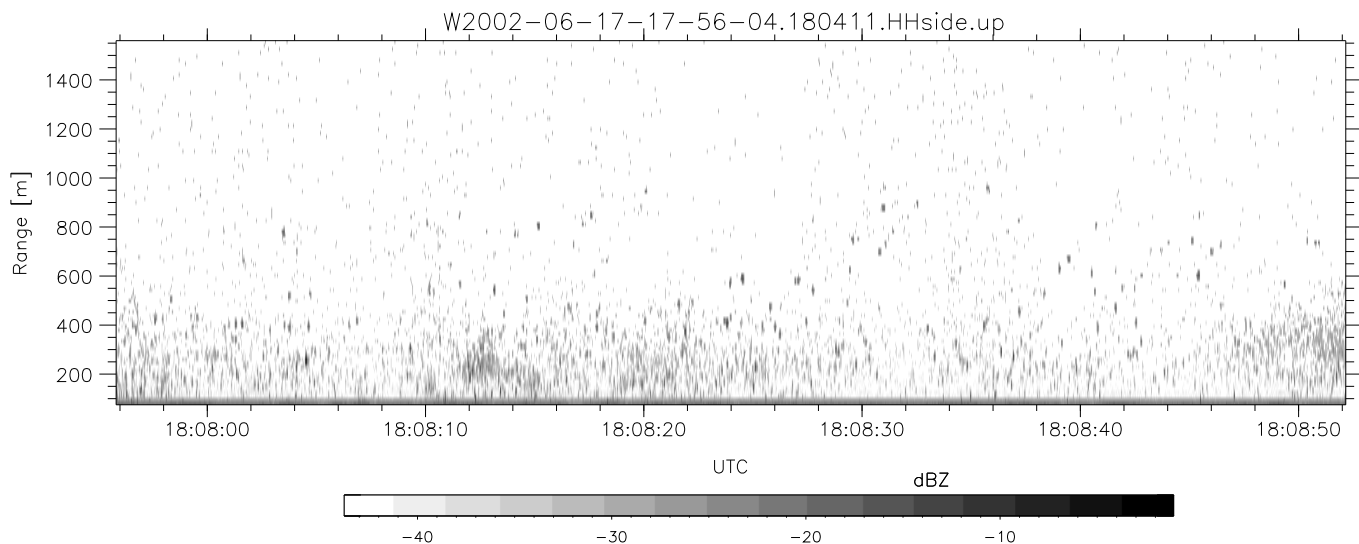
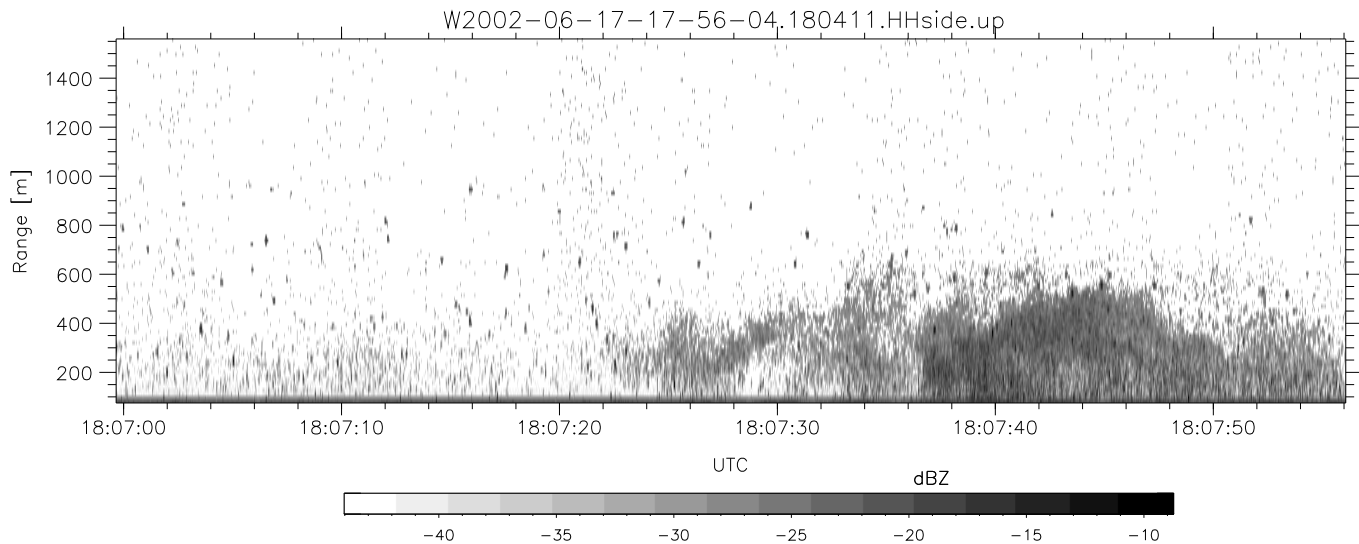


IHOP 2002 (dual-antenna config, modes 1,3,4,7) Data (cal: 49.0,50.0)

W2002-06-17-17-56-04 - PPMAG4  
 IRIG:1,UTC: 17:55:56.20 to 18:08:55.14, Dur: 779s  
 TimeLngth: 778.94s, TimeInt: 29ms (34.4pps)  
 TimeCor=-13.0s, DSPDif(mn,min,mx):29,28,313  
 PPS(min,max,std): 25,36,2.22  
 Prof: 423 to 27244, NumProf(t/r): 26821/9752  
 ProcTime/Recs: 18:04:11-18:08:55/17069-26820  
 MxACQtime: 33ms; DRate: 192.7KB/s; Flags: 0, 0, 0  
 Pulse: 275ns, IFfilt: 5.0MHz; ppPol: HH HV VV  
 TxPol: HHVV, PRF: 20 10 20 10 kHz  
 Range: Delay 75m, Spacing 15m, Gates 100  
 Ave. Pulses: 84, Rng/Prof Aspect@90m/s: 5.7

	Min	Max	Mean	Std	Varc%
hhN(dB)	-67.40	-64.11	-65.75	-75.82	9.8
vvN(dB)	-66.71	-63.03	-64.59	-74.61	10.0
hhL(dB)	-8.33	-3.62	-5.30	-14.43	12.2
vvL(dB)	-2.84	0.19	-0.67	-12.16	7.1
ppN(m/s)	-12.13	12.84	-0.07	4.16	
ppT(m/s)	-95.86	101.46	-0.55	32.85	
hh/vv(dB)	-NaN	41.98	11.40	26.75	3433
vh/hh(dB)	-NaN	-30.79	-34.06	-35.70	68.5
hv/vv(dB)	-NaN	-32.05	-53.31	-45.69	577.
hnjmp(dB)	-2.21	2.04	-0.07	-8.59	14.1
vnjmp(dB)	-2.56	2.01	-0.08	-8.64	13.9



IHOP 2002 (dual-antenna config, modes 1,3,4,7) Data (cal: 49.0,50.0)

W2002-06-17-17-56-04 - PPMAG4  
 IRIG:1,UTC: 17:55:56.20 to 18:08:55.14, Dur: 779s  
 TimeLngth: 778.94s, TimeInt: 29ms (34.4pps)  
 TimeCor=-13.0s, DSPDif(mn,min,mx):29,28,313  
 PPS(min,max,std): 25,36,2.22  
 Prof: 423 to 27244, NumProf(t/r): 26821/9752  
 ProcTime/Recs: 18:04:11-18:08:55/17069-26820  
 MxACQtime: 33ms; DRate: 192.7KB/s; Flags: 0, 0, 0  
 Pulse: 275ns, IFfilt: 5.0MHz; ppPol: HH HV VV  
 TxPol: HHVV, PRF: 20 10 20 10 kHz  
 Range: Delay 75m, Spacing 15m, Gates 100  
 Ave. Pulses: 84, Rng/Prof Aspect@90m/s: 5.7

	Min	Max	Mean	Std	Varc%
hhN(dB)	-67.40	-64.11	-65.75	-75.82	9.8
vvN(dB)	-66.71	-63.03	-64.59	-74.61	10.0
hhL(dB)	-8.33	-3.62	-5.30	-14.43	12.2
vvL(dB)	-2.84	0.19	-0.67	-12.16	7.1
ppN(m/s)	-12.13	12.84	-0.07	4.16	
ppT(m/s)	-95.86	101.46	-0.55	32.85	
hh/vv(dB)	-NaN	41.98	11.40	26.75	3433
vh/hh(dB)	-NaN	-30.79	-34.06	-35.70	68.5
hv/vv(dB)	-NaN	-32.05	-53.31	-45.69	577.
hnjmp(dB)	-2.21	2.04	-0.07	-8.59	14.1
vnjmp(dB)	-2.56	2.01	-0.08	-8.64	13.9