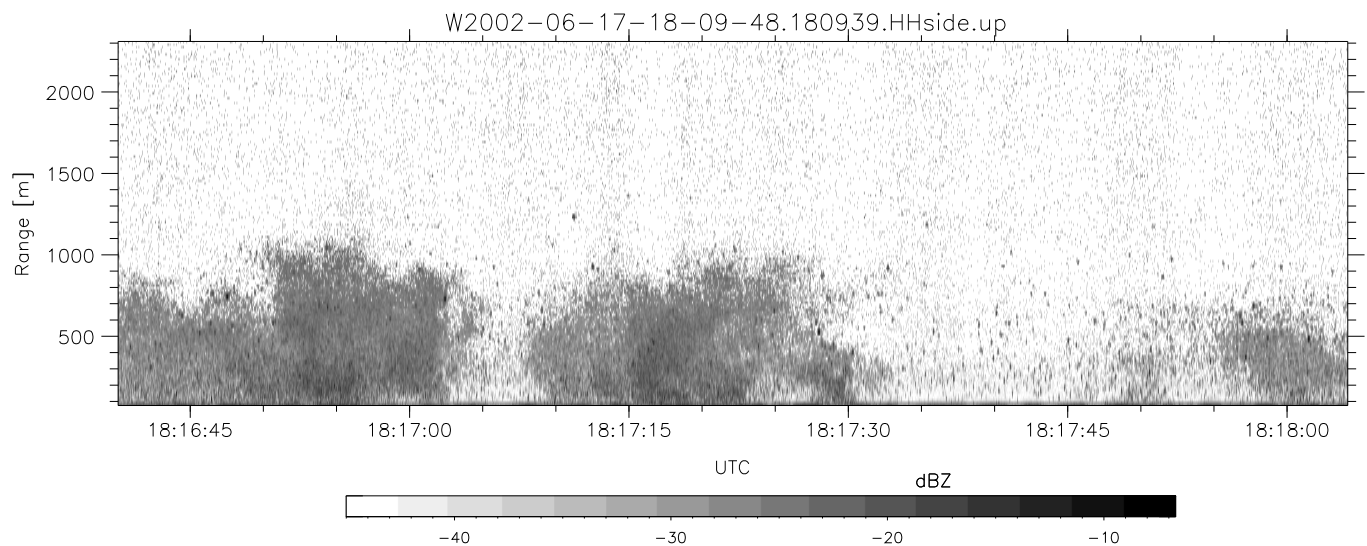
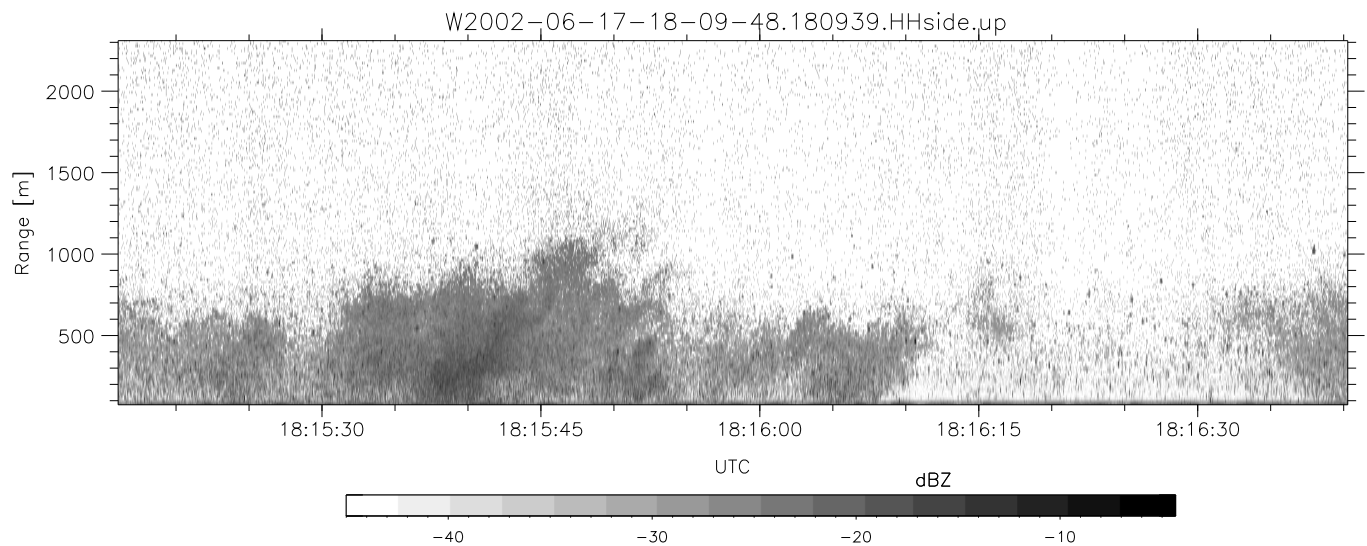
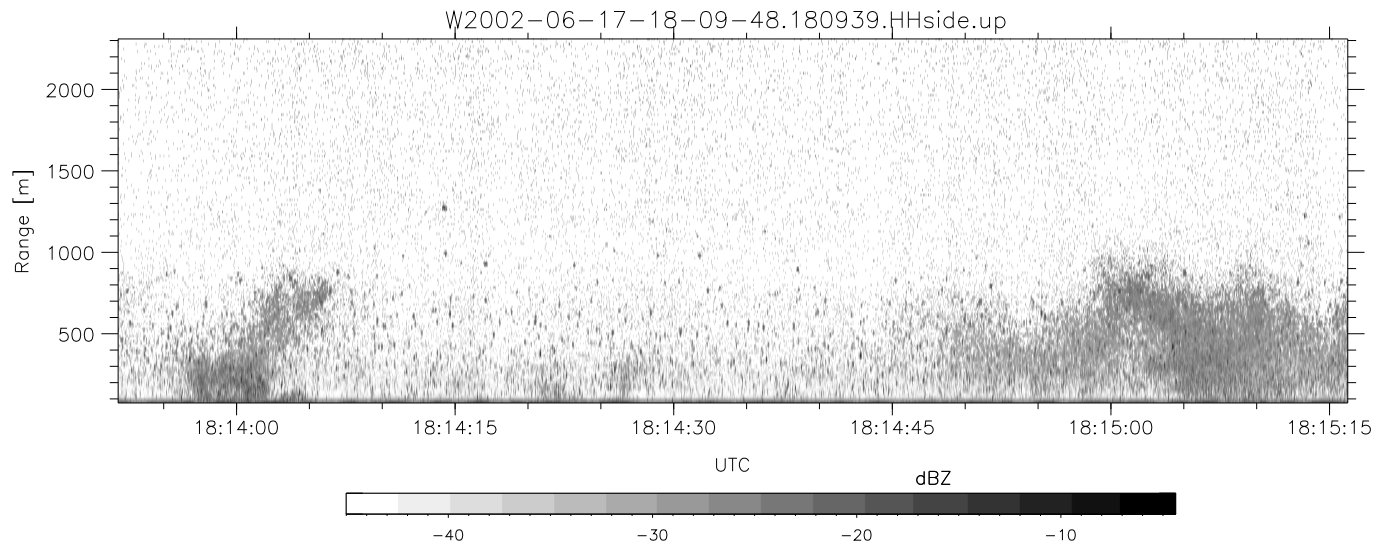


IHOP 2002 (dual-antenna config, modes 1,3,4,7) Data (cal: 49.0,50.0)

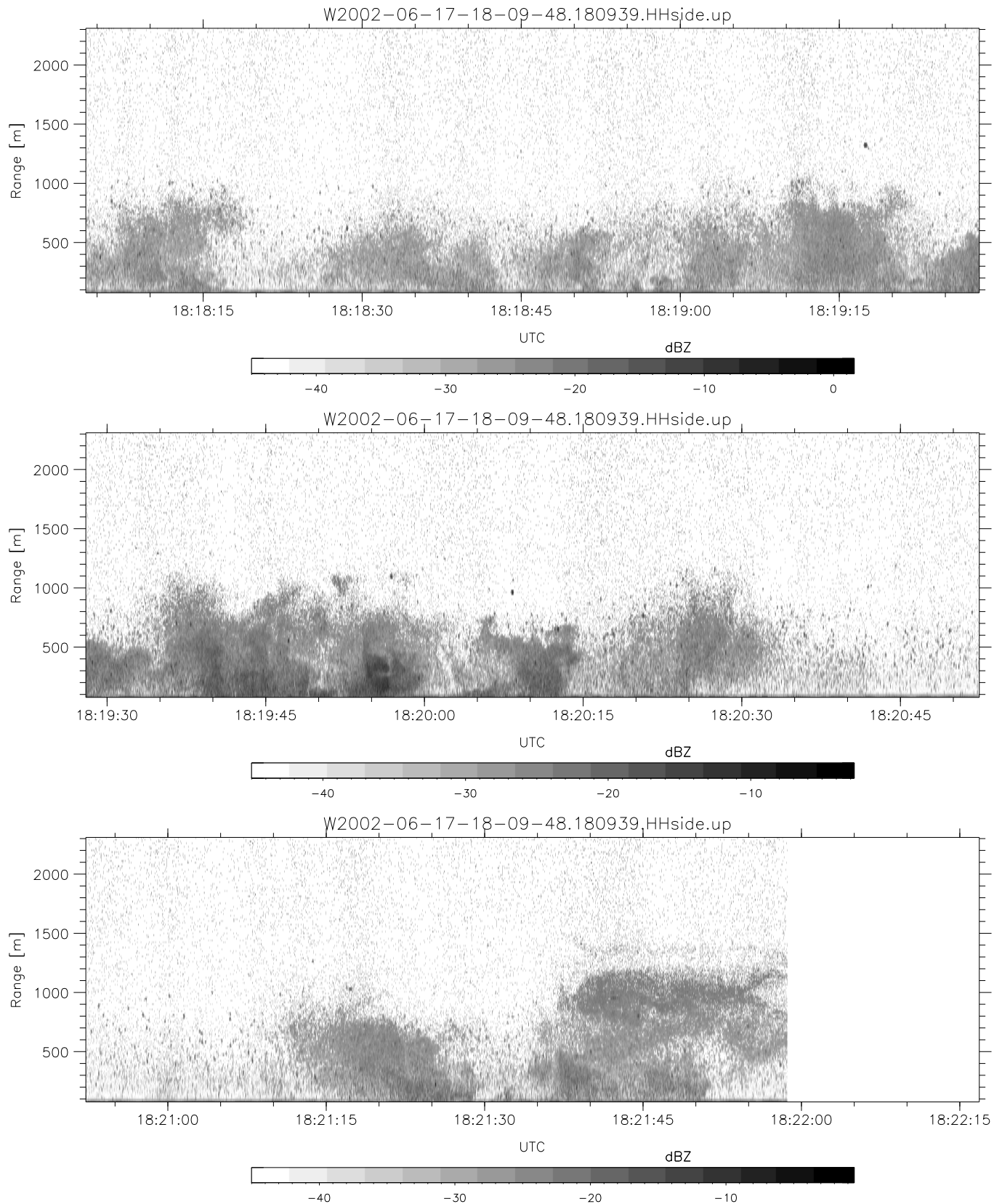
| | | | | | | |
|--|-------------|--------|--------|--------|--------|------|
| W2002-06-17-18-09-48 - SPPMAG | Min | Max | Mean | Std | Varc% | |
| IRIG:1,UTC: 18:09:39.89 to 18:32:13.90, Dur: 1354s | hhN (dB) | -66.58 | -64.93 | -65.71 | -78.77 | 4.9 |
| TimeLngth: 1354.01s, TimeInt: 24ms (40.7pps) | vvN (dB) | -65.53 | -63.78 | -64.62 | -77.64 | 5.0 |
| TimeCor=-13.0s, DSPDif(mn,min,mx):24,20,330 | hhL (dB) | -11.65 | -3.69 | -7.66 | -12.26 | 34.7 |
| PPS(min,max,std): 16,42,2.80 | vhL (dB) | -23.44 | -4.89 | -10.42 | -12.38 | 63.7 |
| Prof: 303 to 55433, NumProf(t/r): 55130/30122 | ppN (m/s) | -15.80 | 15.80 | 0.00 | 9.06 | |
| ProcTime/Recs: 18:09:39-18:21:58/0-30121 | ppT (m/s) | -0.03 | 0.03 | -0.00 | 0.01 | |
| MxACQtime: 17ms; DRate: 97.5KB/s; Flags: 0, 0, 0 | vh/hh (dB) | -NaN | 10.23 | -8.35 | 0.61 | 787. |
| Pulse: 275ns, IFfilt: 5.0MHz; ppPol: HH | hn_jmp (dB) | -0.99 | 1.34 | 0.12 | -11.59 | 6.7 |
| TxPol: H, PRF: 20 kHz | vn_jmp (dB) | -1.08 | 1.35 | 0.13 | -11.51 | 6.9 |
| Range: Delay 75m, Spacing 15m, Gates 150 | | | | | | |
| Ave. Pulses: 348, Rng/Prof Aspect@90m/s: 6.8 | | | | | | |



IHOP 2002 (dual-antenna config, modes 1,3,4,7) Data (cal: 49.0,50.0)

W2002-06-17-18-09-48 - SPPMAG
 IRIG:1,UTC: 18:09:39.89 to 18:32:13.90, Dur: 1354s
 TimeLngth: 1354.01s, TimeInt: 24ms (40.7pps)
 TimeCor=-13.0s, DSPDif(mn,min,mx):24,20,330
 PPS(min,max,std): 16,42,2.80
 Prof: 303 to 55433, NumProf(t/r): 55130/30122
 ProcTime/Recs: 18:09:39-18:21:58/0-30121
 MxACQtime: 17ms; DRate: 97.5KB/s; Flags: 0, 0, 0
 Pulse: 275ns, IFfilt: 5.0MHz; ppPol: HH
 TxPol: H, PRF: 20 kHz
 Range: Delay 75m, Spacing 15m, Gates 150
 Ave. Pulses: 348, Rng/Prof Aspect@90m/s: 6.8

| | Min | Max | Mean | Std | Varc% |
|-----------|--------|--------|--------|--------|-------|
| hhN(dB) | -66.58 | -64.93 | -65.71 | -78.77 | 4.9 |
| vvN(dB) | -65.53 | -63.78 | -64.62 | -77.64 | 5.0 |
| hhL(dB) | -11.65 | -3.69 | -7.66 | -12.26 | 34.7 |
| vhL(dB) | -23.44 | -4.89 | -10.42 | -12.38 | 63.7 |
| ppN(m/s) | -15.80 | 15.80 | 0.00 | 9.06 | |
| ppT(m/s) | -0.03 | 0.03 | -0.00 | 0.01 | |
| vh/hh(dB) | -NaN | 10.23 | -8.35 | 0.61 | 787. |
| hnjmp(dB) | -0.99 | 1.34 | 0.12 | -11.59 | 6.7 |
| vnjmp(dB) | -1.08 | 1.35 | 0.13 | -11.51 | 6.9 |



IHOP 2002 (dual-antenna config, modes 1,3,4,7) Data (cal: 49.0,50.0)

W2002-06-17-18-09-48 - SPPMAG
 IRIG:1,UTC: 18:09:39.89 to 18:32:13.90, Dur: 1354s
 TimeLngth: 1354.01s, TimeInt: 24ms (40.7pps)
 TimeCor=-13.0s, DSPDif(mn,min,mx):24,20,330
 PPS(min,max,std): 16,42,2.80
 Prof: 303 to 55433, NumProf(t/r): 55130/30122
 ProcTime/Recs: 18:09:39-18:21:58/0-30121
 MxACQtime: 17ms; DRate: 97.5KB/s; Flags: 0, 0, 0
 Pulse: 275ns, IFfilt: 5.0MHz; ppPol: HH
 TxPol: H, PRF: 20 kHz
 Range: Delay 75m, Spacing 15m, Gates 150
 Ave. Pulses: 348, Rng/Prof Aspect@90m/s: 6.8

| | Min | Max | Mean | Std | Varc% |
|-----------|--------|--------|--------|--------|-------|
| hhN(dB) | -66.58 | -64.93 | -65.71 | -78.77 | 4.9 |
| vvN(dB) | -65.53 | -63.78 | -64.62 | -77.64 | 5.0 |
| hhL(dB) | -11.65 | -3.69 | -7.66 | -12.26 | 34.7 |
| vhL(dB) | -23.44 | -4.89 | -10.42 | -12.38 | 63.7 |
| ppN(m/s) | -15.80 | 15.80 | 0.00 | 9.06 | |
| ppT(m/s) | -0.03 | 0.03 | -0.00 | 0.01 | |
| vh/hh(dB) | -NaN | 10.23 | -8.35 | 0.61 | 787. |
| hnjmp(dB) | -0.99 | 1.34 | 0.12 | -11.59 | 6.7 |
| vnjmp(dB) | -1.08 | 1.35 | 0.13 | -11.51 | 6.9 |