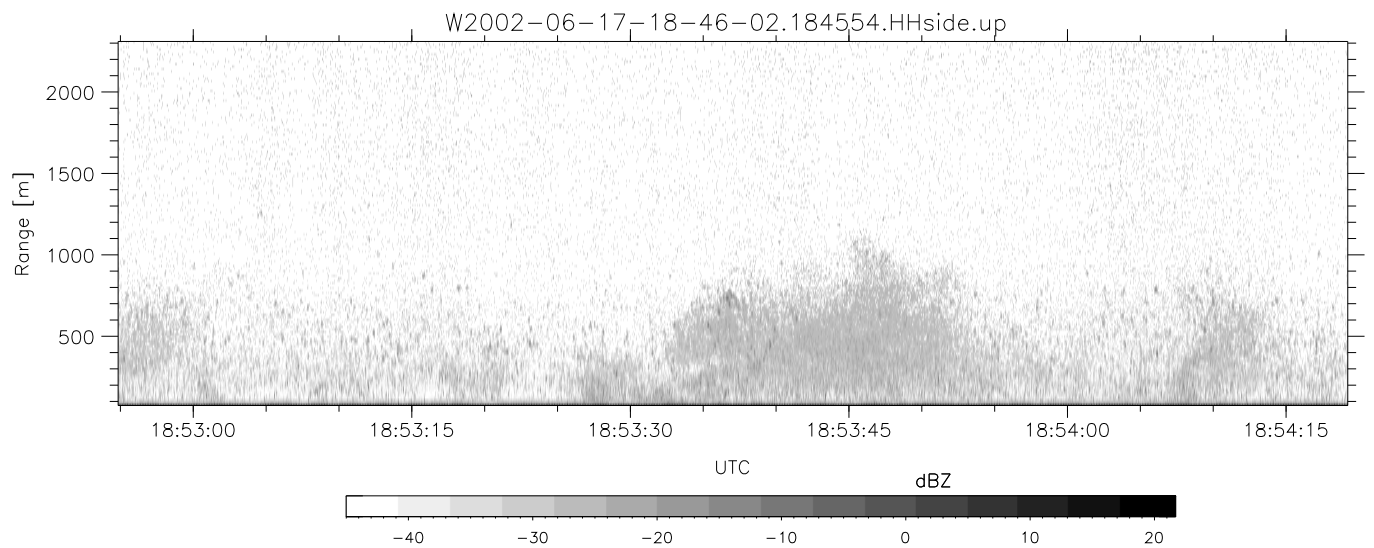
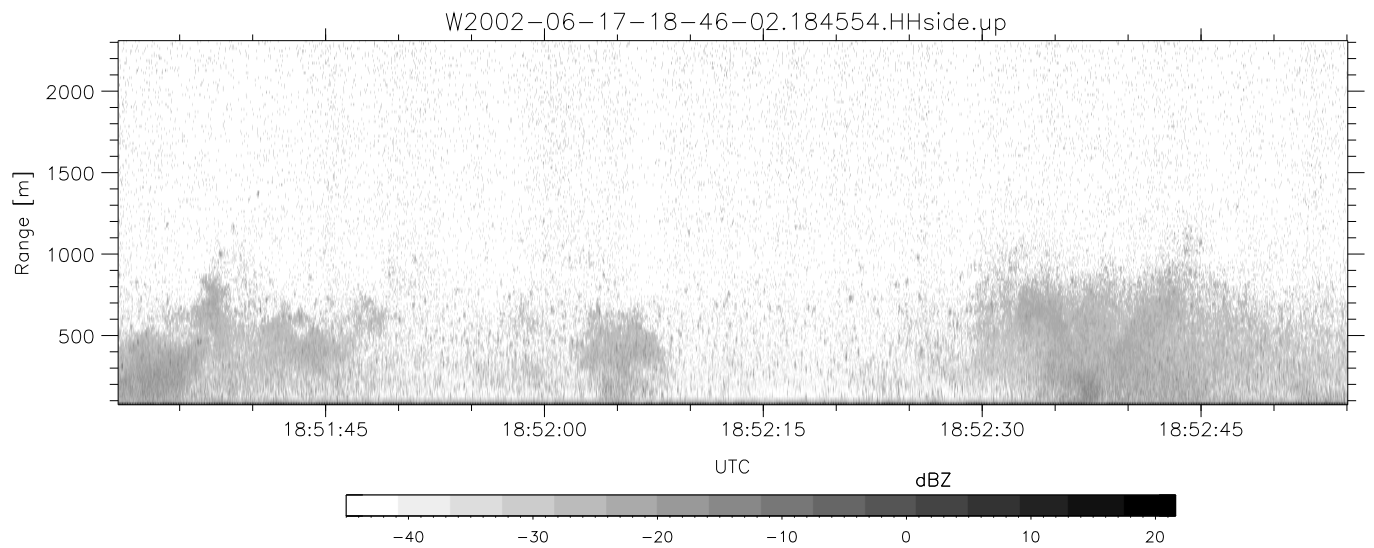
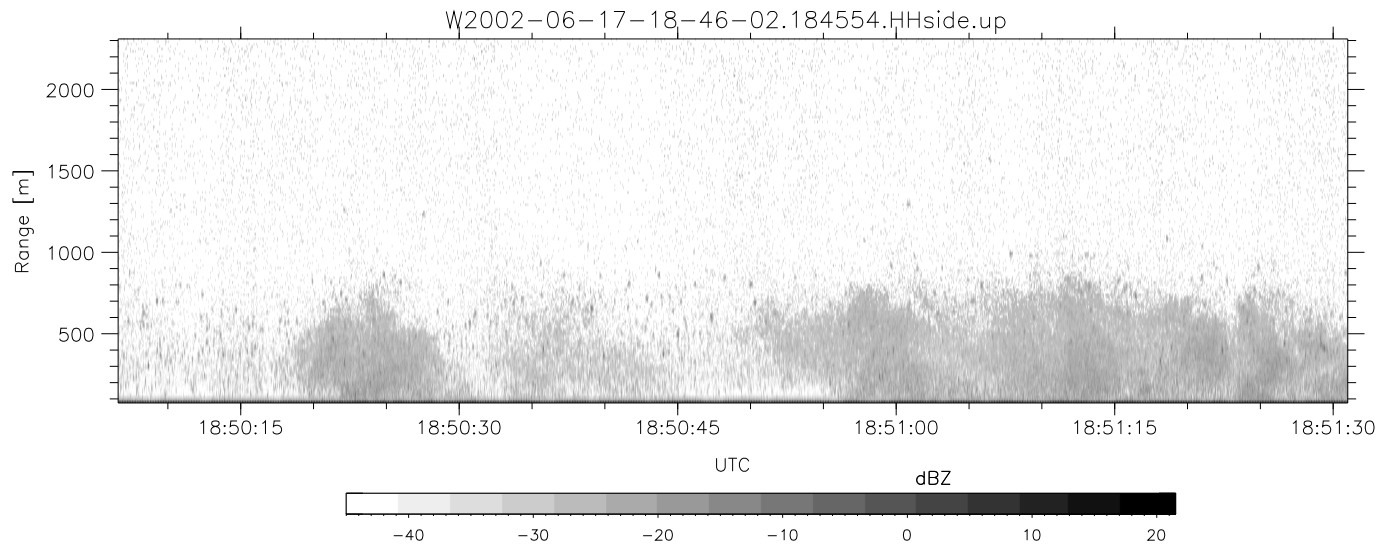


IHOP 2002 (dual-antenna config, modes 1,3,4,7) Data (cal: 49.0,50.0)

W2002-06-17-18-46-02 - SPPMAG
 IRIG:1,UTC: 18:45:54.07 to 19:07:48.22, Dur: 1314s
 TimeLngth: 1314.15s, TimeInt: 24ms (40.5pps)
 TimeCor=-13.0s, DSPDif(mn,min,mx):24,20,377
 PPS(min,max,std): 21,42,2.77
 Prof: 439 to 53703, NumProf(t/r): 53264/30122
 ProcTime/Recs: 18:45:54-18:58:17/0-30121
 MxACQtime: 17ms; DRate: 97.1KB/s; Flags: 0, 0, 0
 Pulse: 275ns, IFfilt: 5.0MHz; ppPol: HH
 TxPol: H, PRF: 20 kHz
 Range: Delay 75m, Spacing 15m, Gates 150
 Ave. Pulses: 348, Rng/Prof Aspect@90m/s: 6.8

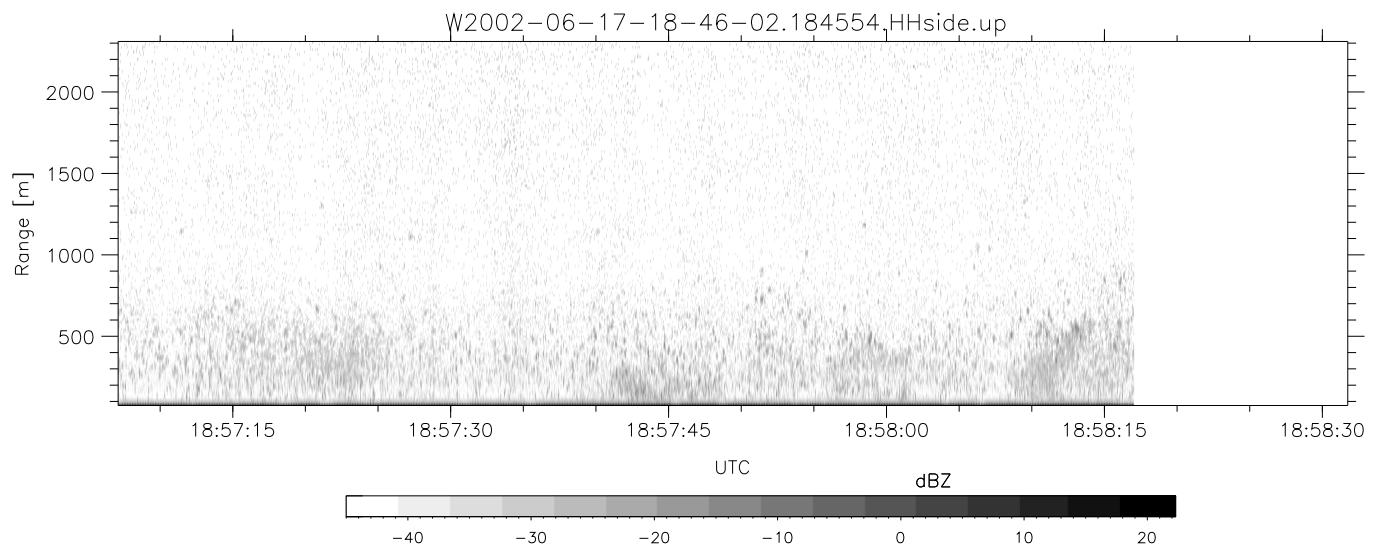
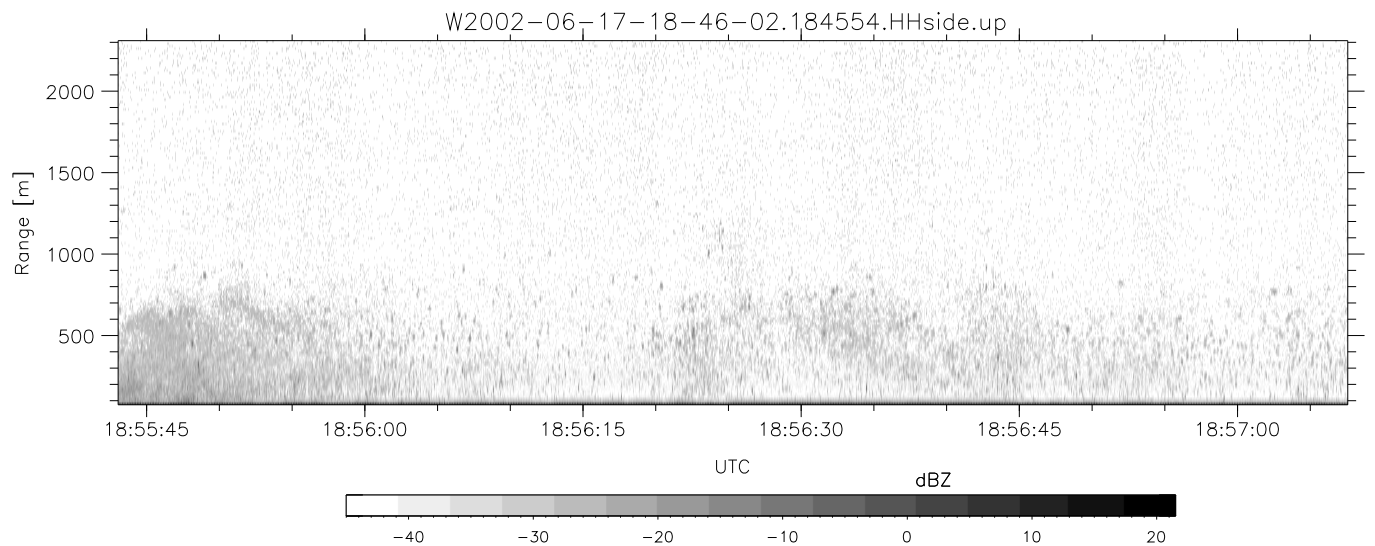
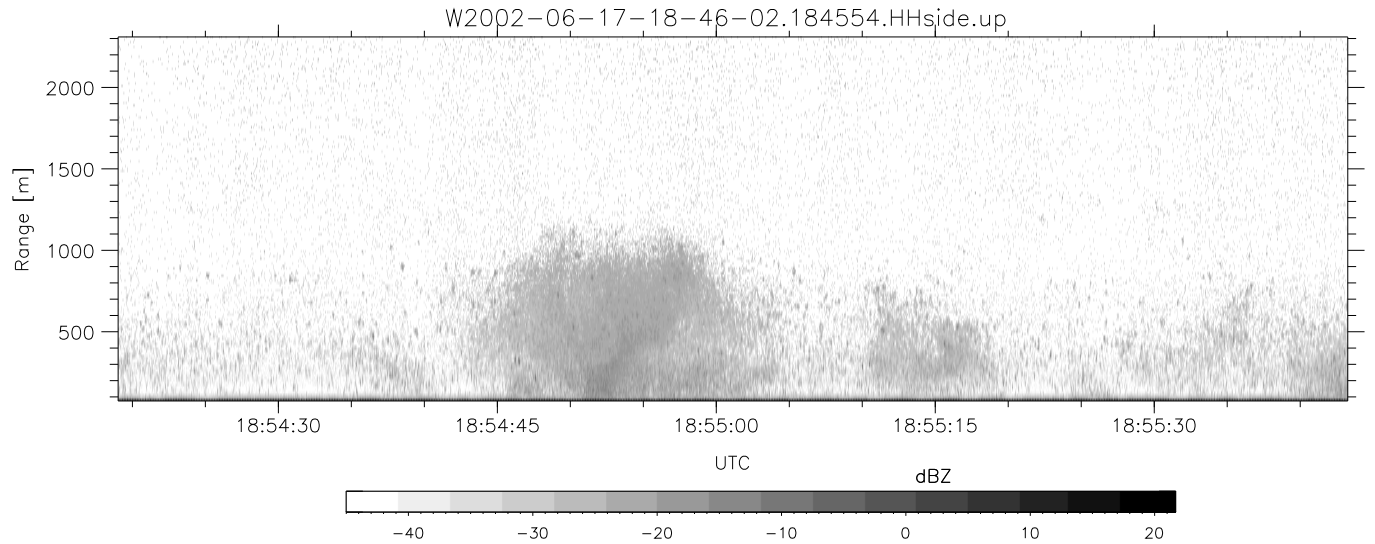
	Min	Max	Mean	Std	Varc%
hhN(dB)	-66.67	-65.02	-65.82	-78.90	4.9
vvN(dB)	-65.73	-63.85	-64.73	-77.76	5.0
hhL(dB)	-66.78	-3.91	-11.00	-10.55	110.
vhL(dB)	-65.60	-0.36	-12.49	-9.64	193.
ppN(m/s)	-15.80	15.80	0.02	8.98	
ppT(m/s)	-15.80	15.80	0.02	6.38	
vh/hh(dB)	-NaN	-1.32	-16.75	-9.62	516.
hnjmp(dB)	-1.28	1.32	0.09	-11.55	6.8
vnjmp(dB)	-1.07	1.36	0.11	-11.55	6.8



IHOP 2002 (dual-antenna config, modes 1,3,4,7) Data (cal: 49.0,50.0)

W2002-06-17-18-46-02 - SPPMAG
 IRIG:1,UTC: 18:45:54.07 to 19:07:48.22, Dur: 1314s
 TimeLngth: 1314.15s, TimeInt: 24ms (40.5pps)
 TimeCor=-13.0s, DSPDif(mn,min,mx):24,20,377
 PPS(min,max,std): 21,42,2.77
 Prof: 439 to 53703, NumProf(t/r): 53264/30122
 ProcTime/Recs: 18:45:54-18:58:17/0-30121
 MxACQtime: 17ms; DRate: 97.1KB/s; Flags: 0, 0, 0
 Pulse: 275ns, IFfilt: 5.0MHz; ppPol: HH
 TxPol: H, PRF: 20 kHz
 Range: Delay 75m, Spacing 15m, Gates 150
 Ave. Pulses: 348, Rng/Prof Aspect@90m/s: 6.8

	Min	Max	Mean	Std	Varc%
hhN(dB)	-66.67	-65.02	-65.82	-78.90	4.9
vvN(dB)	-65.73	-63.85	-64.73	-77.76	5.0
hhL(dB)	-66.78	-3.91	-11.00	-10.55	110.
vhL(dB)	-65.60	-0.36	-12.49	-9.64	193.
ppN(m/s)	-15.80	15.80	0.02	8.98	
ppT(m/s)	-15.80	15.80	0.02	6.38	
vh/hh(dB)	-NaN	-1.32	-16.75	-9.62	516.
hnjmp(dB)	-1.28	1.32	0.09	-11.55	6.8
vnjmp(dB)	-1.07	1.36	0.11	-11.55	6.8



IHOP 2002 (dual-antenna config, modes 1,3,4,7) Data (cal: 49.0,50.0)

W2002-06-17-18-46-02 - SPPMAG
 IRIG:1,UTC: 18:45:54.07 to 19:07:48.22, Dur: 1314s
 TimeLngth: 1314.15s, TimeInt: 24ms (40.5pps)
 TimeCor=-13.0s, DSPDif(mn,min,mx):24,20,377
 PPS(min,max,std): 21,42,2.77
 Prof: 439 to 53703, NumProf(t/r): 53264/30122
 ProcTime/Recs: 18:45:54-18:58:17/0-30121
 MxACQtime: 17ms; DRate: 97.1KB/s; Flags: 0, 0, 0
 Pulse: 275ns, IFfilt: 5.0MHz; ppPol: HH
 TxPol: H, PRF: 20 kHz
 Range: Delay 75m, Spacing 15m, Gates 150
 Ave. Pulses: 348, Rng/Prof Aspect@90m/s: 6.8

	Min	Max	Mean	Std	Varc%
hhN(dB)	-66.67	-65.02	-65.82	-78.90	4.9
vvN(dB)	-65.73	-63.85	-64.73	-77.76	5.0
hhL(dB)	-66.78	-3.91	-11.00	-10.55	110.
vhL(dB)	-65.60	-0.36	-12.49	-9.64	193.
ppN(m/s)	-15.80	15.80	0.02	8.98	
ppT(m/s)	-15.80	15.80	0.02	6.38	
vh/hh(dB)	-NaN	-1.32	-16.75	-9.62	516.
hnjmp(dB)	-1.28	1.32	0.09	-11.55	6.8
vnjmp(dB)	-1.07	1.36	0.11	-11.55	6.8