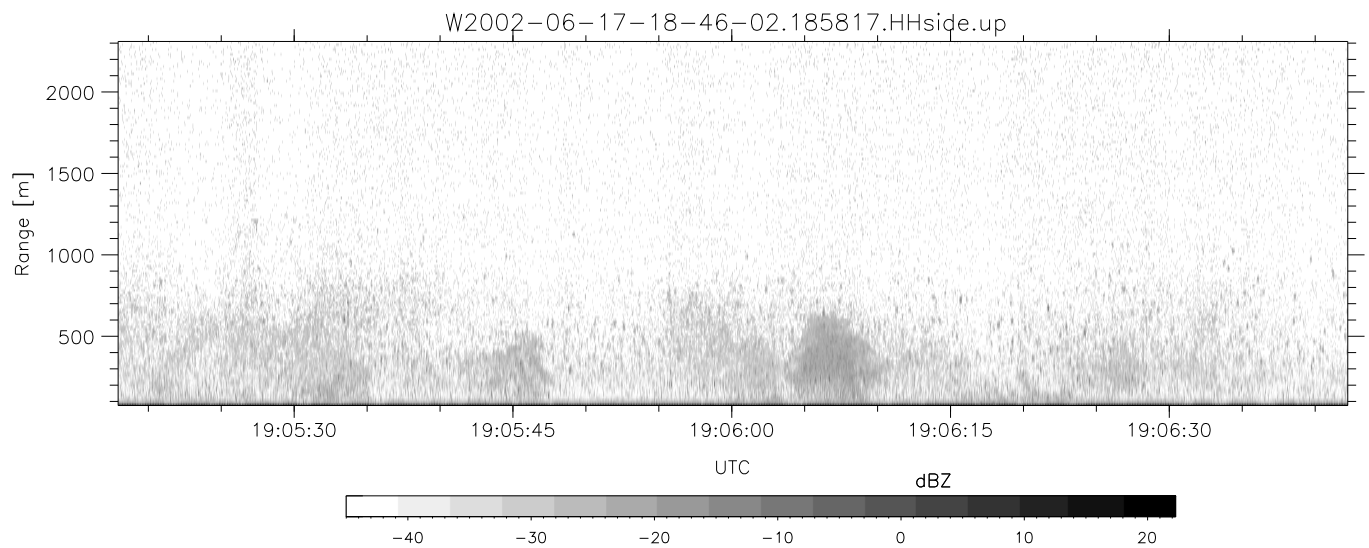
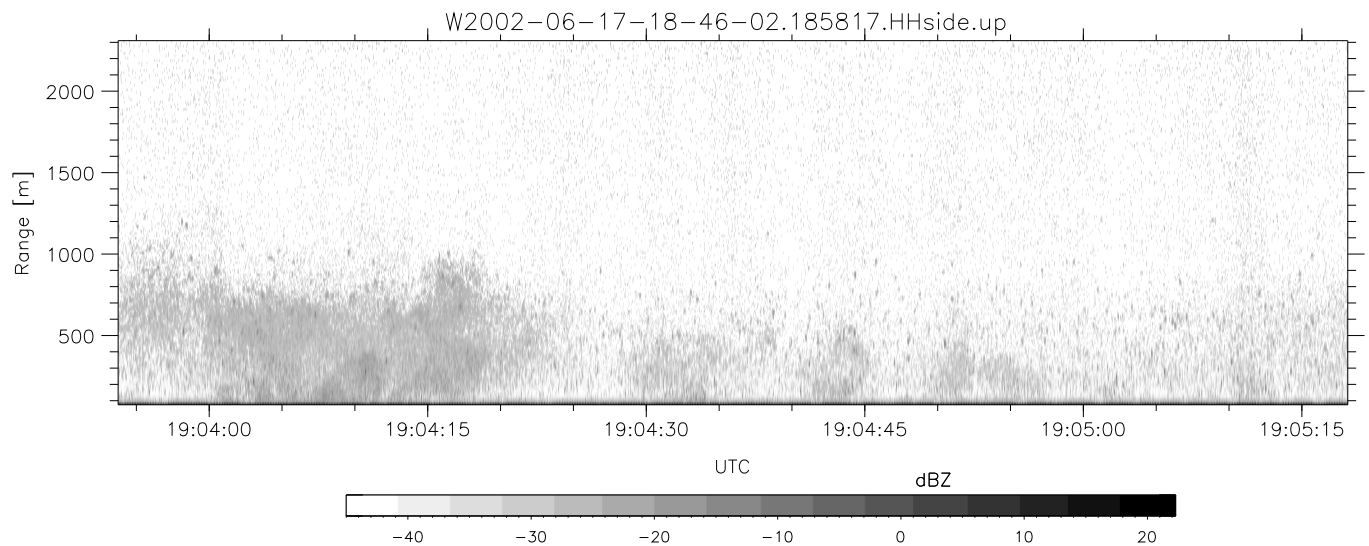
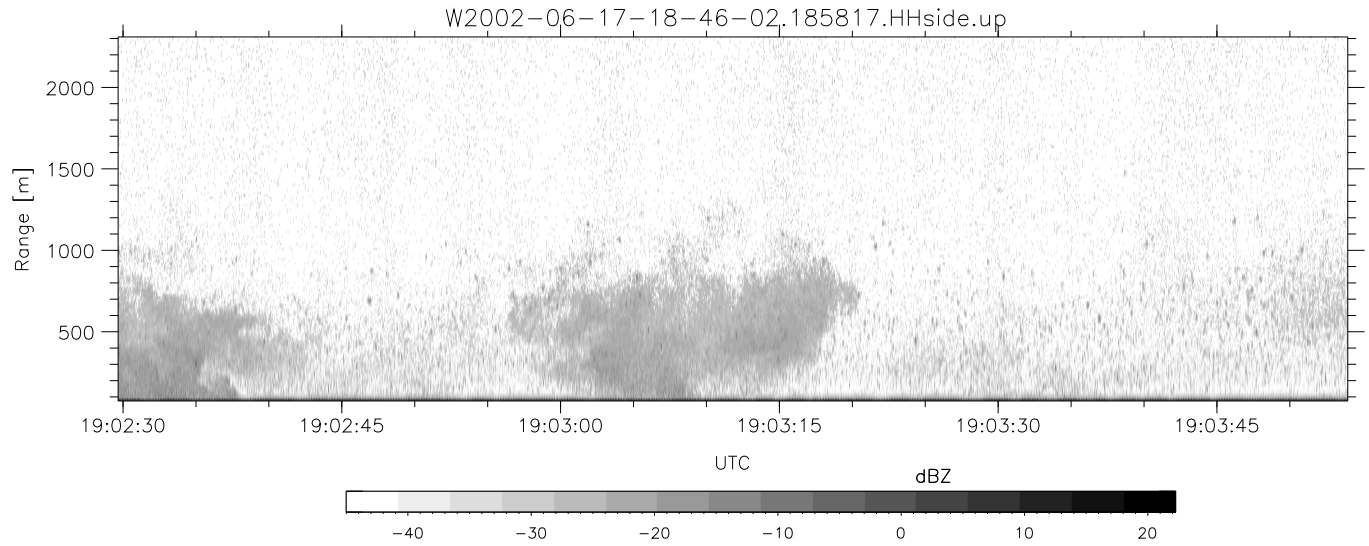


IHOP 2002 (dual-antenna config, modes 1,3,4,7) Data (cal: 49.0,50.0)

W2002-06-17-18-46-02 - SPPMAG
 IRIG:1,UTC: 18:45:54.07 to 19:07:48.22, Dur: 1314s
 TimeLngth: 1314.15s, TimeInt: 24ms (40.5pps)
 TimeCor=-13.0s, DSPDif(mn,min,mx):24,20,330
 PPS(min,max,std): 27,42,2.77
 Prof: 439 to 53703, NumProf(t/r): 53264/23142
 ProcTime/Recs: 18:58:17-19:07:48/30122-53263
 MxACQtime: 17ms; DRate: 97.1KB/s; Flags: 0, 0, 0
 Pulse: 275ns, IFfilt: 5.0MHz; ppPol: HH
 TxPol: H, PRF: 20 kHz
 Range: Delay 75m, Spacing 15m, Gates 150
 Ave. Pulses: 348, Rng/Prof Aspect@90m/s: 6.8

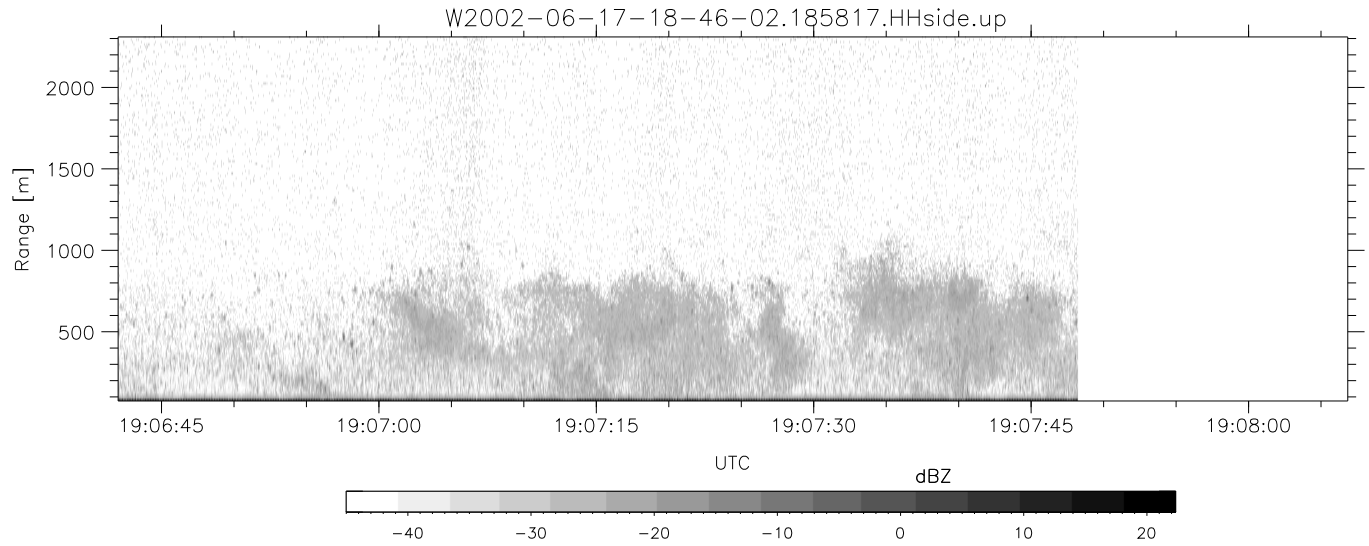
	Min	Max	Mean	Std	Varc%
hhN(dB)	-66.69	-64.94	-65.84	-78.95	4.9
vvN(dB)	-65.68	-63.93	-64.75	-77.76	5.0
hhL(dB)	-66.75	-4.55	-10.51	-9.79	118.
vhL(dB)	-65.60	-4.82	-11.51	-10.46	127.
ppN(m/s)	-15.80	15.80	0.05	9.04	
ppT(m/s)	-15.80	15.80	0.02	6.43	
vh/hh(dB)	-46.47	21.04	0.10	10.54	1104
hnjmp(dB)	-1.02	1.04	0.09	-11.62	6.7
vnjmp(dB)	-1.06	1.20	0.11	-11.51	6.9



IHOP 2002 (dual-antenna config, modes 1,3,4,7) Data (cal: 49.0,50.0)

W2002-06-17-18-46-02 - SPPMAG
 IRIG:1,UTC: 18:45:54.07 to 19:07:48.22, Dur: 1314s
 TimeLngth: 1314.15s, TimeInt: 24ms (40.5pps)
 TimeCor=-13.0s, DSPDif(mn,min,mx):24,20,330
 PPS(min,max,std): 27,42,2.77
 Prof: 439 to 53703, NumProf(t/r): 53264/23142
 ProcTime/Recs: 18:58:17-19:07:48/30122-53263
 MxACQtime: 17ms; DRate: 97.1KB/s; Flags: 0, 0, 0
 Pulse: 275ns, IFfilt: 5.0MHz; ppPol: HH
 TxPol: H, PRF: 20 kHz
 Range: Delay 75m, Spacing 15m, Gates 150
 Ave. Pulses: 348, Rng/Prof Aspect@90m/s: 6.8

	Min	Max	Mean	Std	Varc%
hhN(dB)	-66.69	-64.94	-65.84	-78.95	4.9
vvN(dB)	-65.68	-63.93	-64.75	-77.76	5.0
hhL(dB)	-66.75	-4.55	-10.51	-9.79	118.
vhL(dB)	-65.60	-4.82	-11.51	-10.46	127.
ppN(m/s)	-15.80	15.80	0.05	9.04	
ppT(m/s)	-15.80	15.80	0.02	6.43	
vh/hh(dB)	-46.47	21.04	0.10	10.54	1104
hnjmp(dB)	-1.02	1.04	0.09	-11.62	6.7
vnjmp(dB)	-1.06	1.20	0.11	-11.51	6.9



IHOP 2002 (dual-antenna config, modes 1,3,4,7) Data (cal: 49.0,50.0)

W2002-06-17-18-46-02 - SPPMAG
 IRIG:1,UTC: 18:45:54.07 to 19:07:48.22, Dur: 1314s
 TimeLngth: 1314.15s, TimeInt: 24ms (40.5pps)
 TimeCor=-13.0s, DSPDif(mn,min,mx):24,20,330
 PPS(min,max,std): 27,42,2.77
 Prof: 439 to 53703, NumProf(t/r): 53264/23142
 ProcTime/Recs: 18:58:17-19:07:48/30122-53263
 MxACQtime: 17ms; DRate: 97.1KB/s; Flags: 0, 0, 0
 Pulse: 275ns, IFfilt: 5.0MHz; ppPol: HH
 TxPol: H, PRF: 20 kHz
 Range: Delay 75m, Spacing 15m, Gates 150
 Ave. Pulses: 348, Rng/Prof Aspect@90m/s: 6.8

	Min	Max	Mean	Std	Varc%
hhN(dB)	-66.69	-64.94	-65.84	-78.95	4.9
vvN(dB)	-65.68	-63.93	-64.75	-77.76	5.0
hhL(dB)	-66.75	-4.55	-10.51	-9.79	118.
vhL(dB)	-65.60	-4.82	-11.51	-10.46	127.
ppN(m/s)	-15.80	15.80	0.05	9.04	
ppT(m/s)	-15.80	15.80	0.02	6.43	
vh/hh(dB)	-46.47	21.04	0.10	10.54	1104
hnjmp(dB)	-1.02	1.04	0.09	-11.62	6.7
vnjmp(dB)	-1.06	1.20	0.11	-11.51	6.9