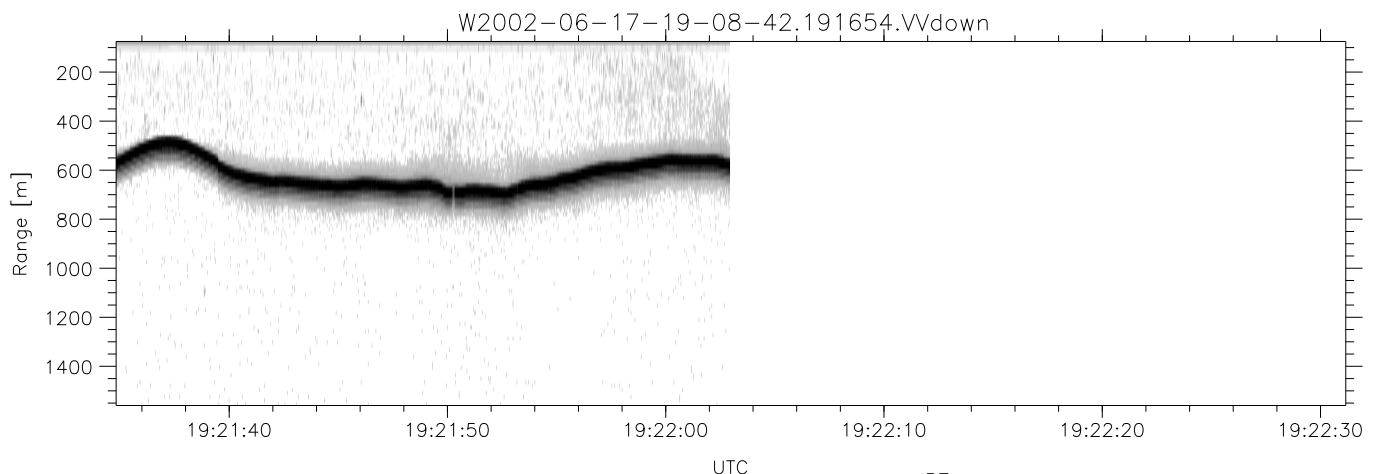
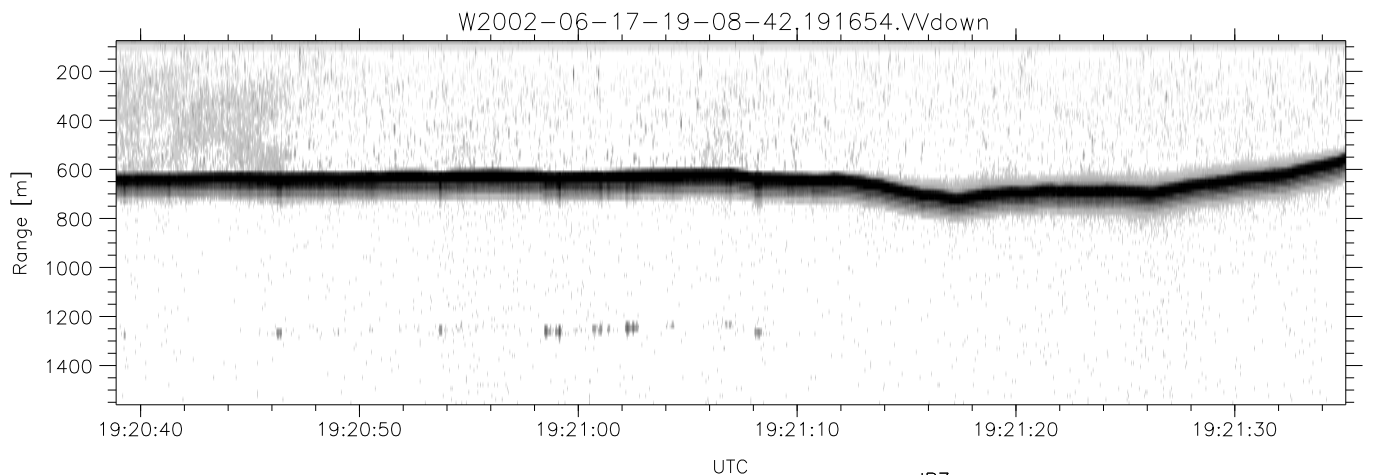
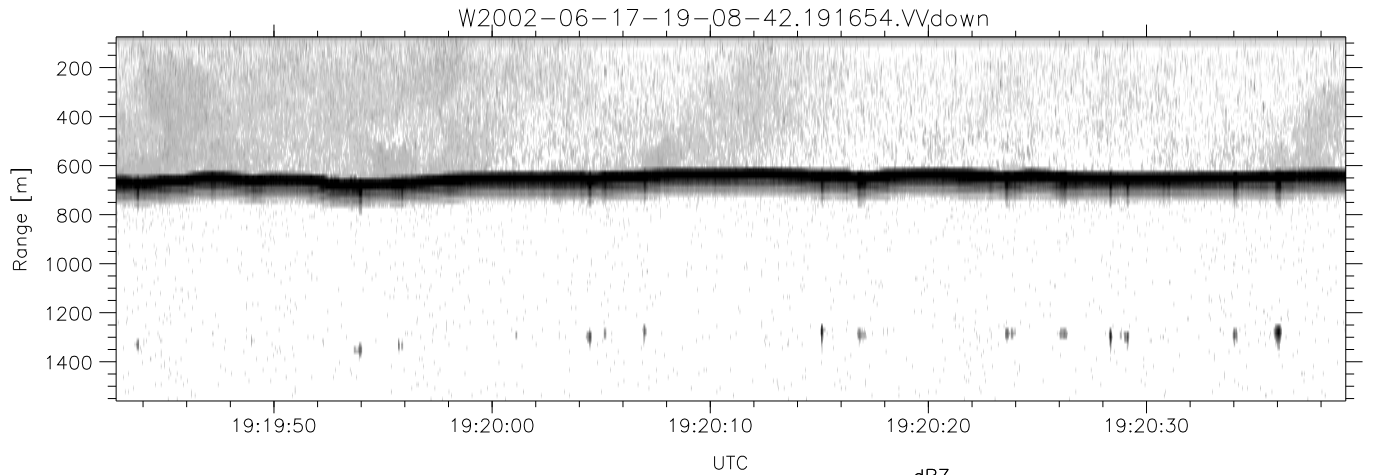


IHOP 2002 (dual-antenna config, modes 1,3,4,7) Data (cal: 49.0,50.0)

	Min	Max	Mean	Std	Varc%	
W2002-06-17-19-08-42 - PPMAG4						
IRIG:1,UTC: 19:08:33.99 to 19:22:02.93, Dur: 809s	hhN (dB)	-67.54	-64.27	-65.92	-76.05	9.7
TimeLngth: 808.94s, TimeInt: 29ms (34.1pps)	vvN (dB)	-66.43	-63.19	-64.80	-74.84	9.9
TimeCor=-13.0s, DSPDif(mn,min,mx):29,28,370	hhL (dB)	-9.79	-3.94	-5.79	-14.42	13.7
PPS(min,max,std): 23,36,2.39	vvL (dB)	-4.56	-0.03	-1.16	-9.57	14.4
Prof: 376 to 27947, NumProf(t/r): 27571/10502	ppN (m/s)	-12.49	12.61	0.02	4.10	
ProcTime/Recs: 19:16:54-19:22:02/17069-27570	ppT (m/s)	-98.68	99.58	0.12	32.38	
MxAcQtime: 33ms; DRate: 190.8KB/s; Flags: 0, 0, 0	hh/vv (dB)	-NaN	45.04	16.28	28.54	1683
Pulse: 275ns, IFilt: 5.0MHz; ppPol: HH HV VV	vh/hh (dB)	-NaN	-32.25	-39.75	-34.65	323.
TxPol: HHVV, PRF: 20 10 20 10 kHz	hv/vv (dB)	-NaN	-33.55	-53.36	-45.85	564.
Range: Delay 75m, Spacing 15m, Gates 100	hn_jmp (dB)	-1.95	2.14	0.14	-8.51	13.6
Ave. Pulses: 84, Rng/Prof Aspect@90m/s: 5.7	vn_jmp (dB)	-1.93	2.24	0.16	-8.36	14.1



IHOP 2002 (dual-antenna config, modes 1,3,4,7) Data (cal: 49.0,50.0)

W2002-06-17-19-08-42 - PPMAG4
 IRIG:1,UTC: 19:08:33.99 to 19:22:02.93, Dur: 809s
 TimeLngth: 808.94s, TimeInt: 29ms (34.1pps)
 TimeCor=-13.0s, DSPDif(mn,min,mx):29,28,370
 PPS(min,max,std): 23,36,2.39
 Prof: 376 to 27947, NumProf(t/r): 27571/10502
 ProcTime/Recs: 19:16:54-19:22:02/17069-27570
 MxACQtime: 33ms; DRate: 190.8KB/s; Flags: 0, 0, 0
 Pulse: 275ns, IFfilt: 5.0MHz; ppPol: HH HV VV
 TxPol: HHVV, PRF: 20 10 20 10 kHz
 Range: Delay 75m, Spacing 15m, Gates 100
 Ave. Pulses: 84, Rng/Prof Aspect@90m/s: 5.7

	Min	Max	Mean	Std	Varc%
hhN(dB)	-67.54	-64.27	-65.92	-76.05	9.7
vvN(dB)	-66.43	-63.19	-64.80	-74.84	9.9
hhL(dB)	-9.79	-3.94	-5.79	-14.42	13.7
vvL(dB)	-4.56	-0.03	-1.16	-9.57	14.4
ppN(m/s)	-12.49	12.61	0.02	4.10	
ppT(m/s)	-98.68	99.58	0.12	32.38	
hh/vv(dB)	-NaN	45.04	16.28	28.54	1683
vh/hh(dB)	-NaN	-32.25	-39.75	-34.65	323.
hv/vv(dB)	-NaN	-33.55	-53.36	-45.85	564.
hnjmp(dB)	-1.95	2.14	0.14	-8.51	13.6
vnjmp(dB)	-1.93	2.24	0.16	-8.36	14.1