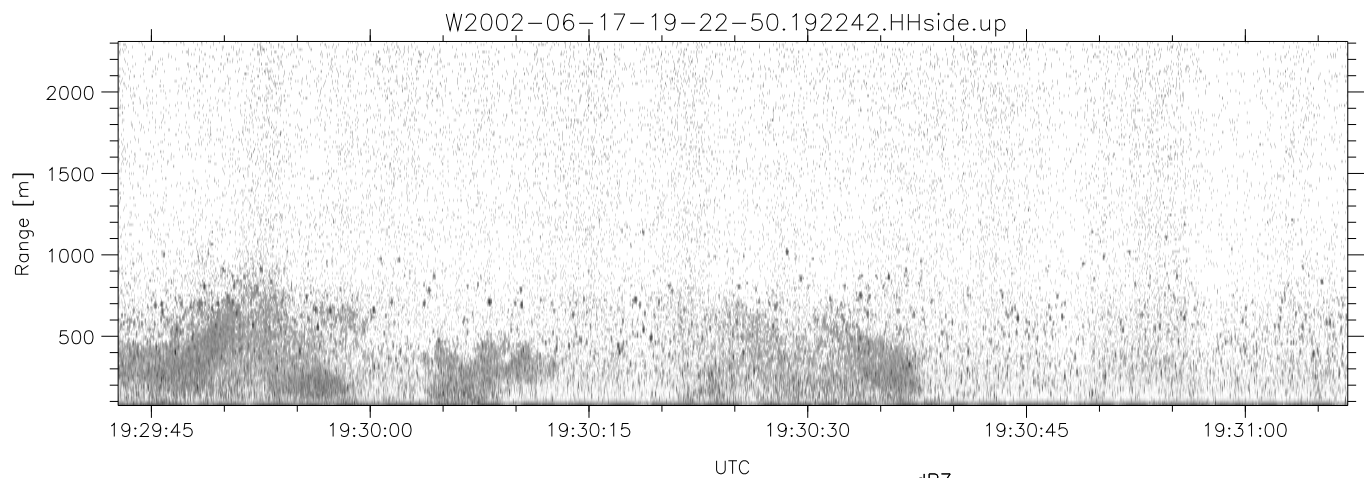
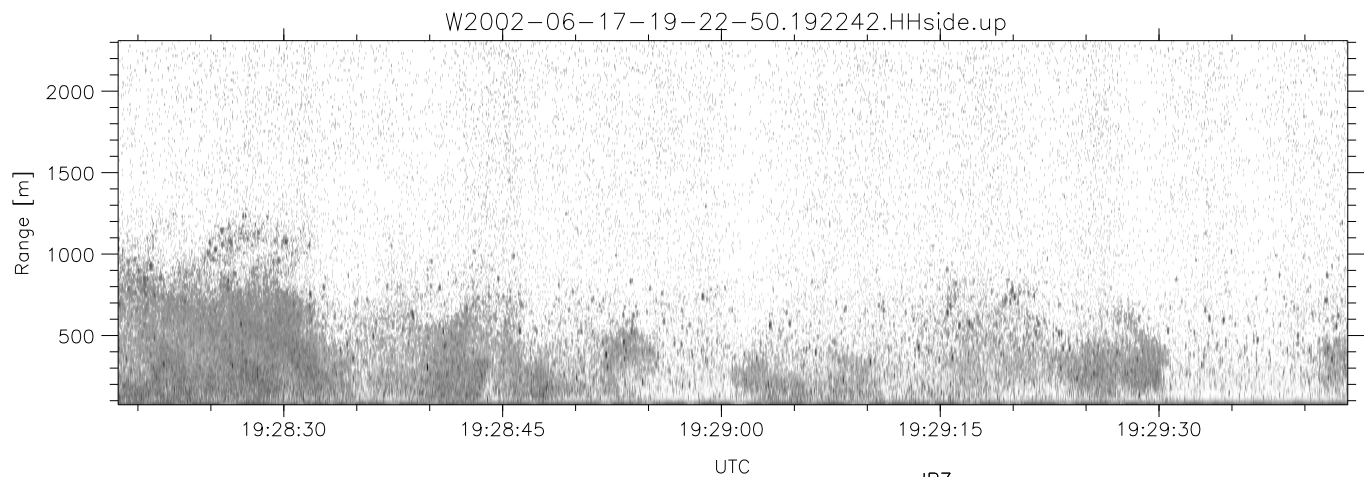
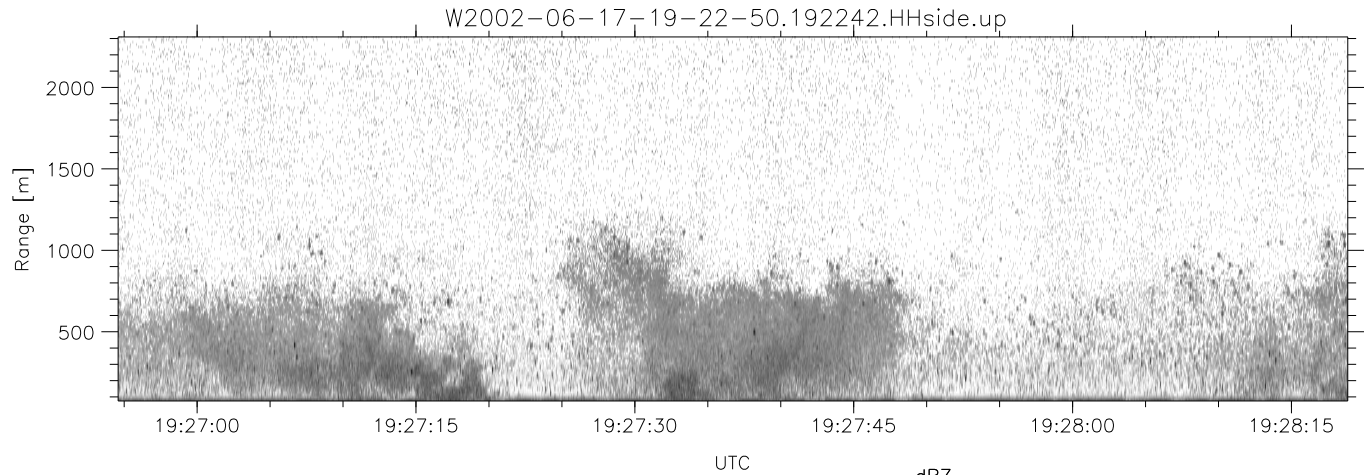


IHOP 2002 (dual-antenna config, modes 1,3,4,7) Data (cal: 49.0,50.0)

W2002-06-17-19-22-50 - SPPMAG  
 IRIG:1,UTC: 19:22:42.05 to 19:43:22.30, Dur: 1240s  
 TimeLngth: 1240.25s, TimeInt: 24ms (40.5pps)  
 TimeCor=-13.0s, DSPDif(mn,min,mx):24,20,383  
 PPS(min,max,std): 23,42,2.79  
 Prof: 350 to 50583, NumProf(t/r): 50233/30122  
 ProcTime/Recs: 19:22:42-19:35:05/0-30121  
 MxACQtime: 17ms; DRate: 97.0KB/s; Flags: 0, 0, 0  
 Pulse: 275ns, IFfilt: 5.0MHz; ppPol: HH  
 TxPol: H, PRF: 20 kHz  
 Range: Delay 75m, Spacing 15m, Gates 150  
 Ave. Pulses: 348, Rng/Prof Aspect@90m/s: 6.8

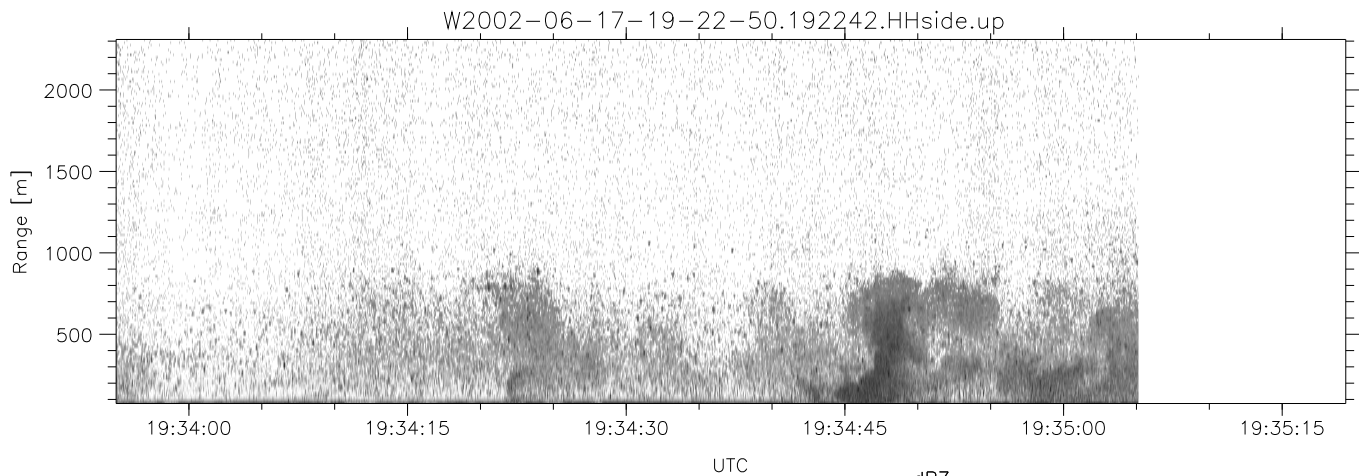
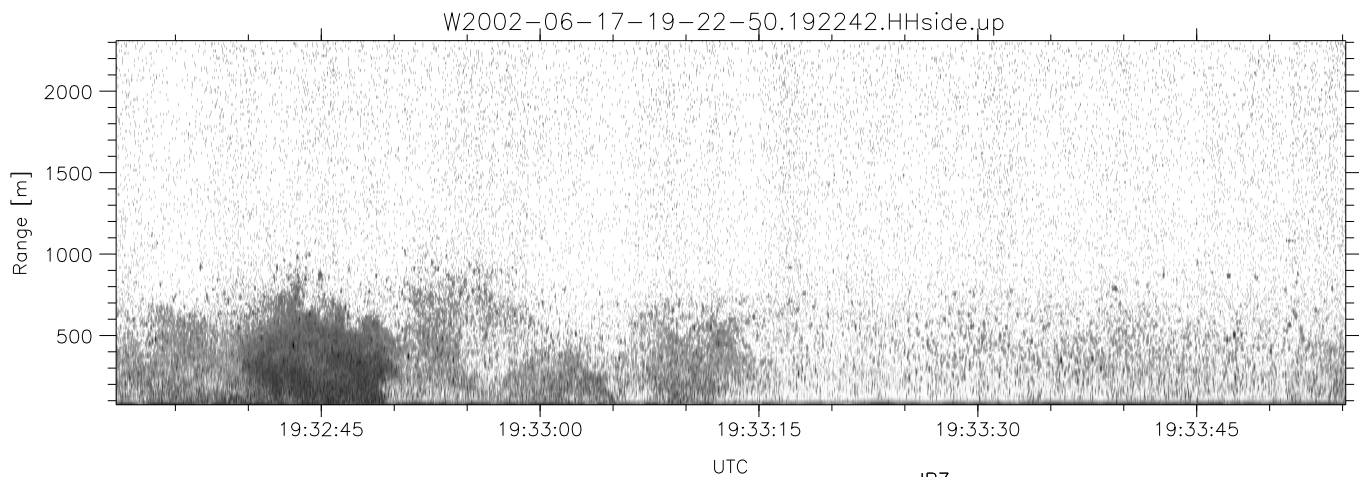
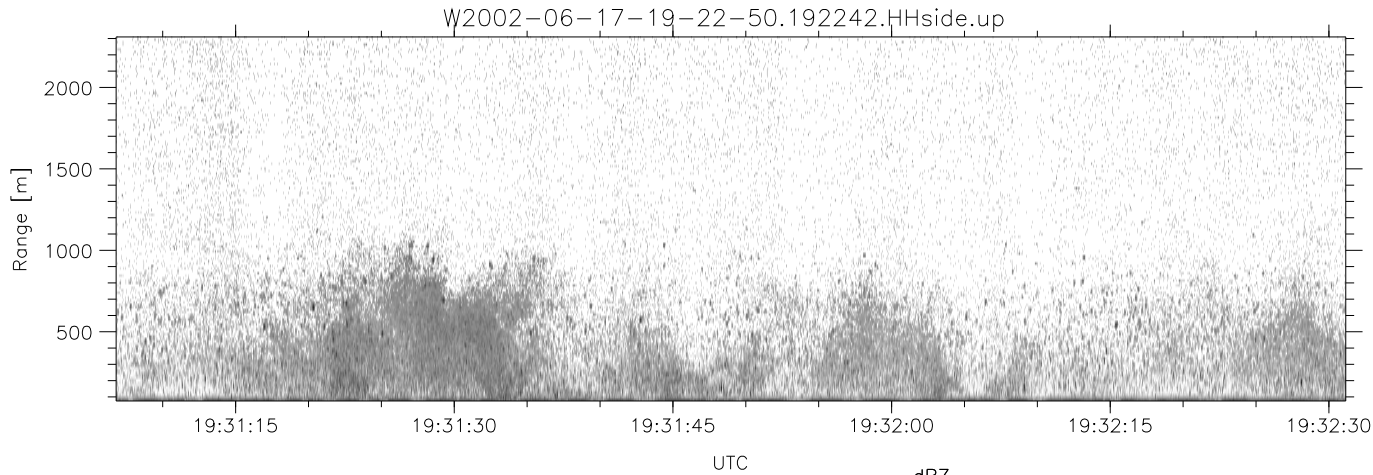
	Min	Max	Mean	Std	Varc%
hhN(dB)	-66.74	-64.97	-65.89	-78.92	5.0
vvN(dB)	-65.77	-64.02	-64.81	-77.75	5.1
hhL(dB)	-16.24	-4.47	-7.86	-12.39	35.3
vhL(dB)	-25.16	-4.62	-8.66	-12.04	45.9
ppN(m/s)	-15.80	15.80	0.01	9.01	
ppT(m/s)	-0.07	0.03	-0.00	0.01	
vh/hh(dB)	-NaN	-4.13	-19.72	-13.18	451.
hnjmp(dB)	-1.28	1.02	-0.10	-11.75	6.8
vnjmp(dB)	-1.21	0.90	-0.11	-11.74	6.9



IHOP 2002 (dual-antenna config, modes 1,3,4,7) Data (cal: 49.0,50.0)

W2002-06-17-19-22-50 - SPPMAG  
 IRIG:1,UTC: 19:22:42.05 to 19:43:22.30, Dur: 1240s  
 TimeLngth: 1240.25s, TimeInt: 24ms (40.5pps)  
 TimeCor=-13.0s, DSPDif(mn,min,mx):24,20,383  
 PPS(min,max,std): 23,42,2.79  
 Prof: 350 to 50583, NumProf(t/r): 50233/30122  
 ProcTime/Recs: 19:22:42-19:35:05/0-30121  
 MxACQtime: 17ms; DRate: 97.0KB/s; Flags: 0, 0, 0  
 Pulse: 275ns, IFfilt: 5.0MHz; ppPol: HH  
 TxPol: H, PRF: 20 kHz  
 Range: Delay 75m, Spacing 15m, Gates 150  
 Ave. Pulses: 348, Rng/Prof Aspect@90m/s: 6.8

	Min	Max	Mean	Std	Varc%
hhN(dB)	-66.74	-64.97	-65.89	-78.92	5.0
vvN(dB)	-65.77	-64.02	-64.81	-77.75	5.1
hhL(dB)	-16.24	-4.47	-7.86	-12.39	35.3
vhL(dB)	-25.16	-4.62	-8.66	-12.04	45.9
ppN(m/s)	-15.80	15.80	0.01	9.01	
ppT(m/s)	-0.07	0.03	-0.00	0.01	
vh/hh(dB)	-NaN	-4.13	-19.72	-13.18	451.
hnjmp(dB)	-1.28	1.02	-0.10	-11.75	6.8
vnjmp(dB)	-1.21	0.90	-0.11	-11.74	6.9



IHOP 2002 (dual-antenna config, modes 1,3,4,7) Data (cal: 49.0,50.0)

W2002-06-17-19-22-50 - SPPMAG  
 IRIG:1,UTC: 19:22:42.05 to 19:43:22.30, Dur: 1240s  
 TimeLngth: 1240.25s, TimeInt: 24ms (40.5pps)  
 TimeCor=-13.0s, DSPDif(mn,min,mx):24,20,383  
 PPS(min,max,std): 23,42,2.79  
 Prof: 350 to 50583, NumProf(t/r): 50233/30122  
 ProcTime/Recs: 19:22:42-19:35:05/0-30121  
 MxACQtime: 17ms; DRate: 97.0KB/s; Flags: 0, 0, 0  
 Pulse: 275ns, IFfilt: 5.0MHz; ppPol: HH  
 TxPol: H, PRF: 20 kHz  
 Range: Delay 75m, Spacing 15m, Gates 150  
 Ave. Pulses: 348, Rng/Prof Aspect@90m/s: 6.8

	Min	Max	Mean	Std	Varc%
hhN(dB)	-66.74	-64.97	-65.89	-78.92	5.0
vvN(dB)	-65.77	-64.02	-64.81	-77.75	5.1
hhL(dB)	-16.24	-4.47	-7.86	-12.39	35.3
vhL(dB)	-25.16	-4.62	-8.66	-12.04	45.9
ppN(m/s)	-15.80	15.80	0.01	9.01	
ppT(m/s)	-0.07	0.03	-0.00	0.01	
vh/hh(dB)	-NaN	-4.13	-19.72	-13.18	451.
hnjmp(dB)	-1.28	1.02	-0.10	-11.75	6.8
vnjmp(dB)	-1.21	0.90	-0.11	-11.74	6.9