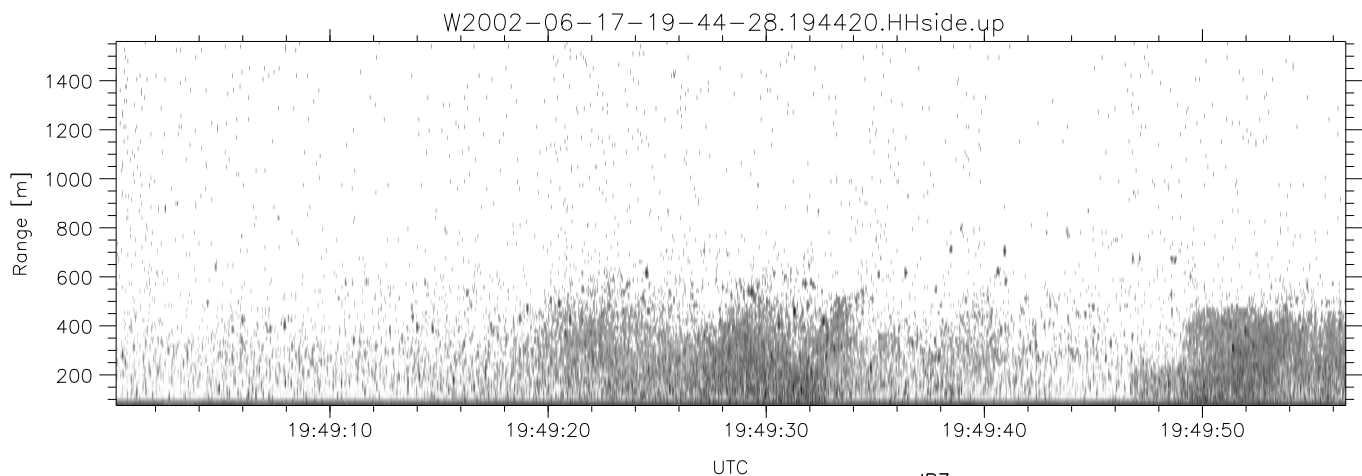
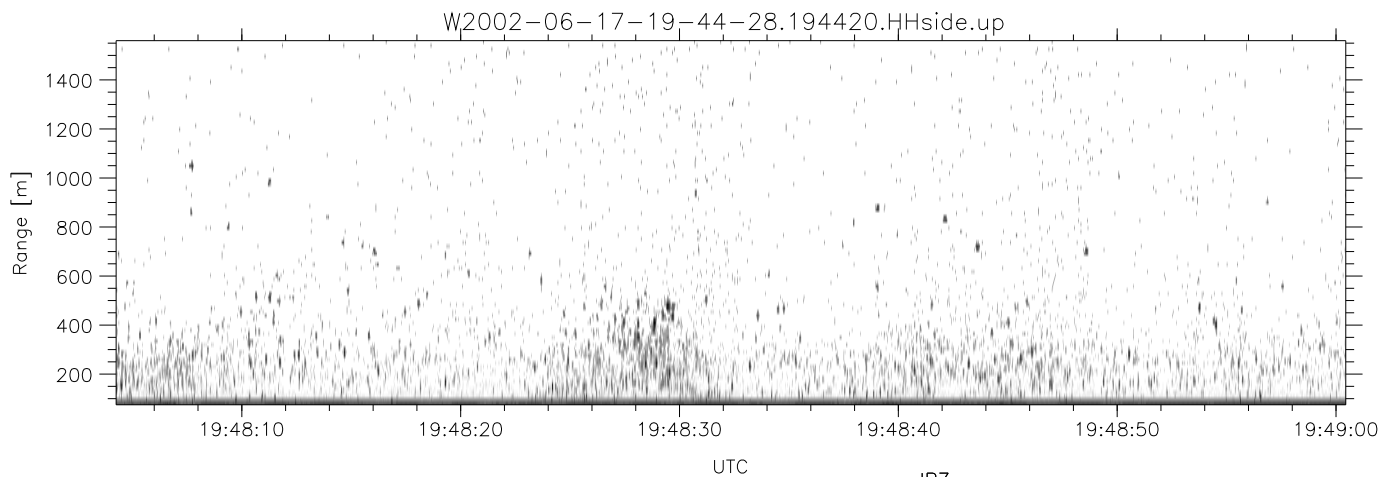
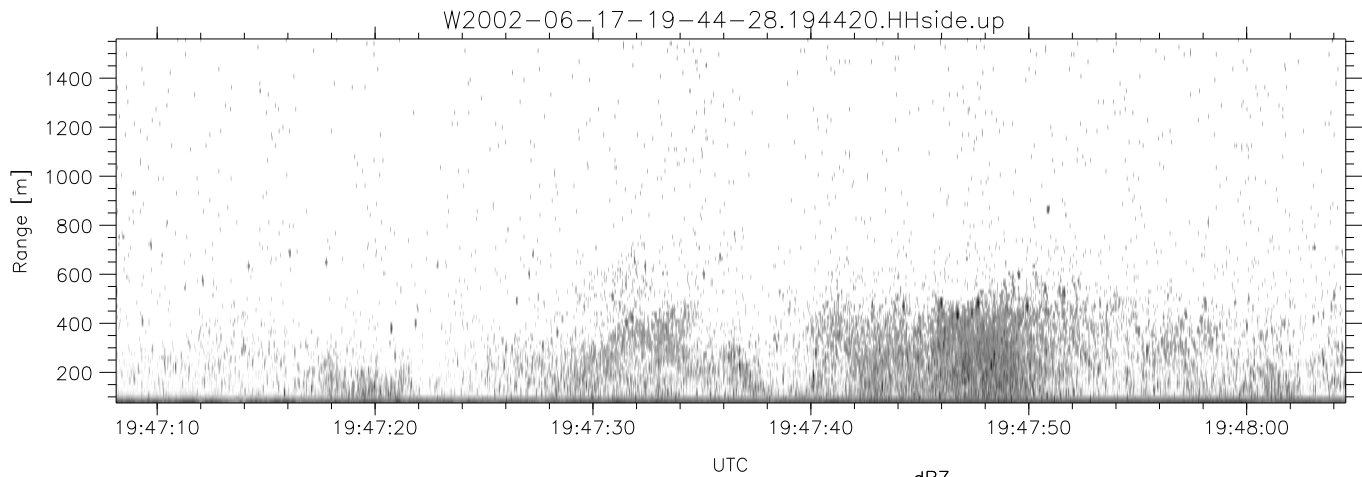


IHOP 2002 (dual-antenna config, modes 1,3,4,7) Data (cal: 49.0,50.0)

W2002-06-17-19-44-28 - PPMAG4
 IRIG:1,UTC: 19:44:20.02 to 19:57:58.52, Dur: 818s
 TimeLngth: 818.50s, TimeInt: 29ms (34.1pps)
 TimeCor=-13.0s, DSPDif(mn,min,mx):29,28,478
 PPS(min,max,std): 16,36,2.41
 Prof: 488 to 28395, NumProf(t/r): 27907/17069
 ProcTime/Recs: 19:44:20-19:52:40/0-17068
 MxACQtime: 33ms; DRate: 190.9KB/s; Flags: 0, 0, 0
 Pulse: 275ns, IFfilt: 5.0MHz; ppPol: HH HV VV
 TxPol: HHVV, PRF: 20 10 20 10 kHz
 Range: Delay 75m, Spacing 15m, Gates 100
 Ave. Pulses: 84, Rng/Prof Aspect@90m/s: 5.7

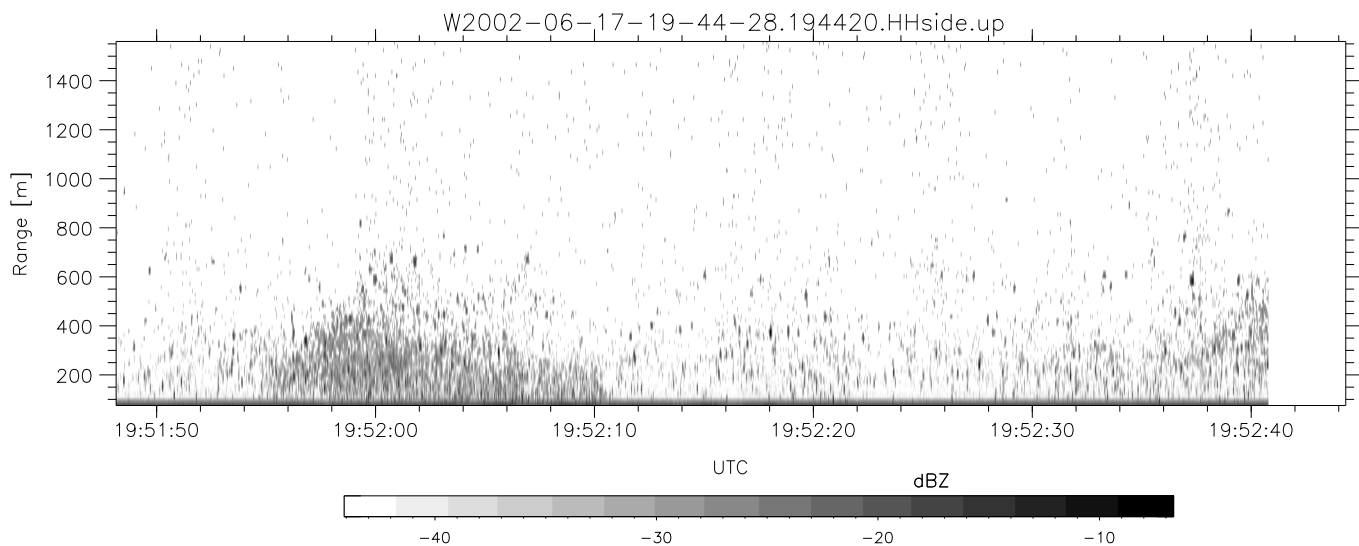
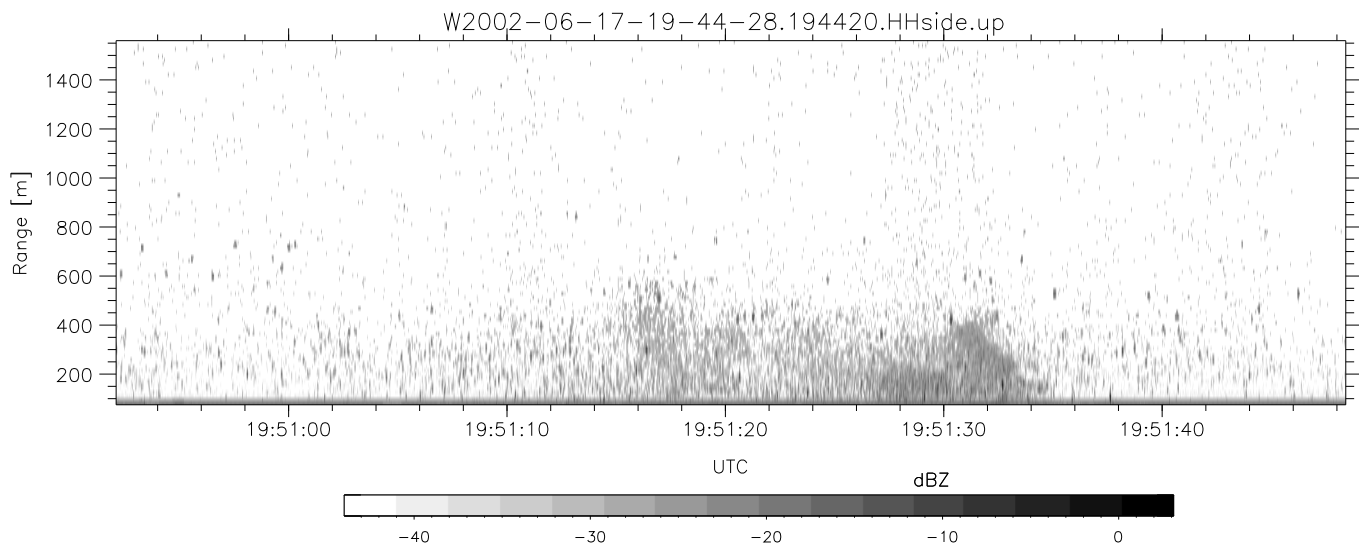
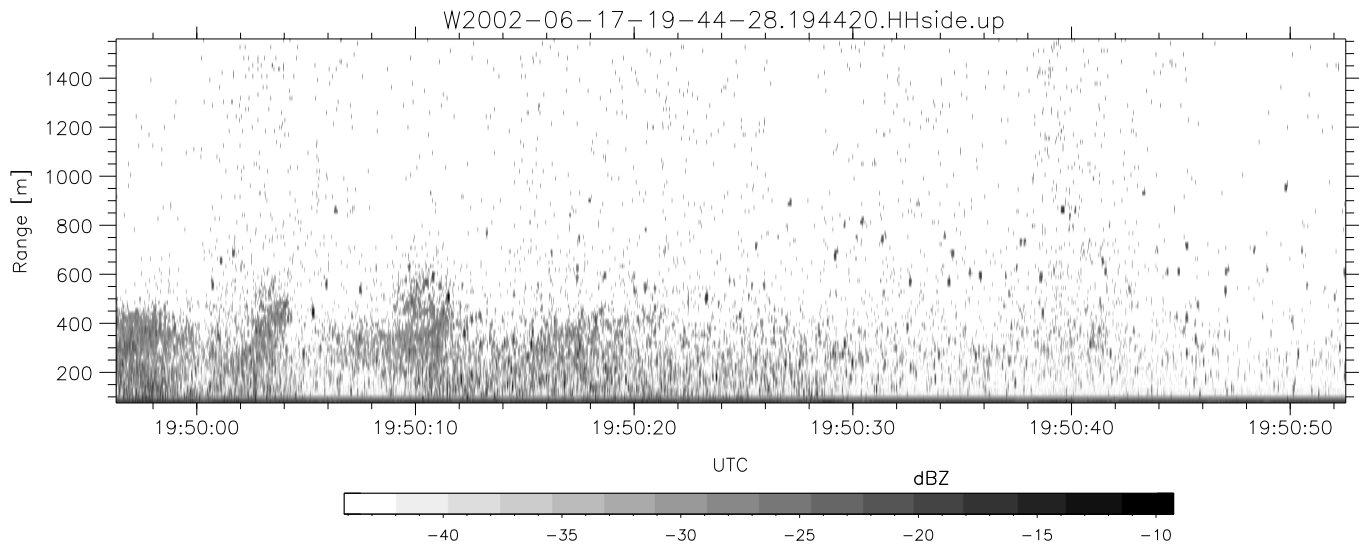
| | Min | Max | Mean | Std | Varc% |
|-----------|--------|--------|--------|--------|-------|
| hhN(dB) | -67.86 | -64.17 | -66.00 | -76.07 | 9.9 |
| vvN(dB) | -66.98 | -63.01 | -64.85 | -74.89 | 9.9 |
| hhL(dB) | -13.40 | -3.72 | -6.58 | -11.97 | 28.9 |
| vvL(dB) | -5.70 | 1.02 | -1.04 | -9.35 | 14.8 |
| ppN(m/s) | -12.17 | 12.46 | -0.06 | 4.12 | |
| ppT(m/s) | -96.13 | 98.44 | -0.46 | 32.57 | |
| hh/vv(dB) | -NaN | 45.90 | 11.86 | 31.53 | 9273 |
| vh/hh(dB) | -NaN | -32.64 | -36.66 | -36.53 | 102. |
| hv/vv(dB) | -NaN | -34.20 | -55.22 | -45.99 | 836. |
| hnjmp(dB) | -2.60 | 2.13 | -0.06 | -8.61 | 14.0 |
| vnjmp(dB) | -2.58 | 2.69 | -0.08 | -8.65 | 13.9 |



IHOP 2002 (dual-antenna config, modes 1,3,4,7) Data (cal: 49.0,50.0)

W2002-06-17-19-44-28 - PPMAG4
 IRIG:1,UTC: 19:44:20.02 to 19:57:58.52, Dur: 818s
 TimeLngth: 818.50s, TimeInt: 29ms (34.1pps)
 TimeCor=-13.0s, DSPDif(mn,min,mx):29,28,478
 PPS(min,max,std): 16,36,2.41
 Prof: 488 to 28395, NumProf(t/r): 27907/17069
 ProcTime/Recs: 19:44:20-19:52:40/0-17068
 MxACQtime: 33ms; DRate: 190.9KB/s; Flags: 0, 0, 0
 Pulse: 275ns, IFfilt: 5.0MHz; ppPol: HH HV VV
 TxPol: HHVV, PRF: 20 10 20 10 kHz
 Range: Delay 75m, Spacing 15m, Gates 100
 Ave. Pulses: 84, Rng/Prof Aspect@90m/s: 5.7

| | Min | Max | Mean | Std | Varc% |
|-----------|--------|--------|--------|--------|-------|
| hhN(dB) | -67.86 | -64.17 | -66.00 | -76.07 | 9.9 |
| vvN(dB) | -66.98 | -63.01 | -64.85 | -74.89 | 9.9 |
| hhL(dB) | -13.40 | -3.72 | -6.58 | -11.97 | 28.9 |
| vvL(dB) | -5.70 | 1.02 | -1.04 | -9.35 | 14.8 |
| ppN(m/s) | -12.17 | 12.46 | -0.06 | 4.12 | |
| ppT(m/s) | -96.13 | 98.44 | -0.46 | 32.57 | |
| hh/vv(dB) | -NaN | 45.90 | 11.86 | 31.53 | 9273 |
| vh/hh(dB) | -NaN | -32.64 | -36.66 | -36.53 | 102. |
| hv/vv(dB) | -NaN | -34.20 | -55.22 | -45.99 | 836. |
| hnjmp(dB) | -2.60 | 2.13 | -0.06 | -8.61 | 14.0 |
| vnjmp(dB) | -2.58 | 2.69 | -0.08 | -8.65 | 13.9 |



IHOP 2002 (dual-antenna config, modes 1,3,4,7) Data (cal: 49.0,50.0)

| | Min | Max | Mean | Std | Varc% |
|---|------------|---------------|--------|--------|-------|
| W2002-06-17-19-44-28 - PPMAG4 | | | | | |
| IRIG:1,UTC: 19:44:20.02 to 19:57:58.52, Dur: 818s | hhN(dB) | -67.86 -64.17 | -66.00 | -76.07 | 9.9 |
| TimeLngth: 818.50s, TimeInt: 29ms (34.1pps) | vvN(dB) | -66.98 -63.01 | -64.85 | -74.89 | 9.9 |
| TimeCor=-13.0s, DSPDif(mn,min,mx):29,28,478 | hhL(dB) | -13.40 -3.72 | -6.58 | -11.97 | 28.9 |
| PPS(min,max,std): 16,36,2.41 | vvL(dB) | -5.70 1.02 | -1.04 | -9.35 | 14.8 |
| Prof: 488 to 28395, NumProf(t/r): 27907/17069 | ppN(m/s) | -12.17 12.46 | -0.06 | 4.12 | |
| ProcTime/Recs: 19:44:20-19:52:40/0-17068 | ppT(m/s) | -96.13 98.44 | -0.46 | 32.57 | |
| MxACQtime: 33ms; DRate: 190.9KB/s; Flags: 0, 0, 0 | hh/vv(dB) | -NaN 45.90 | 11.86 | 31.53 | 9273 |
| Pulse: 275ns, IFfilt: 5.0MHz; ppPol: HH HV VV | vh/hh(dB) | -NaN -32.64 | -36.66 | -36.53 | 102. |
| TxPol: HHVV, PRF: 20 10 20 10 kHz | hv/vv(dB) | -NaN -34.20 | -55.22 | -45.99 | 836. |
| Range: Delay 75m, Spacing 15m, Gates 100 | hn_jmp(dB) | -2.60 2.13 | -0.06 | -8.61 | 14.0 |
| Ave. Pulses: 84, Rng/Prof Aspect@90m/s: 5.7 | vn_jmp(dB) | -2.58 2.69 | -0.08 | -8.65 | 13.9 |