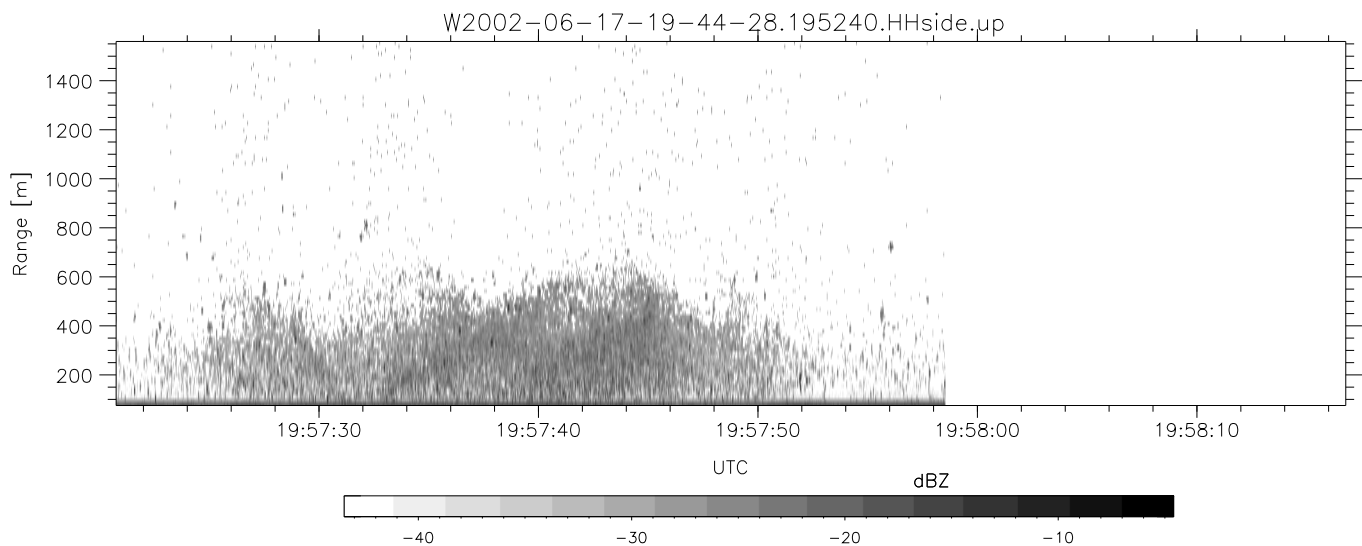
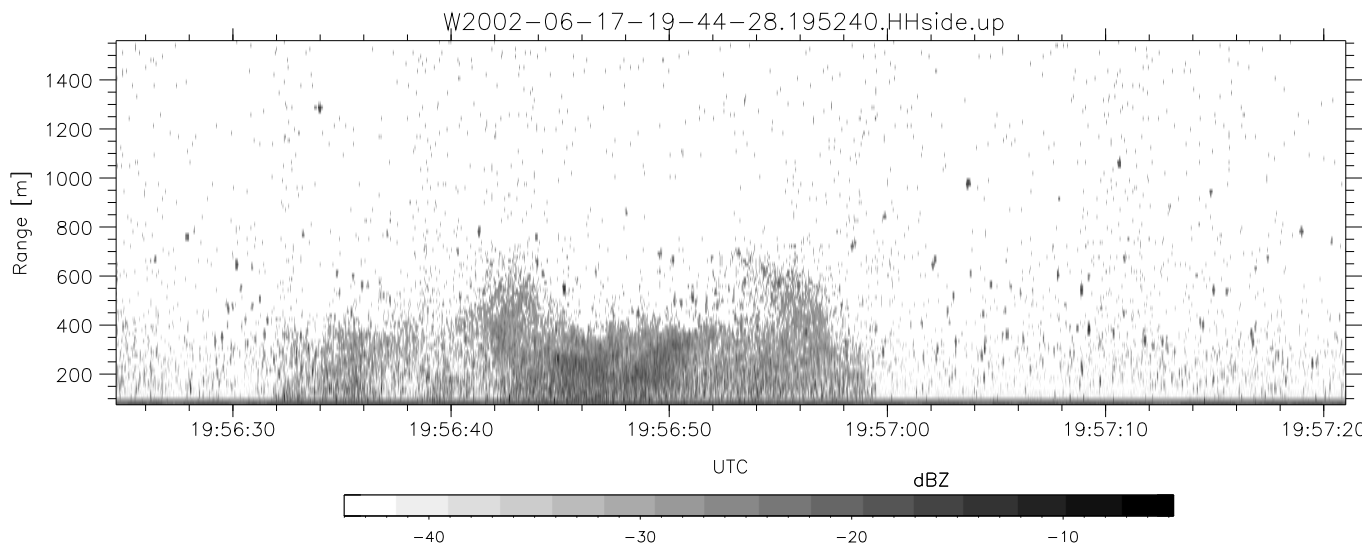
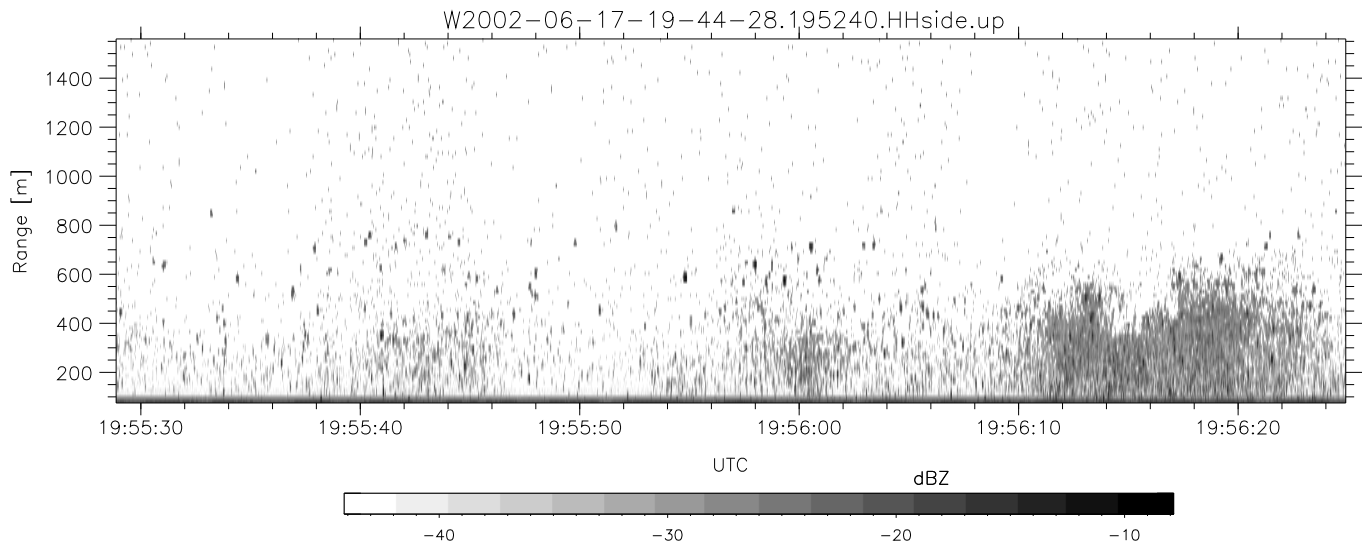


IHOP 2002 (dual-antenna config, modes 1,3,4,7) Data (cal: 49.0,50.0)

	Min	Max	Mean	Std	Varc%
W2002-06-17-19-44-28 - PPMAG4					
IRIG:1,UTC: 19:44:20.02 to 19:57:58.52, Dur: 818s	hhN (dB)	-67.67 -64.59	-65.99	-76.05	9.9
TimeLngth: 818.50s, TimeInt: 29ms (34.1pps)	vvN (dB)	-66.47 -63.24	-64.86	-74.89	9.9
TimeCor=-13.0s, DSPDif(mn,min,mx):29,28,369	hhL (dB)	-8.26 -3.65	-5.76	-14.39	13.7
PPS(min,max,std): 23,36,2.37	vvL (dB)	-4.17 0.02	-1.14	-11.23	9.8
Prof: 488 to 28395, NumProf(t/r): 27907/10838	ppN (m/s)	-11.66 12.17	-0.14	4.14	
ProcTime/Recs: 19:52:40-19:57:58/17069-27906	ppT (m/s)	-92.09 96.12	-1.13	32.72	
MxACQtime: 33ms; DRate: 190.9KB/s; Flags: 0, 0, 0	hh/vv (dB)	-NaN 53.80	17.29	33.99	4673
Pulse: 275ns, IFfilt: 5.0MHz; ppPol: HH HV VV	vh/hh (dB)	-NaN -28.15	-33.95	-34.03	98.3
TxPol: HHVV, PRF: 20 10 20 10 kHz	hv/vv (dB)	-NaN -34.99	-56.00	-46.03	993.
Range: Delay 75m, Spacing 15m, Gates 100	hnjmp (dB)	-2.03 2.25	0.14	-8.45	13.8
Ave. Pulses: 84, Rng/Prof Aspect@90m/s: 5.7	vnjmp (dB)	-2.16 2.07	0.16	-8.39	13.9



IHOP 2002 (dual-antenna config, modes 1,3,4,7) Data (cal: 49.0,50.0)

W2002-06-17-19-44-28 - PPMAG4
 IRIG:1,UTC: 19:44:20.02 to 19:57:58.52, Dur: 818s
 TimeLngth: 818.50s, TimeInt: 29ms (34.1pps)
 TimeCor=-13.0s, DSPDif(mn,min,mx):29,28,369
 PPS(min,max,std): 23,36,2.37
 Prof: 488 to 28395, NumProf(t/r): 27907/10838
 ProcTime/Recs: 19:52:40-19:57:58/17069-27906
 MxACQtime: 33ms; DRate: 190.9KB/s; Flags: 0, 0, 0
 Pulse: 275ns, IFfilt: 5.0MHz; ppPol: HH HV VV
 TxPol: HHVV, PRF: 20 10 20 10 kHz
 Range: Delay 75m, Spacing 15m, Gates 100
 Ave. Pulses: 84, Rng/Prof Aspect@90m/s: 5.7

	Min	Max	Mean	Std	Varc%
hhN(dB)	-67.67	-64.59	-65.99	-76.05	9.9
vvN(dB)	-66.47	-63.24	-64.86	-74.89	9.9
hhL(dB)	-8.26	-3.65	-5.76	-14.39	13.7
vvL(dB)	-4.17	0.02	-1.14	-11.23	9.8
ppN(m/s)	-11.66	12.17	-0.14	4.14	
ppT(m/s)	-92.09	96.12	-1.13	32.72	
hh/vv(dB)	-NaN	53.80	17.29	33.99	4673
vh/hh(dB)	-NaN	-28.15	-33.95	-34.03	98.3
hv/vv(dB)	-NaN	-34.99	-56.00	-46.03	993.
hnjmp(dB)	-2.03	2.25	0.14	-8.45	13.8
vnjmp(dB)	-2.16	2.07	0.16	-8.39	13.9