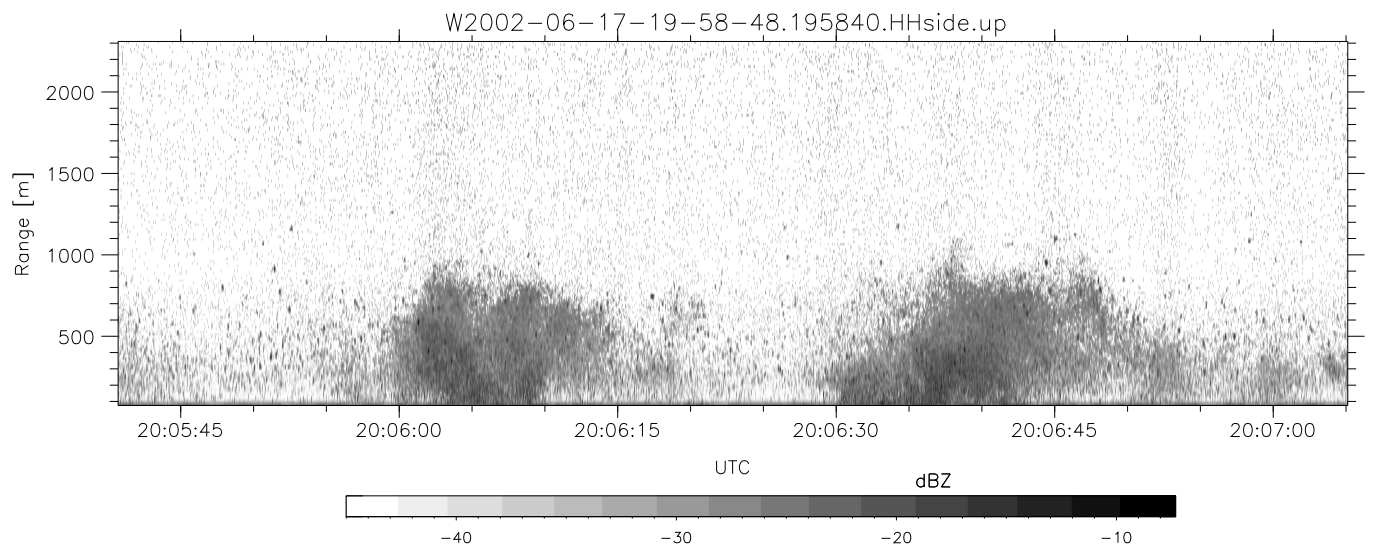
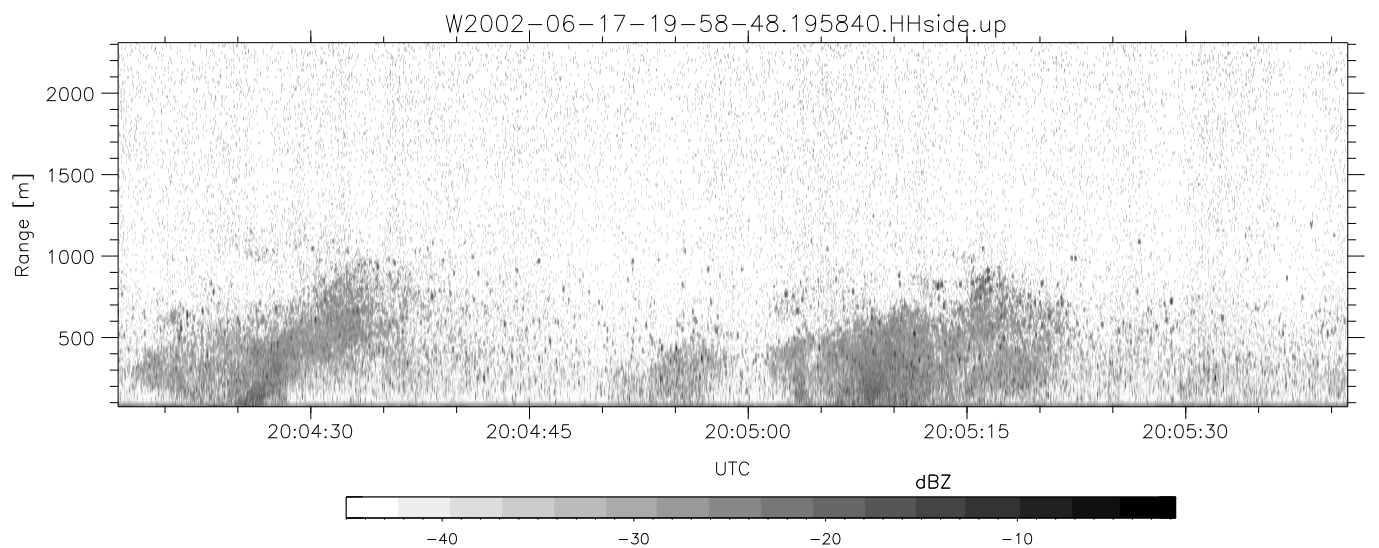
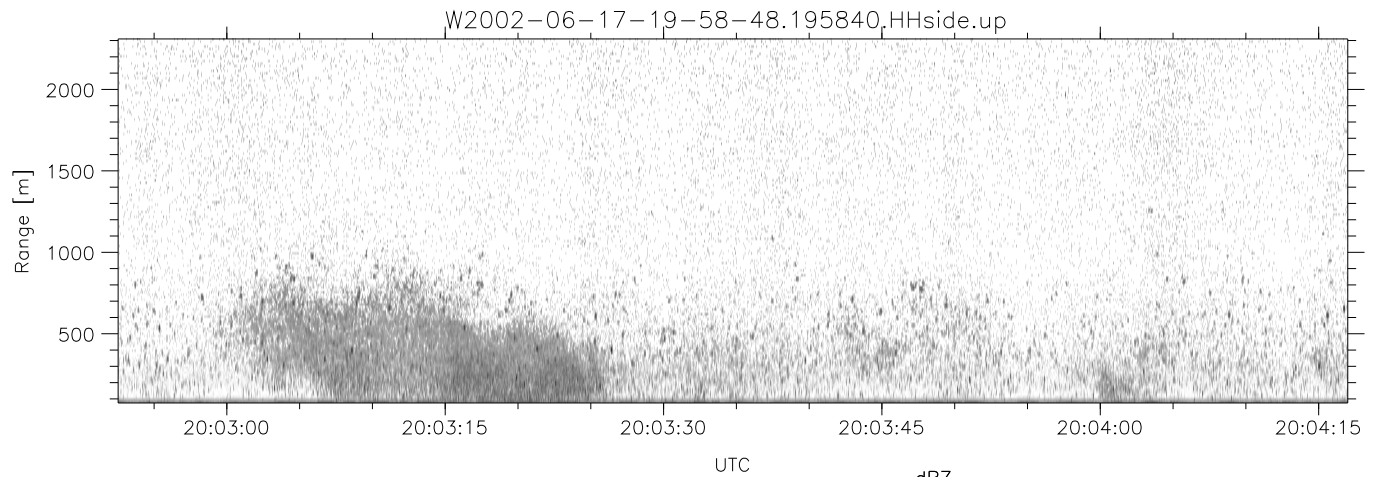


IHOP 2002 (dual-antenna config, modes 1,3,4,7) Data (cal: 49.0,50.0)

W2002-06-17-19-58-48 - SPPMAG
 IRIG:1,UTC: 19:58:40.24 to 20:20:43.07, Dur: 1323s
 TimeLngth: 1322.84s, TimeInt: 24ms (40.5pps)
 TimeCor=-13.0s, DSPDif(mn,min,mx):24,20,326
 PPS(min,max,std): 16,42,2.81
 Prof: 303 to 53877, NumProf(t/r): 53574/30122
 ProcTime/Recs: 19:58:40-20:11:03/0-30121
 MxACQtime: 17ms; DRate: 97.0KB/s; Flags: 0, 0, 0
 Pulse: 275ns, IFfilt: 5.0MHz; ppPol: HH
 TxPol: H, PRF: 20 kHz
 Range: Delay 75m, Spacing 15m, Gates 150
 Ave. Pulses: 348, Rng/Prof Aspect@90m/s: 6.7

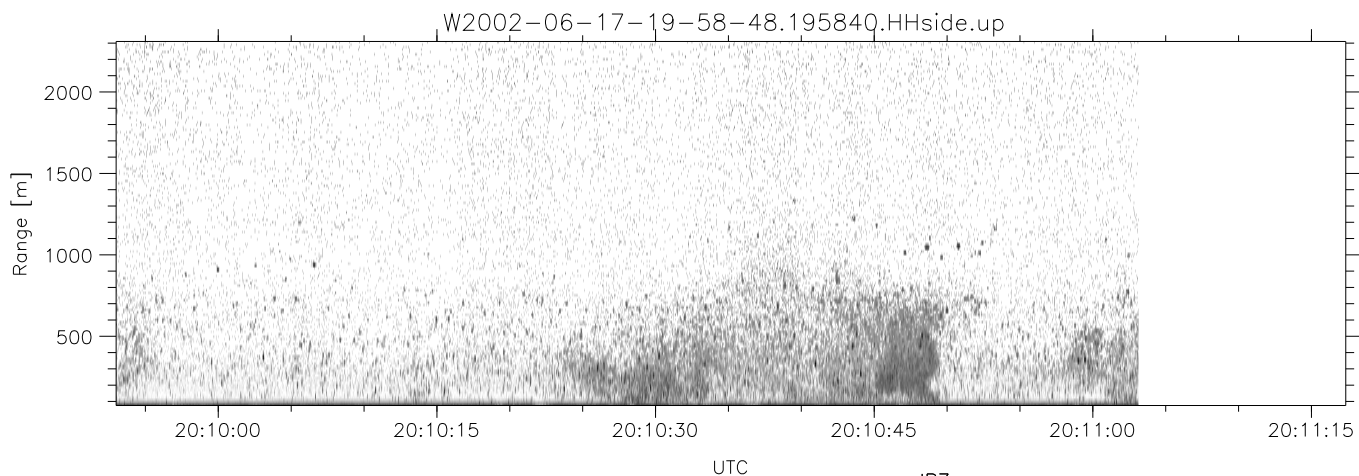
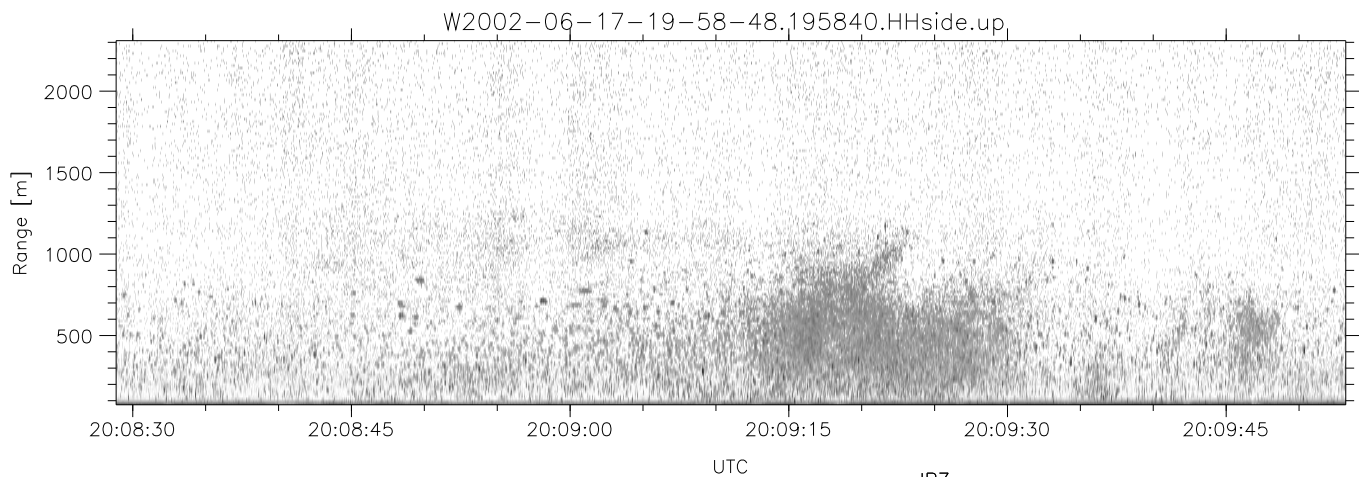
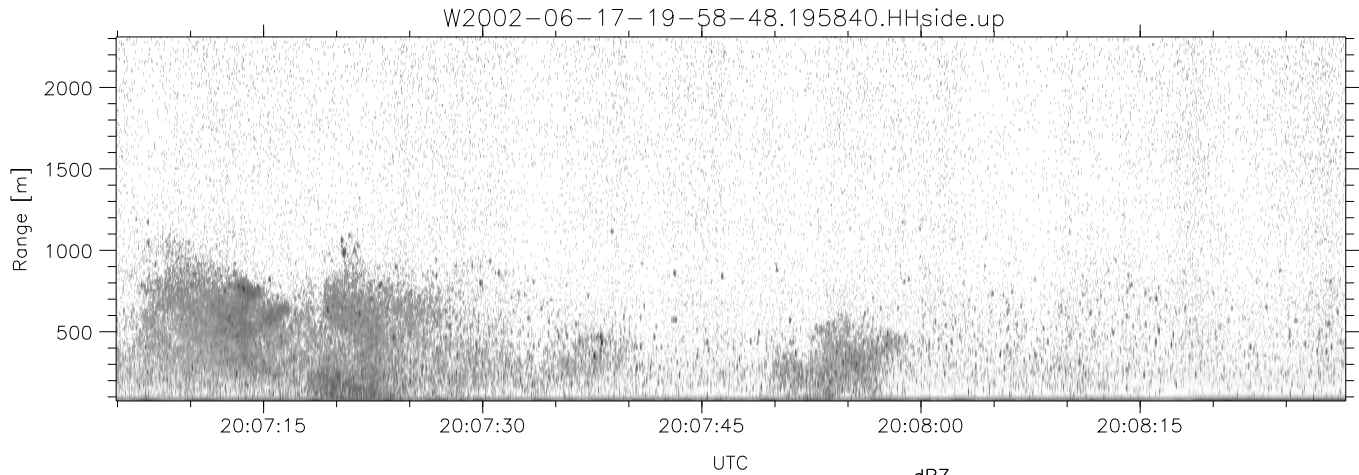
	Min	Max	Mean	Std	Varc%
hhN (dB)	-66.87	-65.11	-65.97	-78.99	5.0
vvN (dB)	-65.82	-63.93	-64.88	-77.85	5.1
hhL (dB)	-13.94	-4.96	-9.26	-14.12	32.7
vhL (dB)	-24.56	-3.90	-11.22	-13.22	63.1
ppN (m/s)	-15.80	15.80	0.00	8.95	
ppT (m/s)	-0.04	0.02	-0.00	0.01	
vh/hh (dB)	-NaN	0.18	-15.63	-8.12	564.
hnjmp (dB)	-0.96	1.25	0.12	-11.51	6.9
vnjmp (dB)	-0.99	1.23	0.13	-11.47	6.9



IHOP 2002 (dual-antenna config, modes 1,3,4,7) Data (cal: 49.0,50.0)

W2002-06-17-19-58-48 - SPPMAG
IRIG:1,UTC: 19:58:40.24 to 20:20:43.07, Dur: 1323s
TimeLngth: 1322.84s, TimeInt: 24ms (40.5pps)
TimeCor=-13.0s, DSPDif(mn,min,mx):24,20,326
PPS(min,max,std): 16,42,2.81
Prof: 303 to 53877, NumProf(t/r): 53574/30122
ProcTime/Recs: 19:58:40-20:11:03/0-30121
MxACQtime: 17ms; DRate: 97.0KB/s; Flags: 0, 0, 0
Pulse: 275ns, IFfilt: 5.0MHz; ppPol: HH
TxPol: H, PRF: 20 kHz
Range: Delay 75m, Spacing 15m, Gates 150
Ave. Pulses: 348, Rng/Prof Aspect@90m/s: 6.7

	Min	Max	Mean	Std	Varc%
hhN(dB)	-66.87	-65.11	-65.97	-78.99	5.0
vvN(dB)	-65.82	-63.93	-64.88	-77.85	5.1
hhL(dB)	-13.94	-4.96	-9.26	-14.12	32.7
vhL(dB)	-24.56	-3.90	-11.22	-13.22	63.1
ppN(m/s)	-15.80	15.80	0.00	8.95	
ppT(m/s)	-0.04	0.02	-0.00	0.01	
vh/hh(dB)	-NaN	0.18	-15.63	-8.12	564.
hn_jmp(dB)	-0.96	1.25	0.12	-11.51	6.9
vn_jmp(dB)	-0.99	1.23	0.13	-11.47	6.9



IHOP 2002 (dual-antenna config, modes 1,3,4,7) Data (cal: 49.0,50.0)

W2002-06-17-19-58-48 - SPPMAG
 IRIG:1,UTC: 19:58:40.24 to 20:20:43.07, Dur: 1323s
 TimeLngth: 1322.84s, TimeInt: 24ms (40.5pps)
 TimeCor=-13.0s, DSPDif(mn,min,mx):24,20,326
 PPS(min,max,std): 16,42,2.81
 Prof: 303 to 53877, NumProf(t/r): 53574/30122
 ProcTime/Recs: 19:58:40-20:11:03/0-30121
 MxACQtime: 17ms; DRate: 97.0KB/s; Flags: 0, 0, 0
 Pulse: 275ns, IFfilt: 5.0MHz; ppPol: HH
 TxPol: H, PRF: 20 kHz
 Range: Delay 75m, Spacing 15m, Gates 150
 Ave. Pulses: 348, Rng/Prof Aspect@90m/s: 6.7

	Min	Max	Mean	Std	Varc%
hhN(dB)	-66.87	-65.11	-65.97	-78.99	5.0
vvN(dB)	-65.82	-63.93	-64.88	-77.85	5.1
hhL(dB)	-13.94	-4.96	-9.26	-14.12	32.7
vhL(dB)	-24.56	-3.90	-11.22	-13.22	63.1
ppN(m/s)	-15.80	15.80	0.00	8.95	
ppT(m/s)	-0.04	0.02	-0.00	0.01	
vh/hh(dB)	-NaN	0.18	-15.63	-8.12	564.
hnjmp(dB)	-0.96	1.25	0.12	-11.51	6.9
vnjmp(dB)	-0.99	1.23	0.13	-11.47	6.9