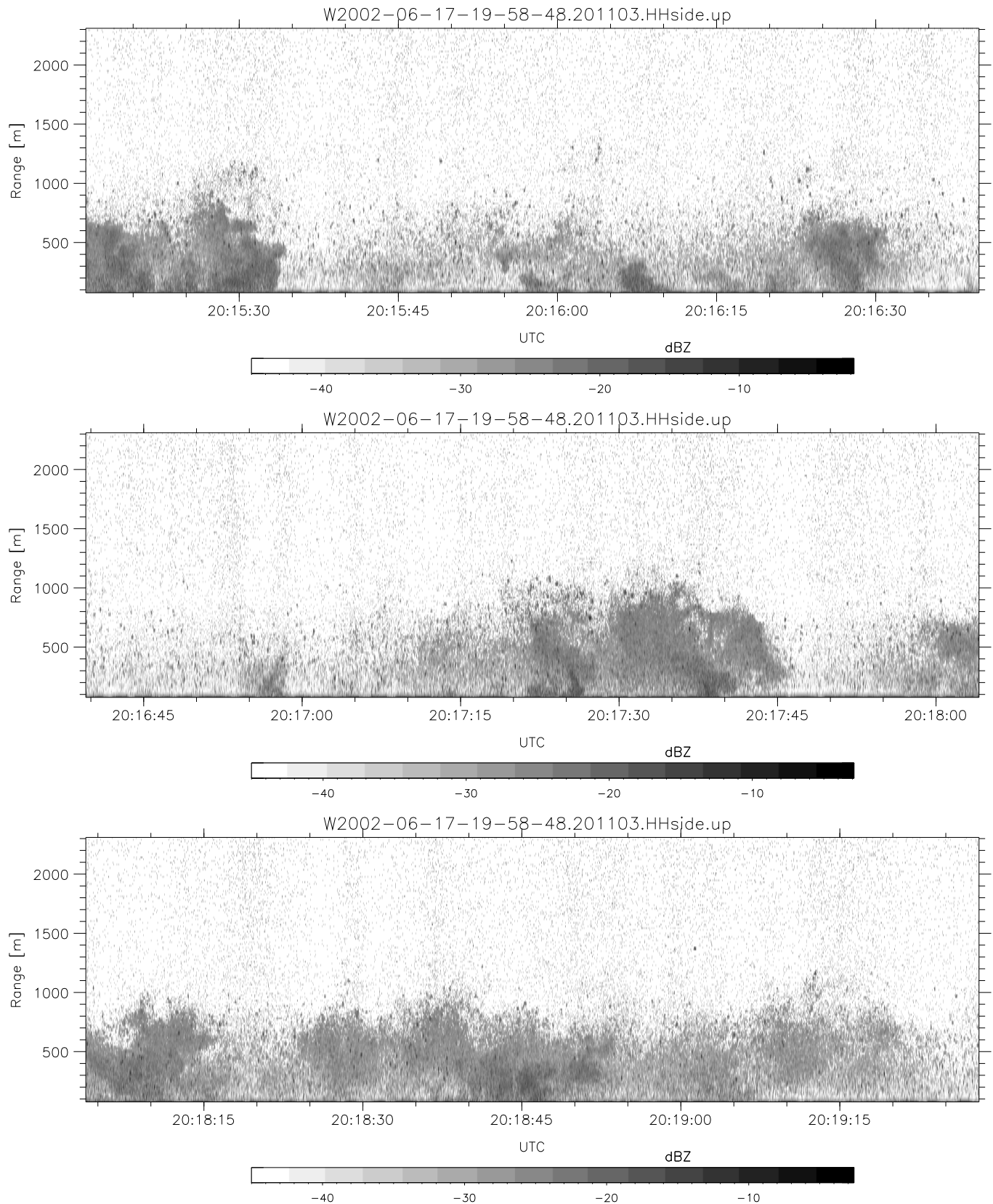


IHOP 2002 (dual-antenna config, modes 1,3,4,7) Data (cal: 49.0,50.0)

W2002-06-17-19-58-48 - SPPMAG
 IRIG:1,UTC: 19:58:40.24 to 20:20:43.07, Dur: 1323s
 TimeLngth: 1322.84s, TimeInt: 24ms (40.5pps)
 TimeCor=-13.0s, DSPDif(mn,min,mx):24,20,338
 PPS(min,max,std): 16,42,3.07
 Prof: 303 to 53877, NumProf(t/r): 53574/23452
 ProcTime/Recs: 20:11:03-20:20:43/30122-53573
 MxACQtime: 17ms; DRate: 97.0KB/s; Flags: 0, 0, 0
 Pulse: 275ns, IFfilt: 5.0MHz; ppPol: HH
 TxPol: H, PRF: 20 kHz
 Range: Delay 75m, Spacing 15m, Gates 150
 Ave. Pulses: 348, Rng/Prof Aspect@90m/s: 6.7

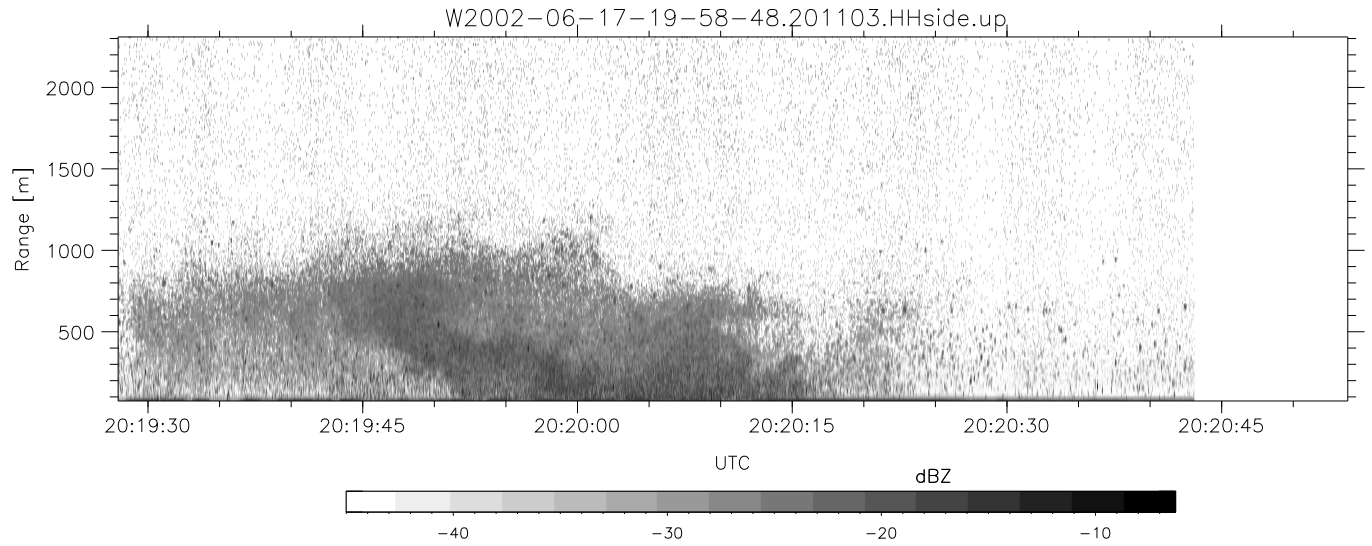
	Min	Max	Mean	Std	Varc%
hhN(dB)	-66.95	-65.14	-65.99	-79.04	5.0
vvN(dB)	-65.82	-64.09	-64.90	-77.88	5.0
hhL(dB)	-18.75	-5.54	-8.86	-12.10	47.4
vhL(dB)	-27.00	-4.47	-9.28	-11.76	56.5
ppN(m/s)	-15.80	15.79	-0.02	9.00	
ppT(m/s)	-0.08	0.03	-0.01	0.01	
vh/hh(dB)	-NaN	-9.21	-25.69	-18.70	500.
hnjmp(dB)	-1.06	1.25	0.11	-11.57	6.8
vnjmp(dB)	-1.02	1.22	0.14	-11.49	6.9



IHOP 2002 (dual-antenna config, modes 1,3,4,7) Data (cal: 49.0,50.0)

W2002-06-17-19-58-48 - SPPMAG
 IRIG:1,UTC: 19:58:40.24 to 20:20:43.07, Dur: 1323s
 TimeLngth: 1322.84s, TimeInt: 24ms (40.5pps)
 TimeCor=-13.0s, DSPDif(mn,min,mx):24,20,338
 PPS(min,max,std): 16,42,3.07
 Prof: 303 to 53877, NumProf(t/r): 53574/23452
 ProcTime/Recs: 20:11:03-20:20:43/30122-53573
 MxACQtime: 17ms; DRate: 97.0KB/s; Flags: 0, 0, 0
 Pulse: 275ns, IFfilt: 5.0MHz; ppPol: HH
 TxPol: H, PRF: 20 kHz
 Range: Delay 75m, Spacing 15m, Gates 150
 Ave. Pulses: 348, Rng/Prof Aspect@90m/s: 6.7

	Min	Max	Mean	Std	Varc%
hhN(dB)	-66.95	-65.14	-65.99	-79.04	5.0
vvN(dB)	-65.82	-64.09	-64.90	-77.88	5.0
hhL(dB)	-18.75	-5.54	-8.86	-12.10	47.4
vhL(dB)	-27.00	-4.47	-9.28	-11.76	56.5
ppN(m/s)	-15.80	15.79	-0.02	9.00	
ppT(m/s)	-0.08	0.03	-0.01	0.01	
vh/hh(dB)	-NaN	-9.21	-25.69	-18.70	500.
hn_jmp(dB)	-1.06	1.25	0.11	-11.57	6.8
vn_jmp(dB)	-1.02	1.22	0.14	-11.49	6.9



IHOP 2002 (dual-antenna config, modes 1,3,4,7) Data (cal: 49.0,50.0)

W2002-06-17-19-58-48 - SPPMAG
 IRIG:1,UTC: 19:58:40.24 to 20:20:43.07, Dur: 1323s
 TimeLngth: 1322.84s, TimeInt: 24ms (40.5pps)
 TimeCor=-13.0s, DSPDif(mn,min,mx):24,20,338
 PPS(min,max,std): 16,42,3.07
 Prof: 303 to 53877, NumProf(t/r): 53574/23452
 ProcTime/Recs: 20:11:03-20:20:43/30122-53573
 MxACQtime: 17ms; DRate: 97.0KB/s; Flags: 0, 0, 0
 Pulse: 275ns, IFfilt: 5.0MHz; ppPol: HH
 TxPol: H, PRF: 20 kHz
 Range: Delay 75m, Spacing 15m, Gates 150
 Ave. Pulses: 348, Rng/Prof Aspect@90m/s: 6.7

	Min	Max	Mean	Std	Varc%
hhN(dB)	-66.95	-65.14	-65.99	-79.04	5.0
vvN(dB)	-65.82	-64.09	-64.90	-77.88	5.0
hhL(dB)	-18.75	-5.54	-8.86	-12.10	47.4
vhL(dB)	-27.00	-4.47	-9.28	-11.76	56.5
ppN(m/s)	-15.80	15.79	-0.02	9.00	
ppT(m/s)	-0.08	0.03	-0.01	0.01	
vh/hh(dB)	-NaN	-9.21	-25.69	-18.70	500.
hnjmp(dB)	-1.06	1.25	0.11	-11.57	6.8
vnjmp(dB)	-1.02	1.22	0.14	-11.49	6.9