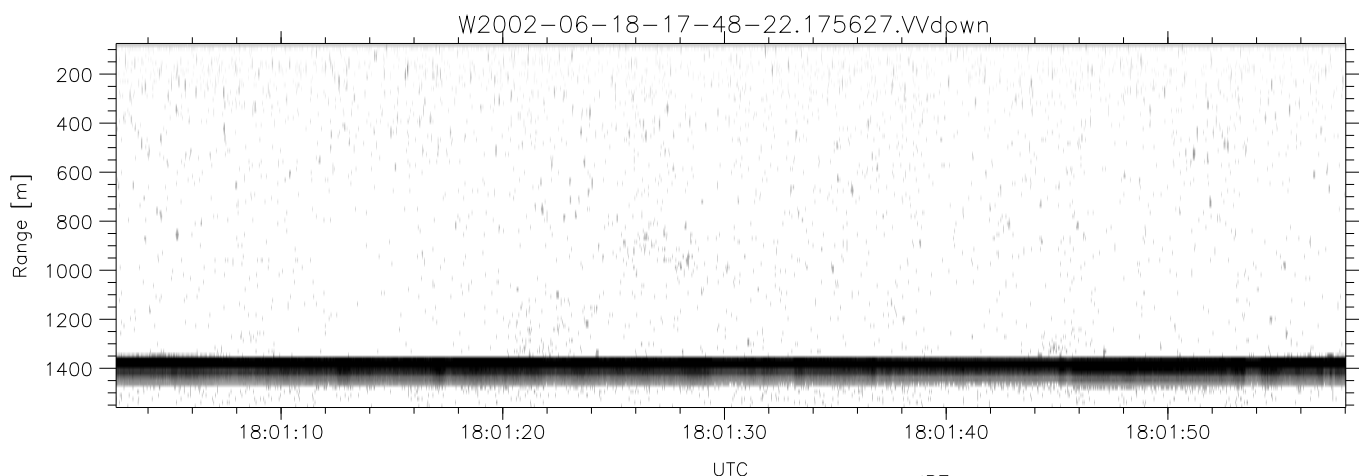
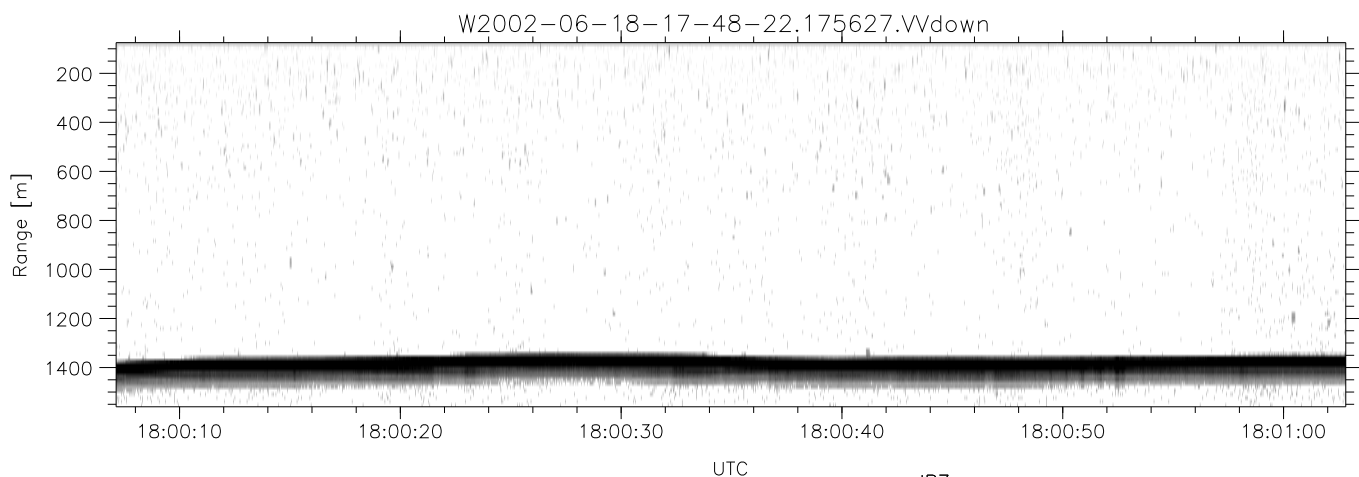
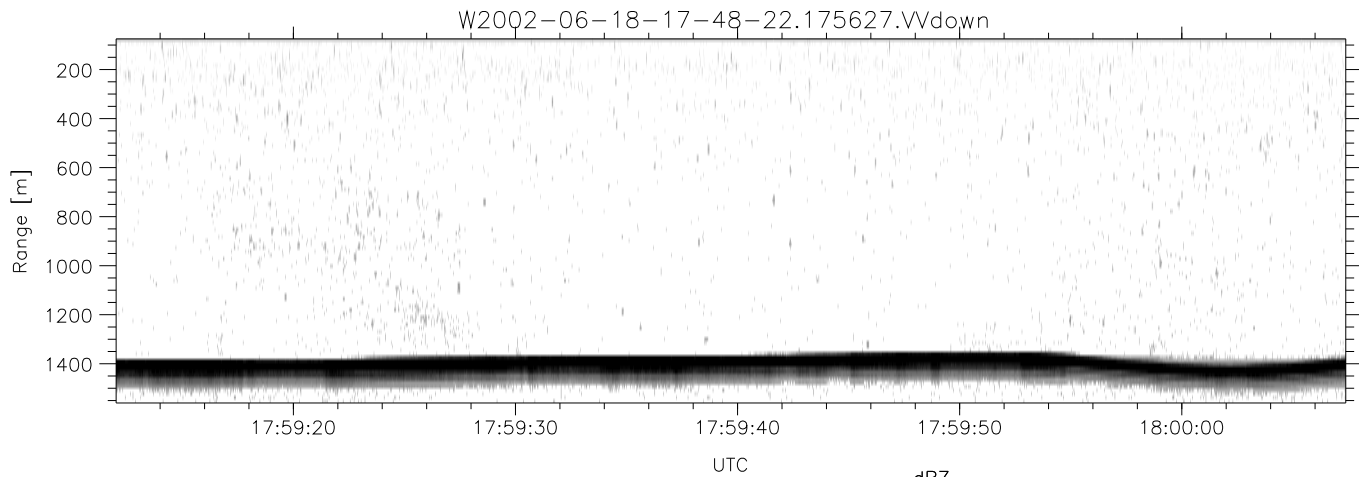


IHOP 2002 (dual-antenna config, modes 1,3,4,7) Data (cal: 55.0,50.0)

W2002-06-18-17-48-22 - PPMAG4
 IRIG:1,UTC: 17:48:13.47 to 18:21:17.53, Dur: 1984s
 TimeLngth: 1984.06s, TimeInt: 29ms (34.1pps)
 TimeCor=-13.0s, DSPDif(mn,min,mx):29,28,351
 PPS(min,max,std): 24,36,2.24
 Prof: 611 to 68239, NumProf(t/r): 67628/17069
 ProcTime/Recs: 17:56:27-18:04:40/17069-34137
 MxACQtime: 33ms; DRate: 190.8KB/s; Flags: 0, 0, 0
 Pulse: 275ns, IFfilt: 5.0MHz; ppPol: HH HV VV
 TxPol: HHVV, PRF: 20 10 20 10 kHz
 Range: Delay 75m, Spacing 15m, Gates 100
 Ave. Pulses: 84, Rng/Prof Aspect@90m/s: 5.7

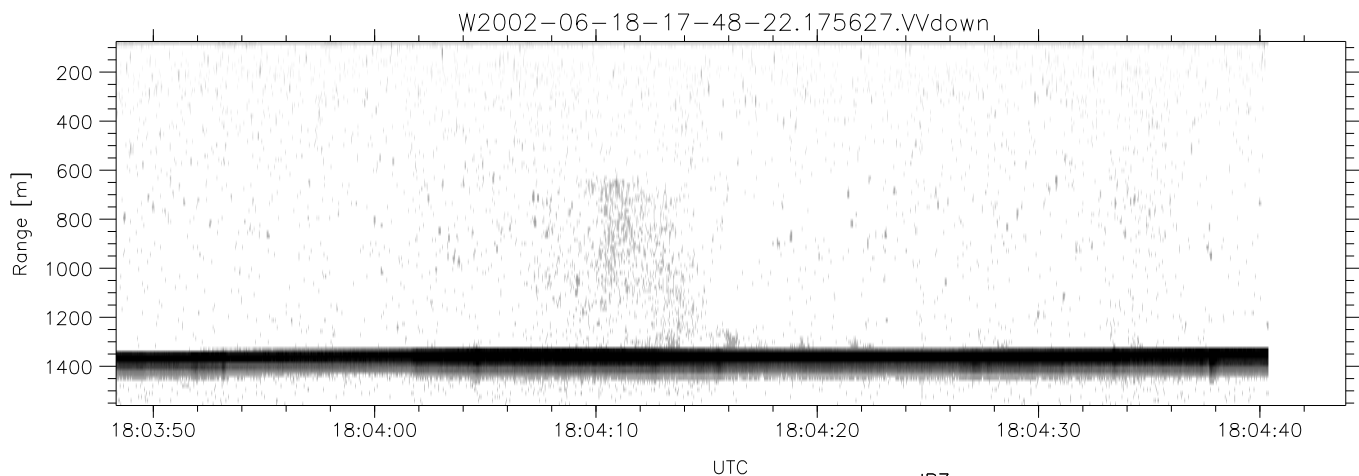
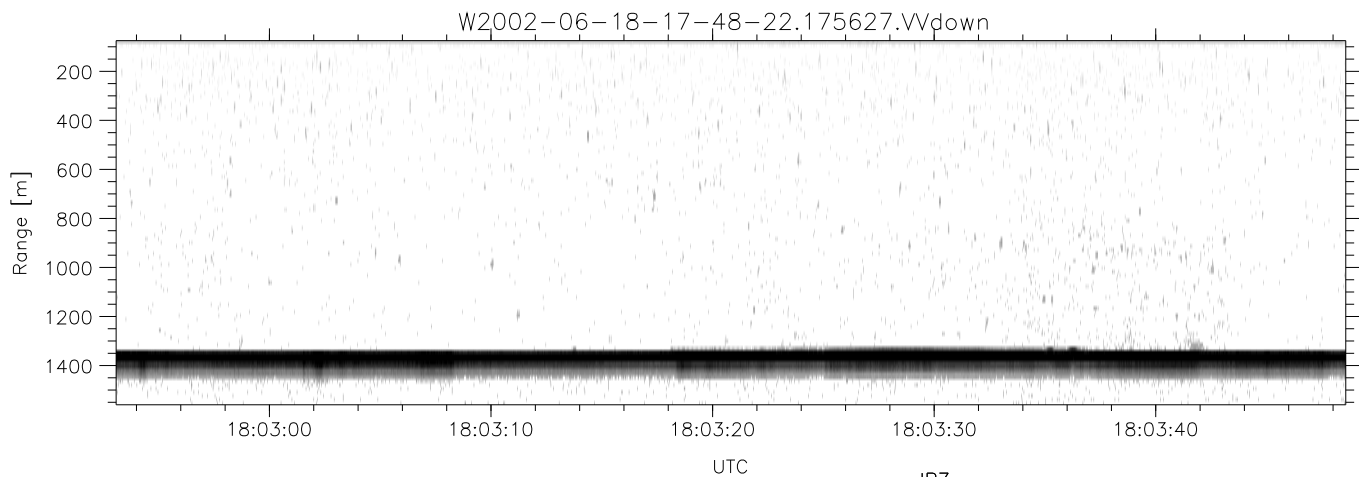
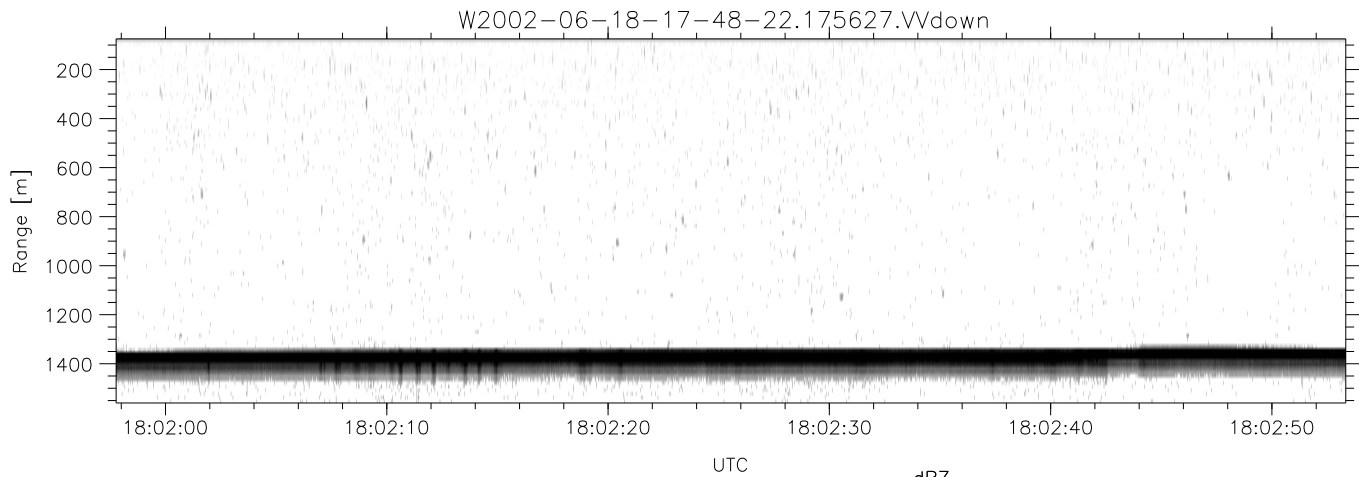
	Min	Max	Mean	Std	Varc%
hhN(dB)	-67.11	-63.63	-65.26	-75.37	9.7
vvN(dB)	-66.32	-62.62	-64.41	-74.43	10.0
hhL(dB)	-10.99	-2.09	-5.84	-9.41	44.0
vvL(dB)	-21.19	-0.47	-8.28	-7.87	109.
ppN(m/s)	-12.32	12.56	0.01	4.12	
ppT(m/s)	-97.32	99.24	0.07	32.57	
hh/vv(dB)	-NaN	84.56	25.79	71.15	3433
vh/hh(dB)	-NaN	-28.15	-45.81	-39.41	436.
hv/vv(dB)	-NaN	-21.31	-47.44	-40.99	442.
hnjmp(dB)	-2.35	2.12	-0.07	-8.69	13.7
vnjmp(dB)	-2.53	2.13	-0.10	-8.70	13.8



IHOP 2002 (dual-antenna config, modes 1,3,4,7) Data (cal: 55.0,50.0)

W2002-06-18-17-48-22 - PPMAG4
 IRIG:1,UTC: 17:48:13.47 to 18:21:17.53, Dur: 1984s
 TimeLngth: 1984.06s, TimeInt: 29ms (34.1pps)
 TimeCor=-13.0s, DSPDif(mn,min,mx):29,28,351
 PPS(min,max,std): 24,36,2.24
 Prof: 611 to 68239, NumProf(t/r): 67628/17069
 ProcTime/Recs: 17:56:27-18:04:40/17069-34137
 MxACQtime: 33ms; DRate: 190.8KB/s; Flags: 0, 0, 0
 Pulse: 275ns, IFfilt: 5.0MHz; ppPol: HH HV VV
 TxPol: HHVV, PRF: 20 10 20 10 kHz
 Range: Delay 75m, Spacing 15m, Gates 100
 Ave. Pulses: 84, Rng/Prof Aspect@90m/s: 5.7

	Min	Max	Mean	Std	Varc%
hhN(dB)	-67.11	-63.63	-65.26	-75.37	9.7
vvN(dB)	-66.32	-62.62	-64.41	-74.43	10.0
hhL(dB)	-10.99	-2.09	-5.84	-9.41	44.0
vvL(dB)	-21.19	-0.47	-8.28	-7.87	109.
ppN(m/s)	-12.32	12.56	0.01	4.12	
ppT(m/s)	-97.32	99.24	0.07	32.57	
hh/vv(dB)	-NaN	84.56	25.79	71.15	3433
vh/hh(dB)	-NaN	-28.15	-45.81	-39.41	436.
hv/vv(dB)	-NaN	-21.31	-47.44	-40.99	442.
hnjmp(dB)	-2.35	2.12	-0.07	-8.69	13.7
vnjmp(dB)	-2.53	2.13	-0.10	-8.70	13.8



IHOP 2002 (dual-antenna config, modes 1,3,4,7) Data (cal: 55.0,50.0)

W2002-06-18-17-48-22 - PPMAG4
 IRIG:1,UTC: 17:48:13.47 to 18:21:17.53, Dur: 1984s
 TimeLngth: 1984.06s, TimeInt: 29ms (34.1pps)
 TimeCor=-13.0s, DSPDif(mn,min,mx):29,28,351
 PPS(min,max,std): 24,36,2.24
 Prof: 611 to 68239, NumProf(t/r): 67628/17069
 ProcTime/Recs: 17:56:27-18:04:40/17069-34137
 MxACQtime: 33ms; DRate: 190.8KB/s; Flags: 0, 0, 0
 Pulse: 275ns, IFfilt: 5.0MHz; ppPol: HH HV VV
 TxPol: HHVV, PRF: 20 10 20 10 kHz
 Range: Delay 75m, Spacing 15m, Gates 100
 Ave. Pulses: 84, Rng/Prof Aspect@90m/s: 5.7

	Min	Max	Mean	Std	Varc%
hhN(dB)	-67.11	-63.63	-65.26	-75.37	9.7
vvN(dB)	-66.32	-62.62	-64.41	-74.43	10.0
hhL(dB)	-10.99	-2.09	-5.84	-9.41	44.0
vvL(dB)	-21.19	-0.47	-8.28	-7.87	109.
ppN(m/s)	-12.32	12.56	0.01	4.12	
ppT(m/s)	-97.32	99.24	0.07	32.57	
hh/vv(dB)	-NaN	84.56	25.79	71.15	3433
vh/hh(dB)	-NaN	-28.15	-45.81	-39.41	436.
hv/vv(dB)	-NaN	-21.31	-47.44	-40.99	442.
hnjmp(dB)	-2.35	2.12	-0.07	-8.69	13.7
vnjmp(dB)	-2.53	2.13	-0.10	-8.70	13.8