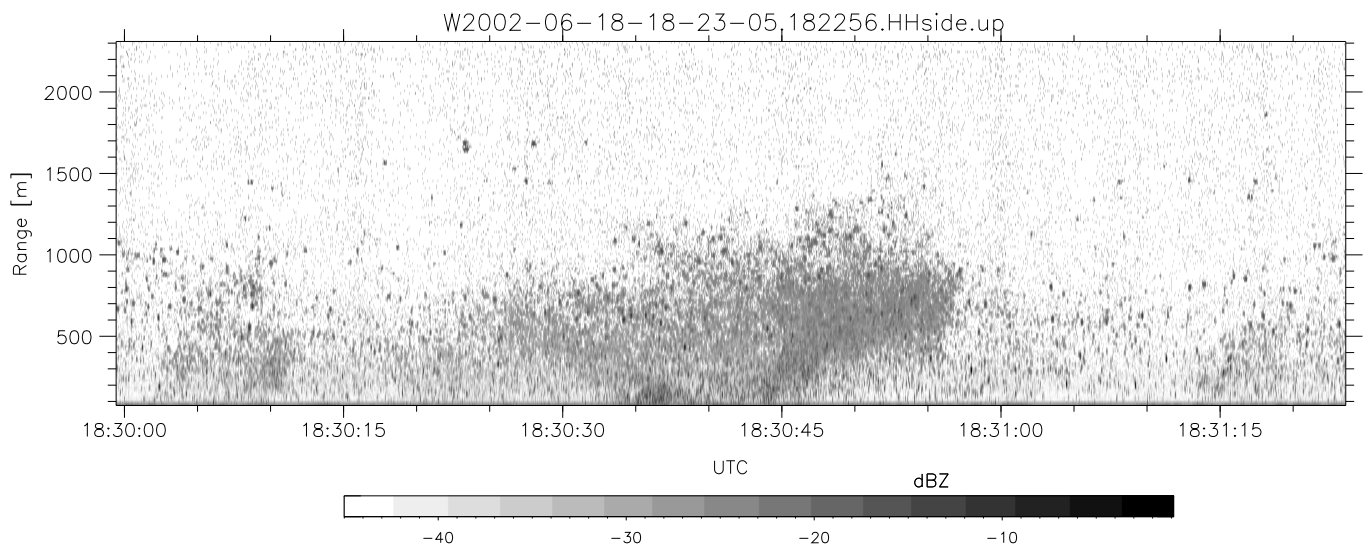
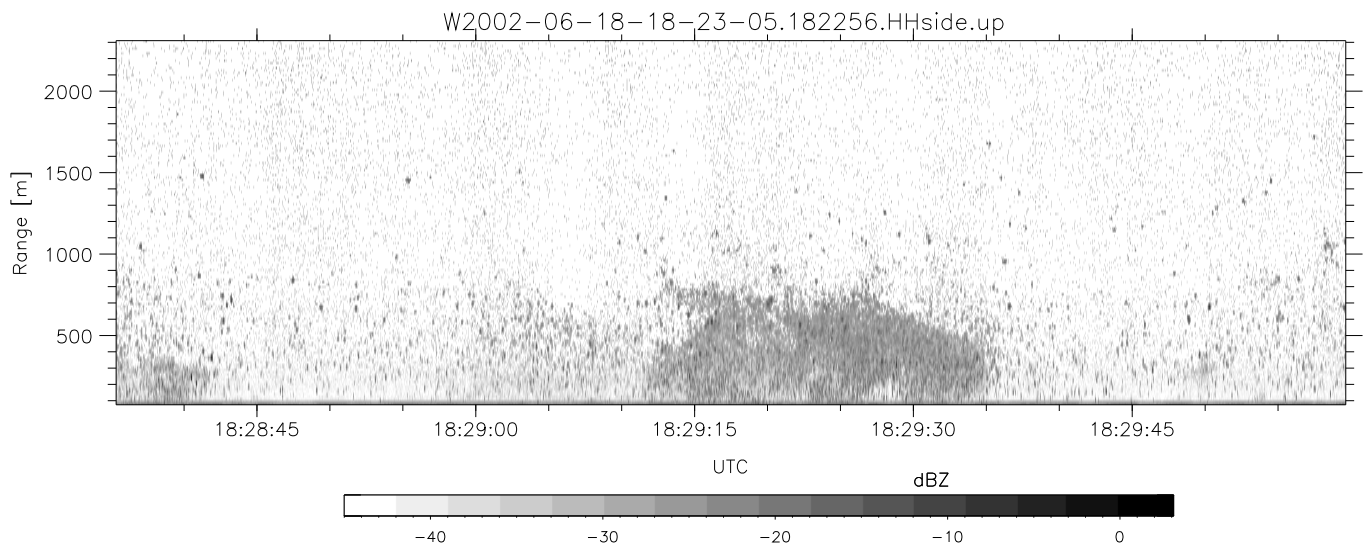
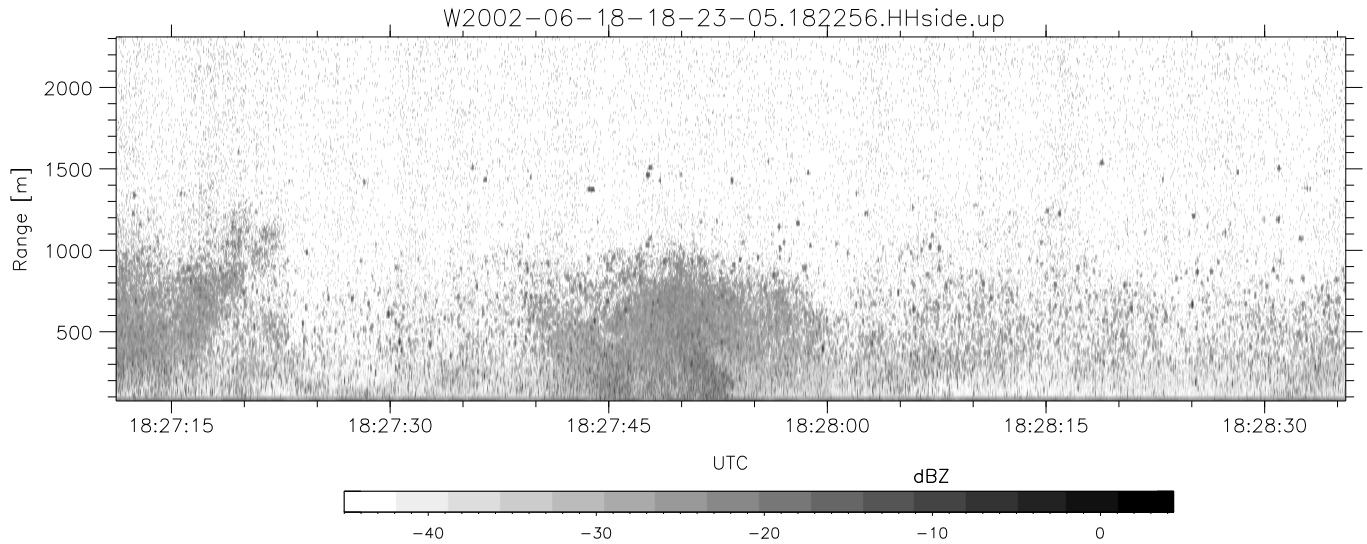


IHOP 2002 (dual-antenna config, modes 1,3,4,7) Data (cal: 49.0,50.0)

W2002-06-18-18-23-05 - SPPMAG  
 IRIG:1,UTC: 18:22:56.46 to 18:57:26.42, Dur: 2070s  
 TimeLngth: 2069.96s, TimeInt: 24ms (40.8pps)  
 TimeCor=-13.0s, DSPDif(mn,min,mx):24,20,536  
 PPS(min,max,std): 18,42,2.63  
 Prof: 315 to 84853, NumProf(t/r): 84538/30122  
 ProcTime/Recs: 18:22:56-18:35:14/0-30121  
 MxACQtime: 17ms; DRate: 97.8KB/s; Flags: 0, 0, 0  
 Pulse: 275ns, IFfilt: 5.0MHz; ppPol: HH  
 TxPol: H, PRF: 20 kHz  
 Range: Delay 75m, Spacing 15m, Gates 150  
 Ave. Pulses: 348, Rng/Prof Aspect@90m/s: 6.8

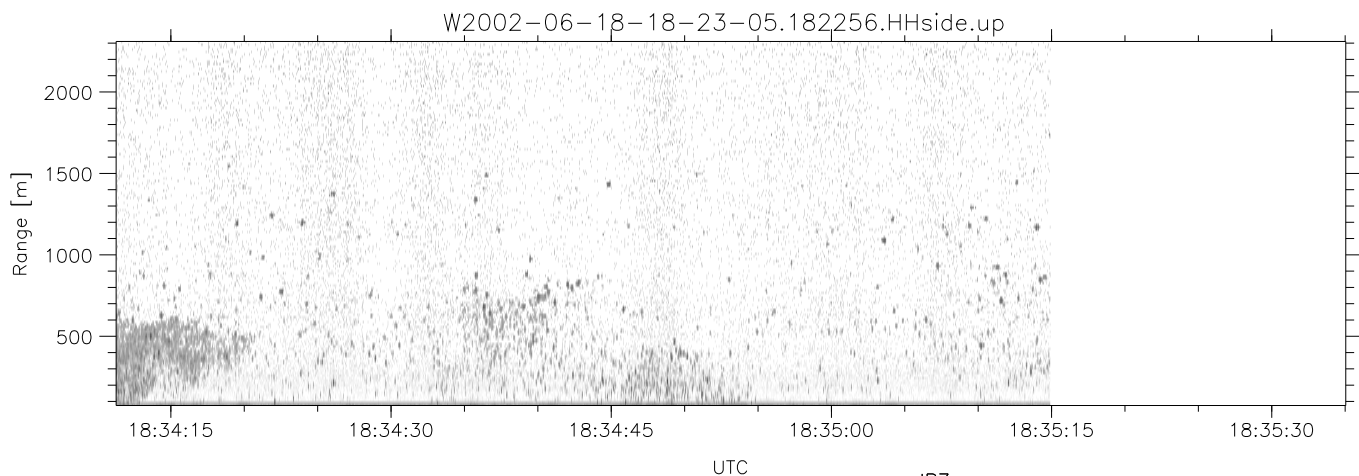
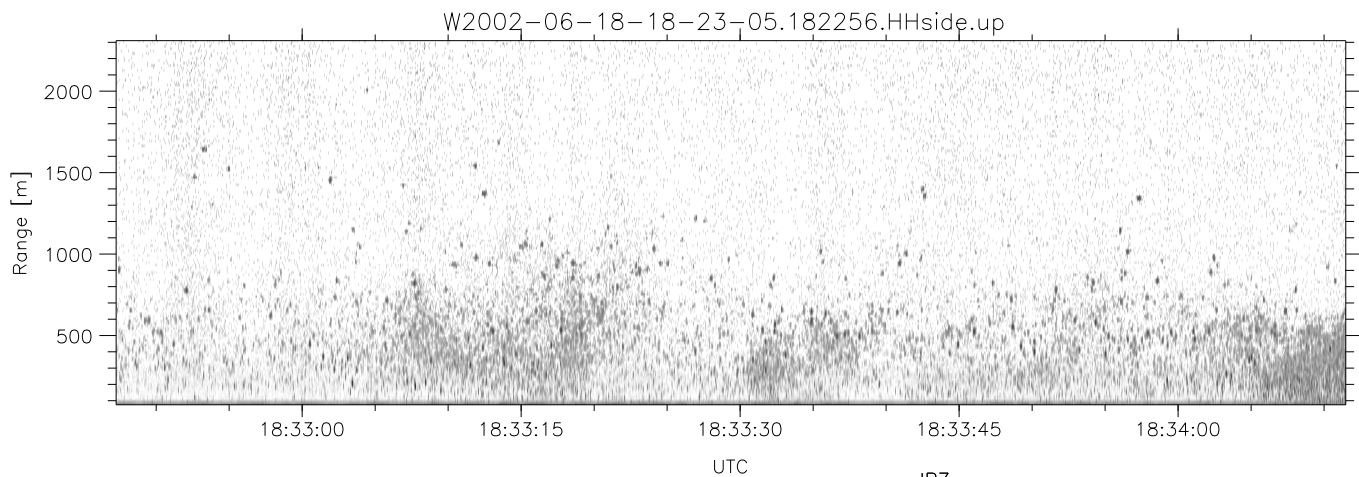
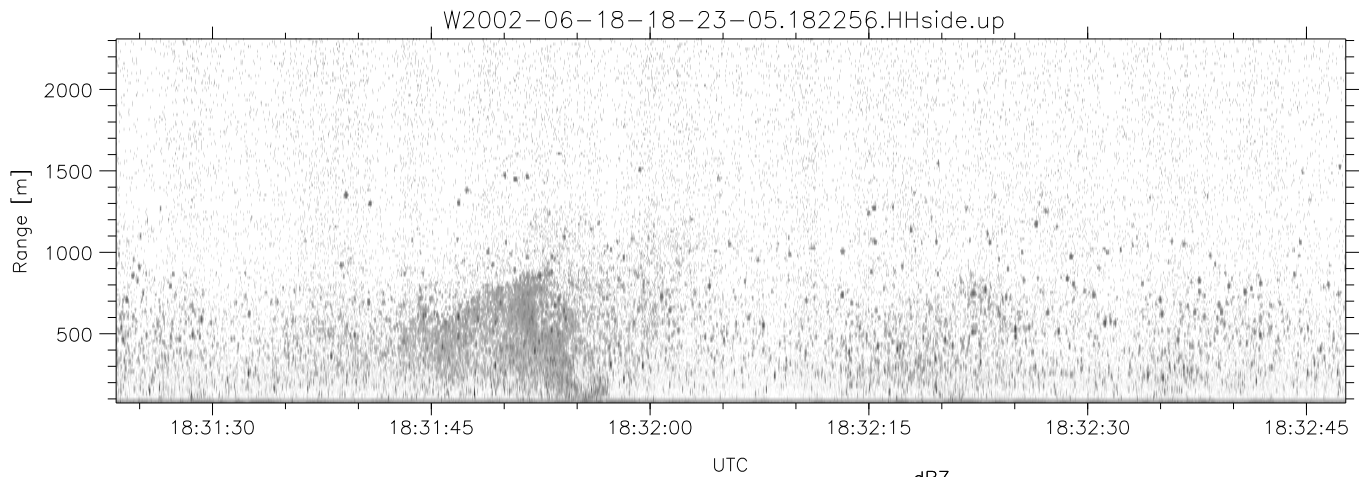
	Min	Max	Mean	Std	Varc%
hhN(dB)	-66.59	-64.91	-65.76	-78.71	5.1
vvN(dB)	-65.47	-63.66	-64.58	-77.48	5.1
hhL(dB)	-12.08	-1.56	-6.82	-8.74	64.3
vhL(dB)	-24.73	-4.98	-12.94	-13.94	79.4
ppN(m/s)	-15.80	15.80	-0.03	9.09	
ppT(m/s)	-0.04	0.03	-0.00	0.01	
vh/hh(dB)	-NaN	-7.46	-24.52	-16.61	618.
hnjmp(dB)	-1.00	1.21	0.13	-11.55	6.8
vnjmp(dB)	-1.01	1.38	0.14	-11.50	6.8



IHOP 2002 (dual-antenna config, modes 1,3,4,7) Data (cal: 49.0,50.0)

W2002-06-18-18-23-05 - SPPMAG  
 IRIG:1,UTC: 18:22:56.46 to 18:57:26.42, Dur: 2070s  
 TimeLngth: 2069.96s, TimeInt: 24ms (40.8pps)  
 TimeCor=-13.0s, DSPDif(mn,min,mx):24,20,536  
 PPS(min,max,std): 18,42,2.63  
 Prof: 315 to 84853, NumProf(t/r): 84538/30122  
 ProcTime/Recs: 18:22:56-18:35:14/0-30121  
 MxACQtime: 17ms; DRate: 97.8KB/s; Flags: 0, 0, 0  
 Pulse: 275ns, IFfilt: 5.0MHz; ppPol: HH  
 TxPol: H, PRF: 20 kHz  
 Range: Delay 75m, Spacing 15m, Gates 150  
 Ave. Pulses: 348, Rng/Prof Aspect@90m/s: 6.8

	Min	Max	Mean	Std	Varc%
hhN(dB)	-66.59	-64.91	-65.76	-78.71	5.1
vvN(dB)	-65.47	-63.66	-64.58	-77.48	5.1
hhL(dB)	-12.08	-1.56	-6.82	-8.74	64.3
vhL(dB)	-24.73	-4.98	-12.94	-13.94	79.4
ppN(m/s)	-15.80	15.80	-0.03	9.09	
ppT(m/s)	-0.04	0.03	-0.00	0.01	
vh/hh(dB)	-NaN	-7.46	-24.52	-16.61	618.
hnjmp(dB)	-1.00	1.21	0.13	-11.55	6.8
vnjmp(dB)	-1.01	1.38	0.14	-11.50	6.8



IHOP 2002 (dual-antenna config, modes 1,3,4,7) Data (cal: 49.0,50.0)

W2002-06-18-18-23-05 - SPPMAG  
 IRIG:1,UTC: 18:22:56.46 to 18:57:26.42, Dur: 2070s  
 TimeLngth: 2069.96s, TimeInt: 24ms (40.8pps)  
 TimeCor=-13.0s, DSPDif(mn,min,mx):24,20,536  
 PPS(min,max,std): 18,42,2.63  
 Prof: 315 to 84853, NumProf(t/r): 84538/30122  
 ProcTime/Recs: 18:22:56-18:35:14/0-30121  
 MxACQtime: 17ms; DRate: 97.8KB/s; Flags: 0, 0, 0  
 Pulse: 275ns, IFfilt: 5.0MHz; ppPol: HH  
 TxPol: H, PRF: 20 kHz  
 Range: Delay 75m, Spacing 15m, Gates 150  
 Ave. Pulses: 348, Rng/Prof Aspect@90m/s: 6.8

	Min	Max	Mean	Std	Varc%
hhN(dB)	-66.59	-64.91	-65.76	-78.71	5.1
vvN(dB)	-65.47	-63.66	-64.58	-77.48	5.1
hhL(dB)	-12.08	-1.56	-6.82	-8.74	64.3
vhL(dB)	-24.73	-4.98	-12.94	-13.94	79.4
ppN(m/s)	-15.80	15.80	-0.03	9.09	
ppT(m/s)	-0.04	0.03	-0.00	0.01	
vh/hh(dB)	-NaN	-7.46	-24.52	-16.61	618.
hnjmp(dB)	-1.00	1.21	0.13	-11.55	6.8
vnjmp(dB)	-1.01	1.38	0.14	-11.50	6.8