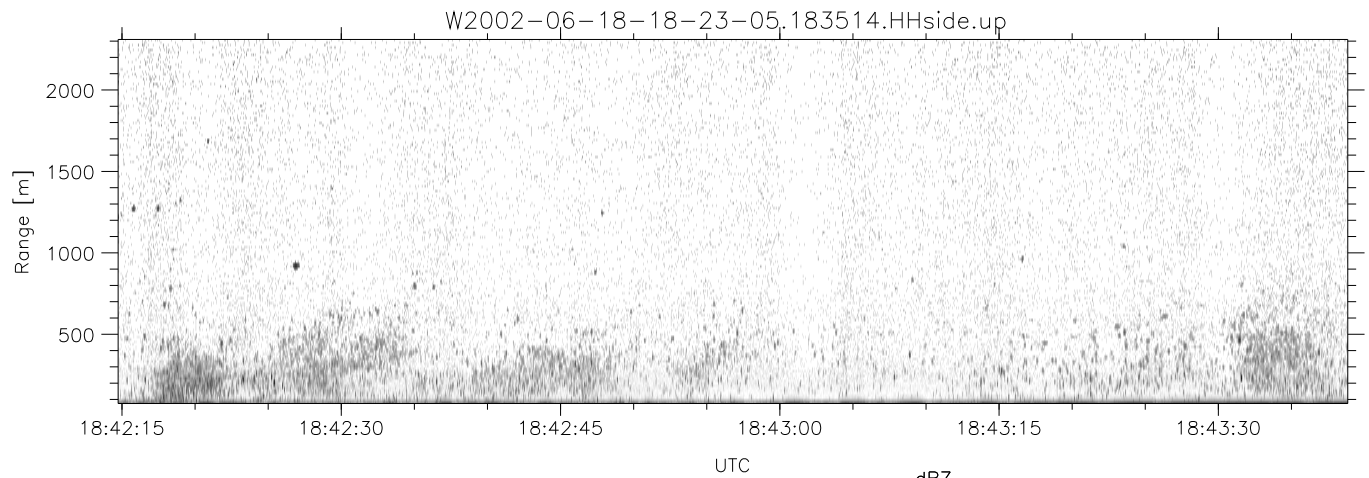
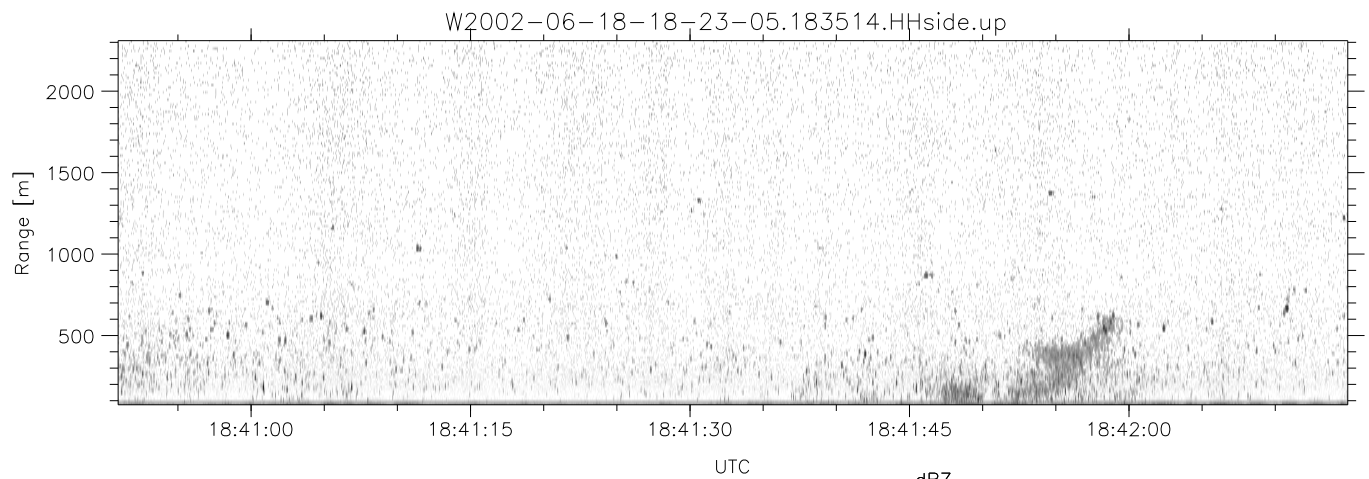
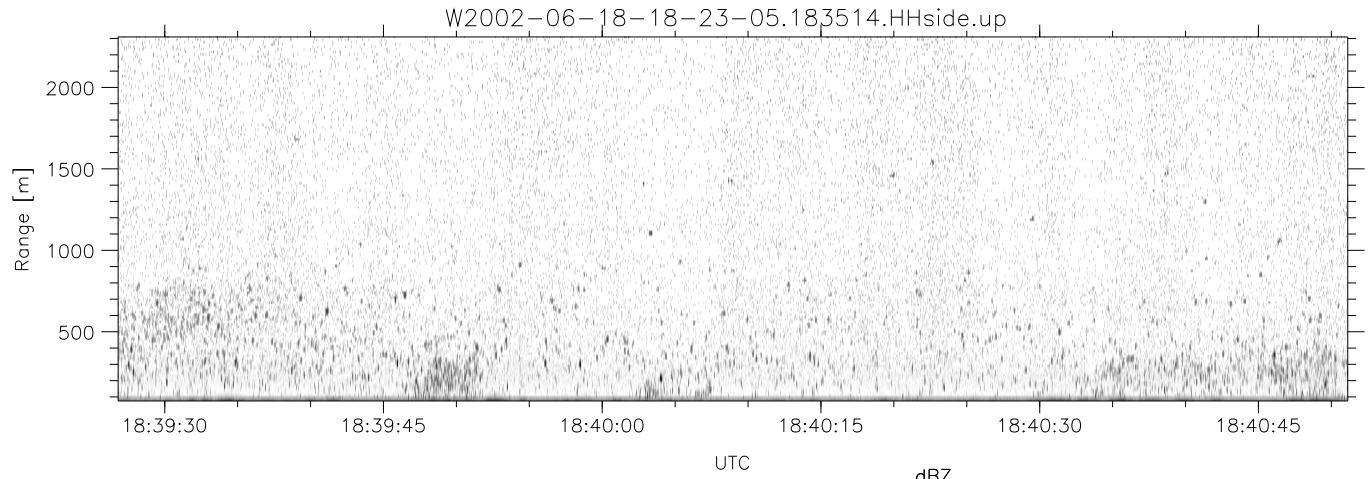


IHOP 2002 (dual-antenna config, modes 1,3,4,7) Data (cal: 49.0,50.0)

W2002-06-18-18-23-05 - SPPMAG  
 IRIG:1,UTC: 18:22:56.46 to 18:57:26.42, Dur: 2070s  
 TimeLngth: 2069.96s, TimeInt: 24ms (40.8pps)  
 TimeCor=-13.0s, DSPDif(mn,min,mx):23,20,506  
 PPS(min,max,std): 18,42,2.66  
 Prof: 315 to 84853, NumProf(t/r): 84538/30122  
 ProcTime/Recs: 18:35:14-18:47:32/30122-60243  
 MxACQtime: 17ms; DRate: 97.8KB/s; Flags: 0, 0, 0  
 Pulse: 275ns, IFfilt: 5.0MHz; ppPol: HH  
 TxPol: H, PRF: 20 kHz  
 Range: Delay 75m, Spacing 15m, Gates 150  
 Ave. Pulses: 348, Rng/Prof Aspect@90m/s: 6.8

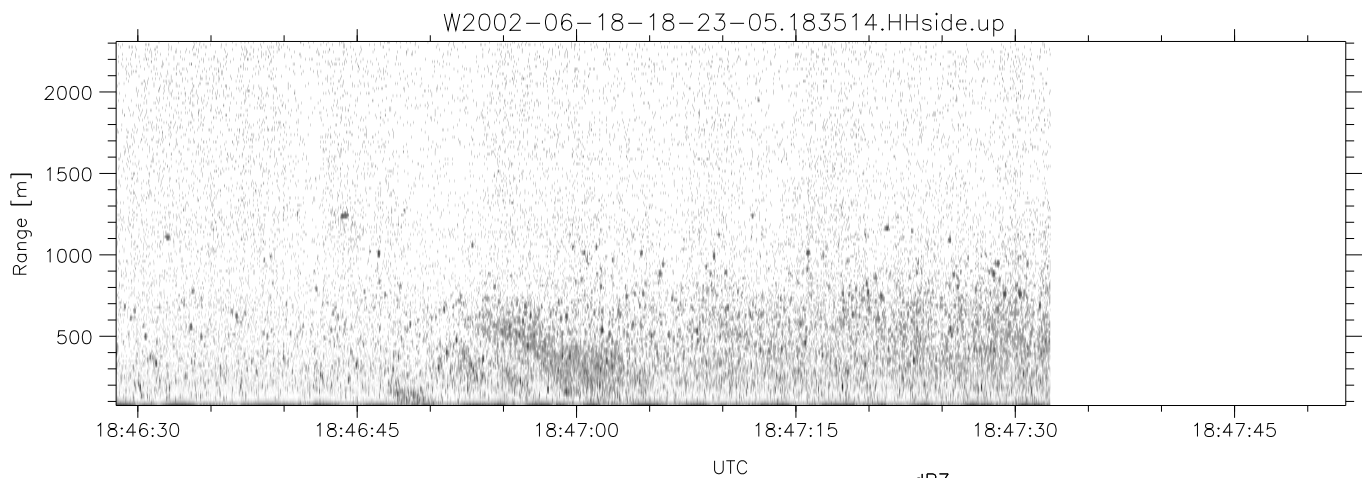
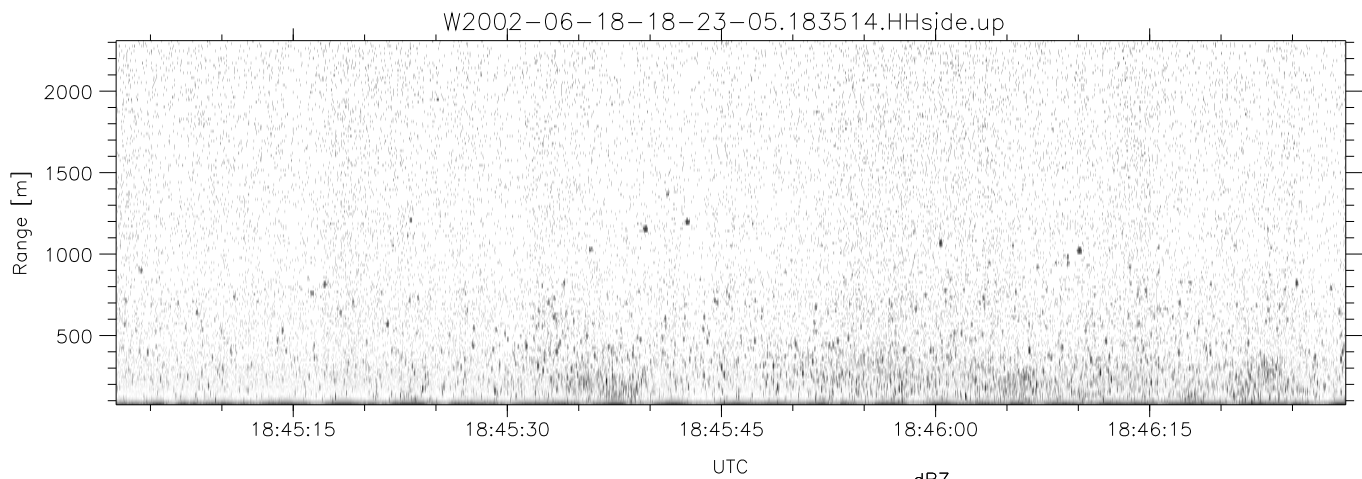
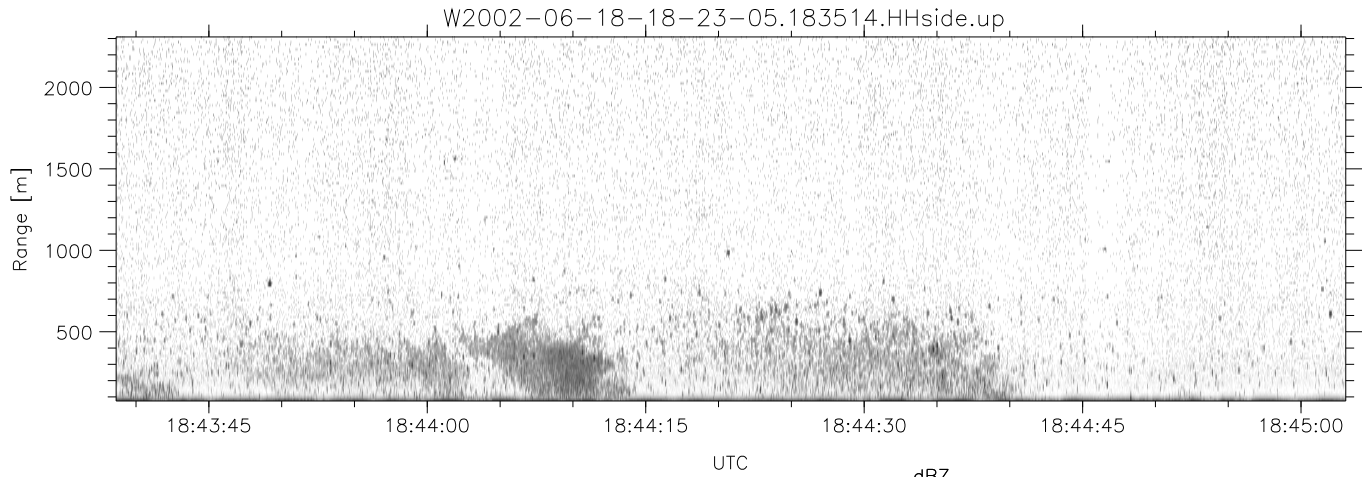
|           | Min    | Max    | Mean   | Std    | Varc% |
|-----------|--------|--------|--------|--------|-------|
| hhN(dB)   | -66.86 | -65.07 | -65.93 | -78.81 | 5.2   |
| vvN(dB)   | -65.74 | -63.86 | -64.74 | -77.56 | 5.2   |
| hhL(dB)   | -19.00 | -4.42  | -9.91  | -12.41 | 56.3  |
| vhL(dB)   | -22.78 | -5.55  | -11.41 | -12.82 | 72.3  |
| ppN(m/s)  | -15.80 | 15.80  | -0.01  | 9.09   |       |
| ppT(m/s)  | -0.09  | 0.04   | -0.01  | 0.01   |       |
| vh/hh(dB) | -NaN   | 3.69   | -10.92 | -5.29  | 365.  |
| hnjmp(dB) | -0.99  | 1.42   | 0.13   | -11.57 | 6.8   |
| vnjmp(dB) | -0.99  | 1.40   | 0.14   | -11.48 | 6.9   |



IHOP 2002 (dual-antenna config, modes 1,3,4,7) Data (cal: 49.0,50.0)

W2002-06-18-18-23-05 - SPPMAG  
 IRIG:1,UTC: 18:22:56.46 to 18:57:26.42, Dur: 2070s  
 TimeLngth: 2069.96s, TimeInt: 24ms (40.8pps)  
 TimeCor=-13.0s, DSPDif(mn,min,mx):23,20,506  
 PPS(min,max,std): 18,42,2.66  
 Prof: 315 to 84853, NumProf(t/r): 84538/30122  
 ProcTime/Recs: 18:35:14-18:47:32/30122-60243  
 MxACQtime: 17ms; DRate: 97.8KB/s; Flags: 0, 0, 0  
 Pulse: 275ns, IFfilt: 5.0MHz; ppPol: HH  
 TxPol: H, PRF: 20 kHz  
 Range: Delay 75m, Spacing 15m, Gates 150  
 Ave. Pulses: 348, Rng/Prof Aspect@90m/s: 6.8

|           | Min    | Max    | Mean   | Std    | Varc% |
|-----------|--------|--------|--------|--------|-------|
| hhN(dB)   | -66.86 | -65.07 | -65.93 | -78.81 | 5.2   |
| vvN(dB)   | -65.74 | -63.86 | -64.74 | -77.56 | 5.2   |
| hhL(dB)   | -19.00 | -4.42  | -9.91  | -12.41 | 56.3  |
| vhL(dB)   | -22.78 | -5.55  | -11.41 | -12.82 | 72.3  |
| ppN(m/s)  | -15.80 | 15.80  | -0.01  | 9.09   |       |
| ppT(m/s)  | -0.09  | 0.04   | -0.01  | 0.01   |       |
| vh/hh(dB) | -NaN   | 3.69   | -10.92 | -5.29  | 365.  |
| hnjmp(dB) | -0.99  | 1.42   | 0.13   | -11.57 | 6.8   |
| vnjmp(dB) | -0.99  | 1.40   | 0.14   | -11.48 | 6.9   |



IHOP 2002 (dual-antenna config, modes 1,3,4,7) Data (cal: 49.0,50.0)

W2002-06-18-18-23-05 - SPPMAG  
 IRIG:1,UTC: 18:22:56.46 to 18:57:26.42, Dur: 2070s  
 TimeLngth: 2069.96s, TimeInt: 24ms (40.8pps)  
 TimeCor=-13.0s, DSPDif(mn,min,mx):23,20,506  
 PPS(min,max,std): 18,42,2.66  
 Prof: 315 to 84853, NumProf(t/r): 84538/30122  
 ProcTime/Recs: 18:35:14-18:47:32/30122-60243  
 MxACQtime: 17ms; DRate: 97.8KB/s; Flags: 0, 0, 0  
 Pulse: 275ns, IFfilt: 5.0MHz; ppPol: HH  
 TxPol: H, PRF: 20 kHz  
 Range: Delay 75m, Spacing 15m, Gates 150  
 Ave. Pulses: 348, Rng/Prof Aspect@90m/s: 6.8

|            | Min    | Max    | Mean   | Std    | Varc% |
|------------|--------|--------|--------|--------|-------|
| hhN (dB)   | -66.86 | -65.07 | -65.93 | -78.81 | 5.2   |
| vvN (dB)   | -65.74 | -63.86 | -64.74 | -77.56 | 5.2   |
| hhL (dB)   | -19.00 | -4.42  | -9.91  | -12.41 | 56.3  |
| vhL (dB)   | -22.78 | -5.55  | -11.41 | -12.82 | 72.3  |
| ppN (m/s)  | -15.80 | 15.80  | -0.01  | 9.09   |       |
| ppT (m/s)  | -0.09  | 0.04   | -0.01  | 0.01   |       |
| vh/hh (dB) | -NaN   | 3.69   | -10.92 | -5.29  | 365.  |
| hnjmp (dB) | -0.99  | 1.42   | 0.13   | -11.57 | 6.8   |
| vnjmp (dB) | -0.99  | 1.40   | 0.14   | -11.48 | 6.9   |