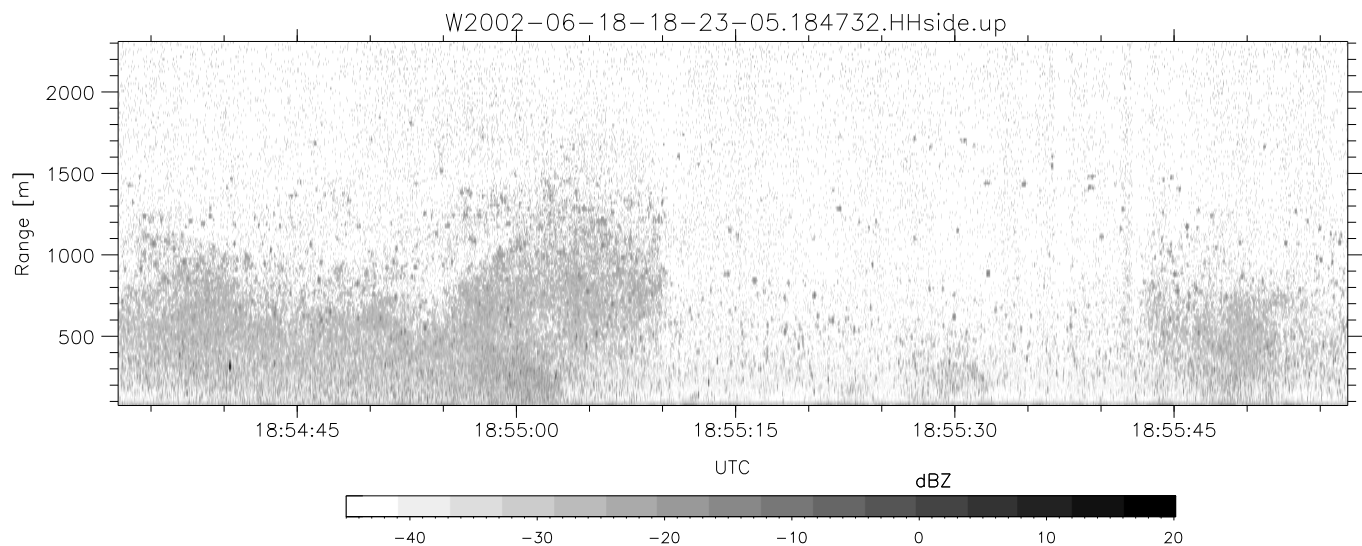
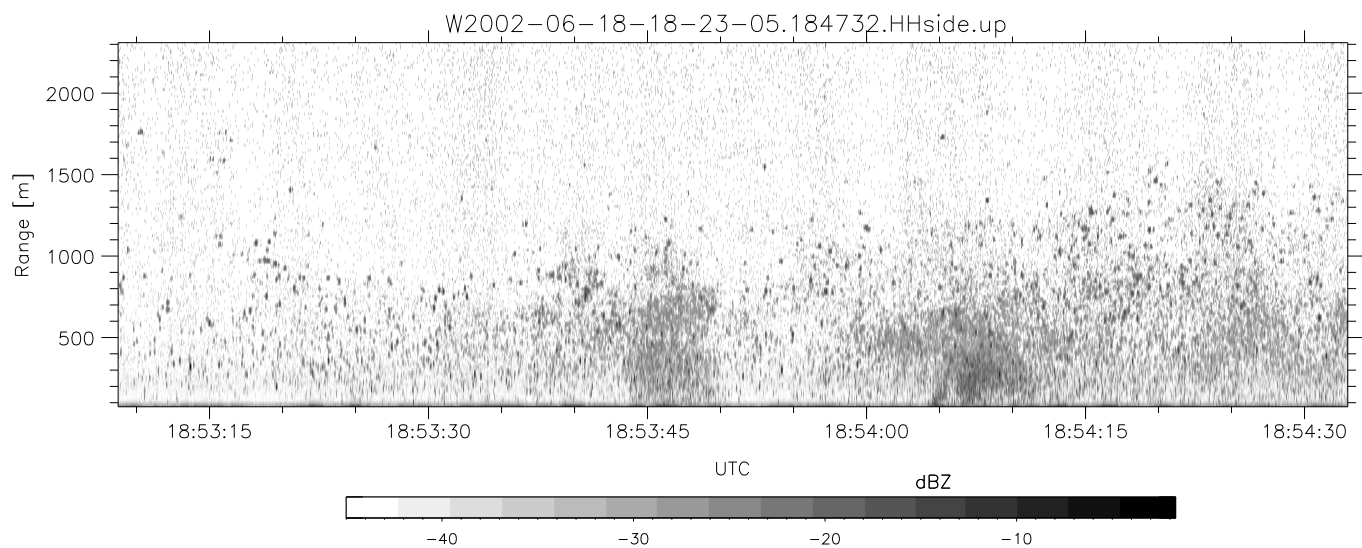
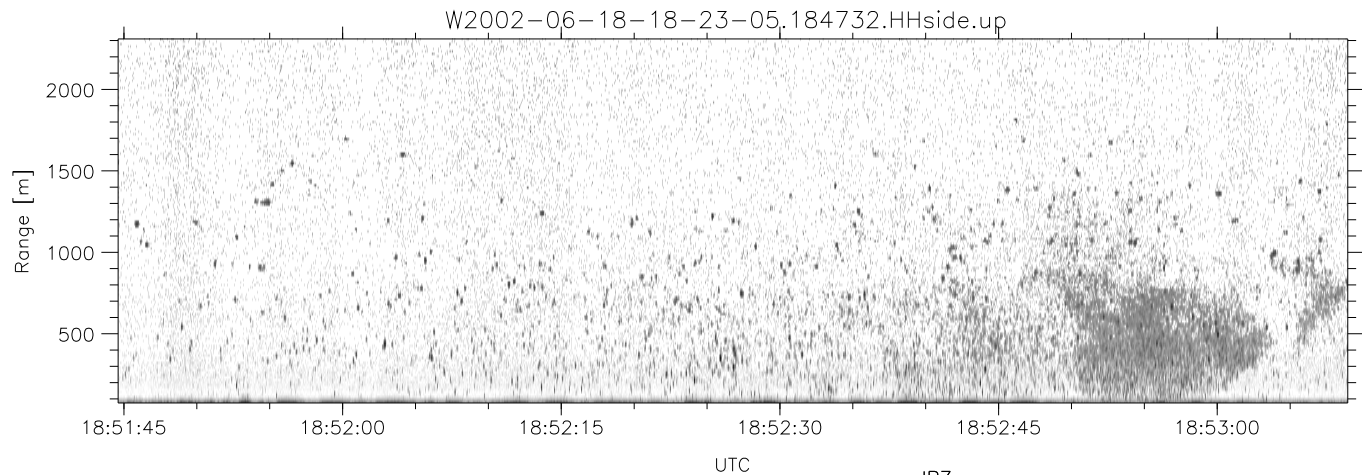


IHOP 2002 (dual-antenna config, modes 1,3,4,7) Data (cal: 49.0,50.0)

W2002-06-18-18-23-05 - SPPMAG
 IRIG:1,UTC: 18:22:56.46 to 18:57:26.42, Dur: 2070s
 TimeLngth: 2069.96s, TimeInt: 24ms (40.8pps)
 TimeCor=-13.0s, DSPDif(mn,min,mx):24,20,292
 PPS(min,max,std): 31,42,2.40
 Prof: 315 to 84853, NumProf(t/r): 84538/24294
 ProcTime/Recs: 18:47:32-18:57:26/60244-84537
 MxACQtime: 17ms; DRate: 97.8KB/s; Flags: 0, 0, 0
 Pulse: 275ns, IFfilt: 5.0MHz; ppPol: HH
 TxPol: H, PRF: 20 kHz
 Range: Delay 75m, Spacing 15m, Gates 150
 Ave. Pulses: 348, Rng/Prof Aspect@90m/s: 6.8

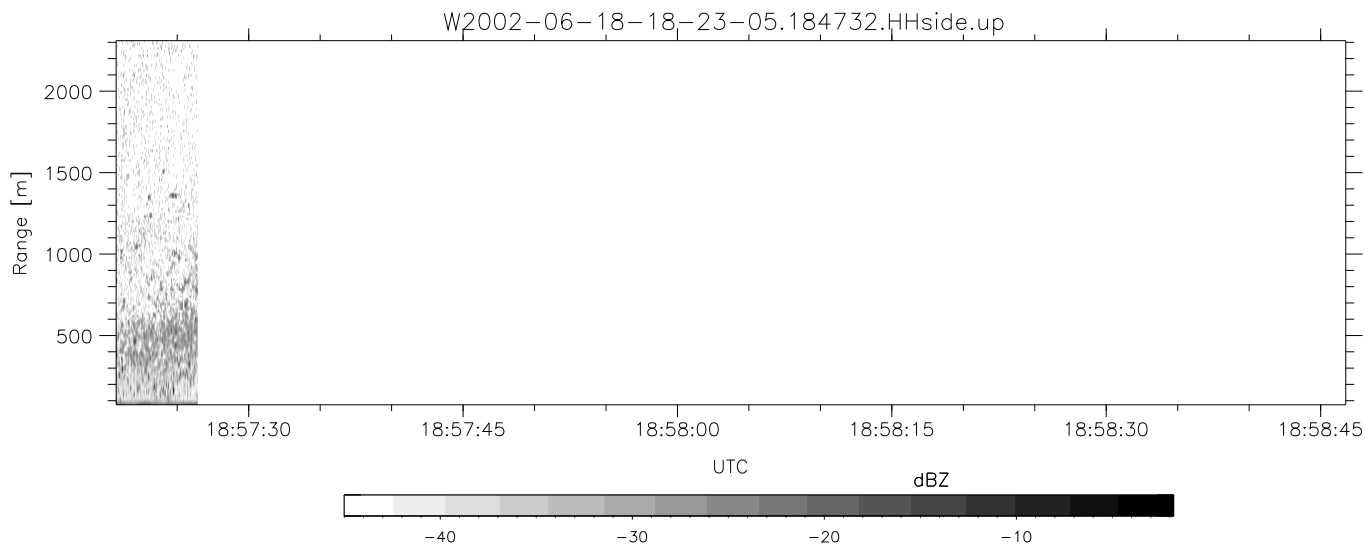
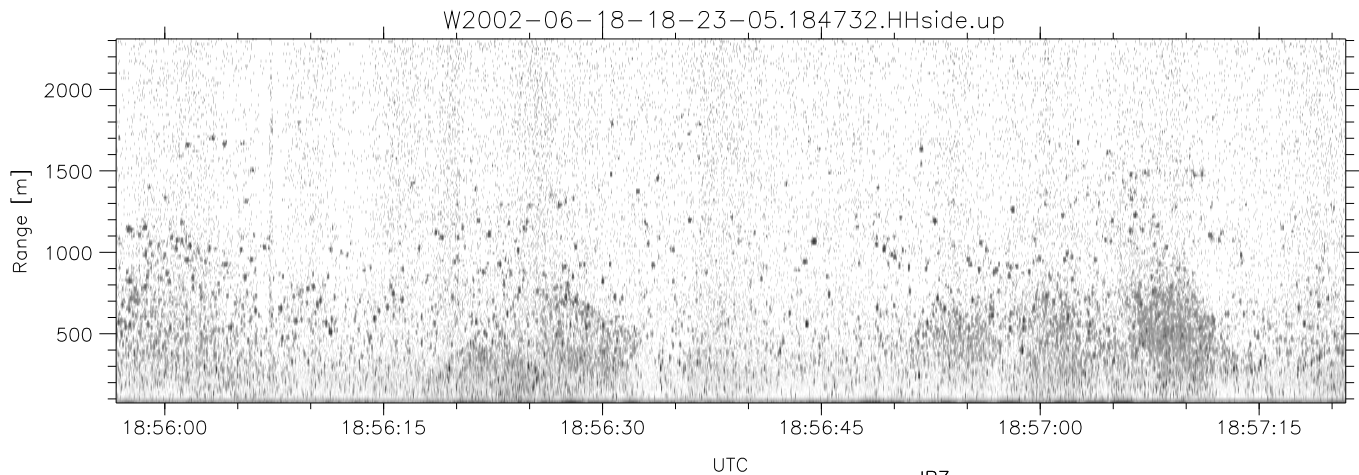
	Min	Max	Mean	Std	Varc%
hhN(dB)	-67.23	-65.32	-66.12	-79.01	5.1
vvN(dB)	-65.86	-63.84	-64.92	-77.60	5.4
hhL(dB)	-20.57	-4.20	-11.10	-12.23	77.1
vhL(dB)	-24.83	-5.95	-12.00	-13.81	66.0
ppN(m/s)	-15.80	15.80	0.02	9.07	
ppT(m/s)	-0.08	0.05	-0.01	0.01	
vh/hh(dB)	-NaN	1.48	-10.39	-6.30	256.
hnjmp(dB)	-0.94	1.23	0.13	-11.54	6.8
vnjmp(dB)	-0.90	1.24	0.14	-11.45	6.9



IHOP 2002 (dual-antenna config, modes 1,3,4,7) Data (cal: 49.0,50.0)

W2002-06-18-18-23-05 - SPPMAG
 IRIG:1,UTC: 18:22:56.46 to 18:57:26.42, Dur: 2070s
 TimeLngth: 2069.96s, TimeInt: 24ms (40.8pps)
 TimeCor=-13.0s, DSPDif(mn,min,mx):24,20,292
 PPS(min,max,std): 31,42,2.40
 Prof: 315 to 84853, NumProf(t/r): 84538/24294
 ProcTime/Recs: 18:47:32-18:57:26/60244-84537
 MxACQtime: 17ms; DRate: 97.8KB/s; Flags: 0, 0, 0
 Pulse: 275ns, IFfilt: 5.0MHz; ppPol: HH
 TxPol: H, PRF: 20 kHz
 Range: Delay 75m, Spacing 15m, Gates 150
 Ave. Pulses: 348, Rng/Prof Aspect@90m/s: 6.8

	Min	Max	Mean	Std	Varc%
hhN(dB)	-67.23	-65.32	-66.12	-79.01	5.1
vvN(dB)	-65.86	-63.84	-64.92	-77.60	5.4
hhL(dB)	-20.57	-4.20	-11.10	-12.23	77.1
vhL(dB)	-24.83	-5.95	-12.00	-13.81	66.0
ppN(m/s)	-15.80	15.80	0.02	9.07	
ppT(m/s)	-0.08	0.05	-0.01	0.01	
vh/hh(dB)	-NaN	1.48	-10.39	-6.30	256.
hnjmp(dB)	-0.94	1.23	0.13	-11.54	6.8
vnjmp(dB)	-0.90	1.24	0.14	-11.45	6.9



IHOP 2002 (dual-antenna config, modes 1,3,4,7) Data (cal: 49.0,50.0)

W2002-06-18-18-23-05 - SPPMAG
 IRIG:1,UTC: 18:22:56.46 to 18:57:26.42, Dur: 2070s
 TimeLngth: 2069.96s, TimeInt: 24ms (40.8pps)
 TimeCor=-13.0s, DSPDif(mn,min,mx):24,20,292
 PPS(min,max,std): 31,42,2.40
 Prof: 315 to 84853, NumProf(t/r): 84538/24294
 ProcTime/Recs: 18:47:32-18:57:26/60244-84537
 MxACQtime: 17ms; DRate: 97.8KB/s; Flags: 0, 0, 0
 Pulse: 275ns, IFfilt: 5.0MHz; ppPol: HH
 TxPol: H, PRF: 20 kHz
 Range: Delay 75m, Spacing 15m, Gates 150
 Ave. Pulses: 348, Rng/Prof Aspect@90m/s: 6.8

	Min	Max	Mean	Std	Varc%
hhN(dB)	-67.23	-65.32	-66.12	-79.01	5.1
vvN(dB)	-65.86	-63.84	-64.92	-77.60	5.4
hhL(dB)	-20.57	-4.20	-11.10	-12.23	77.1
vhL(dB)	-24.83	-5.95	-12.00	-13.81	66.0
ppN(m/s)	-15.80	15.80	0.02	9.07	
ppT(m/s)	-0.08	0.05	-0.01	0.01	
vh/hh(dB)	-NaN	1.48	-10.39	-6.30	256.
hnjmp(dB)	-0.94	1.23	0.13	-11.54	6.8
vnjmp(dB)	-0.90	1.24	0.14	-11.45	6.9