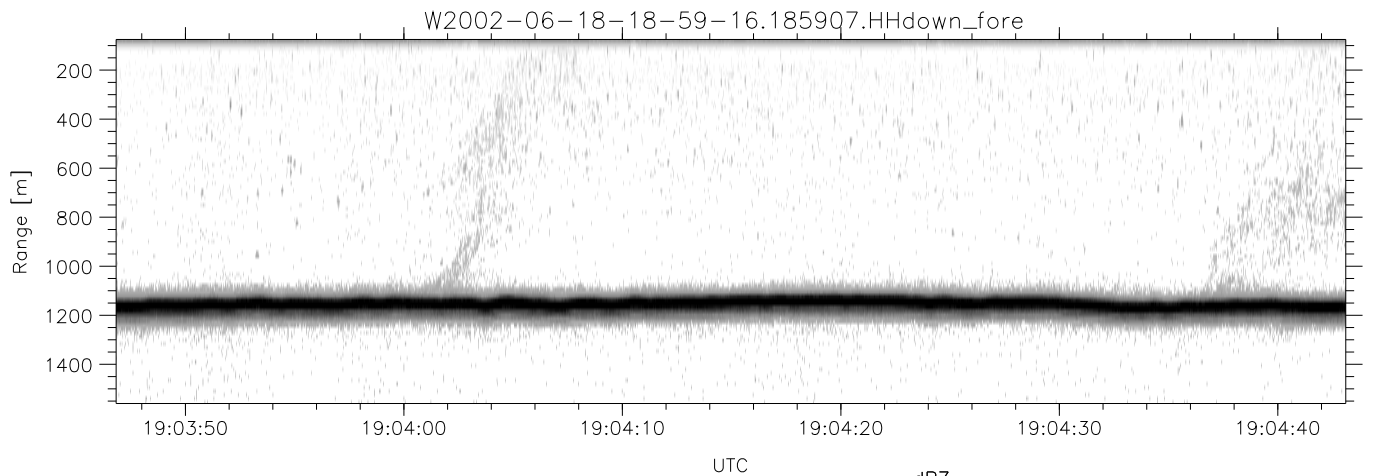
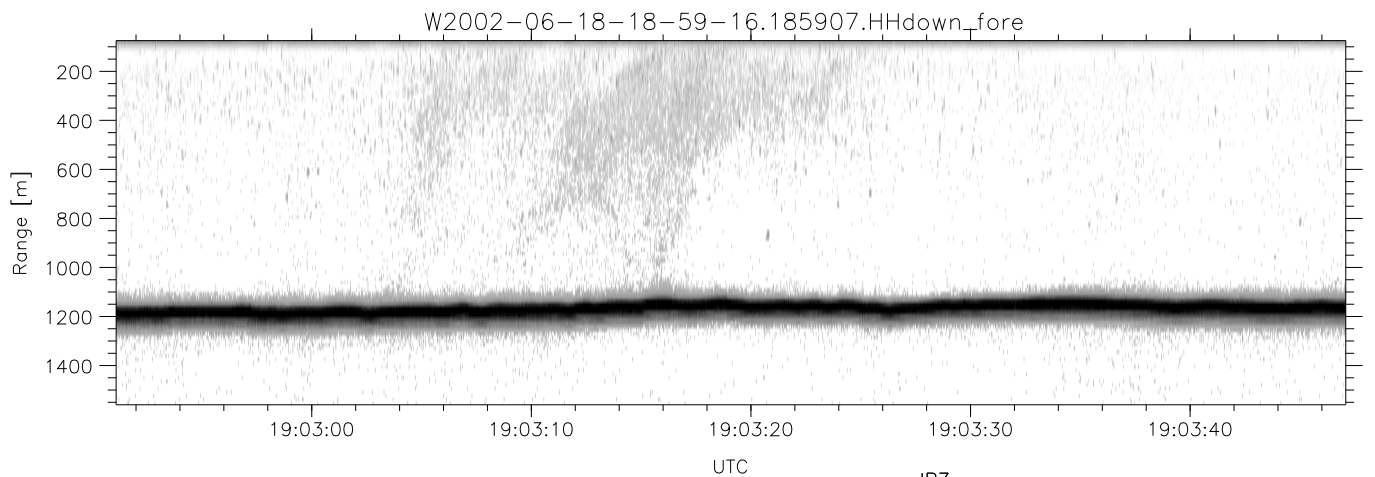
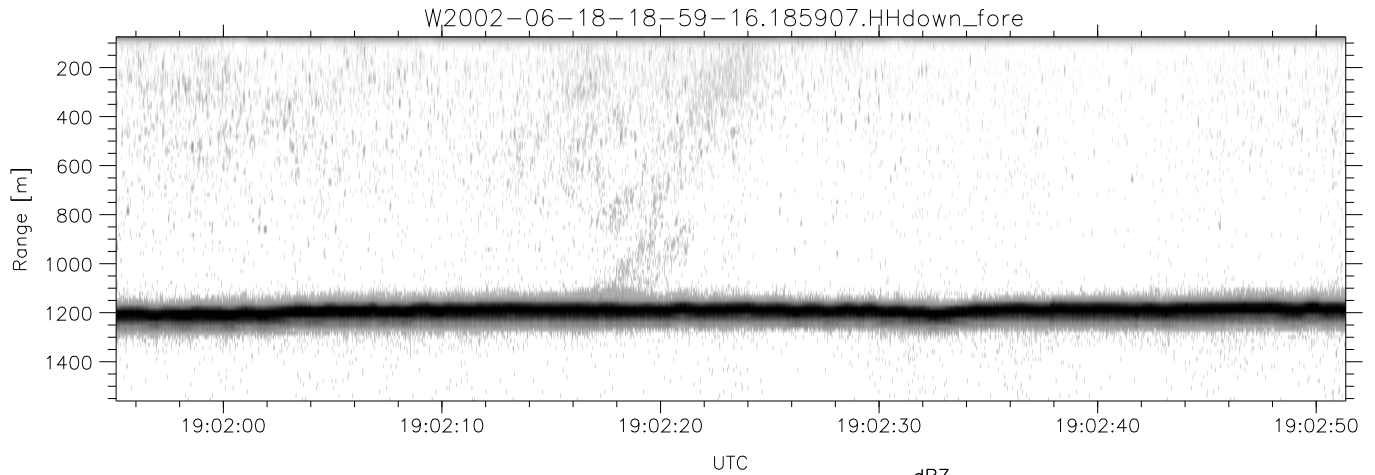


IHOP 2002 (dual-antenna config, modes 1,3,4,7) Data (cal: 55.0,50.0)

W2002-06-18-18-59-16 - PPMAG4
 IRIG:1,UTC: 18:59:07.10 to 19:33:42.18, Dur: 2075s
 TimeLngth: 2075.08s, TimeInt: 29ms (34.0pps)
 TimeCor=-13.0s, DSPDif(mn,min,mx):29,28,605
 PPS(min,max,std): 20,36,2.33
 Prof: 779 to 71428, NumProf(t/r): 70649/17069
 ProcTime/Recs: 18:59:07-19:07:27/0-17068
 MxACQtime: 33ms; DRate: 190.6KB/s; Flags: 0, 0, 0
 Pulse: 275ns, IFfilt: 5.0MHz; ppPol: HH HV VV
 TxPol: HHVV, PRF: 20 10 20 10 kHz
 Range: Delay 75m, Spacing 15m, Gates 100
 Ave. Pulses: 84, Rng/Prof Aspect@90m/s: 5.7

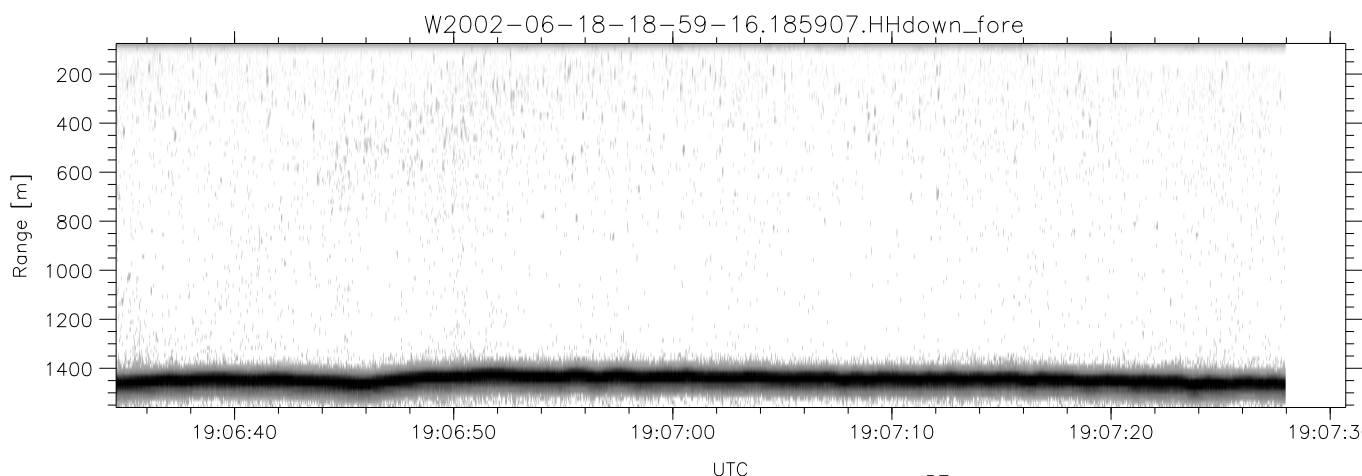
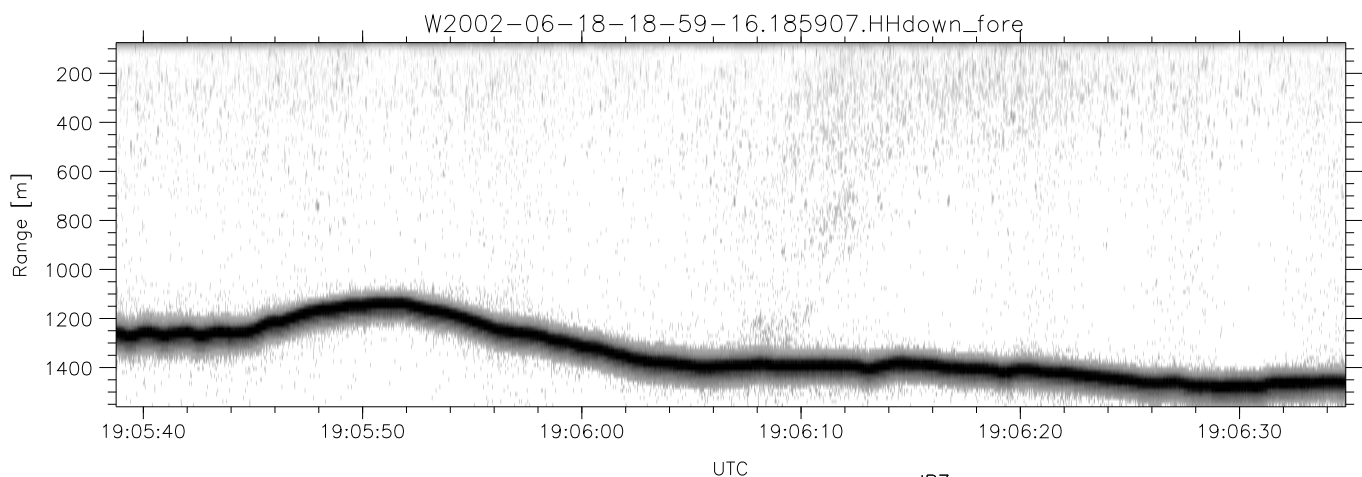
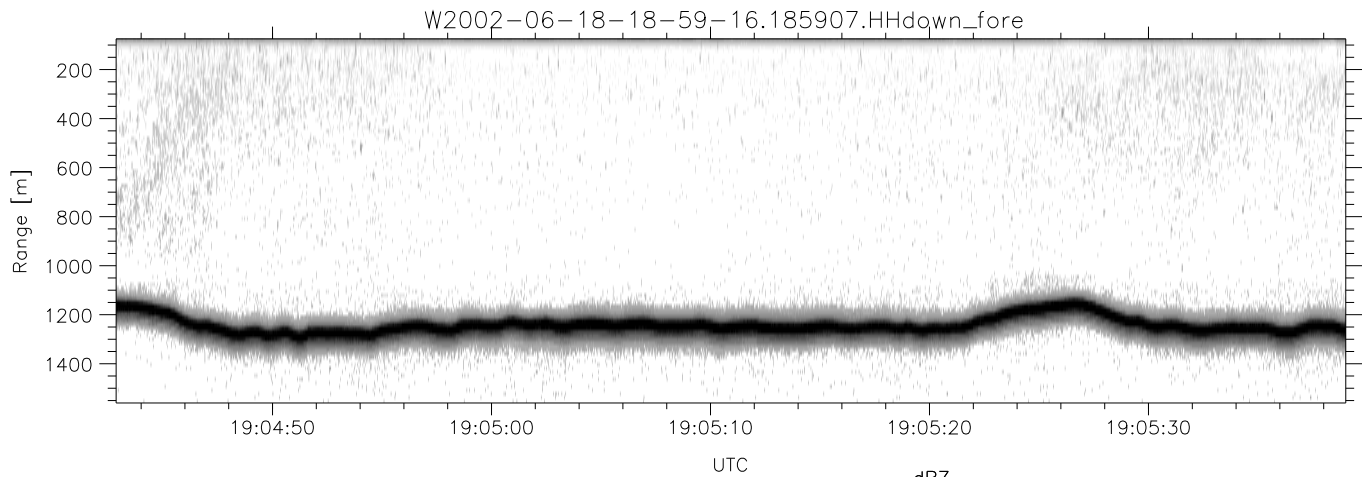
	Min	Max	Mean	Std	Varc%
hhN(dB)	-67.88	-64.58	-66.09	-76.12	9.9
vvN(dB)	-67.00	-63.50	-65.12	-75.11	10.0
hhL(dB)	-10.92	-2.31	-4.45	-10.16	26.9
vvL(dB)	-8.66	-0.42	-2.31	-9.48	19.2
ppN(m/s)	-12.75	12.45	-0.00	4.19	
ppT(m/s)	-100.7	98.38	-0.03	33.09	
hh/vv(dB)	-NaN	105.25	55.26	80.16	3088
vh/hh(dB)	-NaN	-28.36	-49.25	-40.76	705.
hv/vv(dB)	-NaN	-32.03	-49.28	-45.23	254.
hnjmp(dB)	-2.04	2.43	0.17	-8.41	13.9
vnjmp(dB)	-2.34	2.36	0.18	-8.37	14.0



IHOP 2002 (dual-antenna config, modes 1,3,4,7) Data (cal: 55.0,50.0)

W2002-06-18-18-59-16 - PPMAG4
 IRIG:1,UTC: 18:59:07.10 to 19:33:42.18, Dur: 2075s
 TimeLngth: 2075.08s, TimeInt: 29ms (34.0pps)
 TimeCor=-13.0s, DSPDif(mn,min,mx):29,28,605
 PPS(min,max,std): 20,36,2.33
 Prof: 779 to 71428, NumProf(t/r): 70649/17069
 ProcTime/Recs: 18:59:07-19:07:27/0-17068
 MxAcQtime: 33ms; DRate: 190.6KB/s; Flags: 0, 0, 0
 Pulse: 275ns, IFfilt: 5.0MHz; ppPol: HH HV VV
 TxPol: HHVV, PRF: 20 10 20 10 kHz
 Range: Delay 75m, Spacing 15m, Gates 100
 Ave. Pulses: 84, Rng/Prof Aspect@90m/s: 5.7

	Min	Max	Mean	Std	Varc%
hhN(dB)	-67.88	-64.58	-66.09	-76.12	9.9
vvN(dB)	-67.00	-63.50	-65.12	-75.11	10.0
hhL(dB)	-10.92	-2.31	-4.45	-10.16	26.9
vvL(dB)	-8.66	-0.42	-2.31	-9.48	19.2
ppN(m/s)	-12.75	12.45	-0.00	4.19	
ppT(m/s)	-100.7	98.38	-0.03	33.09	
hh/vv(dB)	-NaN	105.25	55.26	80.16	3088
vh/hh(dB)	-NaN	-28.36	-49.25	-40.76	705.
hv/vv(dB)	-NaN	-32.03	-49.28	-45.23	254.
hnjmp(dB)	-2.04	2.43	0.17	-8.41	13.9
vnjmp(dB)	-2.34	2.36	0.18	-8.37	14.0



IHOP 2002 (dual-antenna config, modes 1,3,4,7) Data (cal: 55.0,50.0)

W2002-06-18-18-59-16 - PPMAG4
 IRIG:1,UTC: 18:59:07.10 to 19:33:42.18, Dur: 2075s
 TimeLngth: 2075.08s, TimeInt: 29ms (34.0pps)
 TimeCor=-13.0s, DSPDif(mn,min,mx):29,28,605
 PPS(min,max,std): 20,36,2.33
 Prof: 779 to 71428, NumProf(t/r): 70649/17069
 ProcTime/Recs: 18:59:07-19:07:27/0-17068
 MxACQtime: 33ms; DRate: 190.6KB/s; Flags: 0, 0, 0
 Pulse: 275ns, IFilt: 5.0MHz; ppPol: HH HV VV
 TxPol: HHVV, PRF: 20 10 20 10 kHz
 Range: Delay 75m, Spacing 15m, Gates 100
 Ave. Pulses: 84, Rng/Prof Aspect@90m/s: 5.7

	Min	Max	Mean	Std	Varc%
hhN(dB)	-67.88	-64.58	-66.09	-76.12	9.9
vvN(dB)	-67.00	-63.50	-65.12	-75.11	10.0
hhL(dB)	-10.92	-2.31	-4.45	-10.16	26.9
vvL(dB)	-8.66	-0.42	-2.31	-9.48	19.2
ppN(m/s)	-12.75	12.45	-0.00	4.19	
ppT(m/s)	-100.7	98.38	-0.03	33.09	
hh/vv(dB)	-NaN	105.25	55.26	80.16	3088
vh/hh(dB)	-NaN	-28.36	-49.25	-40.76	705.5
hv/vv(dB)	-NaN	-32.03	-49.28	-45.23	254.4
hnjmp(dB)	-2.04	2.43	0.17	-8.41	13.9
vnjmp(dB)	-2.34	2.36	0.18	-8.37	14.0