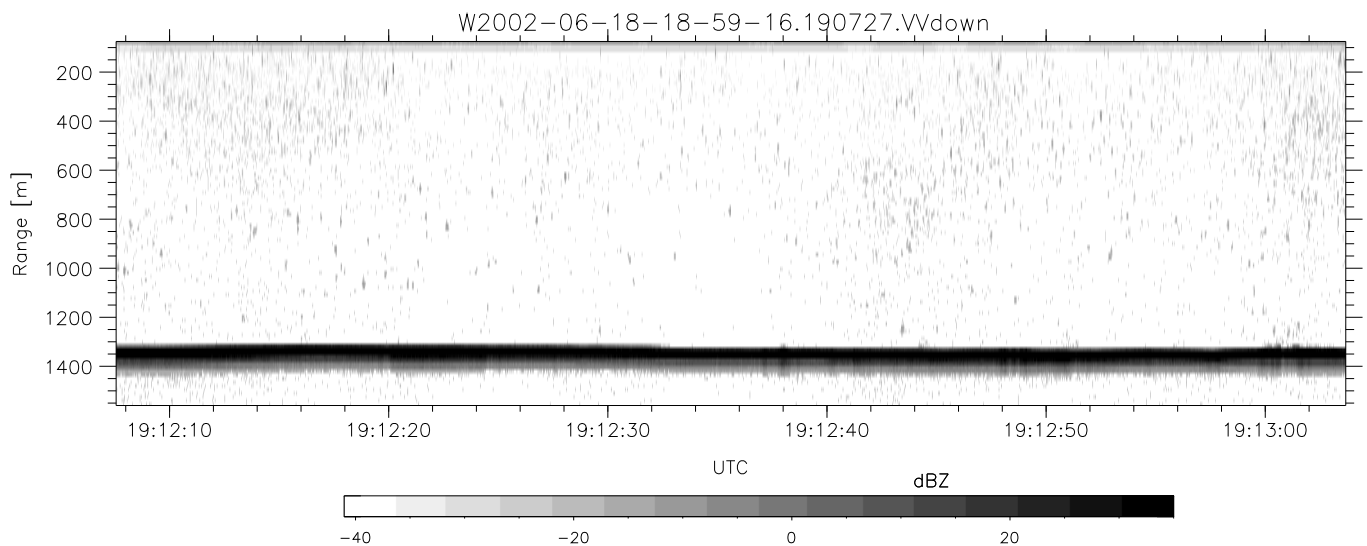
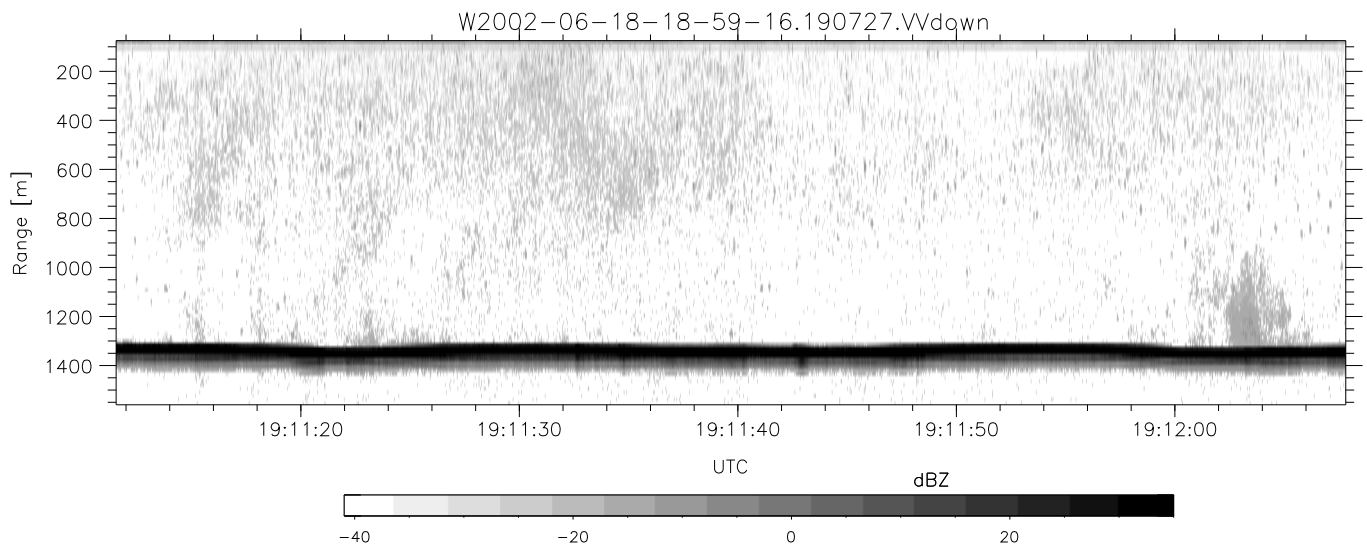
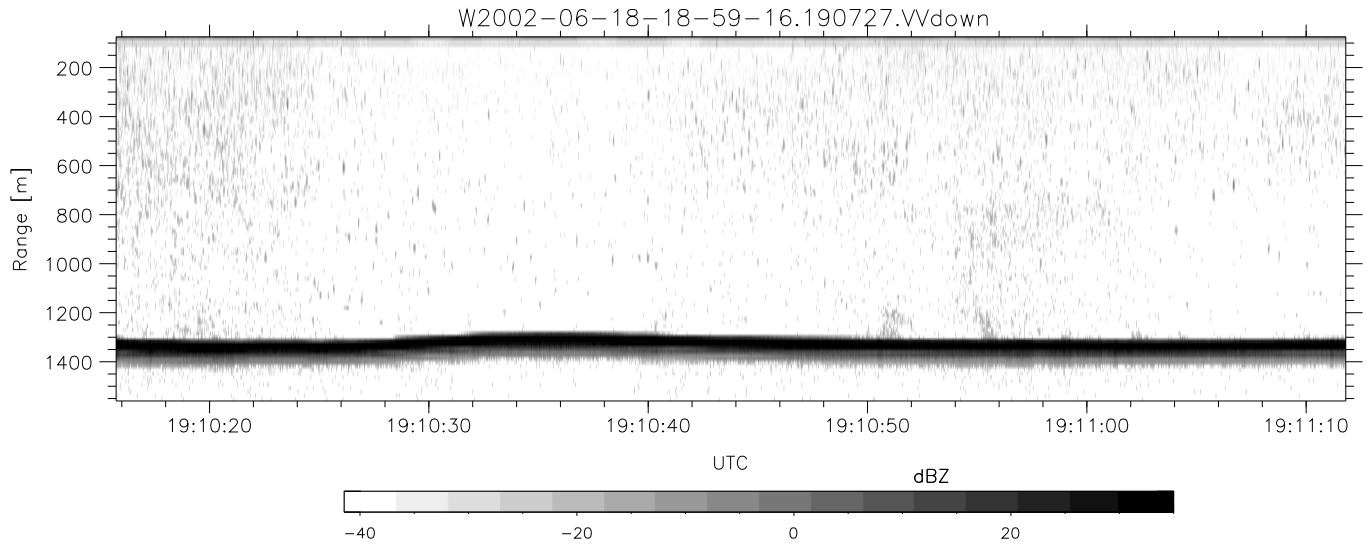


IHOP 2002 (dual-antenna config, modes 1,3,4,7) Data (cal: 55.0,50.0)

W2002-06-18-18-59-16 - PPMAG4
 IRIG:1,UTC: 18:59:07.10 to 19:33:42.18, Dur: 2075s
 TimeLngth: 2075.08s, TimeInt: 29ms (34.0pps)
 TimeCor=-13.0s, DSPDif(mn,min,mx):29,28,375
 PPS(min,max,std): 23,36,2.38
 Prof: 779 to 71428, NumProf(t/r): 70649/17069
 ProcTime/Recs: 19:07:27-19:15:48/17069-34137
 MxACQtime: 33ms; DRate: 190.6KB/s; Flags: 0, 0, 0
 Pulse: 275ns, IFfilt: 5.0MHz; ppPol: HH HV VV
 TxPol: HHVV, PRF: 20 10 20 10 kHz
 Range: Delay 75m, Spacing 15m, Gates 100
 Ave. Pulses: 84, Rng/Prof Aspect@90m/s: 5.7

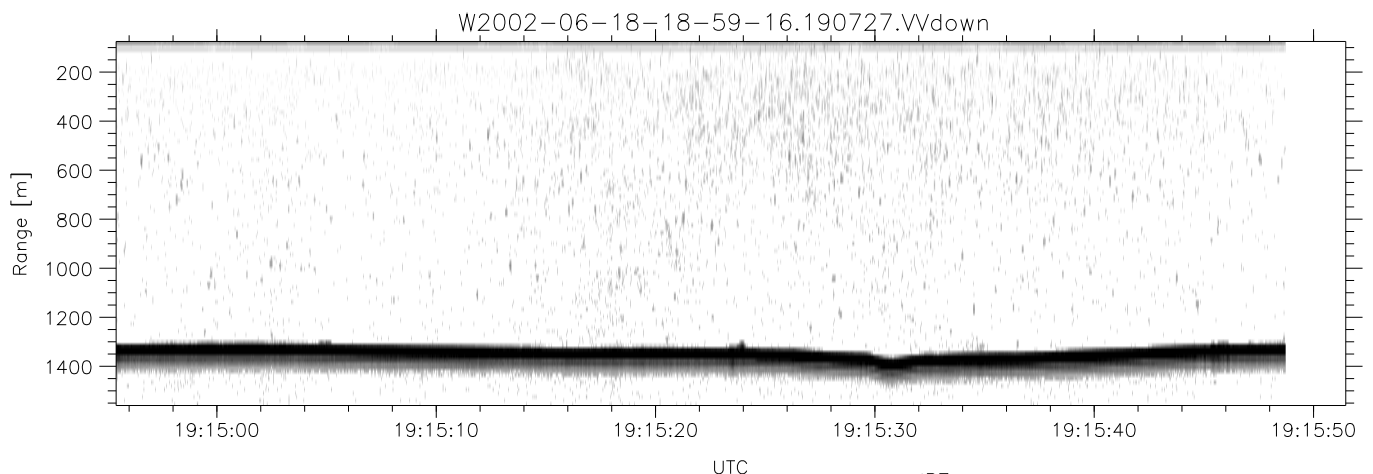
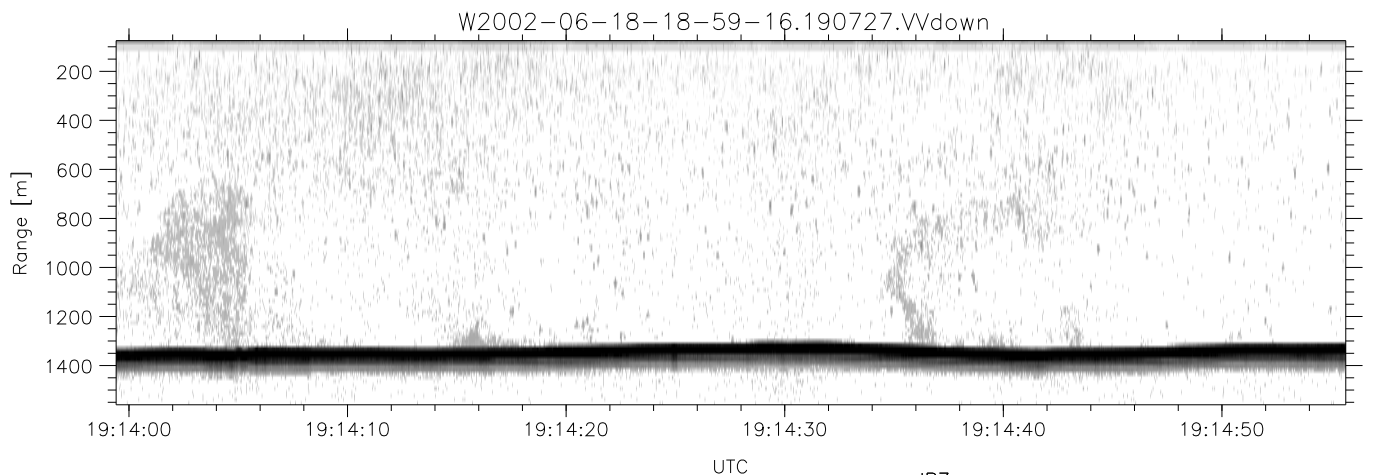
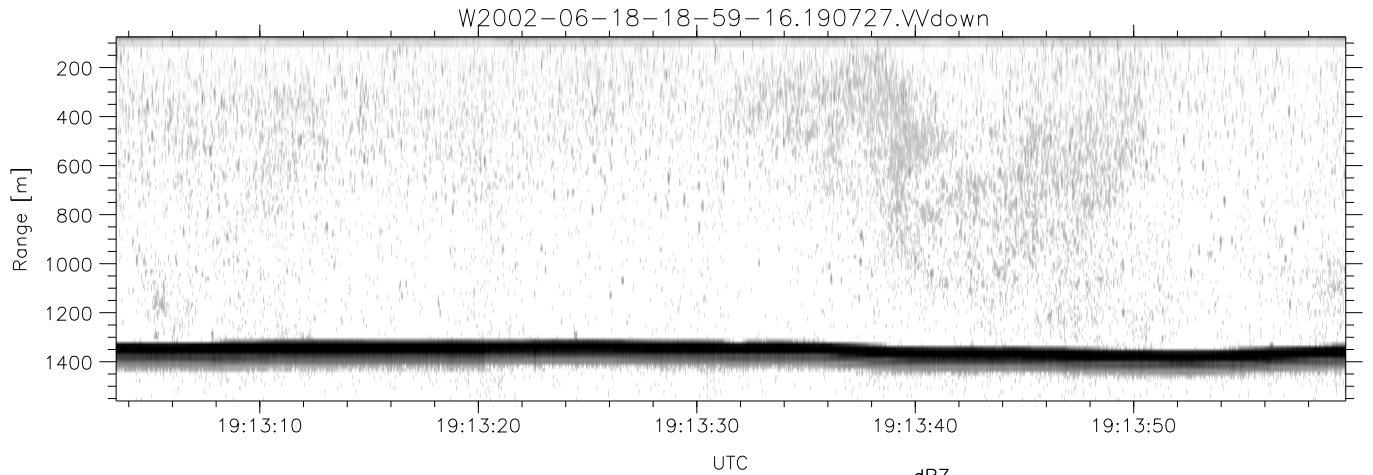
	Min	Max	Mean	Std	Varc%
hhN(dB)	-68.00	-64.34	-66.19	-76.19	10.0
vvN(dB)	-67.33	-63.38	-65.23	-75.12	10.3
hhL(dB)	-15.36	-3.43	-6.82	-12.07	29.9
vvL(dB)	-10.32	0.13	-1.68	-7.45	26.5
ppN(m/s)	-12.71	12.45	-0.01	4.14	
ppT(m/s)	-100.4	98.35	-0.05	32.67	
hh/vv(dB)	-NaN	104.12	48.05	80.42	1727
vh/hh(dB)	-NaN	-27.35	-49.26	-41.01	668.
hv/vv(dB)	-NaN	-34.79	-50.93	-46.24	294.
hnjmp(dB)	-2.33	1.97	-0.07	-8.62	14.0
vnjmp(dB)	-2.51	2.13	-0.09	-8.60	14.1



IHOP 2002 (dual-antenna config, modes 1,3,4,7) Data (cal: 55.0,50.0)

W2002-06-18-18-59-16 - PPMAG4
 IRIG:1,UTC: 18:59:07.10 to 19:33:42.18, Dur: 2075s
 TimeLngth: 2075.08s, TimeInt: 29ms (34.0pps)
 TimeCor=-13.0s, DSPDif(mn,min,mx):29,28,375
 PPS(min,max,std): 23,36,2.38
 Prof: 779 to 71428, NumProf(t/r): 70649/17069
 ProcTime/Recs: 19:07:27-19:15:48/17069-34137
 MxACQtime: 33ms; DRate: 190.6KB/s; Flags: 0, 0, 0
 Pulse: 275ns, IFfilt: 5.0MHz; ppPol: HH HV VV
 TxPol: HHVV, PRF: 20 10 20 10 kHz
 Range: Delay 75m, Spacing 15m, Gates 100
 Ave. Pulses: 84, Rng/Prof Aspect@90m/s: 5.7

	Min	Max	Mean	Std	Varc%
hhN(dB)	-68.00	-64.34	-66.19	-76.19	10.0
vvN(dB)	-67.33	-63.38	-65.23	-75.12	10.3
hhL(dB)	-15.36	-3.43	-6.82	-12.07	29.9
vvL(dB)	-10.32	0.13	-1.68	-7.45	26.5
ppN(m/s)	-12.71	12.45	-0.01	4.14	
ppT(m/s)	-100.4	98.35	-0.05	32.67	
hh/vv(dB)	-NaN	104.12	48.05	80.42	1727
vh/hh(dB)	-NaN	-27.35	-49.26	-41.01	668.
hv/vv(dB)	-NaN	-34.79	-50.93	-46.24	294.
hnjmp(dB)	-2.33	1.97	-0.07	-8.62	14.0
vnjmp(dB)	-2.51	2.13	-0.09	-8.60	14.1



IHOP 2002 (dual-antenna config, modes 1,3,4,7) Data (cal: 55.0,50.0)

W2002-06-18-18-59-16 - PPMAG4
 IRIG:1,UTC: 18:59:07.10 to 19:33:42.18, Dur: 2075s
 TimeLngth: 2075.08s, TimeInt: 29ms (34.0pps)
 TimeCor=-13.0s, DSPDif(mn,min,mx):29,28,375
 PPS(min,max,std): 23,36,2.38
 Prof: 779 to 71428, NumProf(t/r): 70649/17069
 ProcTime/Recs: 19:07:27-19:15:48/17069-34137
 MxACQtime: 33ms; DRate: 190.6KB/s; Flags: 0, 0, 0
 Pulse: 275ns, IFfilt: 5.0MHz; ppPol: HH HV VV
 TxPol: HHVV, PRF: 20 10 20 10 kHz
 Range: Delay 75m, Spacing 15m, Gates 100
 Ave. Pulses: 84, Rng/Prof Aspect@90m/s: 5.7

	Min	Max	Mean	Std	Varc%
hhN(dB)	-68.00	-64.34	-66.19	-76.19	10.0
vvN(dB)	-67.33	-63.38	-65.23	-75.12	10.3
hhL(dB)	-15.36	-3.43	-6.82	-12.07	29.9
vvL(dB)	-10.32	0.13	-1.68	-7.45	26.5
ppN(m/s)	-12.71	12.45	-0.01	4.14	
ppT(m/s)	-100.4	98.35	-0.05	32.67	
hh/vv(dB)	-NaN	104.12	48.05	80.42	1727
vh/hh(dB)	-NaN	-27.35	-49.26	-41.01	668.
hv/vv(dB)	-NaN	-34.79	-50.93	-46.24	294.
hnjmp(dB)	-2.33	1.97	-0.07	-8.62	14.0
vnjmp(dB)	-2.51	2.13	-0.09	-8.60	14.1