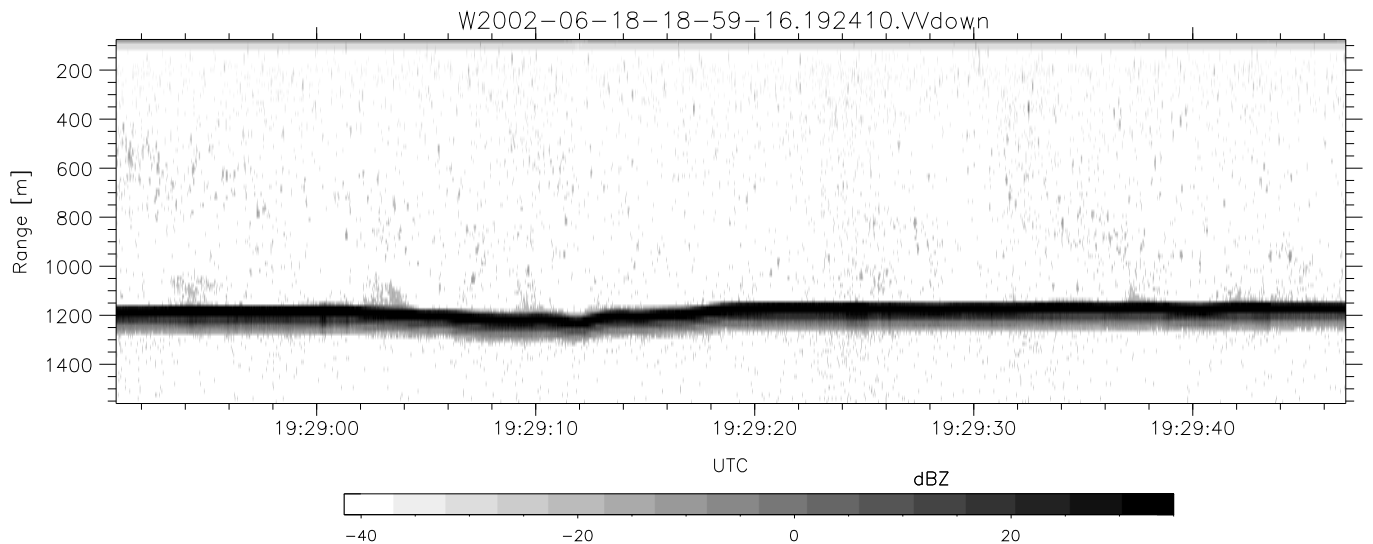
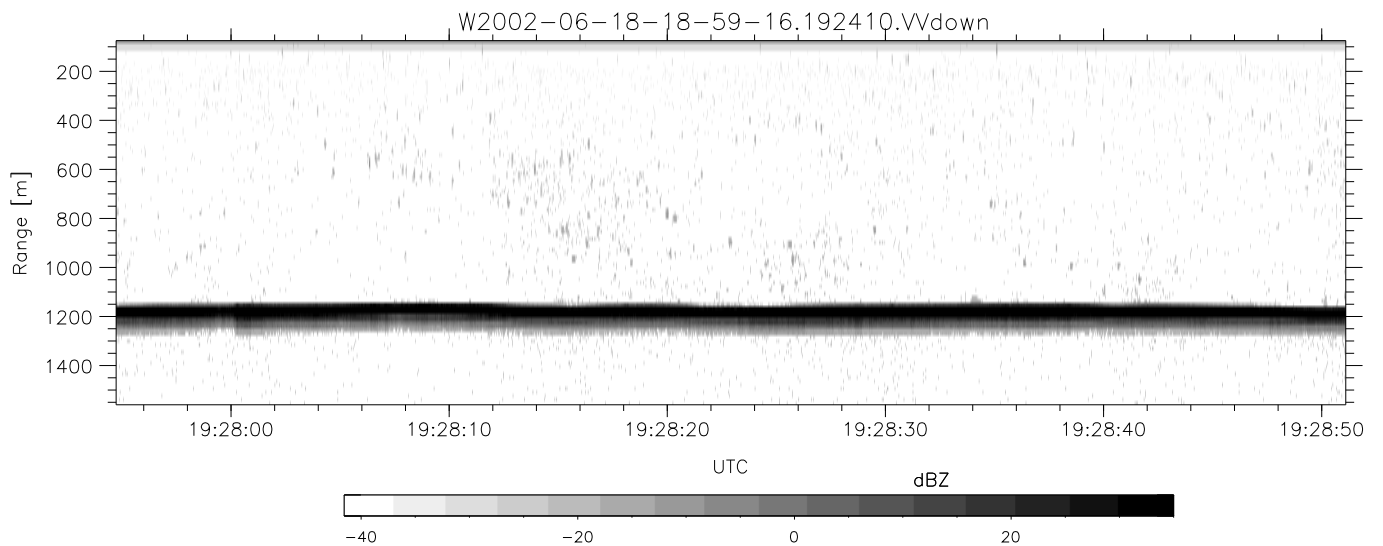
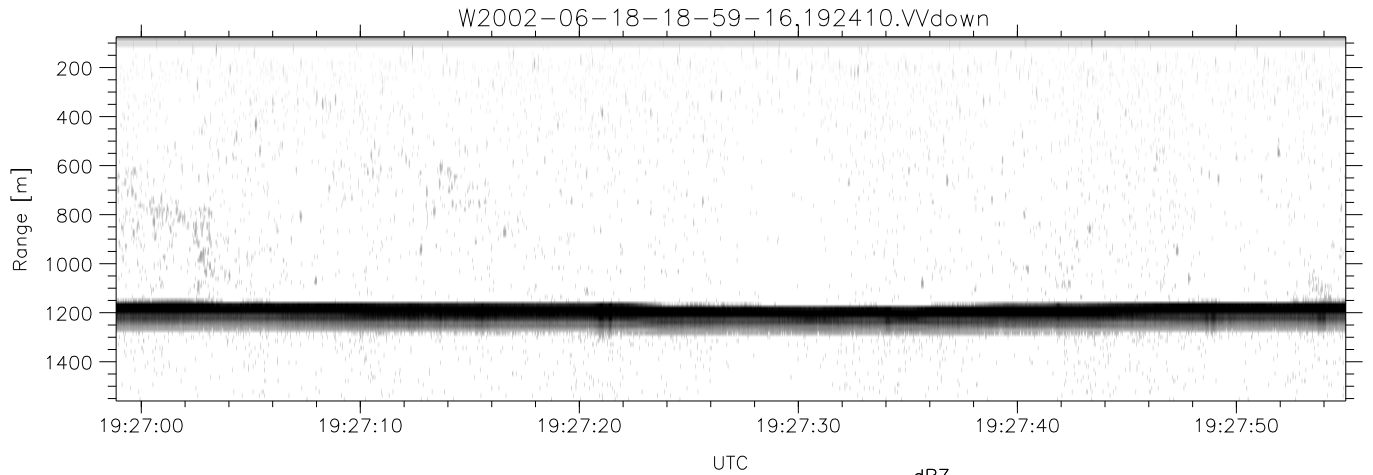


IHOP 2002 (dual-antenna config, modes 1,3,4,7) Data (cal: 55.0,50.0)

W2002-06-18-18-59-16 - PPMAG4  
 IRIG:1,UTC: 18:59:07.10 to 19:33:42.18, Dur: 2075s  
 TimeLngth: 2075.08s, TimeInt: 29ms (34.0pps)  
 TimeCor=-13.0s, DSPDif(mn,min,mx):29,28,389  
 PPS(min,max,std): 22,36,2.41  
 Prof: 779 to 71428, NumProf(t/r): 70649/17069  
 ProcTime/Recs: 19:24:10-19:32:32/51207-68275  
 MxACQtime: 33ms; DRate: 190.6KB/s; Flags: 0, 0, 0  
 Pulse: 275ns, IFfilt: 5.0MHz; ppPol: HH HV VV  
 TxPol: HHVV, PRF: 20 10 20 10 kHz  
 Range: Delay 75m, Spacing 15m, Gates 100  
 Ave. Pulses: 84, Rng/Prof Aspect@90m/s: 5.7

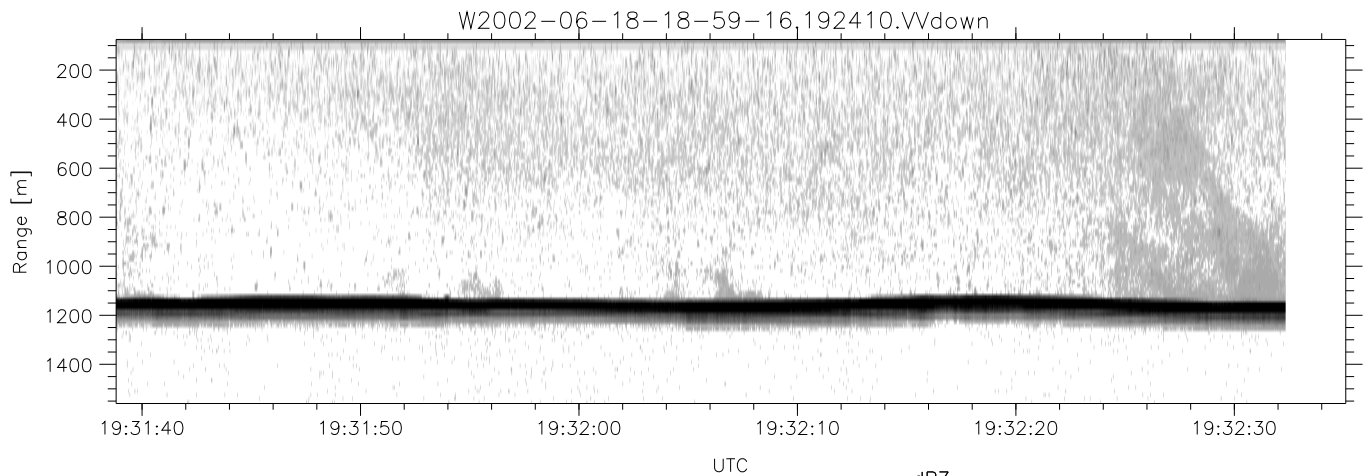
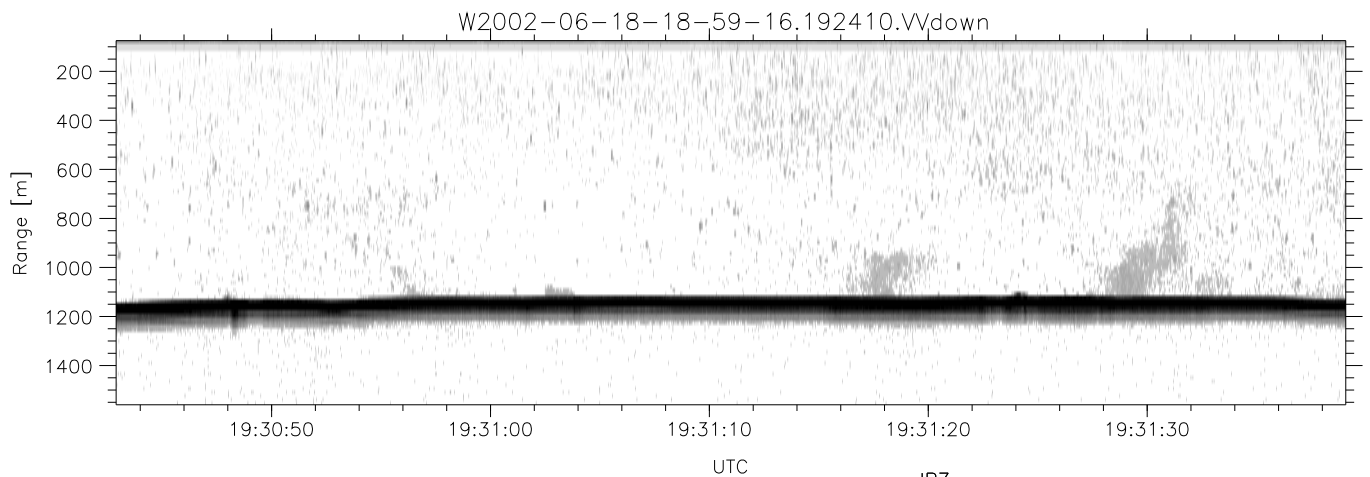
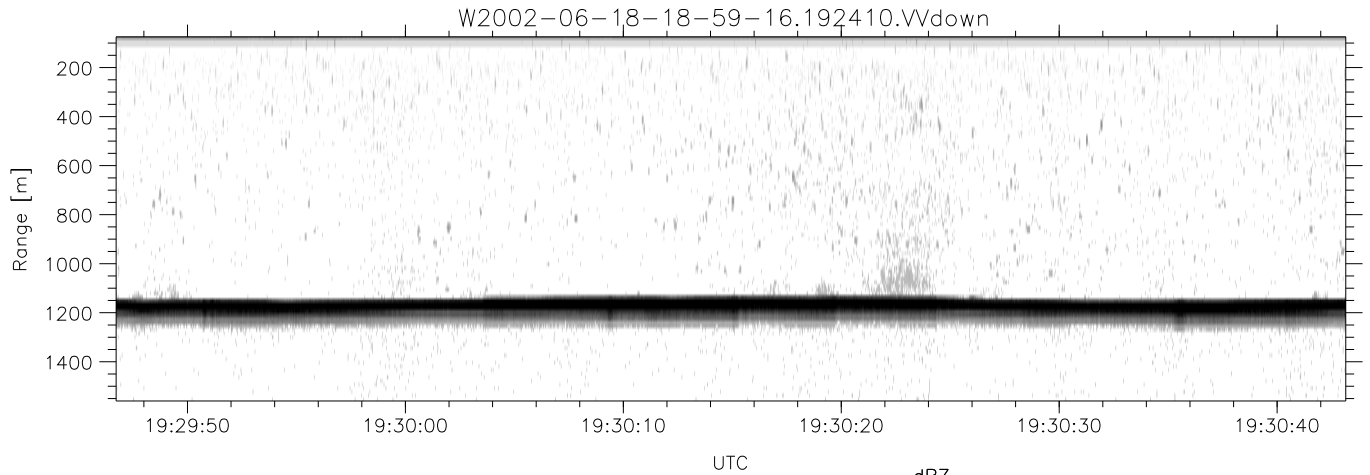
	Min	Max	Mean	Std	Varc%
hhN(dB)	-68.13	-64.85	-66.33	-76.33	10.0
vvN(dB)	-67.31	-63.73	-65.39	-75.36	10.1
hhL(dB)	-16.07	-3.24	-6.10	-13.52	18.1
vvL(dB)	-5.15	0.16	-1.06	-10.30	11.9
ppN(m/s)	-12.60	12.31	0.02	4.13	
ppT(m/s)	-99.54	97.22	0.13	32.63	
hh/vv(dB)	-NaN	99.29	39.42	76.81	5476
vh/hh(dB)	-NaN	-29.76	-50.54	-40.90	920.
hv/vv(dB)	-NaN	-34.97	-50.39	-45.77	289.
hnjmp(dB)	-2.51	2.30	-0.09	-8.60	14.1
vnjmp(dB)	-2.33	2.07	-0.10	-8.57	14.2



IHOP 2002 (dual-antenna config, modes 1,3,4,7) Data (cal: 55.0,50.0)

W2002-06-18-18-59-16 - PPMAG4  
 IRIG:1,UTC: 18:59:07.10 to 19:33:42.18, Dur: 2075s  
 TimeLngth: 2075.08s, TimeInt: 29ms (34.0pps)  
 TimeCor=-13.0s, DSPDif(mn,min,mx):29,28,389  
 PPS(min,max,std): 22,36,2.41  
 Prof: 779 to 71428, NumProf(t/r): 70649/17069  
 ProcTime/Recs: 19:24:10-19:32:32/51207-68275  
 MxACQtime: 33ms; DRate: 190.6KB/s; Flags: 0, 0, 0  
 Pulse: 275ns, IFfilt: 5.0MHz; ppPol: HH HV VV  
 TxPol: HHVV, PRF: 20 10 20 10 kHz  
 Range: Delay 75m, Spacing 15m, Gates 100  
 Ave. Pulses: 84, Rng/Prof Aspect@90m/s: 5.7

	Min	Max	Mean	Std	Varc%
hhN(dB)	-68.13	-64.85	-66.33	-76.33	10.0
vvN(dB)	-67.31	-63.73	-65.39	-75.36	10.1
hhL(dB)	-16.07	-3.24	-6.10	-13.52	18.1
vvL(dB)	-5.15	0.16	-1.06	-10.30	11.9
ppN(m/s)	-12.60	12.31	0.02	4.13	
ppT(m/s)	-99.54	97.22	0.13	32.63	
hh/vv(dB)	-NaN	99.29	39.42	76.81	5476
vh/hh(dB)	-NaN	-29.76	-50.54	-40.90	920.
hv/vv(dB)	-NaN	-34.97	-50.39	-45.77	289.
hnjmp(dB)	-2.51	2.30	-0.09	-8.60	14.1
vnjmp(dB)	-2.33	2.07	-0.10	-8.57	14.2



IHOP 2002 (dual-antenna config, modes 1,3,4,7) Data (cal: 55.0,50.0)

	Min	Max	Mean	Std	Varc%	
W2002-06-18-18-59-16 - PPMAG4						
IRIG:1,UTC: 18:59:07.10 to 19:33:42.18, Dur: 2075s	hhN (dB)	-68.13	-64.85	-66.33	-76.33	10.0
TimeLngth: 2075.08s, TimeInt: 29ms (34.0pps)	vvN (dB)	-67.31	-63.73	-65.39	-75.36	10.1
TimeCor=-13.0s, DSPDif(mn,min,mx):29,28,389	hhL (dB)	-16.07	-3.24	-6.10	-13.52	18.1
PPS(min,max,std): 22,36,2.41	vvL (dB)	-5.15	0.16	-1.06	-10.30	11.9
Prof: 779 to 71428, NumProf(t/r): 70649/17069	ppN (m/s)	-12.60	12.31	0.02	4.13	
ProcTime/Recs: 19:24:10-19:32:32/51207-68275	ppT (m/s)	-99.54	97.22	0.13	32.63	
MxACQtime: 33ms; DRate: 190.6KB/s; Flags: 0, 0, 0	hh/vv (dB)	-NaN	99.29	39.42	76.81	5476
Pulse: 275ns, IFfilt: 5.0MHz; ppPol: HH HV VV	vh/hh (dB)	-NaN	-29.76	-50.54	-40.90	920.
TxPol: HHVV, PRF: 20 10 20 10 kHz	hv/vv (dB)	-NaN	-34.97	-50.39	-45.77	289.
Range: Delay 75m, Spacing 15m, Gates 100	hn/jmp (dB)	-2.51	2.30	-0.09	-8.60	14.1
Ave. Pulses: 84, Rng/Prof Aspect@90m/s: 5.7	vn/jmp (dB)	-2.33	2.07	-0.10	-8.57	14.2