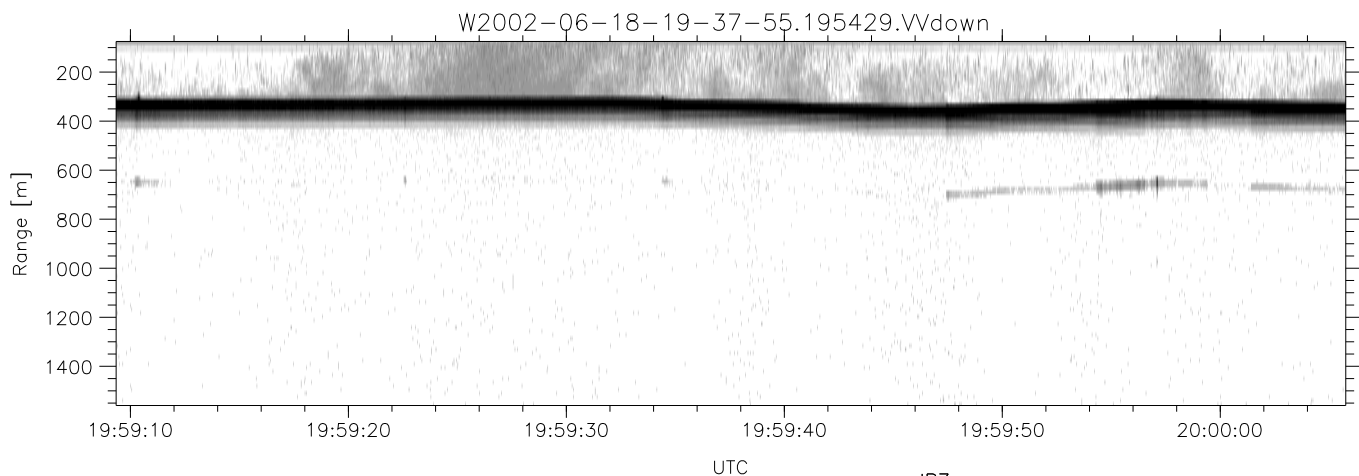
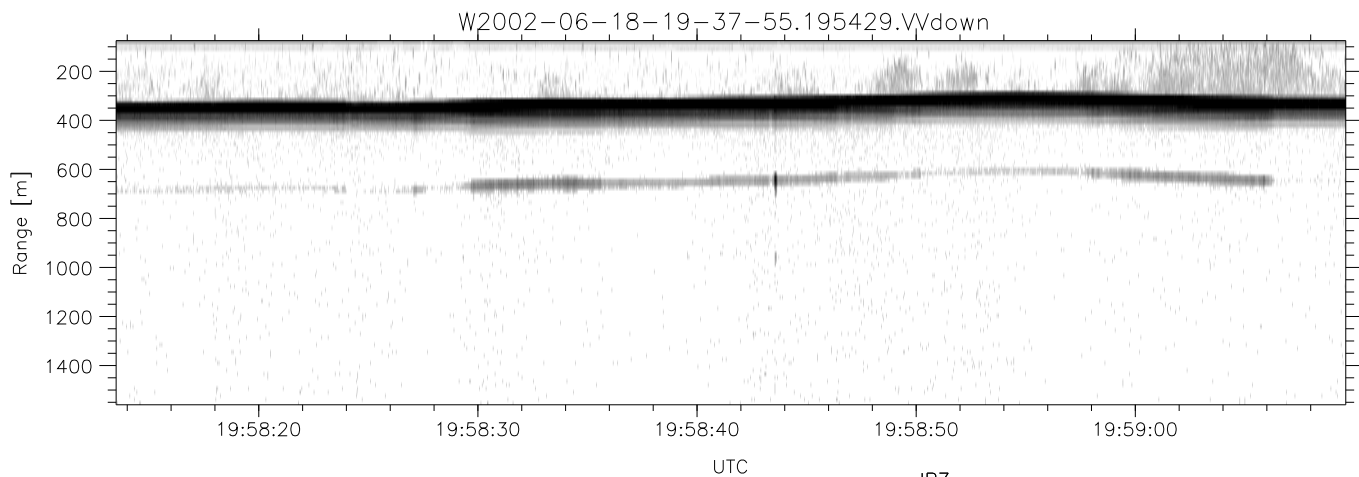
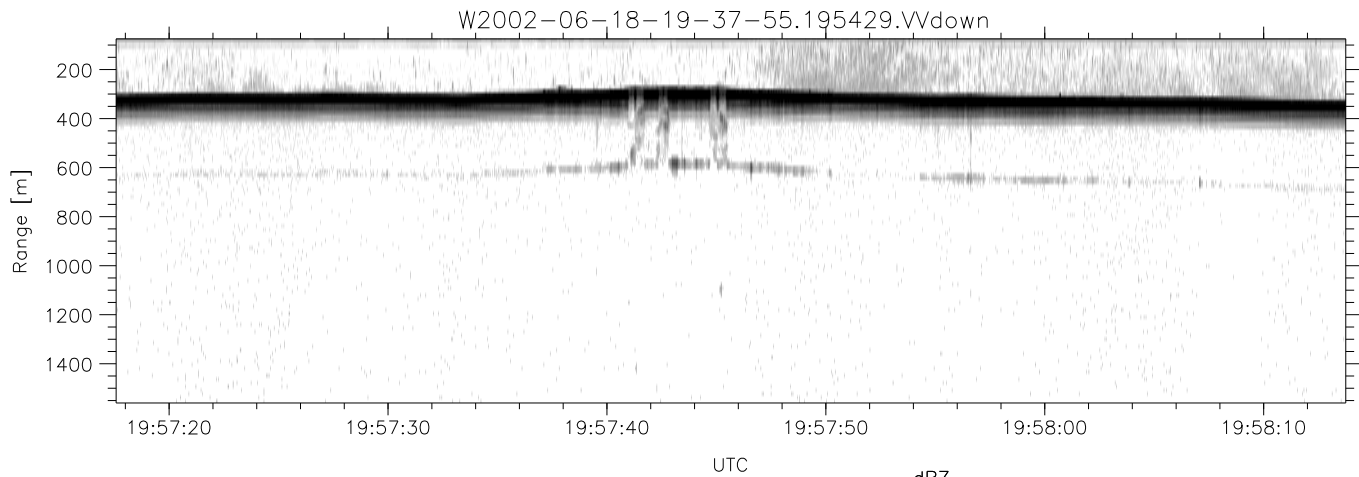


IHOP 2002 (dual-antenna config, modes 1,3,4,7) Data (cal: 49.0,50.0)

W2002-06-18-19-37-55 - PPMAG4
 IRIG:1,UTC: 19:37:46.20 to 20:03:56.54, Dur: 1570s
 TimeLngth: 1570.34s, TimeInt: 29ms (34.0pps)
 TimeCor=-13.0s, DSPDif(mn,min,mx):29,28,372
 PPS(min,max,std): 23,36,2.43
 Prof: 141 to 53585, NumProf(t/r): 53444/17069
 ProcTime/Recs: 19:54:29-20:02:50/34138-51206
 MxACQtime: 33ms; DRate: 190.5KB/s; Flags: 0, 0, 0
 Pulse: 275ns, IFilt: 5.0MHz; ppPol: HH HV VV
 TxPol: HHVV, PRF: 20 10 20 10 kHz
 Range: Delay 75m, Spacing 15m, Gates 100
 Ave. Pulses: 84, Rng/Prof Aspect@90m/s: 5.7

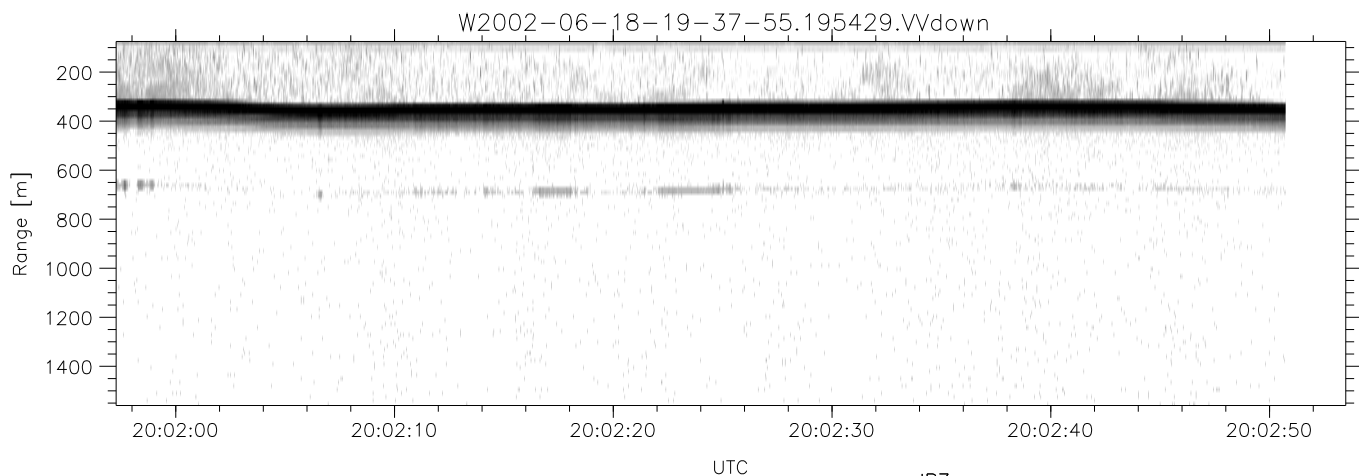
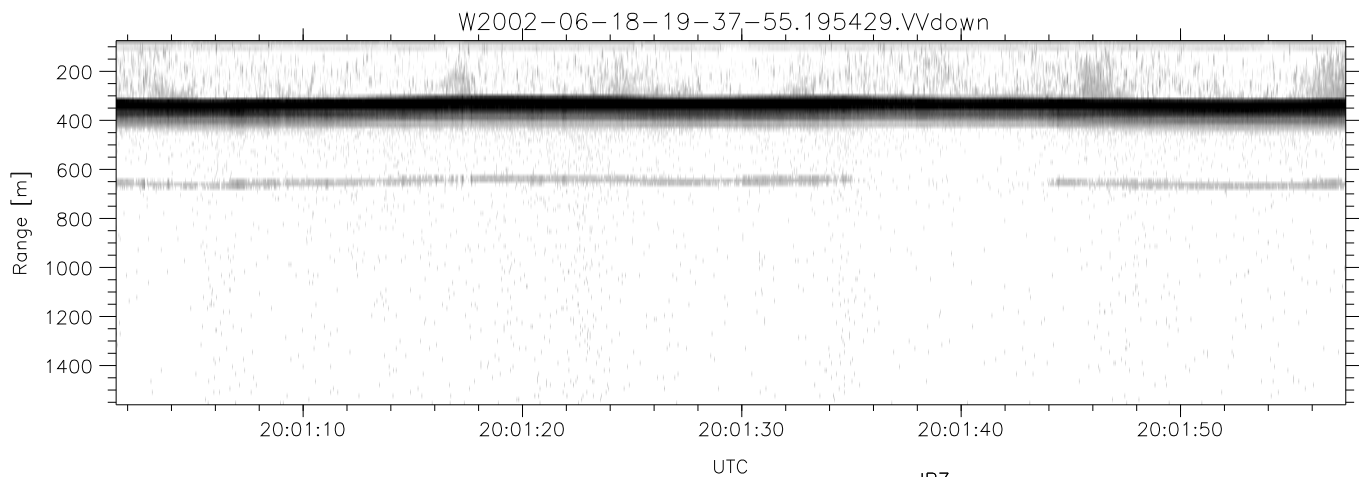
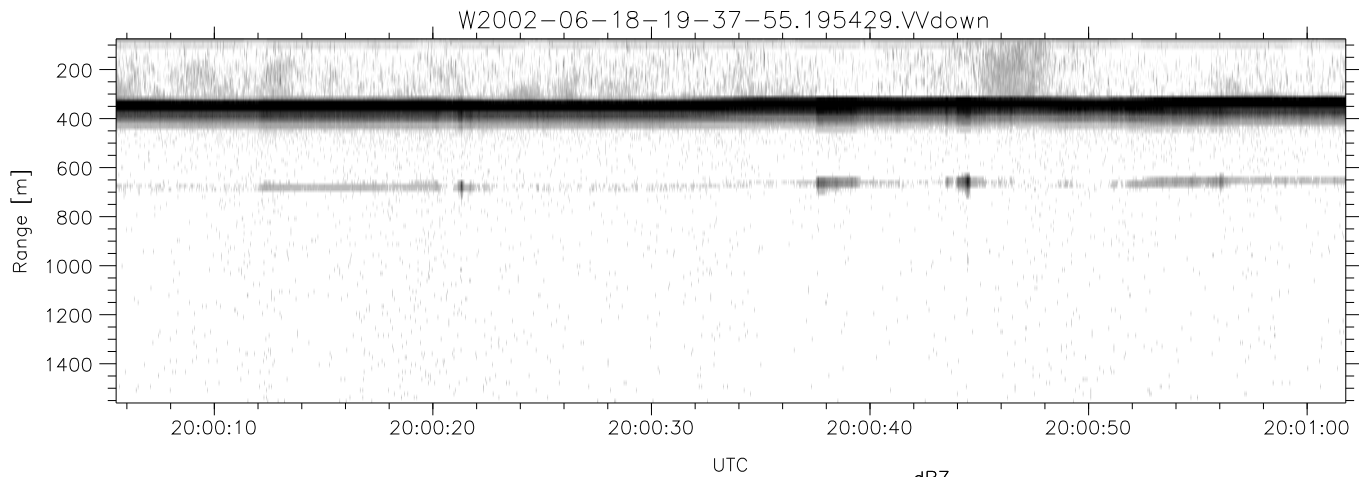
| | Min | Max | Mean | Std | Varc% |
|-----------|--------|--------|--------|--------|-------|
| hhN(dB) | -68.71 | -64.46 | -66.69 | -76.57 | 10.3 |
| vvN(dB) | -67.35 | -63.41 | -65.53 | -75.25 | 10.7 |
| hhL(dB) | -15.78 | -3.30 | -7.36 | -10.87 | 44.5 |
| vvL(dB) | -14.15 | -2.73 | -5.37 | -9.66 | 37.3 |
| ppN(m/s) | -12.52 | 12.25 | 0.19 | 4.15 | |
| ppT(m/s) | -98.89 | 96.77 | 1.52 | 32.78 | |
| hh/vv(dB) | -NaN | 56.06 | 18.86 | 35.90 | 5062 |
| vh/hh(dB) | -NaN | -29.01 | -36.04 | -35.72 | 107. |
| hv/vv(dB) | -NaN | -34.54 | -54.28 | -47.74 | 451. |
| hhjmp(dB) | -2.42 | 2.47 | 0.17 | -8.32 | 14.2 |
| vvjmp(dB) | -2.23 | 2.37 | 0.19 | -8.35 | 14.0 |



IHOP 2002 (dual-antenna config, modes 1,3,4,7) Data (cal: 49.0,50.0)

W2002-06-18-19-37-55 - PPMAG4
 IRIG:1,UTC: 19:37:46.20 to 20:03:56.54, Dur: 1570s
 TimeLngth: 1570.34s, TimeInt: 29ms (34.0pps)
 TimeCor=-13.0s, DSPDif(mn,min,mx):29,28,372
 PPS(min,max,std): 23,36,2.43
 Prof: 141 to 53585, NumProf(t/r): 53444/17069
 ProcTime/Recs: 19:54:29-20:02:50/34138-51206
 MxACQtime: 33ms; DRate: 190.5KB/s; Flags: 0, 0, 0
 Pulse: 275ns, IFfilt: 5.0MHz; ppPol: HH HV VV
 TxPol: HHVV, PRF: 20 10 20 10 kHz
 Range: Delay 75m, Spacing 15m, Gates 100
 Ave. Pulses: 84, Rng/Prof Aspect@90m/s: 5.7

| | Min | Max | Mean | Std | Varc% |
|------------|--------|--------|--------|--------|-------|
| hhN(dB) | -68.71 | -64.46 | -66.69 | -76.57 | 10.3 |
| vvN(dB) | -67.35 | -63.41 | -65.53 | -75.25 | 10.7 |
| hhL(dB) | -15.78 | -3.30 | -7.36 | -10.87 | 44.5 |
| vvL(dB) | -14.15 | -2.73 | -5.37 | -9.66 | 37.3 |
| ppN(m/s) | -12.52 | 12.25 | 0.19 | 4.15 | |
| ppT(m/s) | -98.89 | 96.77 | 1.52 | 32.78 | |
| hh/vv(dB) | -NaN | 56.06 | 18.86 | 35.90 | 5062 |
| vh/hh(dB) | -NaN | -29.01 | -36.04 | -35.72 | 107. |
| hv/vv(dB) | -NaN | -34.54 | -54.28 | -47.74 | 451. |
| hh_jmp(dB) | -2.42 | 2.47 | 0.17 | -8.32 | 14.2 |
| vv_jmp(dB) | -2.23 | 2.37 | 0.19 | -8.35 | 14.0 |



IHOP 2002 (dual-antenna config, modes 1,3,4,7) Data (cal: 49.0,50.0)

W2002-06-18-19-37-55 - PPMAG4
 IRIG:1,UTC: 19:37:46.20 to 20:03:56.54, Dur: 1570s
 TimeLngth: 1570.34s, TimeInt: 29ms (34.0pps)
 TimeCor=-13.0s, DSPDif(mn,min,mx):29,28,372
 PPS(min,max,std): 23,36,2.43
 Prof: 141 to 53585, NumProf(t/r): 53444/17069
 ProcTime/Recs: 19:54:29-20:02:50/34138-51206
 MxACQtime: 33ms; DRate: 190.5KB/s; Flags: 0, 0, 0
 Pulse: 275ns, IFfilt: 5.0MHz; ppPol: HH HV VV
 TxPol: HHVV, PRF: 20 10 20 10 kHz
 Range: Delay 75m, Spacing 15m, Gates 100
 Ave. Pulses: 84, Rng/Prof Aspect@90m/s: 5.7

| | Min | Max | Mean | Std | Varc% |
|-----------|--------|--------|--------|--------|-------|
| hhN(dB) | -68.71 | -64.46 | -66.69 | -76.57 | 10.3 |
| vvN(dB) | -67.35 | -63.41 | -65.53 | -75.25 | 10.7 |
| hhL(dB) | -15.78 | -3.30 | -7.36 | -10.87 | 44.5 |
| vvL(dB) | -14.15 | -2.73 | -5.37 | -9.66 | 37.3 |
| ppN(m/s) | -12.52 | 12.25 | 0.19 | 4.15 | |
| ppT(m/s) | -98.89 | 96.77 | 1.52 | 32.78 | |
| hh/vv(dB) | -NaN | 56.06 | 18.86 | 35.90 | 5062 |
| vh/hh(dB) | -NaN | -29.01 | -36.04 | -35.72 | 107. |
| hv/vv(dB) | -NaN | -34.54 | -54.28 | -47.74 | 451. |
| hnjmp(dB) | -2.42 | 2.47 | 0.17 | -8.32 | 14.2 |
| vnjmp(dB) | -2.23 | 2.37 | 0.19 | -8.35 | 14.0 |