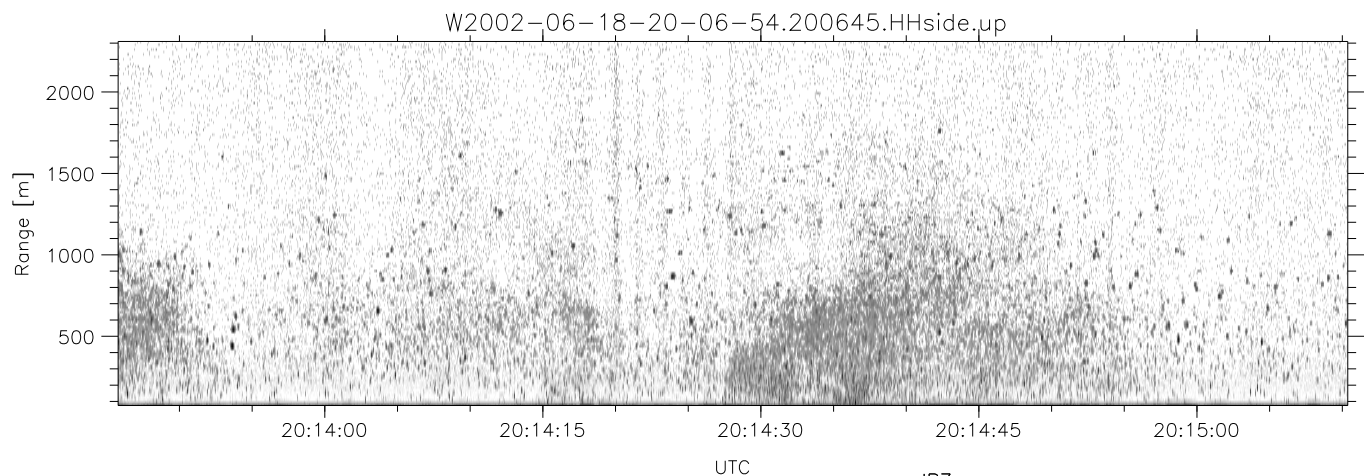
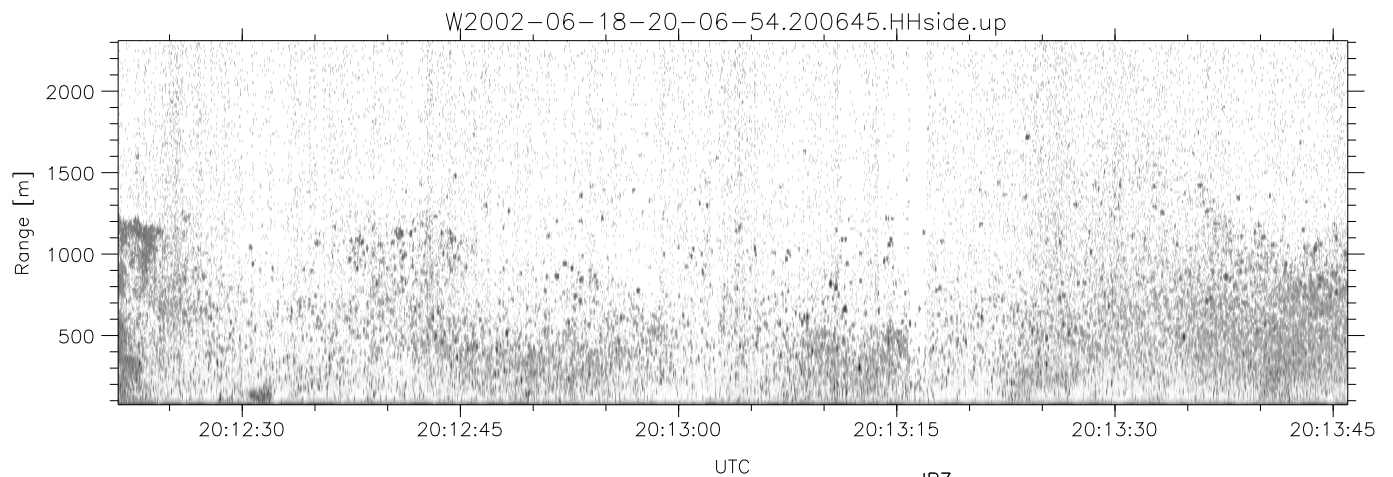
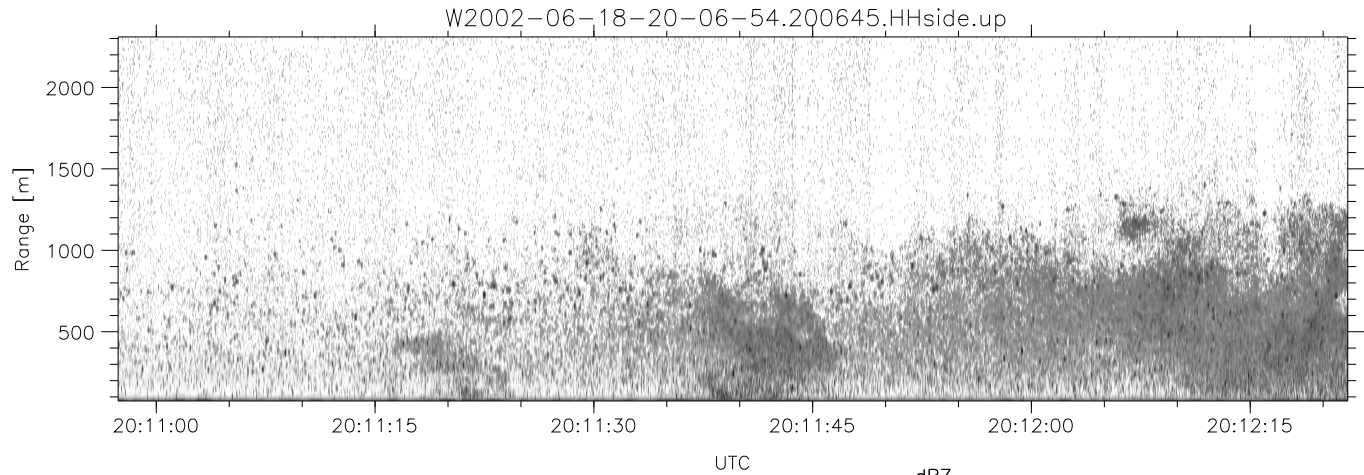


IHOP 2002 (dual-antenna config, modes 1,3,4,7) Data (cal: 49.0,50.0)

W2002-06-18-20-06-54 - SPPMAG
 IRIG:1,UTC: 20:06:45.13 to 20:15:45.25, Dur: 540s
 TimeLngth: 540.13s, TimeInt: 24ms (40.4pps)
 TimeCor=-13.0s, DSPDif(mn,min,mx):24,20,414
 PPS(min,max,std): 28,42,2.78
 Prof: 519 to 22368, NumProf(t/r): 21849/21849
 MxACQtime: 17ms; DRate: 96.9KB/s; Flags: 0, 0, 0
 Pulse: 275ns, IFfilt: 5.0MHz; ppPol: HH
 TxPol: H, PRF: 20 kHz
 Range: Delay 75m, Spacing 15m, Gates 150
 Ave. Pulses: 348, Rng/Prof Aspect@90m/s: 6.7

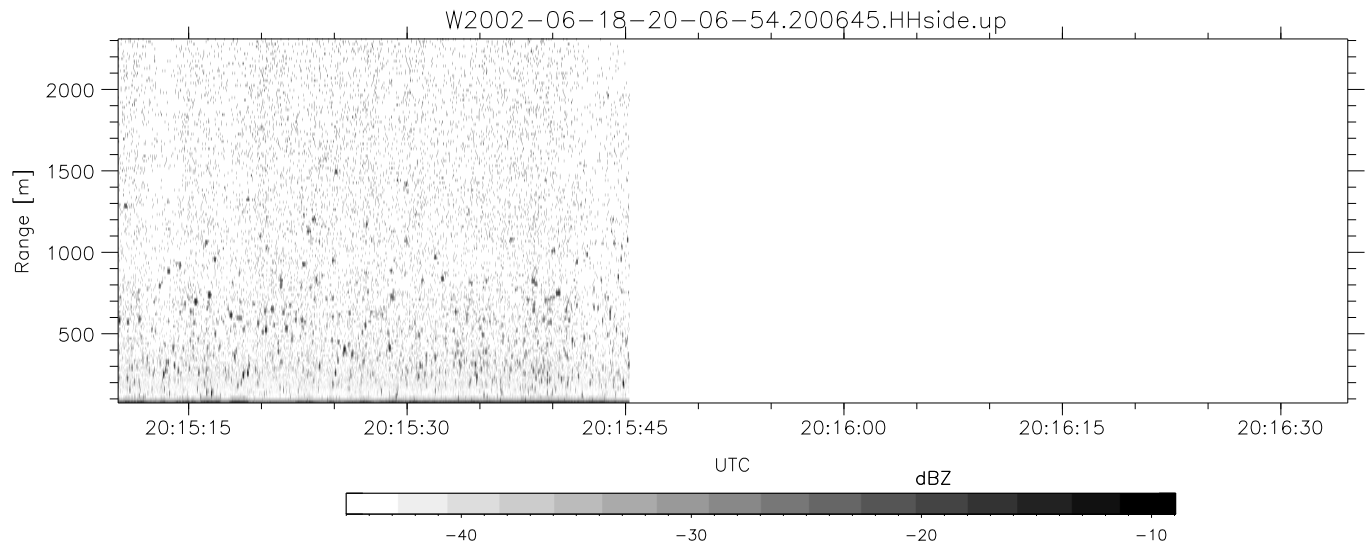
	Min	Max	Mean	Std	Varc%
hhN(dB)	-67.55	-64.98	-66.62	-78.16	7.0
vvN(dB)	-66.57	-64.53	-65.63	-78.30	5.4
hhL(dB)	-21.50	-6.56	-11.51	-14.69	48.1
vhL(dB)	-29.07	-7.47	-14.24	-14.83	87.3
ppN(m/s)	-15.80	15.80	0.19	9.09	
ppT(m/s)	-0.06	0.02	-0.01	0.01	
vh/hh(dB)	-NaN	3.73	-9.18	-3.99	330.
hnjmp(dB)	-1.02	1.21	0.14	-11.48	6.9
vnjmp(dB)	-1.01	1.36	0.15	-11.42	7.0



IHOP 2002 (dual-antenna config, modes 1,3,4,7) Data (cal: 49.0,50.0)

W2002-06-18-20-06-54 - SPPMAG
 IRIG:1,UTC: 20:06:45.13 to 20:15:45.25, Dur: 540s
 TimeLngth: 540.13s, TimeInt: 24ms (40.4pps)
 TimeCor=-13.0s, DSPDif(mn,min,mx):24,20,414
 PPS(min,max,std): 28,42,2.78
 Prof: 519 to 22368, NumProf(t/r): 21849/21849
 MxACQtime: 17ms; DRate: 96.9KB/s; Flags: 0, 0, 0
 Pulse: 275ns, IFfilt: 5.0MHz; ppPol: HH
 TxPol: H, PRF: 20 kHz
 Range: Delay 75m, Spacing 15m, Gates 150
 Ave. Pulses: 348, Rng/Prof Aspect@90m/s: 6.7

	Min	Max	Mean	Std	Varc%
hhN (dB)	-67.55	-64.98	-66.62	-78.16	7.0
vvN (dB)	-66.57	-64.53	-65.63	-78.30	5.4
hhL (dB)	-21.50	-6.56	-11.51	-14.69	48.1
vhL (dB)	-29.07	-7.47	-14.24	-14.83	87.3
ppN (m/s)	-15.80	15.80	0.19	9.09	
ppT (m/s)	-0.06	0.02	-0.01	0.01	
vh/hh (dB)	-NaN	3.73	-9.18	-3.99	330.
hnjmp (dB)	-1.02	1.21	0.14	-11.48	6.9
vnjmp (dB)	-1.01	1.36	0.15	-11.42	7.0



IHOP 2002 (dual-antenna config, modes 1,3,4,7) Data (cal: 49.0,50.0)

W2002-06-18-20-06-54 - SPPMAG						
IRIG:1,UTC: 20:06:45.13 to 20:15:45.25, Dur: 540s	hhN(dB)	Min	Max	Mean	Std	Varc%
TimeLngth: 540.13s, TimeInt: 24ms (40.4pps)	vvN(dB)	-67.55	-64.98	-66.62	-78.16	7.0
TimeCor=-13.0s, DSPDif(mn,min,mx):24,20,414	hhL(dB)	-66.57	-64.53	-65.63	-78.30	5.4
PPS(min,max,std): 28,42,2.78	vhL(dB)	-21.50	-6.56	-11.51	-14.69	48.1
Prof: 519 to 22368, NumProf(t/r): 21849/21849	ppT(m/s)	-29.07	-7.47	-14.24	-14.83	87.3
MxACQtime: 17ms; DRate: 96.9KB/s; Flags: 0, 0, 0	ppN(m/s)	-15.80	15.80	0.19	9.09	
Pulse: 275ns, IFfilt: 5.0MHz; ppPol: HH	vh/hh(dB)	-NaN	3.73	-9.18	-3.99	330.
TxPol: H, PRF: 20 kHz	hnjmp(dB)	-1.02	1.21	0.14	-11.48	6.9
Range: Delay 75m, Spacing 15m, Gates 150	vnjmp(dB)	-1.01	1.36	0.15	-11.42	7.0
Ave. Pulses: 348, Rng/Prof Aspect@90m/s: 6.7						