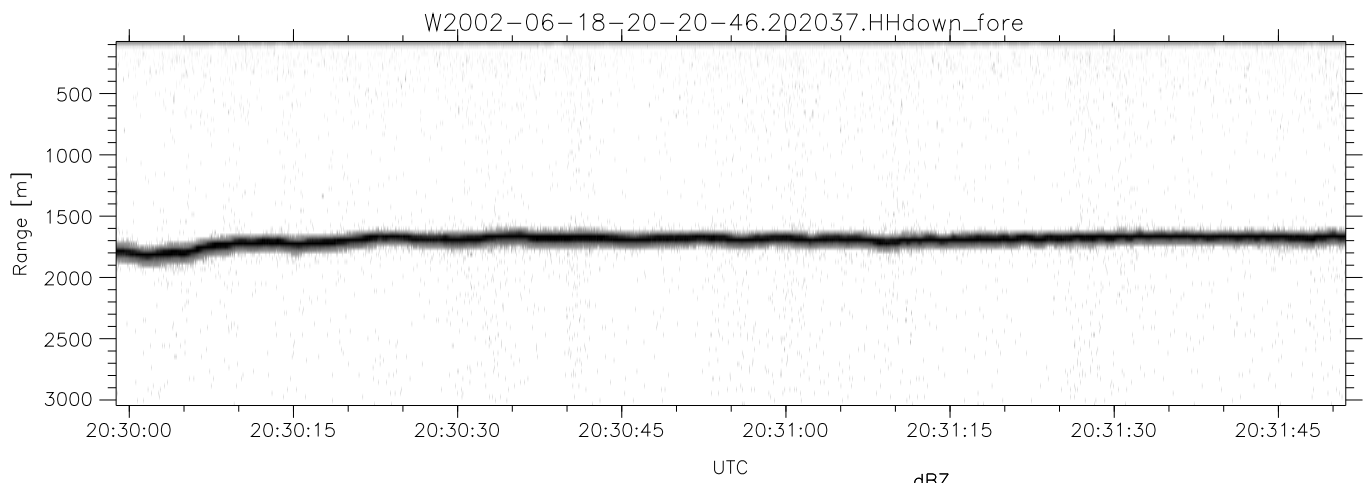
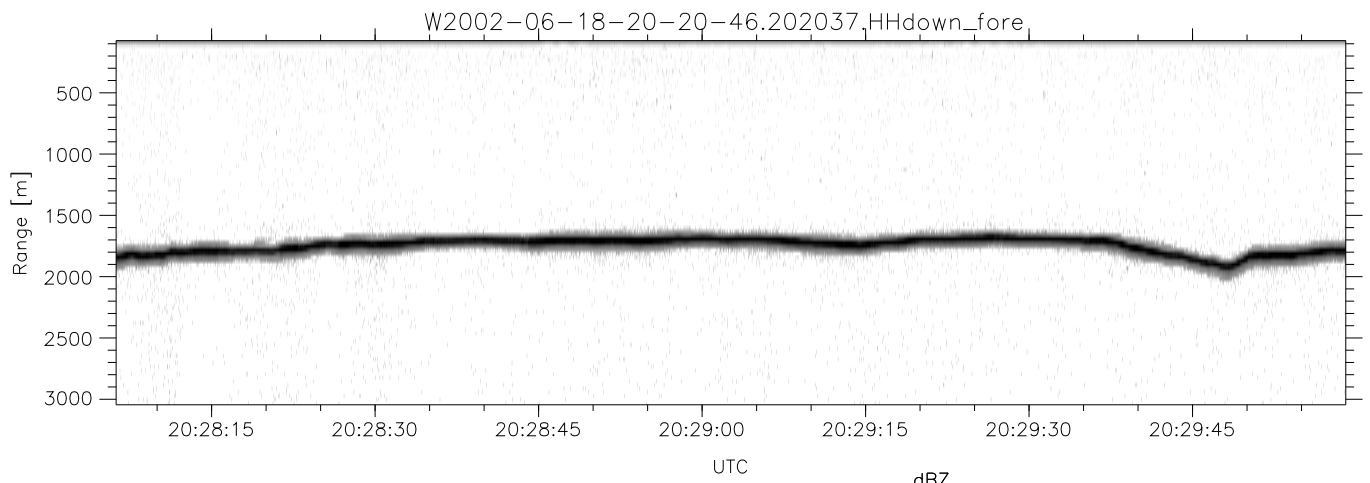
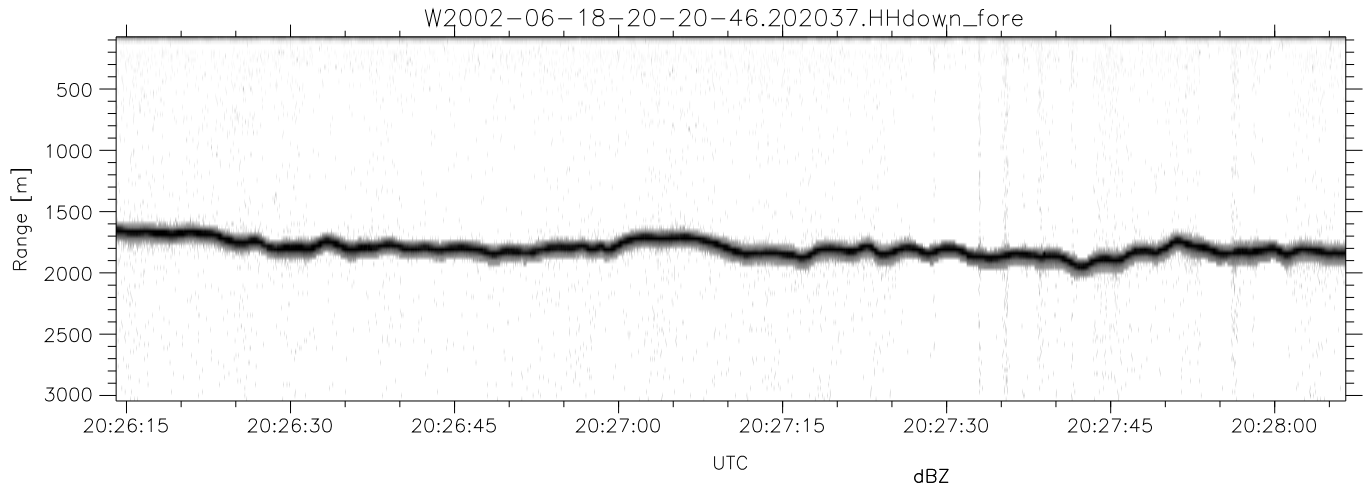


IHOP 2002 (dual-antenna config, modes 1,3,4,7) Data (cal: 55.0,50.0)

W2002-06-18-20-20-46 - PPMAG4
 IRIG:1,UTC: 20:20:37.34 to 20:32:15.85, Dur: 698s
 TimeLngth: 698.51s, TimeInt: 29ms (34.3pps)
 TimeCor=-13.0s, DSPDif(mn,min,mx):29,28,377
 PPS(min,max,std): 24,36,2.24
 Prof: 132 to 24074, NumProf(t/r): 23942/23942
 MxACQtime: 33ms; DRate: 191.9KB/s; Flags: 0, 0, 0
 Pulse: 275ns, IFfilt: 5.0MHz; ppPol: HH HV VV
 TxPol: HHVV, PRF: 20 10 20 10 kHz
 Range: Delay 75m, Spacing 30m, Gates 100
 Ave. Pulses: 84, Rng/Prof Aspect@90m/s: 11.4

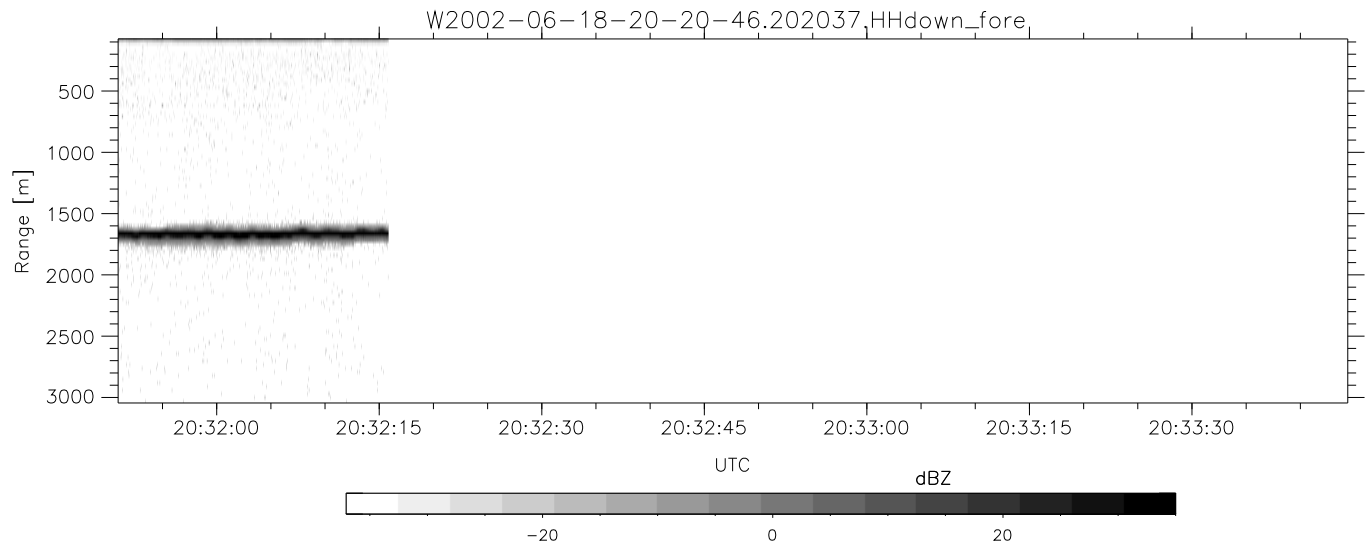
	Min	Max	Mean	Std	Varc%
hhN(dB)	-68.39	-63.03	-66.58	-75.25	13.6
vvN(dB)	-67.69	-62.41	-65.70	-74.34	13.7
hhL(dB)	-11.13	-3.33	-5.07	-11.86	21.0
vvL(dB)	-9.36	-0.62	-2.13	-8.33	24.0
ppN(m/s)	-12.52	12.45	0.08	4.14	
ppT(m/s)	-98.91	98.32	0.67	32.70	
hh/vv(dB)	-NaN	98.03	49.10	74.74	3662
vh/hh(dB)	-NaN	-24.05	-49.19	-38.64	1134
hv/vv(dB)	-NaN	-30.18	-52.57	-45.38	522.
hn_jmp(dB)	-2.75	2.83	-0.09	-8.61	14.1
vn_jmp(dB)	-2.51	2.34	-0.10	-8.55	14.3



IHOP 2002 (dual-antenna config, modes 1,3,4,7) Data (cal: 55.0,50.0)

W2002-06-18-20-20-46 - PPMAG4
 IRIG:1,UTC: 20:20:37.34 to 20:32:15.85, Dur: 698s
 TimeLngth: 698.51s, TimeInt: 29ms (34.3pps)
 TimeCor=-13.0s, DSPDif(mn,min,mx):29,28,377
 PPS(min,max,std): 24,36,2.24
 Prof: 132 to 24074, NumProf(t/r): 23942/23942
 MxACQtime: 33ms; DRate: 191.9KB/s; Flags: 0, 0, 0
 Pulse: 275ns, IFfilt: 5.0MHz; ppPol: HH HV VV
 TxPol: HHVV, PRF: 20 10 20 10 kHz
 Range: Delay 75m, Spacing 30m, Gates 100
 Ave. Pulses: 84, Rng/Prof Aspect@90m/s: 11.4

	Min	Max	Mean	Std	Varc%
hhN(dB)	-68.39	-63.03	-66.58	-75.25	13.6
vvN(dB)	-67.69	-62.41	-65.70	-74.34	13.7
hhL(dB)	-11.13	-3.33	-5.07	-11.86	21.0
vvL(dB)	-9.36	-0.62	-2.13	-8.33	24.0
ppN(m/s)	-12.52	12.45	0.08	4.14	
ppT(m/s)	-98.91	98.32	0.67	32.70	
hh/vv(dB)	-NaN	98.03	49.10	74.74	3662
vh/hh(dB)	-NaN	-24.05	-49.19	-38.64	1134
hv/vv(dB)	-NaN	-30.18	-52.57	-45.38	522.
hn_jmp(dB)	-2.75	2.83	-0.09	-8.61	14.1
vn_jmp(dB)	-2.51	2.34	-0.10	-8.55	14.3



IHOP 2002 (dual-antenna config, modes 1,3,4,7) Data (cal: 55.0,50.0)

W2002-06-18-20-20-46 - PPMAG4						
IRIG:1,UTC: 20:20:37.34 to 20:32:15.85, Dur: 698s	hhN (dB)	Min	Max	Mean	Std	Var%
TimeLngth: 698.51s, TimeInt: 29ms (34.3pps)	vvN (dB)	-68.39	-63.03	-66.58	-75.25	13.6
TimeCor=-13.0s, DSPDif(mn,min,mx):29,28,377	hhL (dB)	-67.69	-62.41	-65.70	-74.34	13.7
PPS(min,max,std): 24,36,2.24	vvL (dB)	-11.13	-3.33	-5.07	-11.86	21.0
Prof: 132 to 24074, NumProf(t/r): 23942/23942	ppN (m/s)	-9.36	-0.62	-2.13	-8.33	24.0
MxACQtime: 33ms; DRate: 191.9KB/s; Flags: 0, 0, 0	ppT (m/s)	-12.52	12.45	0.08	4.14	
Pulse: 275ns, IFfilt: 5.0MHz; ppPol: HH HV VV	hh/vv (dB)	-98.91	98.32	0.67	32.70	
TxPol: HHVV, PRF: 20 10 20 10 kHz	vh/vv (dB)	-NaN	98.03	49.10	74.74	3662
Range: Delay 75m, Spacing 30m, Gates 100	hh/hh (dB)	-NaN	-24.05	-49.19	-38.64	1134
Ave. Pulses: 84, Rng/Prof Aspect@90m/s: 11.4	hv/vv (dB)	-NaN	-30.18	-52.57	-45.38	522.
	hn/jmp (dB)	-2.75	2.83	-0.09	-8.61	14.1
	vn/jmp (dB)	-2.51	2.34	-0.10	-8.55	14.3