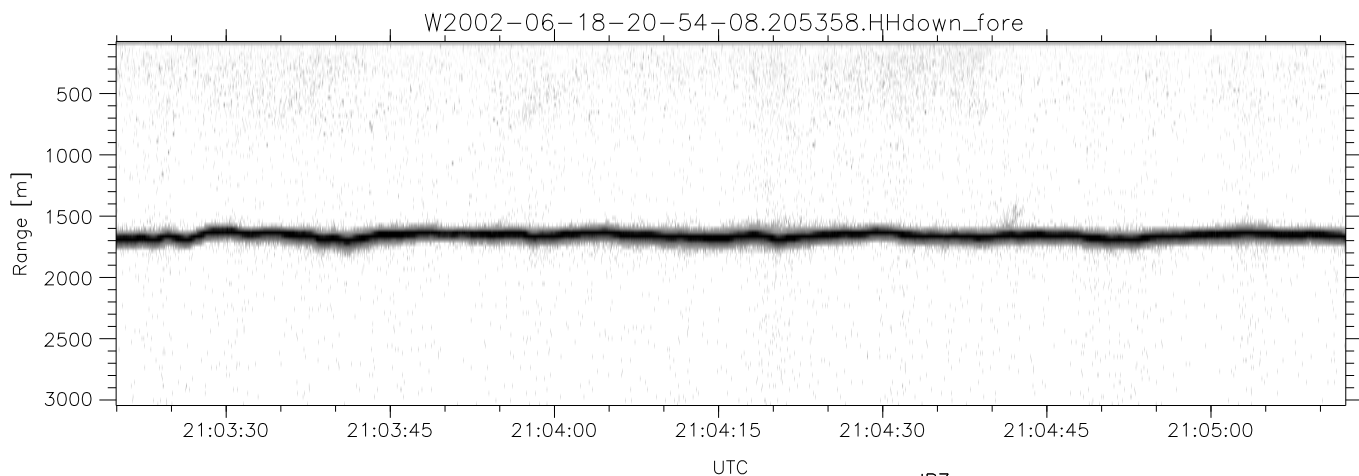
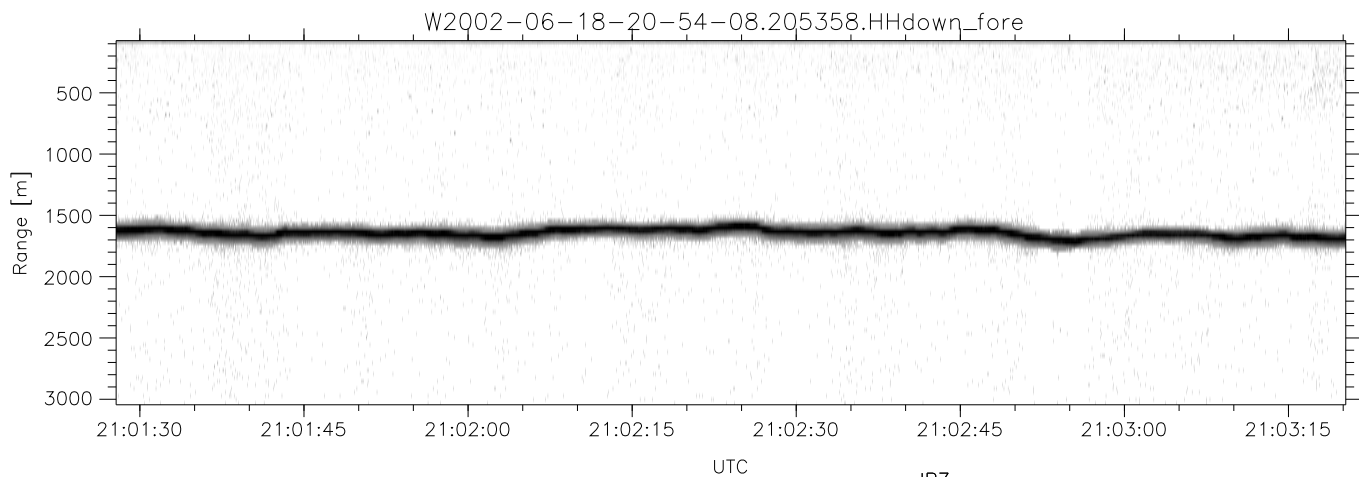
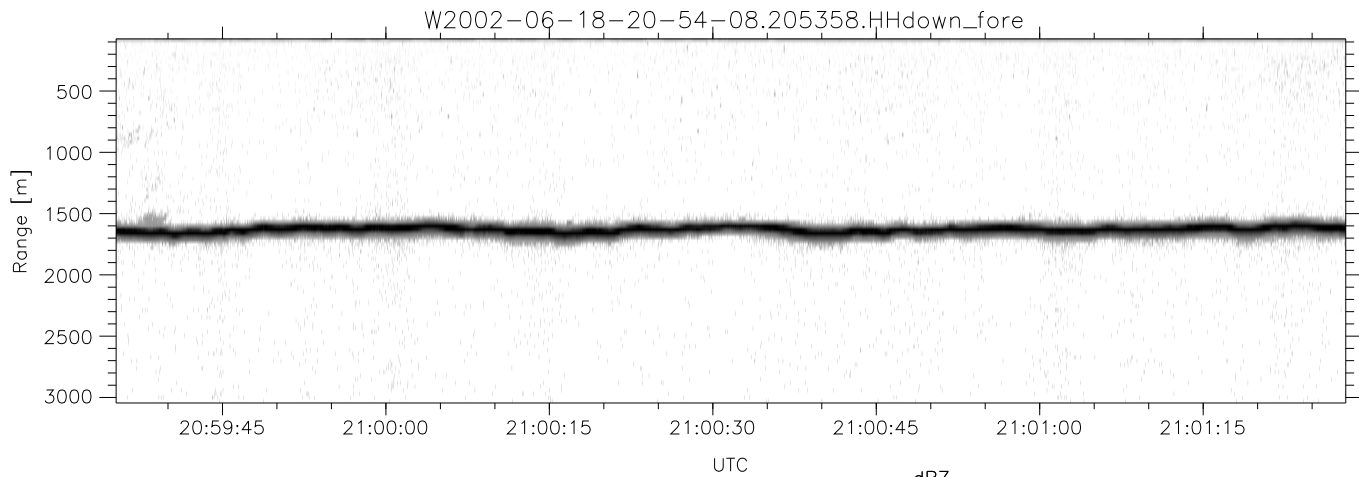


IHOP 2002 (dual-antenna config, modes 1,3,4,7) Data (cal: 55.0,50.0)

W2002-06-18-20-54-08 - PPMAG4
 IRIG:1,UTC: 20:53:58.64 to 21:06:10.14, Dur: 732s
 TimeLngth: 731.51s, TimeInt: 29ms (34.3pps)
 TimeCor=-13.0s, DSPDif(mn,min,mx):29,28,364
 PPS(min,max,std): 20,36,2.27
 Prof: 381 to 25445, NumProf(t/r): 25064/25064
 MxACQtime: 33ms; DRate: 191.8KB/s; Flags: 0, 0, 0
 Pulse: 275ns, IFfilt: 5.0MHz; ppPol: HH HV VV
 TxPol: HHVV, PRF: 20 10 20 10 kHz
 Range: Delay 75m, Spacing 30m, Gates 100
 Ave. Pulses: 84, Rng/Prof Aspect@90m/s: 11.4

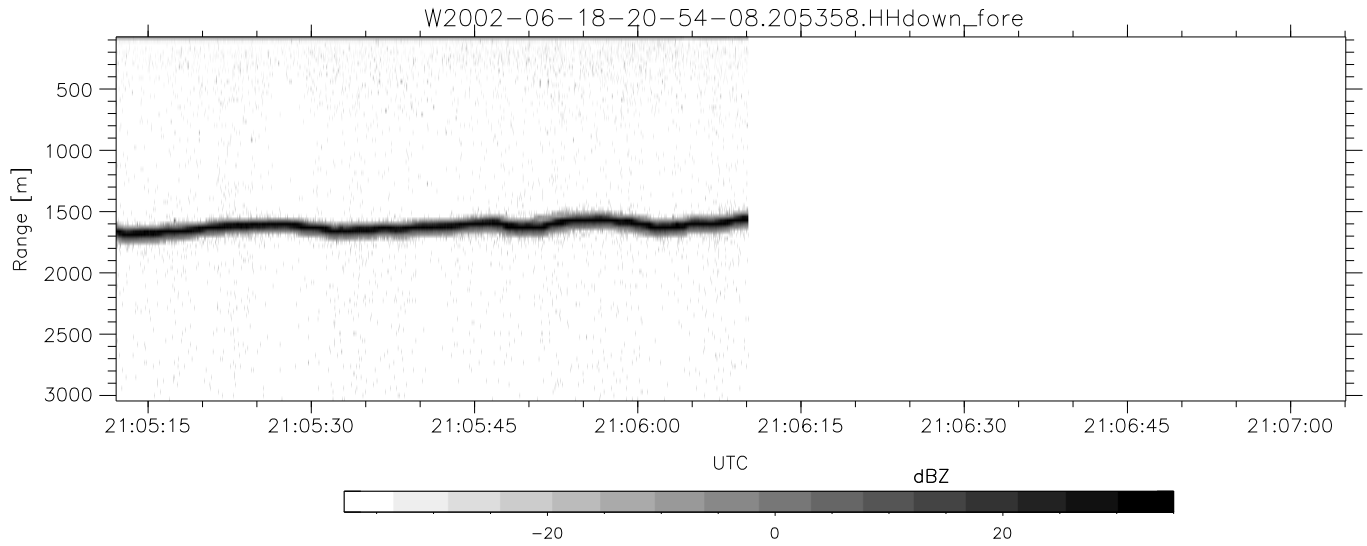
	Min	Max	Mean	Std	Varc%
hhN(dB)	-68.30	-63.81	-66.26	-76.23	10.1
vvN(dB)	-67.22	-62.96	-65.40	-75.29	10.3
hhL(dB)	-22.08	-2.67	-7.82	-10.81	50.2
vvL(dB)	-15.85	0.78	-2.00	-7.45	28.5
ppN(m/s)	-12.76	12.93	-0.04	4.11	
ppT(m/s)	-100.7	102.11	-0.29	32.50	
hh/vv(dB)	-NaN	99.73	51.60	75.49	2447
vh/hh(dB)	-NaN	-29.01	-49.35	-41.12	665.
hv/vv(dB)	-NaN	-34.61	-51.61	-46.63	315.
hn_jmp(dB)	-1.94	2.55	0.18	-8.40	13.9
vn_jmp(dB)	-2.34	2.31	0.18	-8.25	14.3



IHOP 2002 (dual-antenna config, modes 1,3,4,7) Data (cal: 55.0,50.0)

W2002-06-18-20-54-08 - PPMAG4
 IRIG:1,UTC: 20:53:58.64 to 21:06:10.14, Dur: 732s
 TimeLngth: 731.51s, TimeInt: 29ms (34.3pps)
 TimeCor=-13.0s, DSPDif(mn,min,mx):29,28,364
 PPS(min,max,std): 20,36,2.27
 Prof: 381 to 25445, NumProf(t/r): 25064/25064
 MxACQtime: 33ms; DRate: 191.8KB/s; Flags: 0, 0, 0
 Pulse: 275ns, IFfilt: 5.0MHz; ppPol: HH HV VV
 TxPol: HHVV, PRF: 20 10 20 10 kHz
 Range: Delay 75m, Spacing 30m, Gates 100
 Ave. Pulses: 84, Rng/Prof Aspect@90m/s: 11.4

	Min	Max	Mean	Std	Varc%
hhN(dB)	-68.30	-63.81	-66.26	-76.23	10.1
vvN(dB)	-67.22	-62.96	-65.40	-75.29	10.3
hhL(dB)	-22.08	-2.67	-7.82	-10.81	50.2
vvL(dB)	-15.85	0.78	-2.00	-7.45	28.5
ppN(m/s)	-12.76	12.93	-0.04	4.11	
ppT(m/s)	-100.7	102.11	-0.29	32.50	
hh/vv(dB)	-NaN	99.73	51.60	75.49	2447
vh/hh(dB)	-NaN	-29.01	-49.35	-41.12	665.
hv/vv(dB)	-NaN	-34.61	-51.61	-46.63	315.
hn_jmp(dB)	-1.94	2.55	0.18	-8.40	13.9
vn_jmp(dB)	-2.34	2.31	0.18	-8.25	14.3



IHOP 2002 (dual-antenna config, modes 1,3,4,7) Data (cal: 55.0,50.0)

W2002-06-18-20-54-08 - PPMAG4						
IRIG:1,UTC: 20:53:58.64 to 21:06:10.14, Dur: 732s	hhN (dB)	Min	Max	Mean	Std	Varc%
TimeLngth: 731.51s, TimeInt: 29ms (34.3pps)	vvN (dB)	-68.30	-63.81	-66.26	-76.23	10.1
TimeCor=-13.0s, DSPDif(mn,min,mx):29,28,364	hhL (dB)	-67.22	-62.96	-65.40	-75.29	10.3
PPS(min,max,std): 20,36,2.27	vvL (dB)	-22.08	-2.67	-7.82	-10.81	50.2
Prof: 381 to 25445, NumProf(t/r): 25064/25064	ppN (m/s)	-15.85	0.78	-2.00	-7.45	28.5
MxACQtime: 33ms; DRate: 191.8KB/s; Flags: 0, 0, 0	ppT (m/s)	-12.76	12.93	-0.04	4.11	
Pulse: 275ns, IFfilt: 5.0MHz; ppPol: HH HV VV	hh/vv (dB)	-100.7	102.11	-0.29	32.50	
TxPol: HHVV, PRF: 20 10 20 10 kHz	vh/vv (dB)	-NaN	99.73	51.60	75.49	2447
Range: Delay 75m, Spacing 30m, Gates 100	hh/vv (dB)	-NaN	-29.01	-49.35	-41.12	665.
Ave. Pulses: 84, Rng/Prof Aspect@90m/s: 11.4	hv/vv (dB)	-NaN	-34.61	-51.61	-46.63	315.
	hn/jmp (dB)	-1.94	2.55	0.18	-8.40	13.9
	vn/jmp (dB)	-2.34	2.31	0.18	-8.25	14.3