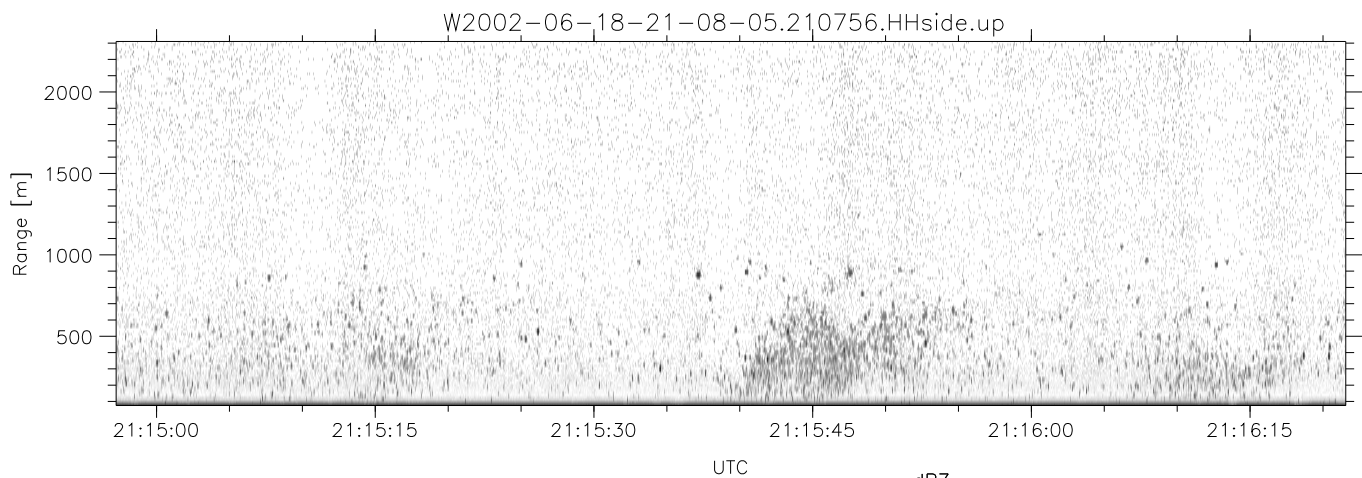
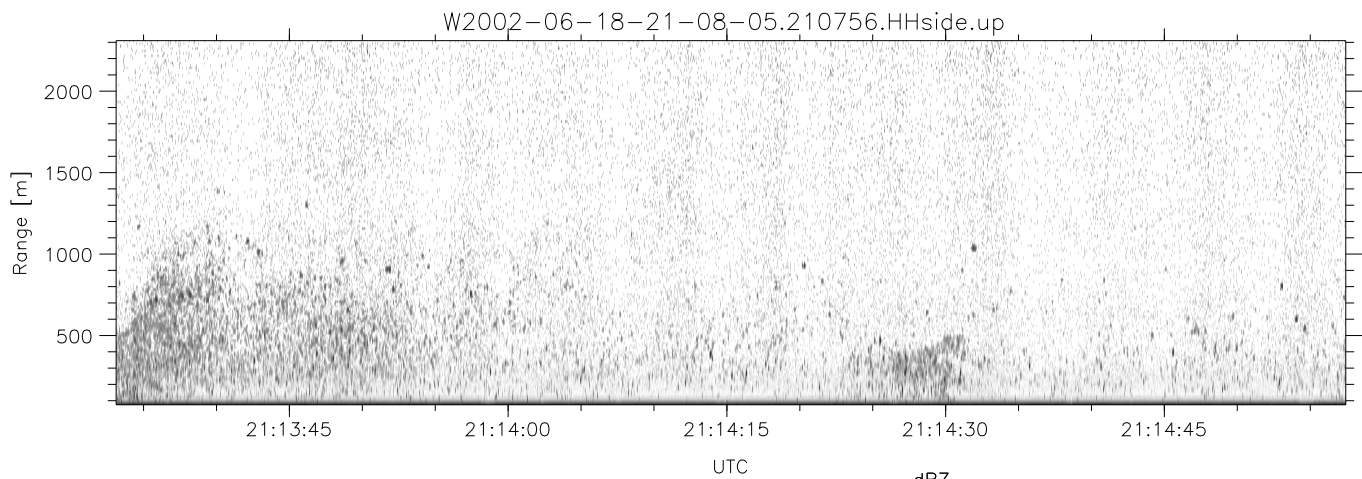
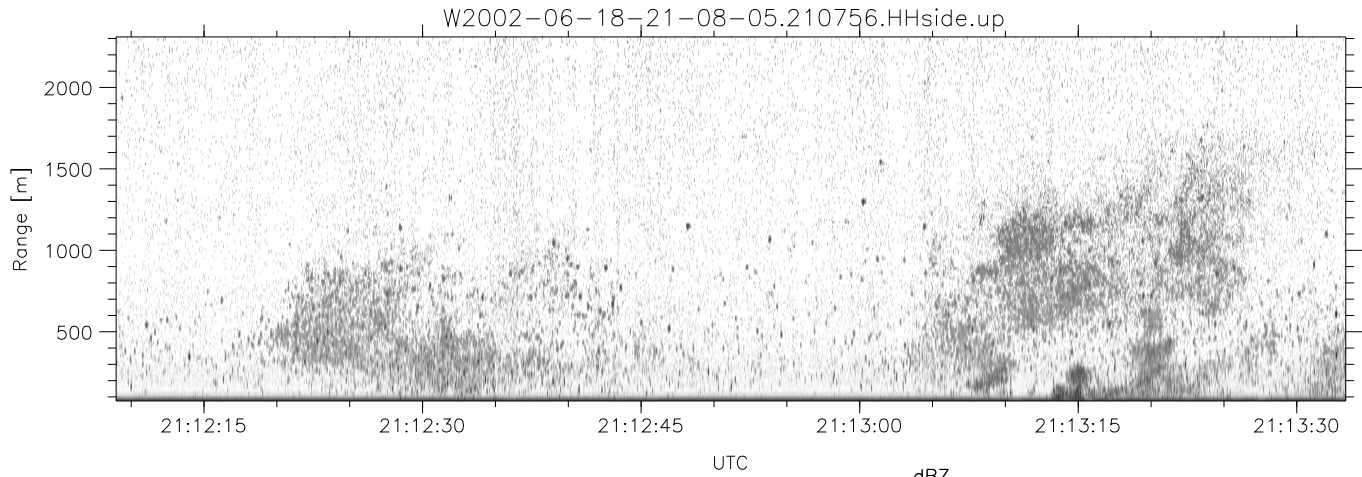


IHOP 2002 (dual-antenna config, modes 1,3,4,7) Data (cal: 49.0,50.0)

W2002-06-18-21-08-05 - SPPMAG  
 IRIG:1,UTC: 21:07:56.48 to 21:37:31.25, Dur: 1775s  
 TimeLngth: 1774.77s, TimeInt: 24ms (40.4pps)  
 TimeCor=-13.0s, DSPDif(mn,min,mx):24,20,420  
 PPS(min,max,std): 21,42,2.89  
 Prof: 175 to 71879, NumProf(t/r): 71704/30122  
 ProcTime/Recs: 21:07:56-21:20:21/0-30121  
 MxACQtime: 17ms; DRate: 96.7KB/s; Flags: 0, 0, 0  
 Pulse: 275ns, IFfilt: 5.0MHz; ppPol: HH  
 TxPol: H, PRF: 20 kHz  
 Range: Delay 75m, Spacing 15m, Gates 150  
 Ave. Pulses: 348, Rng/Prof Aspect@90m/s: 6.7

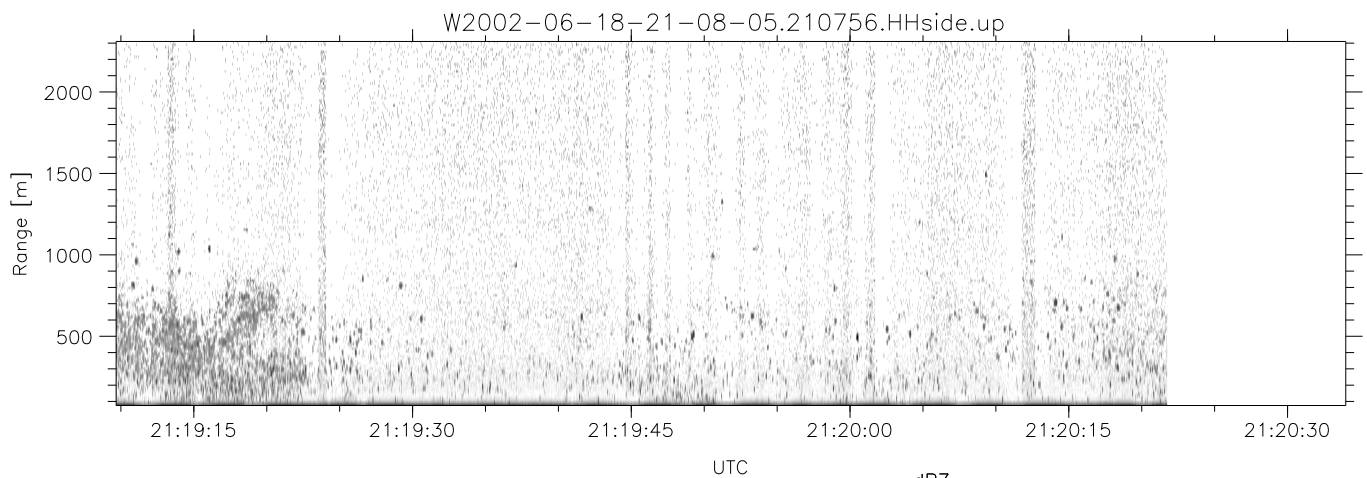
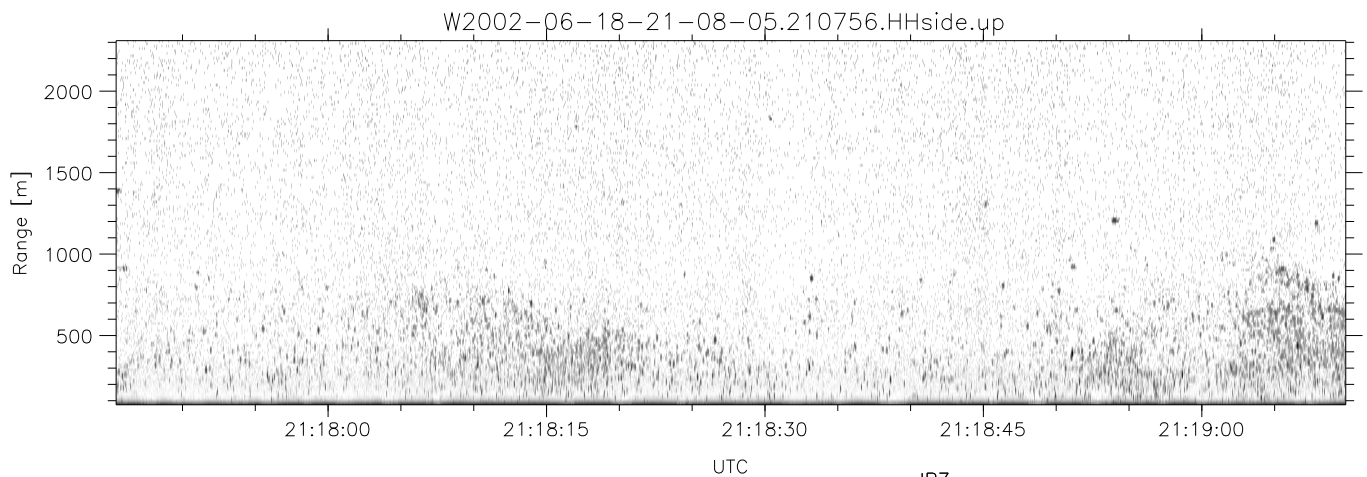
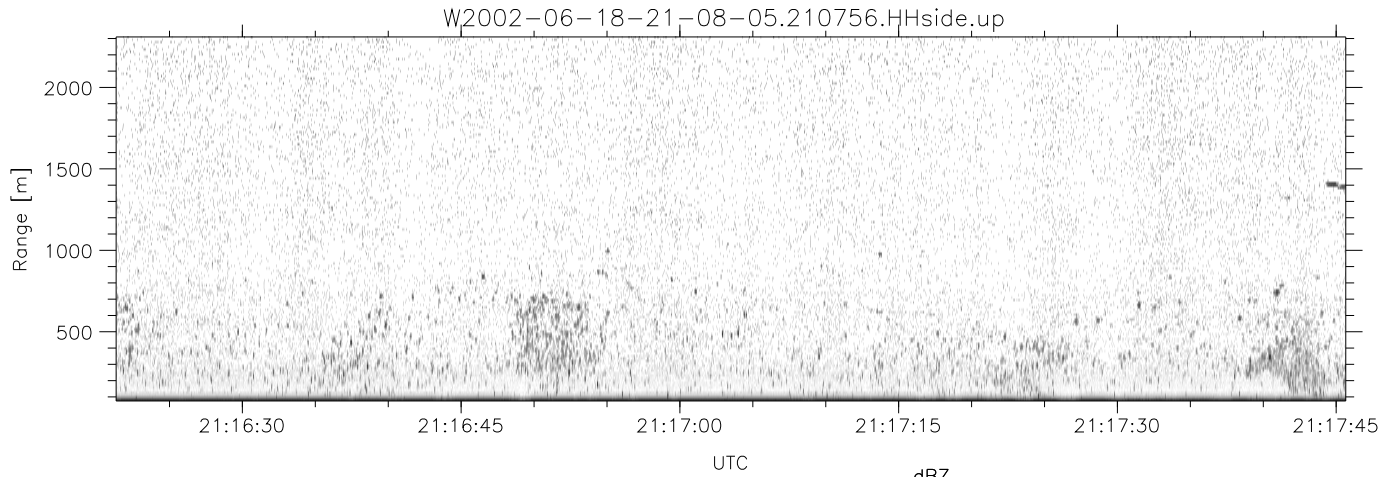
	Min	Max	Mean	Std	Varc%
hhN (dB)	-67.26	-65.17	-66.39	-78.87	5.6
vvN (dB)	-66.28	-64.12	-65.32	-77.72	5.8
hhL (dB)	-13.90	-2.12	-4.83	-9.73	32.4
vhL (dB)	-24.36	-6.41	-11.46	-15.04	43.8
ppN (m/s)	-15.80	15.80	0.34	8.95	
ppT (m/s)	-0.04	0.02	-0.00	0.01	
vh/hh (dB)	-NaN	-29.50	-35.47	-35.98	88.9
hnjmp (dB)	-1.04	1.29	0.13	-11.52	6.8
vnjmp (dB)	-1.08	1.52	0.15	-11.47	6.9



IHOP 2002 (dual-antenna config, modes 1,3,4,7) Data (cal: 49.0,50.0)

W2002-06-18-21-08-05 - SPPMAG  
 IRIG:1,UTC: 21:07:56.48 to 21:37:31.25, Dur: 1775s  
 TimeLngth: 1774.77s, TimeInt: 24ms (40.4pps)  
 TimeCor=-13.0s, DSPDif(mn,min,mx):24,20,420  
 PPS(min,max,std): 21,42,2.89  
 Prof: 175 to 71879, NumProf(t/r): 71704/30122  
 ProcTime/Recs: 21:07:56-21:20:21/0-30121  
 MxACQtime: 17ms; DRate: 96.7KB/s; Flags: 0, 0, 0  
 Pulse: 275ns, IFfilt: 5.0MHz; ppPol: HH  
 TxPol: H, PRF: 20 kHz  
 Range: Delay 75m, Spacing 15m, Gates 150  
 Ave. Pulses: 348, Rng/Prof Aspect@90m/s: 6.7

	Min	Max	Mean	Std	Varc%
hhN(dB)	-67.26	-65.17	-66.39	-78.87	5.6
vvN(dB)	-66.28	-64.12	-65.32	-77.72	5.8
hhL(dB)	-13.90	-2.12	-4.83	-9.73	32.4
vhL(dB)	-24.36	-6.41	-11.46	-15.04	43.8
ppN(m/s)	-15.80	15.80	0.34	8.95	
ppT(m/s)	-0.04	0.02	-0.00	0.01	
vh/hh(dB)	-NaN	-29.50	-35.47	-35.98	88.9
hnjmp(dB)	-1.04	1.29	0.13	-11.52	6.8
vnjmp(dB)	-1.08	1.52	0.15	-11.47	6.9



IHOP 2002 (dual-antenna config, modes 1,3,4,7) Data (cal: 49.0,50.0)

W2002-06-18-21-08-05 - SPPMAG  
 IRIG:1,UTC: 21:07:56.48 to 21:37:31.25, Dur: 1775s  
 TimeLngth: 1774.77s, TimeInt: 24ms (40.4pps)  
 TimeCor=-13.0s, DSPDif(mn,min,mx):24,20,420  
 PPS(min,max,std): 21,42,2.89  
 Prof: 175 to 71879, NumProf(t/r): 71704/30122  
 ProcTime/Recs: 21:07:56-21:20:21/0-30121  
 MxACQtime: 17ms; DRate: 96.7KB/s; Flags: 0, 0, 0  
 Pulse: 275ns, IFfilt: 5.0MHz; ppPol: HH  
 TxPol: H, PRF: 20 kHz  
 Range: Delay 75m, Spacing 15m, Gates 150  
 Ave. Pulses: 348, Rng/Prof Aspect@90m/s: 6.7

	Min	Max	Mean	Std	Varc%
hhN(dB)	-67.26	-65.17	-66.39	-78.87	5.6
vvN(dB)	-66.28	-64.12	-65.32	-77.72	5.8
hhL(dB)	-13.90	-2.12	-4.83	-9.73	32.4
vhL(dB)	-24.36	-6.41	-11.46	-15.04	43.8
ppN(m/s)	-15.80	15.80	0.34	8.95	
ppT(m/s)	-0.04	0.02	-0.00	0.01	
vh/hh(dB)	-NaN	-29.50	-35.47	-35.98	88.9
hnjmp(dB)	-1.04	1.29	0.13	-11.52	6.8
vnjmp(dB)	-1.08	1.52	0.15	-11.47	6.9