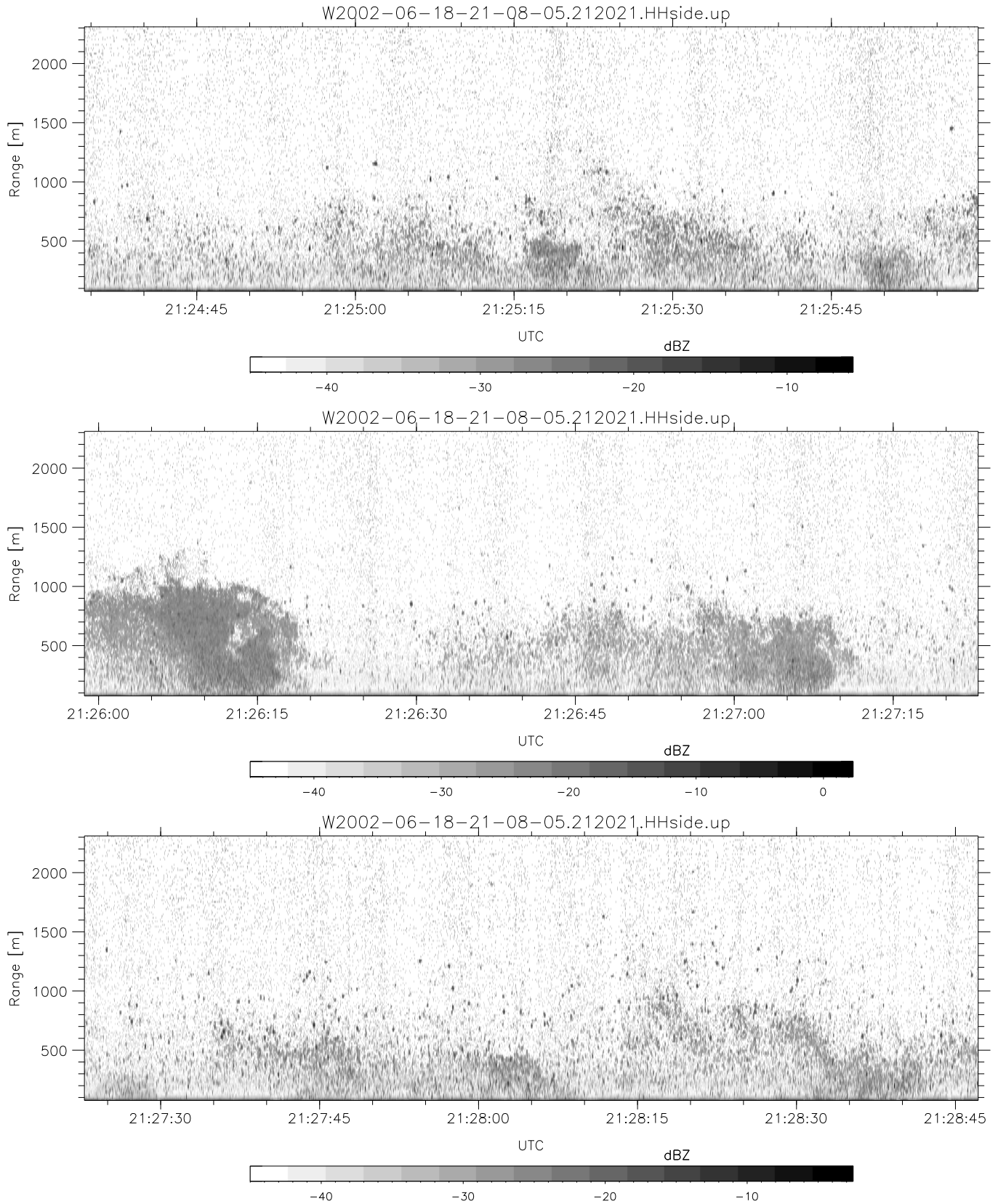


IHOP 2002 (dual-antenna config, modes 1,3,4,7) Data (cal: 49.0,50.0)

W2002-06-18-21-08-05 - SPPMAG
 IRIG:1,UTC: 21:07:56.48 to 21:37:31.25, Dur: 1775s
 TimeLngth: 1774.77s, TimeInt: 24ms (40.4pps)
 TimeCor=-13.0s, DSPDif(mn,min,mx):24,20,334
 PPS(min,max,std): 26,42,2.87
 Prof: 175 to 71879, NumProf(t/r): 71704/30122
 ProcTime/Recs: 21:20:21-21:32:47/30122-60243
 MxACQtime: 17ms; DRate: 96.7KB/s; Flags: 0, 0, 0
 Pulse: 275ns, IFfilt: 5.0MHz; ppPol: HH
 TxPol: H, PRF: 20 kHz
 Range: Delay 75m, Spacing 15m, Gates 150
 Ave. Pulses: 348, Rng/Prof Aspect@90m/s: 6.7

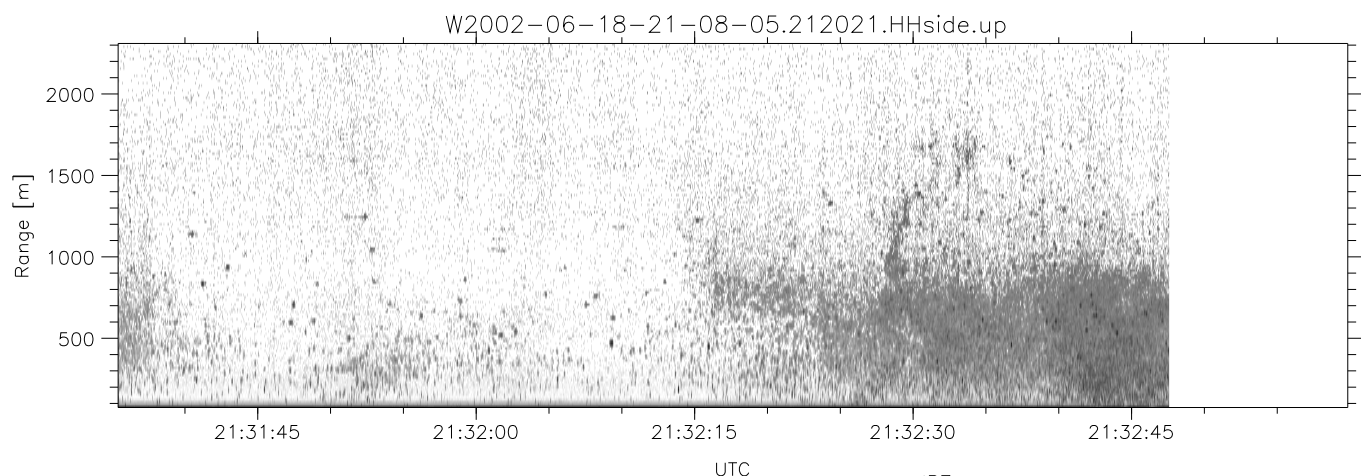
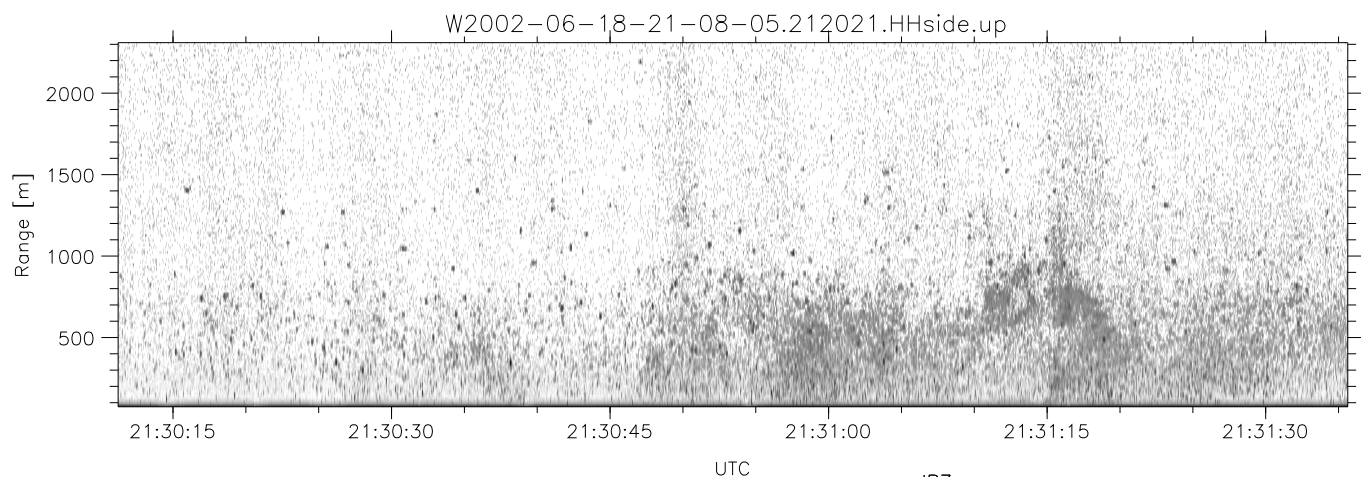
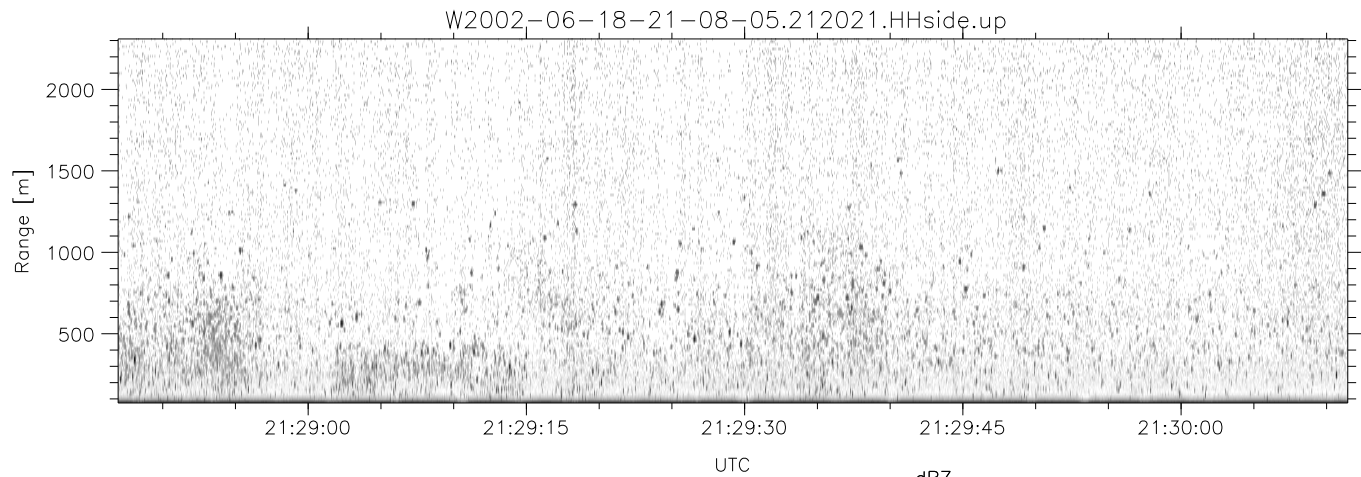
	Min	Max	Mean	Std	Varc%
hhN(dB)	-67.28	-65.09	-66.36	-78.46	6.2
vvN(dB)	-66.35	-63.99	-65.37	-77.93	5.5
hhL(dB)	-23.28	-4.48	-7.74	-12.01	37.4
vhL(dB)	-25.90	-7.88	-13.17	-16.48	46.6
ppN(m/s)	-15.80	15.80	0.05	8.90	
ppT(m/s)	-0.07	0.05	-0.00	0.01	
vh/hh(dB)	-NaN	2.98	-10.33	-5.67	292.
hnjmp(dB)	-1.03	1.29	0.14	-11.48	6.9
vnjmp(dB)	-0.94	1.41	0.15	-11.41	7.0



IHOP 2002 (dual-antenna config, modes 1,3,4,7) Data (cal: 49.0,50.0)

W2002-06-18-21-08-05 - SPPMAG
 IRIG:1,UTC: 21:07:56.48 to 21:37:31.25, Dur: 1775s
 TimeLngth: 1774.77s, TimeInt: 24ms (40.4pps)
 TimeCor=-13.0s, DSPDif(mn,min,mx):24,20,334
 PPS(min,max,std): 26,42,2.87
 Prof: 175 to 71879, NumProf(t/r): 71704/30122
 ProcTime/Recs: 21:20:21-21:32:47/30122-60243
 MxACQtime: 17ms; DRate: 96.7KB/s; Flags: 0, 0, 0
 Pulse: 275ns, IFfilt: 5.0MHz; ppPol: HH
 TxPol: H, PRF: 20 kHz
 Range: Delay 75m, Spacing 15m, Gates 150
 Ave. Pulses: 348, Rng/Prof Aspect@90m/s: 6.7

	Min	Max	Mean	Std	Varc%
hhN(dB)	-67.28	-65.09	-66.36	-78.46	6.2
vvN(dB)	-66.35	-63.99	-65.37	-77.93	5.5
hhL(dB)	-23.28	-4.48	-7.74	-12.01	37.4
vhL(dB)	-25.90	-7.88	-13.17	-16.48	46.6
ppN(m/s)	-15.80	15.80	0.05	8.90	
ppT(m/s)	-0.07	0.05	-0.00	0.01	
vh/hh(dB)	-NaN	2.98	-10.33	-5.67	292.
hn_jmp(dB)	-1.03	1.29	0.14	-11.48	6.9
vn_jmp(dB)	-0.94	1.41	0.15	-11.41	7.0



IHOP 2002 (dual-antenna config, modes 1,3,4,7) Data (cal: 49.0,50.0)

W2002-06-18-21-08-05 - SPPMAG
 IRIG:1,UTC: 21:07:56.48 to 21:37:31.25, Dur: 1775s
 TimeLngth: 1774.77s, TimeInt: 24ms (40.4pps)
 TimeCor=-13.0s, DSPDif(mn,min,mx):24,20,334
 PPS(min,max,std): 26,42,2.87
 Prof: 175 to 71879, NumProf(t/r): 71704/30122
 ProcTime/Recs: 21:20:21-21:32:47/30122-60243
 MxACQtime: 17ms; DRate: 96.7KB/s; Flags: 0, 0, 0
 Pulse: 275ns, IFfilt: 5.0MHz; ppPol: HH
 TxPol: H, PRF: 20 kHz
 Range: Delay 75m, Spacing 15m, Gates 150
 Ave. Pulses: 348, Rng/Prof Aspect@90m/s: 6.7

	Min	Max	Mean	Std	Varc%
hhN (dB)	-67.28	-65.09	-66.36	-78.46	6.2
vvN (dB)	-66.35	-63.99	-65.37	-77.93	5.5
hhL (dB)	-23.28	-4.48	-7.74	-12.01	37.4
vhL (dB)	-25.90	-7.88	-13.17	-16.48	46.6
ppN (m/s)	-15.80	15.80	0.05	8.90	
ppT (m/s)	-0.07	0.05	-0.00	0.01	
vh/hh (dB)	-NaN	2.98	-10.33	-5.67	292.
hnjmp (dB)	-1.03	1.29	0.14	-11.48	6.9
vnjmp (dB)	-0.94	1.41	0.15	-11.41	7.0