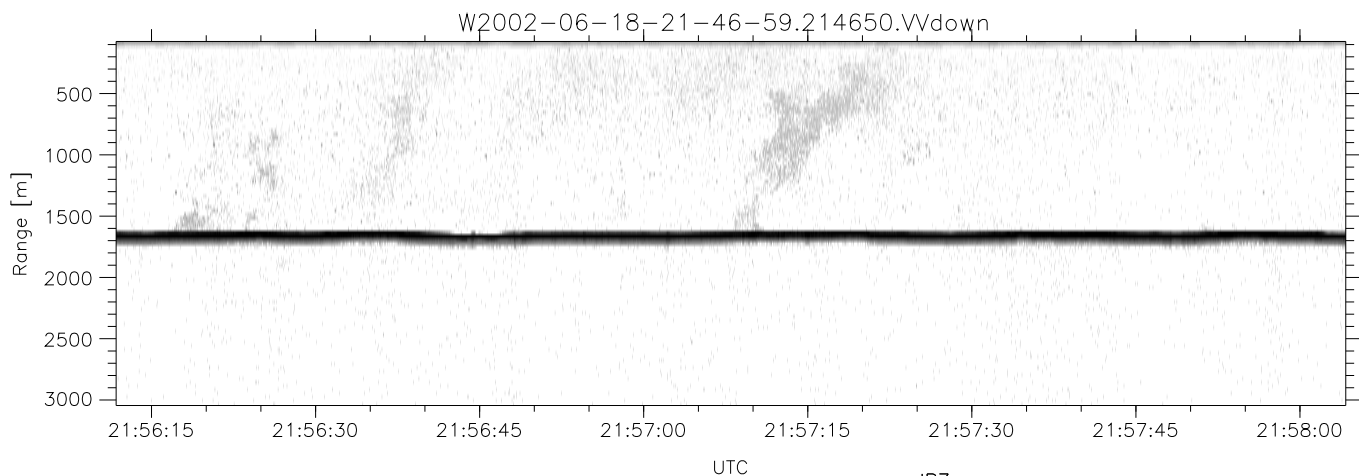
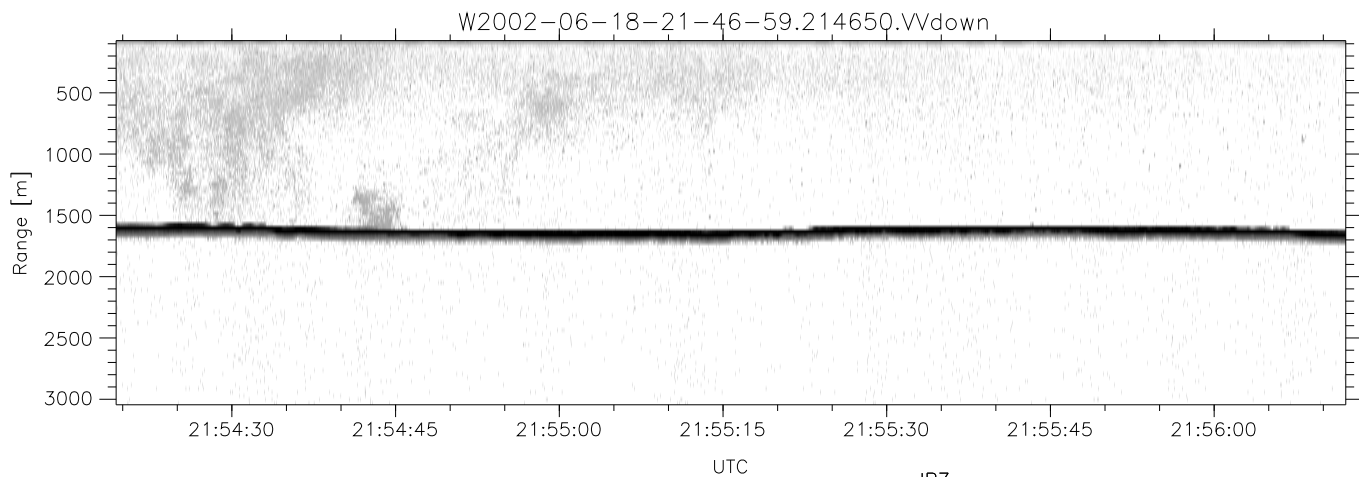
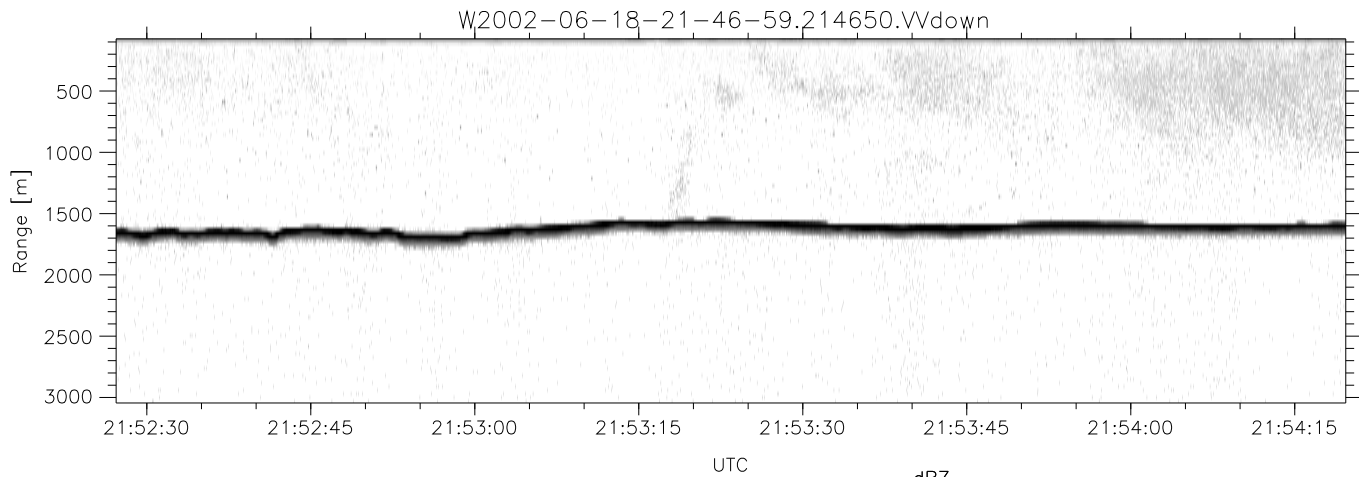


IHOP 2002 (dual-antenna config, modes 1,3,4,7) Data (cal: 55.0,50.0)

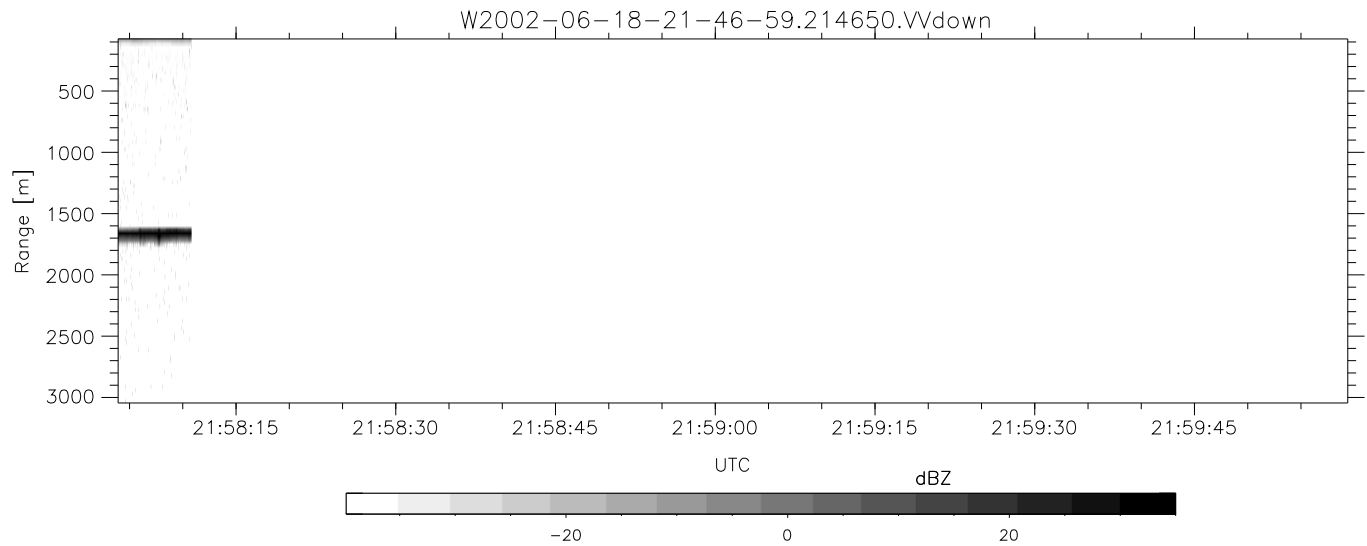
W2002-06-18-21-46-59 - PPMAG4	Min	Max	Mean	Std	Varc%	
IRIG:1,UTC: 21:46:50.46 to 21:58:10.81, Dur: 680s	hhN(dB)	-68.20	-61.04	-66.18	-72.91	21.2
TimeLngth: 680.35s, TimeInt: 29ms (34.3pps)	vvN(dB)	-67.30	-60.09	-65.32	-71.79	22.6
TimeCor=-13.0s, DSPDif(mn,min,mx):29,28,380	hhL(dB)	-13.12	-2.97	-5.64	-10.73	31.0
PPS(min,max,std): 23,36,2.18	vvL(dB)	-10.74	-0.49	-3.03	-7.99	31.9
Prof: 44 to 23368, NumProf(t/r): 23324/23324	ppN(m/s)	-12.58	12.48	0.14	4.12	
MxACQtime: 33ms; DRate: 191.9KB/s; Flags: 0, 0, 0	ppT(m/s)	-99.39	98.57	1.10	32.55	
Pulse: 275ns, IFfilt: 5.0MHz; ppPol: HH HV VV	hh/vv(dB)	-NaN	94.83	53.09	73.83	1185
TxPol: HHVV, PRF: 20 10 20 10 kHz	vh/hh(dB)	-NaN	-20.18	-51.67	-35.72	3938
Range: Delay 75m, Spacing 30m, Gates 100	hv/vv(dB)	-NaN	-26.90	-54.52	-43.37	1304
Ave. Pulses: 84, Rng/Prof Aspect@90m/s: 11.4	hn/jmp(dB)	-2.36	2.22	-0.09	-8.63	14.0
	vn/jmp(dB)	-2.55	2.16	-0.10	-8.60	14.1



IHOP 2002 (dual-antenna config, modes 1,3,4,7) Data (cal: 55.0,50.0)

W2002-06-18-21-46-59 - PPMAG4  
 IRIG:1,UTC: 21:46:50.46 to 21:58:10.81, Dur: 680s  
 TimeLngth: 680.35s, TimeInt: 29ms (34.3pps)  
 TimeCor=-13.0s, DSPDif(mn,min,mx):29,28,380  
 PPS(min,max,std): 23,36,2.18  
 Prof: 44 to 23368, NumProf(t/r): 23324/23324  
 MxACQtime: 33ms; DRate: 191.9KB/s; Flags: 0, 0, 0  
 Pulse: 275ns, IFfilt: 5.0MHz; ppPol: HH HV VV  
 TxPol: HHVV, PRF: 20 10 20 10 kHz  
 Range: Delay 75m, Spacing 30m, Gates 100  
 Ave. Pulses: 84, Rng/Prof Aspect@90m/s: 11.4

	Min	Max	Mean	Std	Varc%
hhN(dB)	-68.20	-61.04	-66.18	-72.91	21.2
vvN(dB)	-67.30	-60.09	-65.32	-71.79	22.6
hhL(dB)	-13.12	-2.97	-5.64	-10.73	31.0
vvL(dB)	-10.74	-0.49	-3.03	-7.99	31.9
ppN(m/s)	-12.58	12.48	0.14	4.12	
ppT(m/s)	-99.39	98.57	1.10	32.55	
hh/vv(dB)	-NaN	94.83	53.09	73.83	1185
vh/hh(dB)	-NaN	-20.18	-51.67	-35.72	3938
hv/vv(dB)	-NaN	-26.90	-54.52	-43.37	1304
hh_jmp(dB)	-2.36	2.22	-0.09	-8.63	14.0
vv_jmp(dB)	-2.55	2.16	-0.10	-8.60	14.1



IHOP 2002 (dual-antenna config, modes 1,3,4,7) Data (cal: 55.0,50.0)

W2002-06-18-21-46-59 - PPMAG4						
IRIG:1,UTC: 21:46:50.46 to 21:58:10.81, Dur: 680s	hhN(dB)	Min	Max	Mean	Std	Varc%
TimeLngth: 680.35s, TimeInt: 29ms (34.3pps)	vvN(dB)	-68.20	-61.04	-66.18	-72.91	21.2
TimeCor=-13.0s, DSPDif(mn,min,mx):29,28,380	hhL(dB)	-67.30	-60.09	-65.32	-71.79	22.6
PPS(min,max,std): 23,36,2.18	vvL(dB)	-13.12	-2.97	-5.64	-10.73	31.0
Prof: 44 to 23368, NumProf(t/r): 23324/23324	ppN(m/s)	-10.74	-0.49	-3.03	-7.99	31.9
MxACQtime: 33ms; DRate: 191.9KB/s; Flags: 0, 0, 0	ppT(m/s)	-12.58	12.48	0.14	4.12	
Pulse: 275ns, IFfilt: 5.0MHz; ppPol: HH HV VV	hh/vv(dB)	-99.39	98.57	1.10	32.55	
TxPol: HHVV, PRF: 20 10 20 10 kHz	vh/vv(dB)	-NaN	94.83	53.09	73.83	1185
Range: Delay 75m, Spacing 30m, Gates 100	hh/hh(dB)	-NaN	-20.18	-51.67	-35.72	3938
Ave. Pulses: 84, Rng/Prof Aspect@90m/s: 11.4	hv/vv(dB)	-NaN	-26.90	-54.52	-43.37	1304
	hn/jmp(dB)	-2.36	2.22	-0.09	-8.63	14.0
	vn/jmp(dB)	-2.55	2.16	-0.10	-8.60	14.1