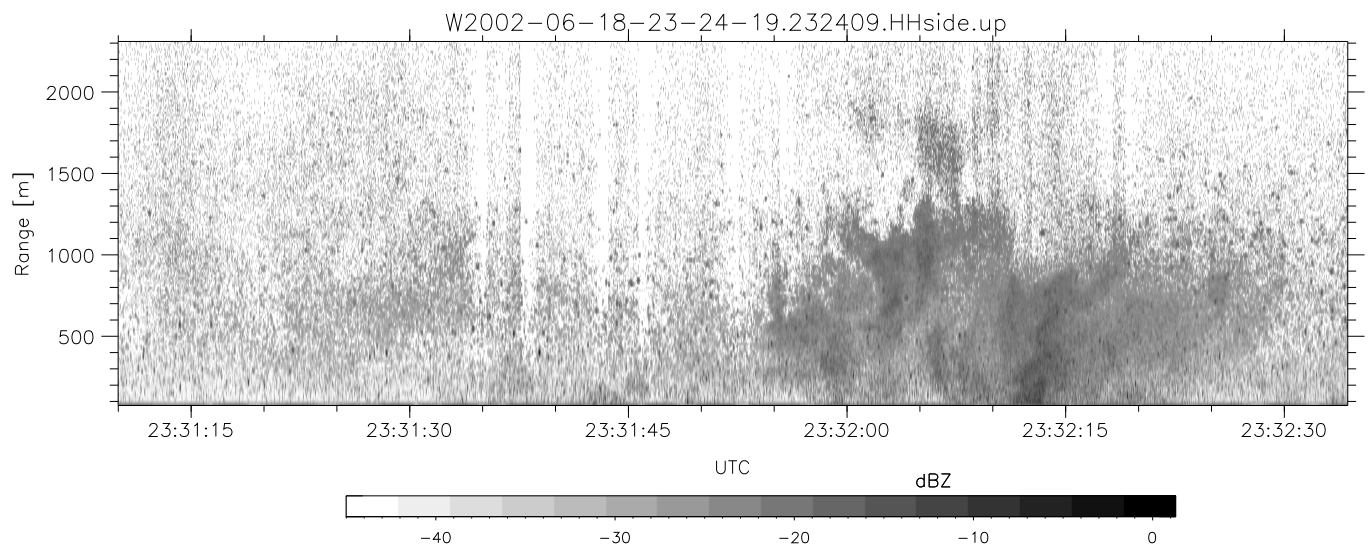
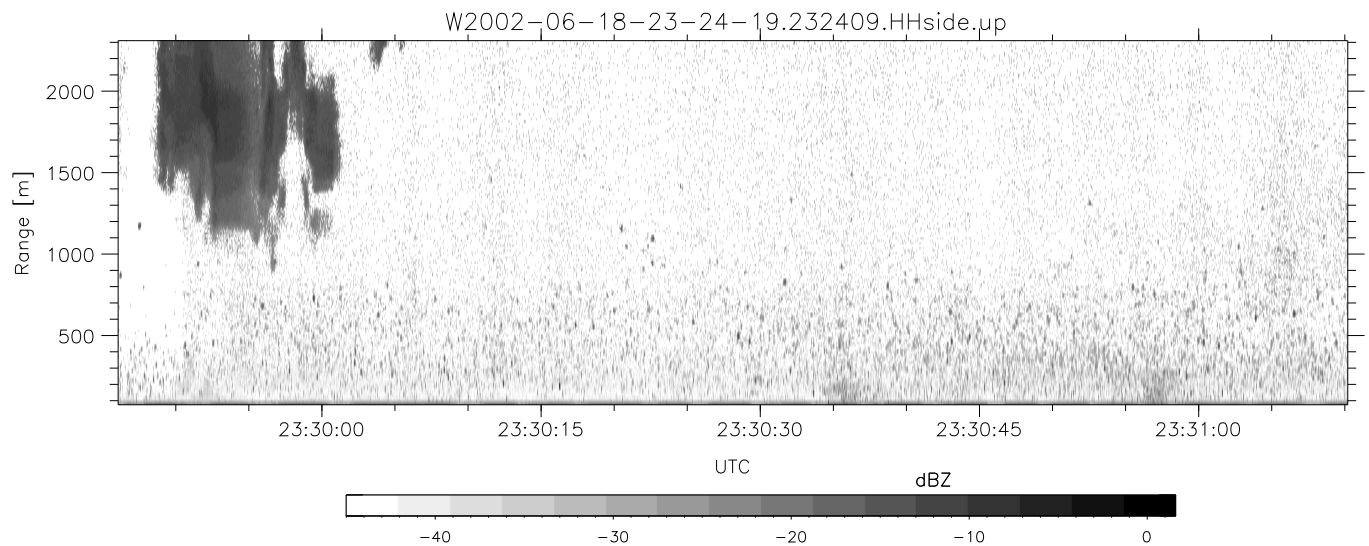
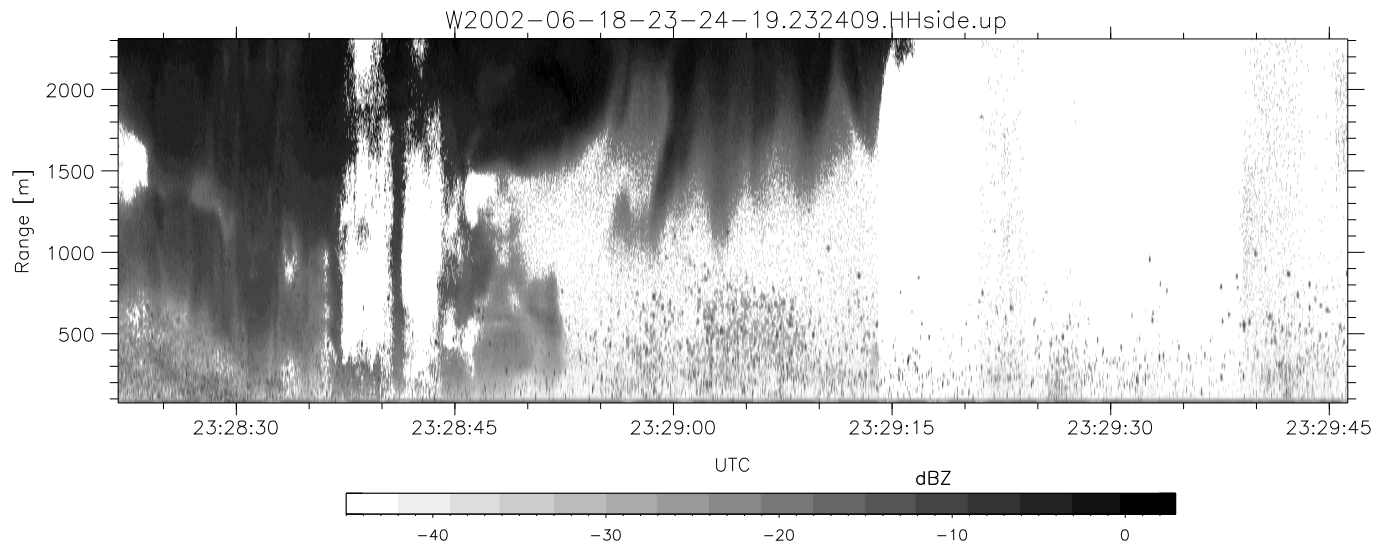


IHOP 2002 (dual-antenna config, modes 1,3,4,7) Data (cal: 49.0,50.0)

W2002-06-18-23-24-19 - SPPMAG  
 IRIG:1,UTC: 23:24:09.70 to 23:41:37.08, Dur: 1048s  
 TimeLngth: 1047.38s, TimeInt: 24ms (40.9pps)  
 TimeCor=-13.0s, DSPDif(mn,min,mx):28,20,374  
 PPS(min,max,std): 20,42,2.68  
 Prof: 133 to 42983, NumProf(t/r): 42850/30122  
 ProcTime/Recs: 23:24:09-23:36:25/0-30121  
 MxACQtime: 17ms; DRate: 98.0KB/s; Flags: 0, 0, 0  
 Pulse: 275ns, IFfilt: 5.0MHz; ppPol: HH  
 TxPol: H, PRF: 20 kHz  
 Range: Delay 75m, Spacing 15m, Gates 150  
 Ave. Pulses: 348, Rng/Prof Aspect@90m/s: 6.8

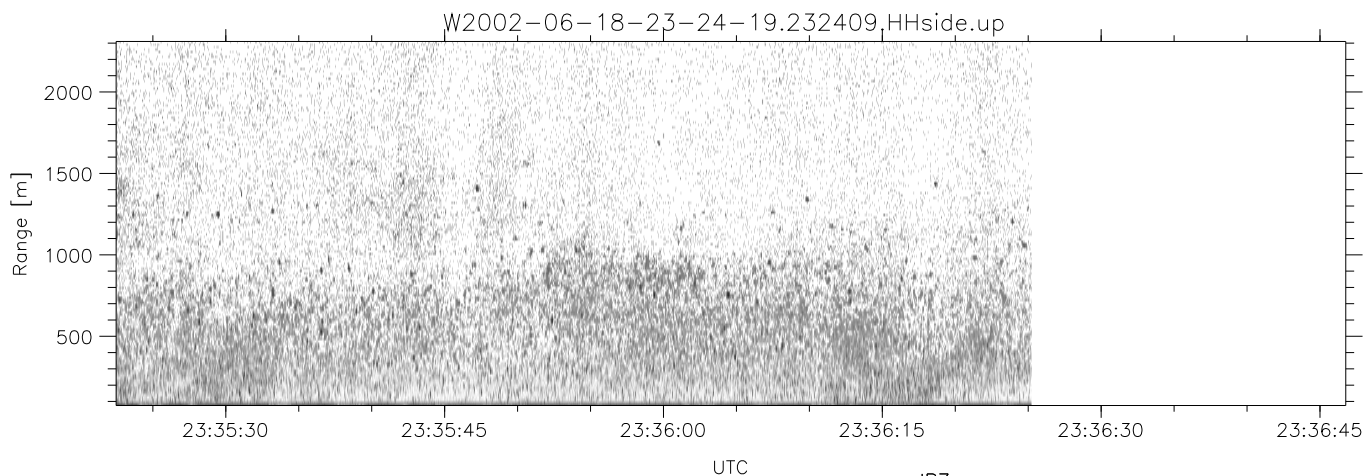
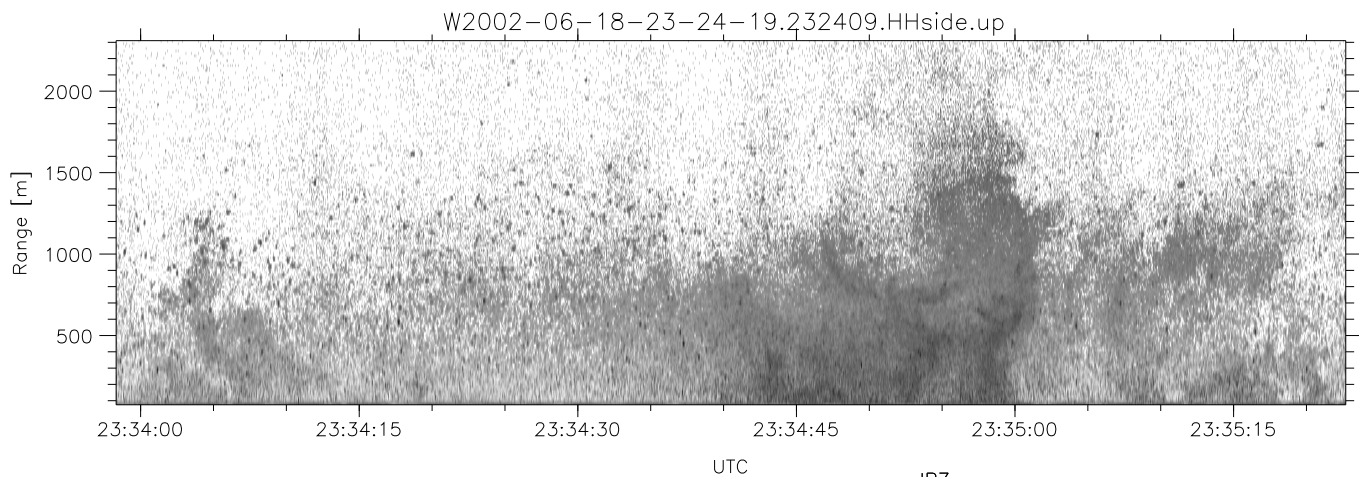
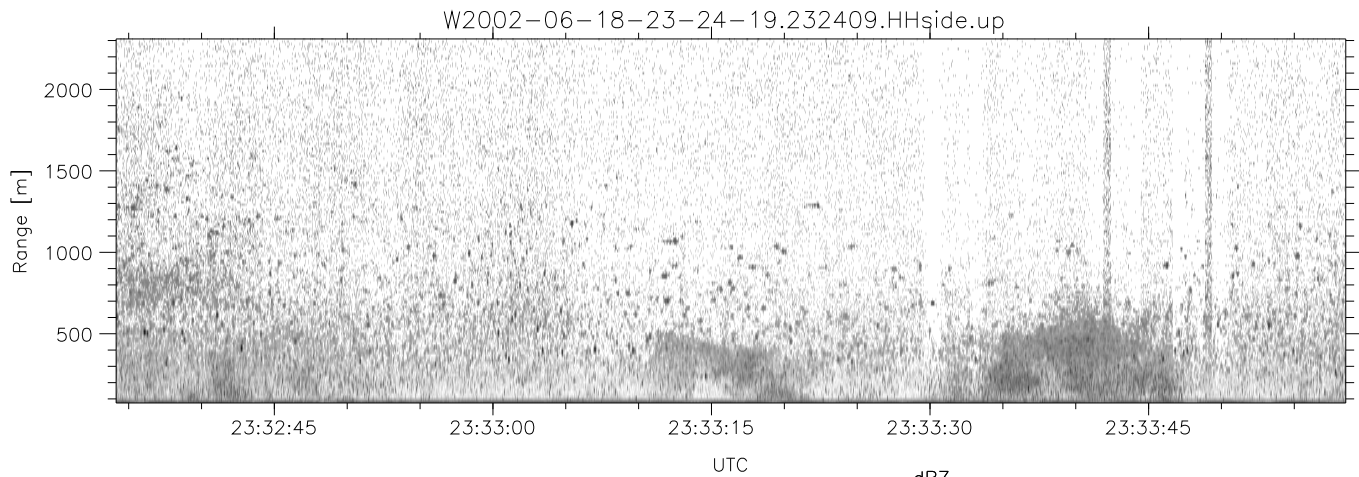
	Min	Max	Mean	Std	Varc%
hhN(dB)	-75.52	-34.21	-66.16	-56.04	1029
vvN(dB)	-72.28	-32.54	-65.43	-54.86	1142
hhL(dB)	-74.29	-4.94	-8.87	-13.01	38.6
vhL(dB)	-72.07	-7.56	-14.30	-16.49	60.4
ppN(m/s)	-15.79	15.80	0.30	8.58	
ppT(m/s)	-2.67	2.48	-0.00	0.11	
vh/hh(dB)	-NaN	1.61	-22.50	-11.77	1181
hn_jmp(dB)	-7.04	40.54	2.71	19.68	4969
vn_jmp(dB)	-1.63	39.02	2.03	18.14	4081



IHOP 2002 (dual-antenna config, modes 1,3,4,7) Data (cal: 49.0,50.0)

W2002-06-18-23-24-19 - SPPMAG  
 IRIG:1,UTC: 23:24:09.70 to 23:41:37.08, Dur: 1048s  
 TimeLngth: 1047.38s, TimeInt: 24ms (40.9pps)  
 TimeCor=-13.0s, DSPDif(mn,min,mx):28,20,374  
 PPS(min,max,std): 20,42,2.68  
 Prof: 133 to 42983, NumProf(t/r): 42850/30122  
 ProcTime/Recs: 23:24:09-23:36:25/0-30121  
 MxACQtime: 17ms; DRate: 98.0KB/s; Flags: 0, 0, 0  
 Pulse: 275ns, IFfilt: 5.0MHz; ppPol: HH  
 TxPol: H, PRF: 20 kHz  
 Range: Delay 75m, Spacing 15m, Gates 150  
 Ave. Pulses: 348, Rng/Prof Aspect@90m/s: 6.8

	Min	Max	Mean	Std	Varc%
hhN(dB)	-75.52	-34.21	-66.16	-56.04	1029
vvN(dB)	-72.28	-32.54	-65.43	-54.86	1142
hhL(dB)	-74.29	-4.94	-8.87	-13.01	38.6
vhL(dB)	-72.07	-7.56	-14.30	-16.49	60.4
ppN(m/s)	-15.79	15.80	0.30	8.58	
ppT(m/s)	-2.67	2.48	-0.00	0.11	
vh/hh(dB)	-NaN	1.61	-22.50	-11.77	1181
hn_jmp(dB)	-7.04	40.54	2.71	19.68	4969
vn_jmp(dB)	-1.63	39.02	2.03	18.14	4081



IHOP 2002 (dual-antenna config, modes 1,3,4,7) Data (cal: 49.0,50.0)

W2002-06-18-23-24-19 - SPPMAG  
 IRIG:1,UTC: 23:24:09.70 to 23:41:37.08, Dur: 1048s  
 TimeLngth: 1047.38s, TimeInt: 24ms (40.9pps)  
 TimeCor=-13.0s, DSPDif(mn,min,mx):28,20,374  
 PPS(min,max,std): 20,42,2.68  
 Prof: 133 to 42983, NumProf(t/r): 42850/30122  
 ProcTime/Recs: 23:24:09-23:36:25/0-30121  
 MxACQtime: 17ms; DRate: 98.0KB/s; Flags: 0, 0, 0  
 Pulse: 275ns, IFfilt: 5.0MHz; ppPol: HH  
 TxPol: H, PRF: 20 kHz  
 Range: Delay 75m, Spacing 15m, Gates 150  
 Ave. Pulses: 348, Rng/Prof Aspect@90m/s: 6.8

	Min	Max	Mean	Std	Varc%
hhN (dB)	-75.52	-34.21	-66.16	-56.04	1029
vvN (dB)	-72.28	-32.54	-65.43	-54.86	1142
hhL (dB)	-74.29	-4.94	-8.87	-13.01	38.6
vhL (dB)	-72.07	-7.56	-14.30	-16.49	60.4
ppN (m/s)	-15.79	15.80	0.30	8.58	
ppT (m/s)	-2.67	2.48	-0.00	0.11	
vh/hh (dB)	-NaN	1.61	-22.50	-11.77	1181
hn_jmp (dB)	-7.04	40.54	2.71	19.68	4969
vn_jmp (dB)	-1.63	39.02	2.03	18.14	4081